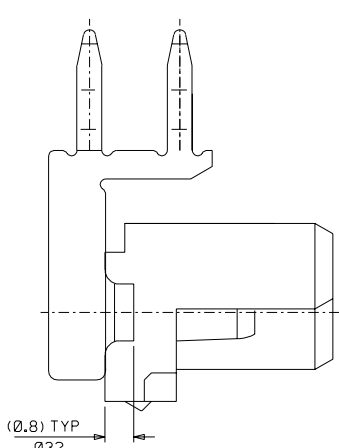
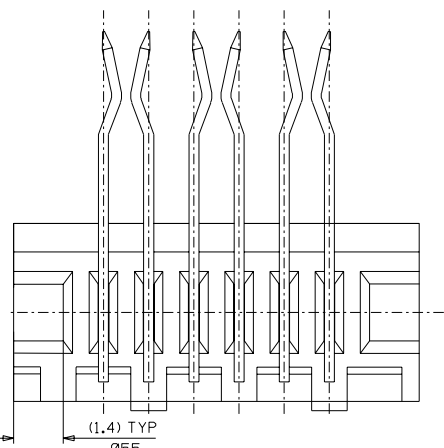
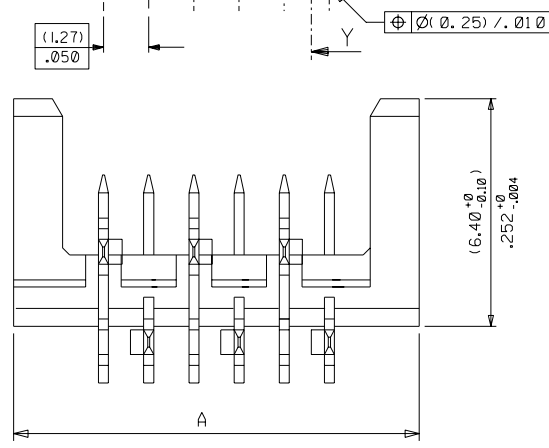


RECOMMENDED P.C.B. LAYOUT FROM COMPONENT SIDE
 (PCB THICKNESS (1.60 ±0.20) / .063 ±.008)



4.10

90800 - 0 - **
 - - - - -CIRCUIT SIZE
 0= (3-5UM) / 120-200UM TIN VERSION
 3= (0.76UM) / 30UM GOLD VERSION

PART NO.	NO. OF CKTS	DIMN. A	DIMN. B	QTY PER TUBE	TOOLED
90800-026	26	(36.80)/1.449	(31.75)/1.250	14	YES
90800-024	24	(34.26)/1.349	(29.21)/1.150	15	YES
90800-022	22	(31.72)/1.249	(26.67)/1.050	16	YES
90800-020	20	(29.18)/1.149	(24.13)/.950	18	YES
90800-018	18	(26.64)/1.049	(21.59)/.850	20	YES
90800-016	16	(24.10)/.949	(19.05)/.750	22	YES
90800-014	14	(21.56)/.849	(16.51)/.650	24	YES
90800-012	12	(19.02)/.749	(13.97)/.550	28	YES
90800-010	10	(16.48)/.649	(11.43)/.450	32	YES
90800-008	8	(13.94)/.549	(8.89)/.350	38	YES
90800-006	6	(11.40)/.449	(6.35)/.250	46	YES
90800-004	4	(8.86)/.349	(3.81)/.150	59	YES

NOTES:
 1) MATERIAL: HOUSING+POLYESTER PBT 15% G.F., UL 94 V-0, BLACK.
 TERMINAL- CARTRIDGE BRASS (0.28)/.011 REF THICK
 2) SEE PRODUCT SPECIFICATION PS-99020-0011.

FOR PREVIOUS DRAWING ISSUES SEE MRI.

EC NO. E2003-1253 DRWN: D.CARTON 03/05/27 CHK: / / / APPR: / / / REV	DESCRIPTION MAJOR CRITICAL C =	QUALITY SYMBOLS		GENERAL TOLERANCES: (UNLESS SPECIFIED) mm INCH		SCALE 10:1	DESIGN UNITS <input checked="" type="checkbox"/> mm <input type="checkbox"/> INCH	THIRD ANGLE PROJECTION <input checked="" type="checkbox"/> mm <input type="checkbox"/> INCH ONLY	DIMENSIONS: mm INCH <input checked="" type="checkbox"/> mm <input type="checkbox"/> INCH ONLY	SHT REV REVISE ON CAD ONLY
		DRAWN BY & DATE PW 94/01/28		CHECKED BY & DATE		APPROVED BY & DATE		TITLE: RIGHT ANGLE STAGGERED PICOFLEX HEADER ASSEMBLY (1.27)/.050 CENTRES		SHEET NO. 10F1 SIZE C
CAD FILENAME S90800X1DGN		MATERIAL NO. SEE CHART		DRAWING NO. SDA-90800E		THIS DRAWING CONTAINS INFORMATION THAT IS PROPRIETARY TO MOLEX INCORPORATED AND SHOULD NOT BE USED WITHOUT WRITTEN PERMISSION.				