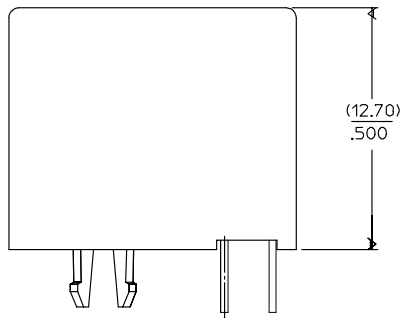
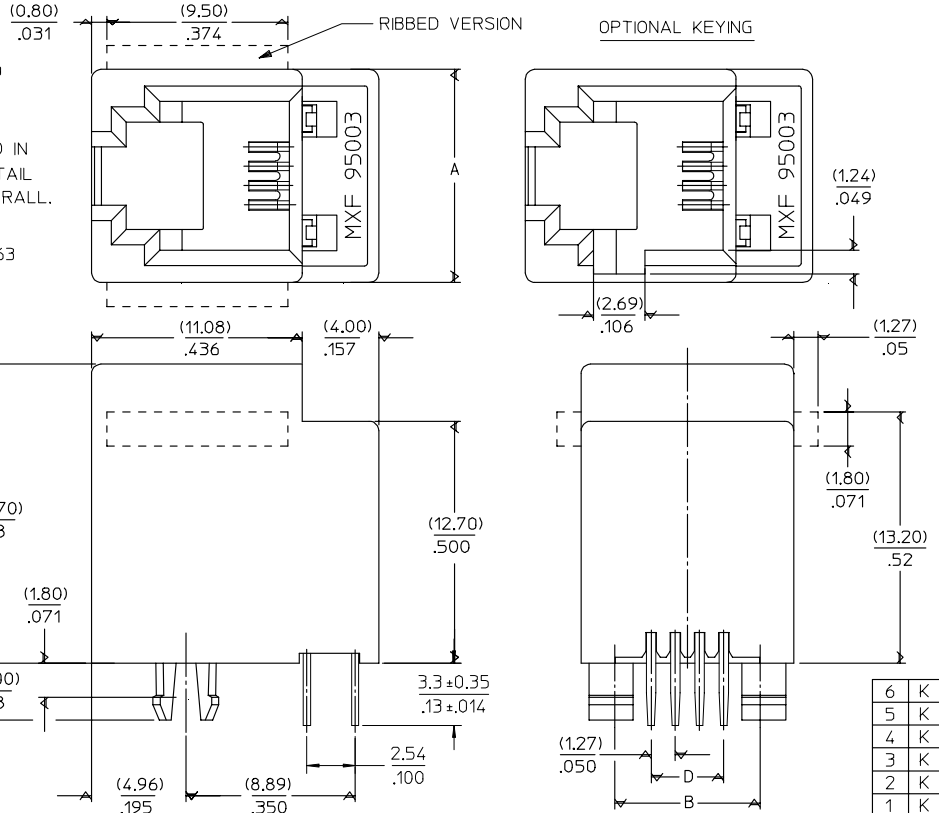


NOTES :

- 1- MATERIAL:
 -HOUSING: POLYESTER FIBER GLASS FILLED UL 94-V0
 COLOR BLACK.
 -TERMINAL: PHOSPHOR BRONZE.
- PLATING 2:
 POST PLATE (0.00127-0.00152)/.000050-.000060 GOLD IN
 CONTACT AREA. (0.00190)/.000075 MIN. PURE TIN IN TAIL
 AREA BOTH OVER (0.00127)/.000050 MIN. NICKEL OVERALL.
- PLATING 7: ONLY ON REQUEST
 POST PLATE 0.00005/.000002 MIN GOLD OVER 0.000763
 .000030 MIN PALLADIUM NICKEL IN CONTACT AREA.
 0.00190/.000075 MIN PURE TIN IN TAIL AREA. BOTH
 OVER 0.00127/.000050 MIN NICKEL OVERALL:
- 2- JACK FOR MATING WITH F.C.C. 68 PLUGS
 90075 MOLEX SERIES.
 3- PRODUCT SPECIFICATION PS-95003.
 4- APPLICATION SPECIFICATION AS-95001.
 5- PACKAGING SPECIFICATION PK-95003:
 - STANDARD PACKAGING SHEET 1.
 - TUBE PACKAGING FOR SMT VERSION SHEET 2.
 - TUBE PACKAGING FOR THROUGH HOLE VERSION
 SHEET 3.



SHORT VERSION



ENTER DESCRIPTION EC NO. M22005-0119 DRAWN BY: DRW:KINOLLER 2004/10/06 CHKD:FCARBET 2004/10/06 APPR:KINOLLER 2004/10/11	QUALITY SYMBOLS ▽=0 ▽=0	GENERAL TOLERANCES (UNLESS SPECIFIED)		DIMENSION STYLE MM/IN		SCALE 5:1	DESIGN UNITS METRIC	THIRD ANGLE PROJECTION	
		4 PLACES ± --- ± ---	3 PLACES ± --- ± .006	2 PLACES ± 0.15 ± .010	1 PLACE ± 0.25 ± ---	ANGULAR ± .5 °	DRAWN BY GP	DATE 95/05/15	TITLE LOW PROFILE TOP ENTRY JACK (THROUGH HOLE VERSION)
DRAFT WHERE APPLICABLE MUST REMAIN WITHIN DIMENSIONS		MATERIAL NO.		DOCUMENT NO.		SHEET NO.		THIS DRAWING CONTAINS INFORMATION THAT IS PROPRIETARY TO MOLEX INCORPORATED AND SHOULD NOT BE USED WITHOUT WRITTEN PERMISSION	
		SEE SHT 4,5,6		SDA-95003-F		1 OF 6		MOLEX INCORPORATED	

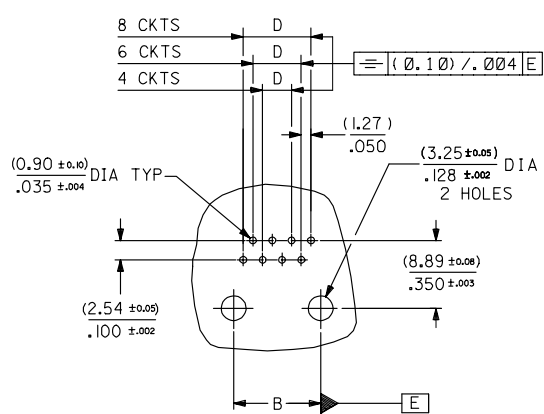
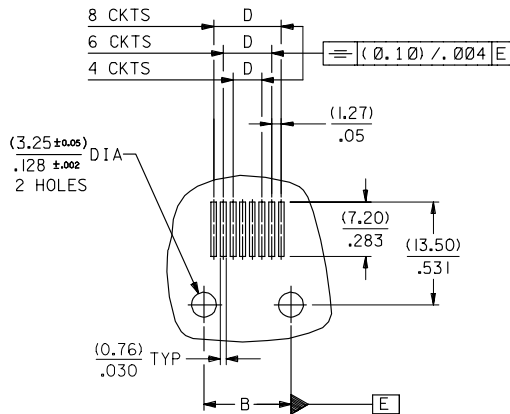
10 9 8 7 6 5 4 3 2 1

DIM. \ TYPE	POS. 4		POS. 6		POS. 8		
	4 CKTS.	4 CKTS.	6 CKTS.	6 CKTS.	4 CKTS.	6 CKTS.	8 CKTS.
A	(11.18) / .440	(13.21) / .520	(13.21) / .520	(15.24) / .600	(15.24) / .600	(15.24) / .600	(15.24) / .600
B (± 0.05) / $\pm .002$	(7.62) / .300	(10.16) / .400	(10.16) / .400	(11.43) / .450	(11.43) / .450	(11.43) / .450	(11.43) / .450
D (± 0.05) / $\pm .002$	(3.81) / .150	(3.81) / .150	(6.35) / .250	(3.81) / .150	(6.35) / .250	(6.35) / .250	(8.89) / .350

P.C.B. MOUNTING PATTERNS - SEE FROM COMPONENT SIDE

FOR SMT JACK (SURFACE MOUNT)

FOR STANDARD JACK (THROUGH HOLE)



ENTER DESCRIPTION IEC NO. MG2005-0119 DRAWN BY DR. W. HOLLER CHECKED BY CH. K. CARBET APPROVED BY APPR. KNOLLER DATE 2004/10/06 DATE 2004/10/06 DATE 2004/10/11	QUALITY SYMBOLS	GENERAL TOLERANCES (UNLESS SPECIFIED)	DIMENSION STYLE	SCALE	DESIGN UNITS	THIRD ANGLE PROJECTION	
	$\nabla=0$ $\nabla=0$	mm INCH 4 PLACES ± --- ± --- 3 PLACES ± --- ± .006 2 PLACES ± 0.15 ± .010 1 PLACE ± 0.25 ± --- ANGULAR ± .5 °	MM/IN	2:1	METRIC		
		DRAFT WHERE APPLICABLE MUST REMAIN WITHIN DIMENSIONS	DRAWN BY GP	DATE 95/05/15	TITLE	LOW PROFILE T/E JACK	
			CHECKED BY	DATE			
			APPROVED BY	DATE			
			MATERIAL NO.	DOCUMENT NO.			
			SEE SHT. 4, 5	SDA-95003-F			
			THIS DRAWING CONTAINS INFORMATION THAT IS PROPRIETARY TO MOLEX INCORPORATED AND SHOULD NOT BE USED WITHOUT WRITTEN PERMISSION				
						SHEET NO. 3 OF 6	

9 8 7 6 5 4 3 2 1

10 9 8 7 6 5 4 3 2 1

TRAY PACKAGING, SEE PACKAGING SPEC PK95003 SHEET 1

HOUSING SIZE	LOADED CONTACTS	PLATING	PART NO FOR JACK ASSEMBLY THROUGH HOLE STANDARD VERSION						PART NO FOR JACK ASSEMBLY THROUGH HOLE SHORT VERSION						PART NO FOR JACK ASSEMBLY S.M.T. SHORT VERSION											
			POLYESTER FIBER GLASS FILED 94VO COLOR BLACK			POLYESTER FIBER GLASS FILED 94VO COLOR BLACK			POLYAMIDE 4/6 FIBER GLASS FILED 94VO COLOR GREY			POLYAMIDE 4/6 FIBER GLASS FILED 94VO COLOR BLACK														
			NO KEY	KEY	TOOLED	NO KEY	KEY	TOOLED	NO KEY	KEY	TOOLED	NO KEY	KEY	TOOLED												
NO RIB	NO RIB	NO RIB	NO RIB	NO RIB	NO RIB	NO RIB	NO RIB	NO RIB	NO RIB	NO RIB	NO RIB															
4	4	2	95003-2441	X	95003-2442				95003-2444		95003-2445				95003-6444		95003-6445				95003-6454		95003-6455			
6	4	2	95003-2641	X	95003-2642				95003-2644		95003-2645				95003-6644		95003-6645				95003-6654		95003-6655			
6	6	2	95003-2661	X	95003-2662				95003-2664	X	95003-2665				95003-6664	X	95003-6665				95003-6674	X	95003-6675			
8	4	2	95003-2841		95003-2842				95003-2844		95003-2845				95003-6844		95003-6845				95003-6854		95003-6855			
8	6	2	95003-2861		95003-2862				95003-2864		95003-2865				95003-6864		95003-6865				95003-6874		95003-6875			
8	8	2	95003-2881	X	95003-2882	X			95003-2884		95003-2885				95003-6884		95003-6885				95003-6894		95003-6895			

TOOLED	<input checked="" type="checkbox"/>
NOT TOOLED	<input type="checkbox"/>

ENTER DESCRIPTION EC NO: M22005-0719 DRAWN BY: DRW:MANOLLER 2004/10/06 CHECKED BY: CHK:FCARBET 2004/10/06 APPR: KINOLLER 2004/10/11 REV:	QUALITY SYMBOLS ▼=0 ▽=0	GENERAL TOLERANCES (UNLESS SPECIFIED) <table border="1" style="font-size: small;"> <tr> <th></th> <th>mm</th> <th>INCH</th> </tr> <tr> <td>4 PLACES</td> <td>± .---</td> <td>± .---</td> </tr> <tr> <td>3 PLACES</td> <td>± .---</td> <td>± .---</td> </tr> <tr> <td>2 PLACES</td> <td>± .---</td> <td>± .---</td> </tr> <tr> <td>1 PLACE</td> <td>± .---</td> <td>± .---</td> </tr> <tr> <td colspan="3" style="text-align: center;">ANGULAR ± .---°</td> </tr> </table>		mm	INCH	4 PLACES	± .---	± .---	3 PLACES	± .---	± .---	2 PLACES	± .---	± .---	1 PLACE	± .---	± .---	ANGULAR ± .---°			DIMENSION STYLE MM/IN DRAWN BY: GP DATE: 95/05/15 CHECKED BY: DATE: APPROVED BY: DATE:	SCALE --- DESIGN UNITS METRIC <input type="checkbox"/> THIRD ANGLE PROJECTION	LOW PROFILE T/E JACK THROUGH HOLE STD. VERS. THROUGH H. SMT SHORT V. MOLEX INCORPORATED
		mm	INCH																				
	4 PLACES	± .---	± .---																				
	3 PLACES	± .---	± .---																				
2 PLACES	± .---	± .---																					
1 PLACE	± .---	± .---																					
ANGULAR ± .---°																							
DRAFT WHERE APPLICABLE MUST REMAIN WITHIN DIMENSIONS		SEE CHART SIZE: A3	MATERIAL NO. SDA-95003-F DOCUMENT NO. SDA-95003-F		SHEET NO. 4 OF 6																		
THIS DRAWING CONTAINS INFORMATION THAT IS PROPRIETARY TO MOLEX INCORPORATED AND SHOULD NOT BE USED WITHOUT WRITTEN PERMISSION																							

9 8 7 6 5 4 3 2 1