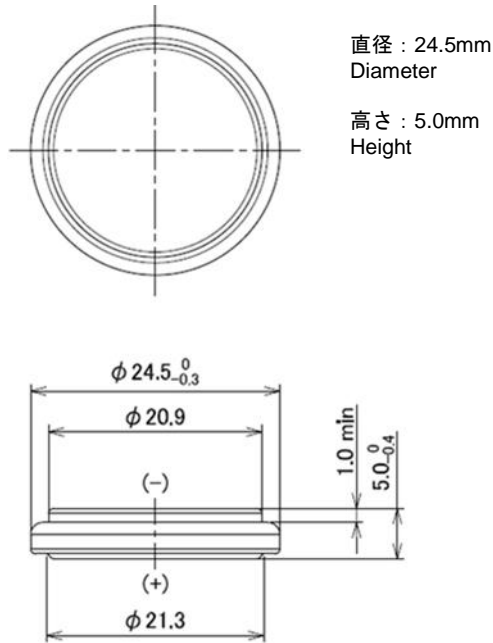


コイン形二酸化マンガンリチウム電池
Coin manganese dioxide lithium batteries

CR2450W

■外形寸法 Dimensions(mm)



(Unit : mm)

■定格 Specifications

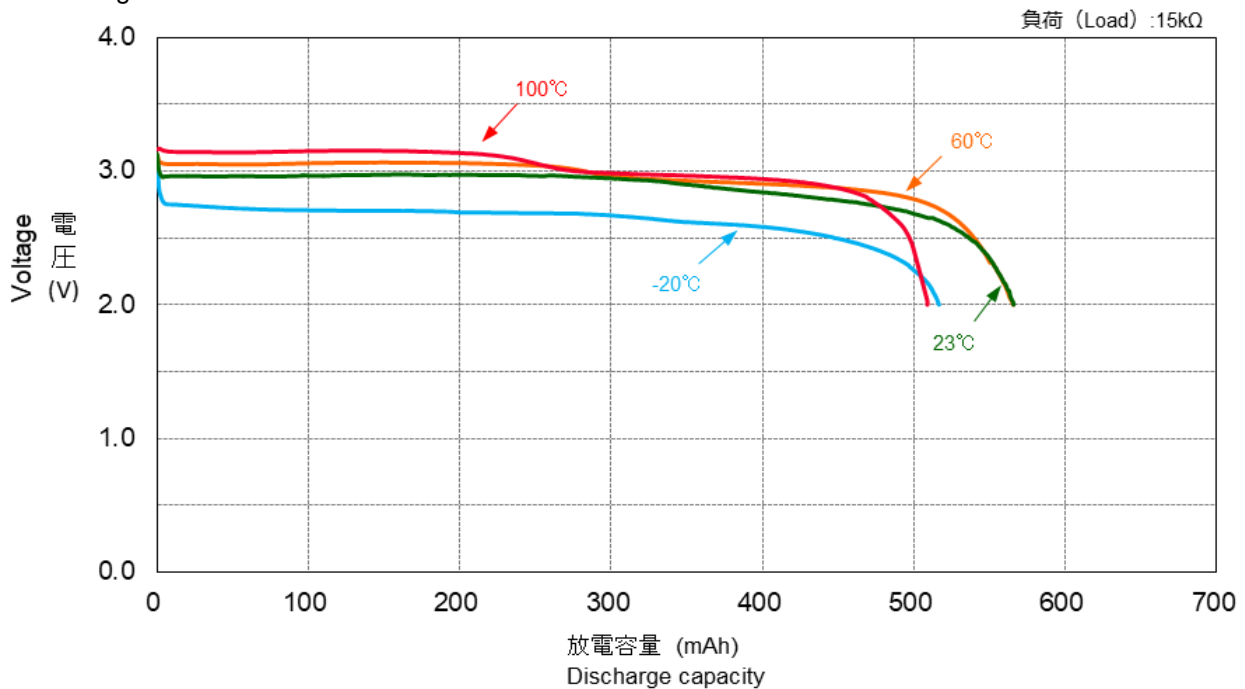
公称電圧 Nominal Voltage	3 V
公称容量 (終止電圧 2.0V) Nominal Capacity (2.0V cutoff)	550 mAh
推奨連続放電電流値 (容量利用率高) Recommended Continuous Discharge Current (High capacity usage rate)	≤ 1 mA
標準質量 Weight	6.7 g
使用温度範囲 Operating Temperature	-40 ~ +125°C

用途 Applications

- TPMS(タイヤ空気圧監視システム)
 - ETC
 - FA機器
 - SRAMやリアルタイムクロック等メモリーバックアップ
 - その他高温/低温環境で使われる機器
- TPMS (Tire Pressure Monitoring System)
 - ETC (Electronic Toll Collection System)
 - Factory Automation Instruments
 - Memory Back-up Power Source for SRAM and Real Time Clock (RTC)
 - Other devices used in wide temperature environment

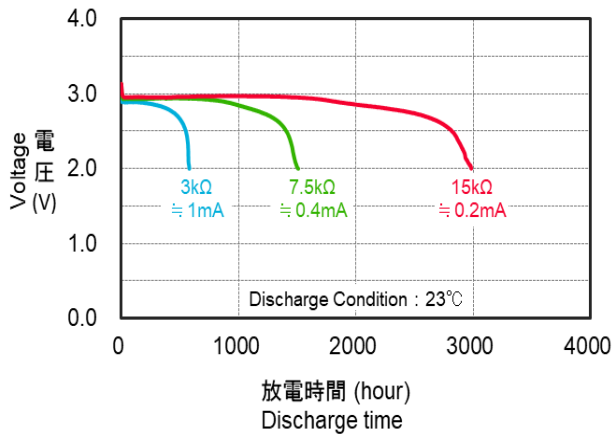
■放電特性

Discharge Characteristics



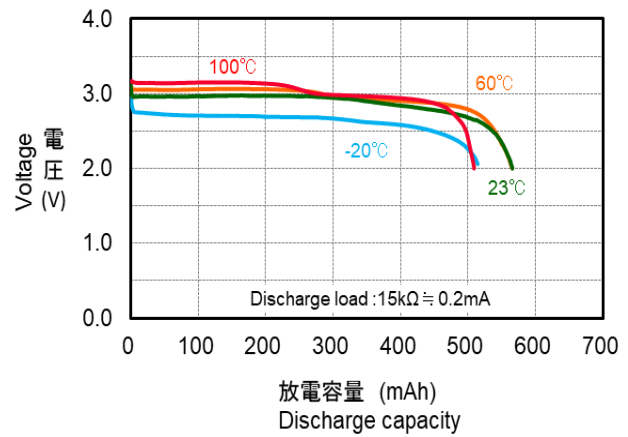
■ 放電負荷特性

Discharge Characteristics by Load



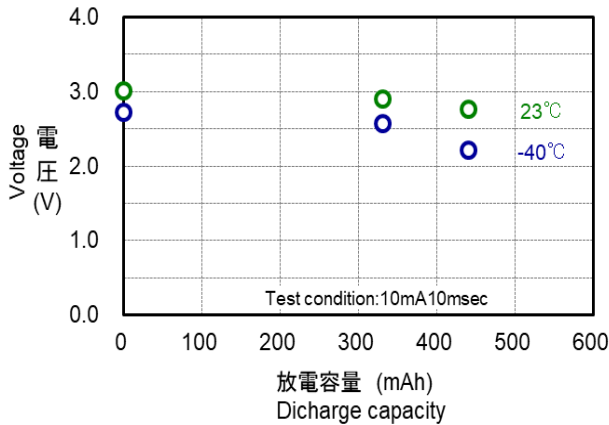
■ 放電温度特性

Discharge Characteristics by Temperature



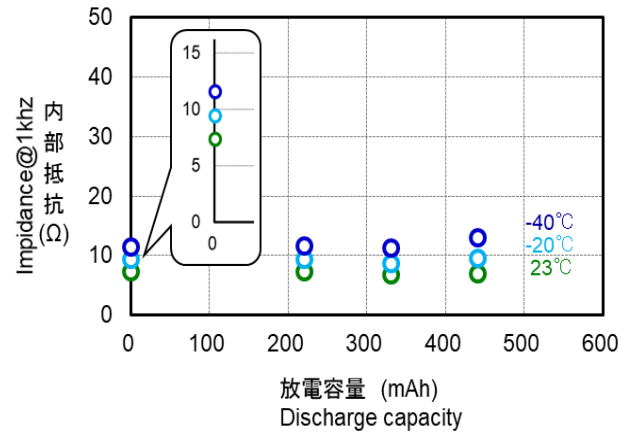
■ 閉路電圧特性

Closed Circuit Voltage by Temperature



■ 内部抵抗

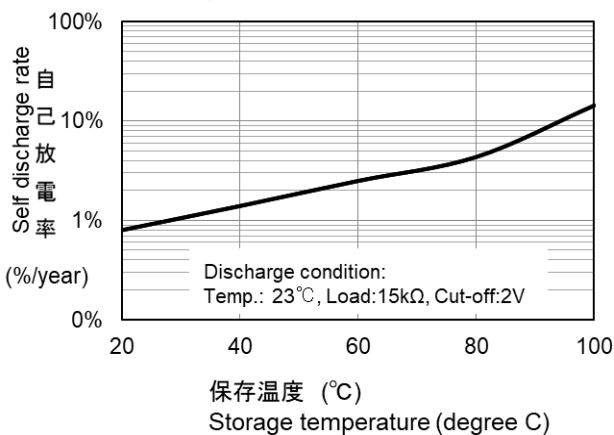
Impedance by Temperature



■ 自己放電特性

Self Discharge Characteristic by Temperature

注: 20°C未満の自己放電率は 20°Cと同じ自己放電率になります。
 Note: The self-discharge rate of less than 20°C shows the same self-discharge rate as 20°C.



*記載のデータ及び数値は、参考値であり保証値ではありません。
 *Data is not guaranteed, and is provided for reference purposes only.