

## **MINI-COM® Network Cabling System**

The new **MINI-COM** Network Cabling System offers innovative solutions for all your network cabling applications. The system is designed to maximize the performance of high speed communication networks and minimize the installed cost of network cabling systems. The **MINI-COM** Network Cabling System was developed with the input of architects and interior designers to provide an aesthetically pleasing solution that complements other key elements of the modern office workspace.

The **MINI-COM** Network Cabling System follows the belief that “smaller is better”. The overall height and depth of the snap-in, modular connectors have been reduced by over 20%. This decreases the amount of space which is required for making cable connections at the outlet or in the closet.

*This miniaturization facilitates the design of lower profile, higher density workstation outlet and telecommunication closet solutions.*



® NETWORK CABLING SYSTEM

### **Key Features of the MINI-COM® Network Cabling System Include:**

#### **Features**

- Modular design
- Media independent
- Broad range of solutions
- TIA Standards compliant (where applicable)
- 20 Year Guarantee, U.L. Verification
- Absolute modularity

#### **Benefits**

- Fast and easy moves, adds, and changes
- Modules for UTP, ScTP, coax, and single and duplex Fiber Optic ports
- Complete system for flush (in-wall), modular furniture and surface mount applications
- Compatible with all standards based networks
- Assurance of Category 5 performance
- Single modules allow individual port selection and revision

Contact Factory for **MOD-COM™** Applications. Note: **MINI-MOD™** Adapter on **page B37** snaps **MINI-COM** Modules and **OPTI-JACK™** Fiber Connectors into **MOD-COM** Products.

**Table of Contents**

Page



**MINI-COM® Faceplates**

Sloped Executive Series Faceplate Kit . . . . . B3  
**NEW STYLES!** Executive Series Bezels for Sloped, Flat and Blank Module Inserts . . . . . B4-B5  
 Executive Series Faceplates . . . . . B6-B7  
 Executive Series Faceplate and Surface Box Screw Covers . . . . . B8  
 Executive Series "GFCI" Faceplates . . . . . B8  
**NEW!** Designer Series Sloped Faceplate Kit . . . . . B9  
**NEW STYLES!** Designer Series Bezels for Sloped, Flat and Blank Module Inserts . . . . . B10  
**NEW!** Designer Series Vertical Faceplates . . . . . B11-B12  
**NEW!** Designer Series Horizontal Faceplates . . . . . B13  
**NEW!** Designer Series "GFCI" and "106" Duplex Faceplates . . . . . B14



**NEW!** MINI-COM "GFCI" Module Frame . . . . . B15  
**NEW!** MINI-COM "106" Frame . . . . . B16  
**NEW!** MINI-COM In-Wall Fiber Spool . . . . . B17-B18

**MINI-COM® Snap-On Modular Furniture Faceplates**

Snap-On Faceplates for Modular Furniture . . . . . B20-B22



**MINI-COM® Surface Mount Boxes**

**LOW PROFILE! NEW STYLES!** Surface Mount Boxes . . . . . B23-B26  
 Multi-Media/Fiber Outlets . . . . . B27-B28



**MINI-COM® Modules for UTP, ScTP, Coax & Fiber**

**MINI-JACK™** Category 5 Modular Jacks for UTP . . . . . B29-B30  
**NEW!** MINI-JACK Micro-Cap . . . . . B31  
**MINI-JACK** Category 5 Shielded Modular Jacks for ScTP . . . . . B32  
**MINI-JACK** Category 3 Modular Jacks for UTP . . . . . B33-B34  
 BNC and F Type Bulkhead Coax Modules . . . . . B35  
 SC and ST Fiber Optic Modules . . . . . B35  
**NEW COLORS!** RCA Connector and Coupler Modules . . . . . B36  
 Blank, **NEW!** SVHS Coupler, **MINI-MOD™** Adapter Modules . . . . . B37



**MINI-COM® Modular Patch Panels**

See "Closet Products" Section . . . . . D1

© NETWORK CABLING SYSTEM



## MINI-COM® Sloped Executive Series Faceplate

**MINI-COM** Sloped Executive Series Faceplates feature the aesthetic appeal of the Executive Series faceplate, the technical benefits of a sloped outlet, and the flexibility of single snap-in modules. Additional benefits of the sloped outlet include less depth required inside walls, furniture, and raceways, external protection at the modular plug/jack interface, and gradual cable bend radius for Category 5 and fiber applications. Outlet accepts all **MINI-COM** Connector Modules for Category 3 and 5 UTP, ScTP, Coax and Fiber applications. **OPTI-JACK™** Fiber Connector Modules found on [page E5](#).

- Individual modules snap in and out
- Dual module inserts are front releasable
- 6 decorator colors
- Screw mount design



- Excellent for Category 5 or fiber applications
- Executive faceplate screw covers can be used in place of clear label holders (ordered separately, see [page B8](#))
- Faceplate labels see [page Q25](#); module labels see [page Q23](#).

Modules - See [page B29](#)  
Labels - See [page Q23](#), [Q25](#)

Note: Modules sold separately.  
For use with **MINI-COM** Modules only.



Easy installation...modules snap in quickly.

Part Number	Description	Color	Std. Pkg. Qty.	Std. Ctn. Qty.
<b>4 Module Space, Single Gang Sloped Faceplate Kit*</b>				
CFPSE4IW	Single gang bezel and two sloped module inserts (2 module spaces each). Supplied with mounting screws, labels and label holder/screw covers.	Off White	1	10
CFPSE4EI		Elec. Ivory	1	10
CFPSE4IG		Light Gray	1	10
CFPSE4WH		White	1	10
CFPSE4BL		Black	1	10
CFPSE4RD	Depth to rear of modules: .65" (16.5)	Red	1	10

**ORDERING INFORMATION:**

Order number of kits required, in multiples of Standard Package Quantity.

To order wall board adapter, see [page B19](#).

\*Kit includes one bezel (see [page B4](#)) and two sloped inserts (see [page B5](#)).



Front releasable inserts allow you to access both the modules and the cable without unscrewing the faceplate from the wall.



Sloped design protects cable connections and helps maintain proper bend radius.

EXECUTIVE SERIES FACEPLATES

### MINI-COM® Executive Series Bezels for Sloped, Flat and Blank Module Inserts

**MINI-COM** Executive Series Bezels and Module Inserts feature the aesthetic appeal of the Executive Series faceplate and give you even greater flexibility to customize your installation. The module inserts allow you to create sloped or flush outlets. You can even mix or match the inserts to meet your exact requirements. The new Bezels are available in both single and double gang styles and each insert accepts up to two **MINI-COM** Snap-in Connector Modules for Category 3 and 5 UTP, ScTP, Coax and Fiber applications. **OPTI-JACK™** Fiber Connector Modules found on [page E4](#).

- Individual modules snap in and out
- Module Inserts are front releasable
- 6 decorator colors
- Single or double gang styles
- Screw mount design



- Excellent for Category 5 or fiber applications
- Executive faceplate screw covers can be used in place of clear label holders (ordered separately, see [page B8](#))
- Faceplate labels see [page Q25](#); module labels see [page Q23](#).

• Module inserts see [page B5](#)

**Modules - See page B29**  
**Labels - See page Q23, Q25**

#### Bezels

CBE



CBE-2G



- Bezels accept snap-in module inserts as shown on next page (sold separately)
- Colors can be mixed or matched to complement any decor
- Allows you to customize your installation with your choice of module inserts

Part Number	Description	Color	Std. Pkg. Qty.	Std. Ctn. Qty.
-------------	-------------	-------	----------------	----------------

#### Single Gang Bezel

CBEIW	Single gang bezel accepts two 1/2 size	Off White	1	10
CBEEI	module inserts, three 1/3 size module	Elec. Ivory	1	10
CBEIG	inserts or one 2/3 size and one 1/3 size	Light Gray	1	10
CBEWH	module inserts shown on the next page.	White	1	10
CBEBL	Supplied with mounting screws, labels and	Black	1	10
CBERD	label holder/screw covers.	Red	1	10

#### Double Gang Bezel

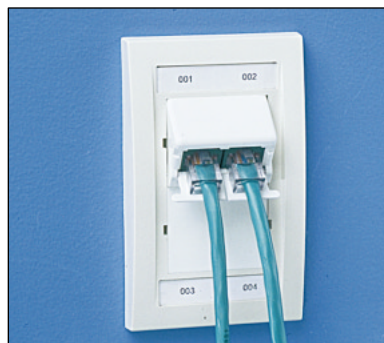
CBEIW-2G	Double gang bezel which accepts up to four	Off White	1	10
CBEEI-2G	1/2 size module inserts, six 1/3 size	Elec. Ivory	1	10
CBEIG-2G	modular inserts or two 2/3 size module	Light Gray	1	10
CBEWH-2G	inserts and two 1/3 size module inserts	White	1	10
CBEBL-2G	shown on the next page.	Black	1	10
CBERD-2G	Supplied with mounting screws, labels and	Red	1	10
	label holder/screw covers.			

#### ORDERING INFORMATION:

Order number of pieces required, in multiples of Standard Package Quantity.  
To order wall board adapter, see [page B19](#).



You can create flush installations...



Sloped installations...



...and mix or match module inserts.



Module Inserts for Executive Series Bezels

CHS2



Part Number	Description	Color	Std. Pkg. Qty.	Std. Ctn. Qty.
-------------	-------------	-------	----------------	----------------

2 Module Space, 1/2 size, Sloped Module Insert

CHS2IW-X	Sloped module insert accepts up to two <b>MINI-COM</b> Modules and accommodates up to 1/2 of a single gang bezel. Depth to rear of modules: .65" (16.5)	Off White	10	50
CHS2EI-X		Elec. Ivory	10	50
CHS2IG-X		Light Gray	10	50
CHS2WH-X		White	10	50
CHS2BL-X		Black	10	50
CHS2RD-X		Red	10	50

CHS2S



2 Module Space, 1/2 size, Sloped Module Insert with Protective Shutters

CHS2SIW-X	Sloped module insert with protective shutters accepts up to two <b>MINI-COM</b> Modules and accommodates up to 1/2 of a single gang bezel. Shutters are spring loaded and rotate out of the way for cable connections. Depth to rear of modules: .65" (16.5)	Off White	10	50
CHS2SEI-X		Elec. Ivory	10	50
CHS2SIG-X		Light Gray	10	50
CHS2SWH-X		White	10	50
CHS2SBL-X		Black	10	50
CHS2SRD-X		Red	10	50

CHF2



2 Module Space, 1/2 size, Flat Module Insert

CHF2IW-X	Flat module insert accepts up to two <b>MINI-COM</b> Modules and accommodates up to 1/2 of a single gang bezel. Depth to rear of modules: 1.0" (25.4)	Off White	10	50
CHF2EI-X		Elec. Ivory	10	50
CHF2IG-X		Light Gray	10	50
CHF2WH-X		White	10	50
CHF2BL-X		Black	10	50
CHF2RD-X		Red	10	50

CHS2R



2 Module Space, 1/2 size, Sloped, Recessed Module Insert

CHS2RIW-X	Accepts up to two <b>MINI-COM</b> Modules and accommodates up to 1/2 of a single gang bezel. Depth to rear of modules: 1.125" (28.6)	Off White	10	50
CHS2REI-X		Elec. Ivory	10	50
CHS2RIG-X		Light Gray	10	50
CHS2RWH-X		White	10	50
CHS2RBL-X		Black	10	50
CHS2RRD-X		Red	10	50

CHB2



1/2 size, Blank Module Insert

CHB2IW-X	Blank module insert reserves space for future modules and accommodates up to 1/2 of a single gang bezel.	Off White	10	50
CHB2EI-X		Elec. Ivory	10	50
CHB2IG-X		Light Gray	10	50
CHB2WH-X		White	10	50
CHB2BL-X		Black	10	50
CHB2RD-X		Red	10	50

CHF2M



2 Module Space, 1/3 Size Flat Module Insert

CHF2MIW-X	Flat insert accepts up to two <b>MINI-COM</b> Modules and accommodates 1/3rd of a single gang bezel. Twelve ports maximum in a double gang bezel. Depth to rear of modules: 1.0" (25.4)	Off White	10	50
CHF2MEI-X		Elec. Ivory	10	50
CHF2MIG-X		Light Gray	10	50
CHF2MBL-X		Black	10	50
CHF2MWH-X		White	10	50
CHF2MRD-X		Red	10	50

CHS2R2



2 Module Space, 2/3 Size, Sloped, Recessed Module Insert

CHS2R2IW-X	Accepts up to two <b>MINI-COM</b> Modules and accommodates 2/3rd's of a single gang bezel. Offers the benefits of a sloped module insert with added protection and modularity. Depth to rear of modules: 1.125" (28.6)	Off White	10	50
CHS2R2EI-X		Elec. Ivory	10	50
CHS2R2IG-X		Light Gray	10	50
CHS2R2BL-X		Black	10	50
CHS2R2WH-X		White	10	50
CHS2R2RD-X		Red	10	50

CHB2M



1/3 Size, Blank Module Insert

CHB2MIW-X	Blank module insert reserves space for future modules and accommodates 1/3rd of a single gang bezel.	Off White	10	50
CHB2MEI-X		Elec. Ivory	10	50
CHB2MIG-X		Light Gray	10	50
CHB2MBL-X		Black	10	50
CHB2MWH-X		White	10	50
CHB2MRD-X		Red	10	50

\* Module Inserts accept **MINI-COM** Modules and **OPTI-JACK™** Fiber Optic Connectors.

ORDERING INFORMATION:  
Order number of pieces required, in multiples of Standard Package Quantity.

# MINI-COM® Executive Series Faceplates

**MINI-COM** Executive Series Faceplates, designed with the input of architects and interior designers, provide an aesthetically pleasing solution that complements the modern office workspace. High density single and double gang versions accept all **MINI-COM** Connector Modules for Category 3 and 5 UTP, ScTP, Coax and Fiber applications. **OPTI-JACK™** Fiber Connector Modules found on [page E4](#).

- Individual modules snap in and out
- 6 decorator colors
- Screw mount design



- Executive faceplate screw covers can be used in place of clear label holders (ordered separately, see [page B8](#))
- Faceplate labels see [page Q25](#); module labels see [page Q23](#).

Note: Modules sold separately. For use with **MINI-COM** modules only.

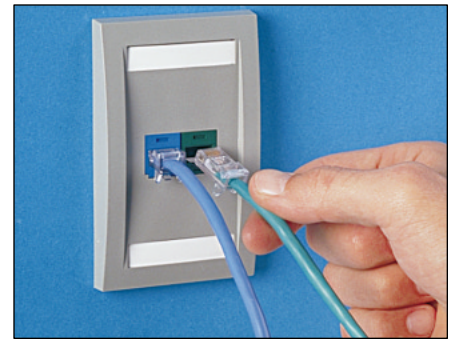
**Modules - See page B29**  
**Labels - See page Q23, Q25**



1. Snap in terminated **MINI-COM** modules.



2. Install **MINI-COM** Executive Series Faceplate.



3. Plug in cables for network, phone, fax, etc.

EXECUTIVE SERIES FACEPLATES

CFPE1



CFPE2



Part Number	Description	Color	Std. Pkg. Qty.	Std. Ctn. Qty.
-------------	-------------	-------	----------------	----------------

**1 Module Space, Single Gang Faceplate**

CFPE1IW	Single gang faceplate holds a single <b>MINI-COM</b> Connector Module. Supplied with mounting screws, labels and label holder/screw covers.	Off White	1	10
CFPE1EI		Elec. Ivory	1	10
CFPE1IG		Light Gray	1	10
CFPE1WH		White	1	10
CFPE1BL		Black	1	10
CFPE1RD	Depth to rear of modules: 1.0" (25.4)	Red	1	10

**2 Module Space, Single Gang Faceplate**

CFPE2IW	Single gang faceplate holds up to two <b>MINI-COM</b> Connector Modules. Supplied with mounting screws, labels and label holder/screw covers.	Off White	1	10
CFPE2EI		Elec. Ivory	1	10
CFPE2IG		Light Gray	1	10
CFPE2WH		White	1	10
CFPE2BL		Black	1	10
CFPE2RD	Depth to rear of modules: 1.0" (25.4)	Red	1	10

**ORDERING INFORMATION:**

Order number of pieces required, in multiples of Standard Package Quantity. To order wall board adapter, see [page B19](#).

Faceplates are designed for vertical mounting; however, they can be used for horizontal mounting applications.



# MINI-COM® Executive Series Faceplates

Note: Modules sold separately.  
For use with **MINI-COM** Modules only.



CFPE4



CFPE6



CFPE10

Faceplates are designed for vertical mounting; however, they can be used for horizontal mounting applications.

Part Number	Description	Color	Std. Pkg. Qty	Std. Ctn. Qty.
-------------	-------------	-------	---------------	----------------

### 4 Module Space, Single Gang Faceplate

CFPE4IW	Single gang faceplate holds up to four <b>MINI-COM</b> Connector Modules. Supplied with mounting screws, labels and label holder/screw covers.	Off White	1	10
CFPE4EI		Elec. Ivory	1	10
CFPE4IG		Light Gray	1	10
CFPE4WH		White	1	10
CFPE4BL		Black	1	10
CFPE4RD	Depth to rear of modules: 1.0" (25.4)	Red	1	10

### 6 Module Space, Single Gang Faceplate

Note: Requires minimum opening of 1.9"W x 2.0"H (May not fit in all boxes - Check your box dimensions)

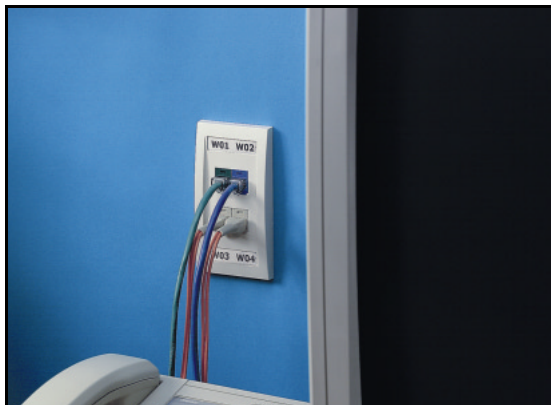
CFPE6IW	Single gang faceplate holds up to six <b>MINI-COM</b> Connector Modules. Supplied with mounting screws, labels and label holder/screw covers.	Off White	1	10
CFPE6EI		Elec. Ivory	1	10
CFPE6IG		Light Gray	1	10
CFPE6WH		White	1	10
CFPE6BL		Black	1	10
CFPE6RD	Depth to rear of modules: 1.0" (25.4)	Red	1	10

### 10 Module Space, Double Gang Faceplate

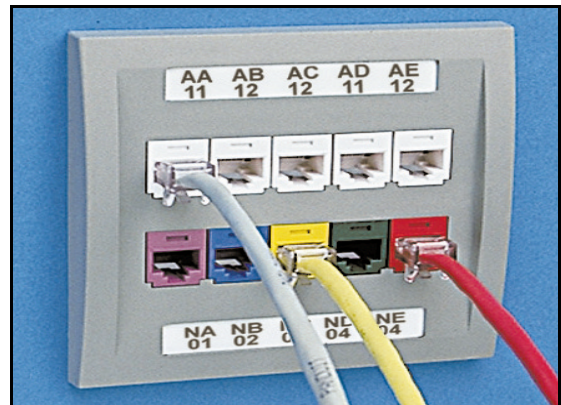
CFPE10IW-2G	Double gang faceplate holds up to ten <b>MINI-COM</b> Connector Modules. Supplied with mounting screws, labels and label holder/screw covers.	Off White	1	10
CFPE10EI-2G		Elec. Ivory	1	10
CFPE10IG-2G		Light Gray	1	10
CFPE10WH-2G		White	1	10
CFPE10BL-2G		Black	1	10
CFPE10RD-2G	Depth to rear of modules: 1.0" (25.4)	Red	1	10

### ORDERING INFORMATION:

Order number of pieces required, in multiples of Standard Package Quantity.  
To order wall board adapter, see [page B19](#).



4 module space **MINI-COM** Executive Series Faceplate handles cabling requirements for most typical workstations.



10 module space **MINI-COM** Executive Series Faceplate is excellent for high density cabling applications.

EXECUTIVE SERIES FACEPLATES

### Screw Covers for Executive Faceplate and Surface Boxes



- Designed for use in place of clear label covers
- Works with all single gang **MINI-COM** Executive faceplates

Note: Screw cover can also be used with **MINI-COM** 4 and 6 module space surface mount boxes (see [page B25](#)) and 6 and 12 module space multi-media/fiber outlets (see [page B28](#))

Part Number	Description	Color	Std. Pkg. Qty	Std. Ctn. Qty.
-------------	-------------	-------	---------------	----------------

#### Executive Faceplate and Surface Box Screw Cover

<b>CSCIW-X</b>	Screw cover has a textured surface. It blends in with the faceplates for improved aesthetics. It snaps in quickly to speed installation.	Off White	10	50
<b>CSCEI-X</b>		Elec. Ivory	10	50
<b>CSCIG-X</b>		Light Gray	10	50
<b>CSCWH-X</b>		White	10	50
<b>CSCBL-X</b>		Black	10	50
<b>CSCRD-X</b>		Red	10	50

#### ORDERING INFORMATION:

Order number of pieces required, in multiples of Standard Package Quantity.



1. Install **MINI-COM** Executive Series Faceplate



2. Apply adhesive label to inside of screw cover. See [page Q25](#) for labels.



3. Snap screw cover onto faceplate

### Executive Series "GFCI" Faceplates

ECPG



Part Number	Description	Color	Std. Pkg. Qty	Std. Ctn. Qty.
-------------	-------------	-------	---------------	----------------

#### Single Gang "GFCI" Faceplate

<b>ECPGIW</b>	Accepts one <b>MINI-COM</b> GFCI Frame (See <a href="#">page B15</a> ) or single, NEMA standard "GFCI" switches or receptacles. Supplied with screws.	Off White	1	10
<b>ECPGEI</b>		Elec. Ivory	1	10
<b>ECPGIG</b>		Light Gray	1	10
<b>ECPGWH</b>		White	1	10
<b>ECPGBL</b>		Black	1	10
<b>ECPGRD</b>		Red	1	10

Can be used with Panduit T70 Raceway for communications or power applications, see [page K1](#).

NOTE: Not for use with wall board adapters

ECPG-2G



#### Double Gang "GFCI" Faceplate

<b>ECPGIW-2G</b>	Accepts two <b>MINI-COM</b> GFCI Frames (see <a href="#">page B15</a> ) or two NEMA standard "GFCI" switches or receptacles. Supplied with screws.	Off White	1	10
<b>ECPGEI-2G</b>		Elec. Ivory	1	10
<b>ECPGIG-2G</b>		Light Gray	1	10
<b>ECPGWH-2G</b>		White	1	10
<b>ECPGBL-2G</b>		Black	1	10
<b>ECPGRD-2G</b>		Red	1	10

#### ORDERING INFORMATION:

Order number of pieces required, in multiples of Standard Package Quantity.

NOTE: Not for use with wall board adapters

- Stylish design matches Panduit Executive Series communication faceplates
- Designed for in-wall box applications





# MINI-COM® Sloped Designer Series Faceplates

**MINI-COM** Sloped Designer Series Faceplates feature the aesthetic appeal of the Designer Series faceplate, the technical benefits of a sloped outlet, and the flexibility of single snap-in modules. Additional benefits of the sloped outlet include less depth required inside walls, furniture, and raceways, external protection at the modular plug/jack interface, and gradual cable bend radius for Category 5 and fiber applications. Outlet accepts all **MINI-COM** Connector Modules for Category 3 and 5 UTP, ScTP, Coax and Fiber applications. **OPTI-JACK™** Fiber Connector Modules found on [page E4](#).

- Individual modules snap in and out
- Dual module inserts are front releasable
- 6 decorator colors



- Excellent for Category 5 or fiber applications
- Faceplate labels see [page Q25](#); module labels see [page Q23](#)
- Screw mount design

Modules - See [page B29](#)  
Labels - See [page Q23, Q25](#)

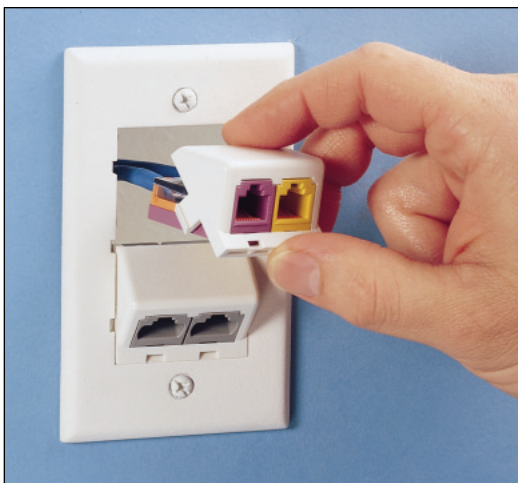
Note: Modules sold separately.  
For use with **MINI-COM** Modules only.



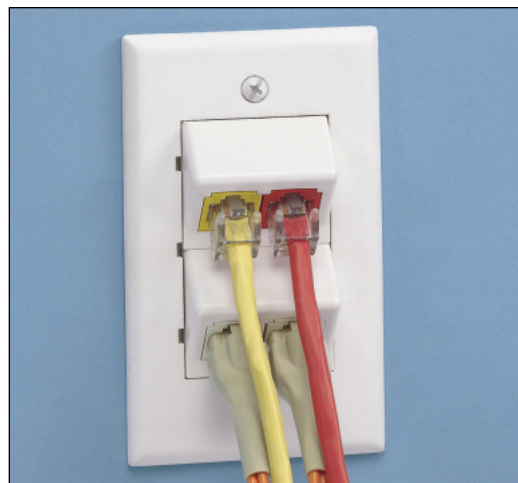
Easy installation...modules snap in quickly.

Part Number	Description	Color	Std. Pkg. Qty.	Std. Ctn. Qty.
<b>4 Module Space, Single Gang Sloped Faceplate Kit</b>				
CFPS4IW	Single gang bezel and two sloped module inserts (2 module spaces each). Supplied with mounting screws.	Off White	1	10
CFPS4EI		Elec. Ivory	1	10
CFPS4IG		Light Gray	1	10
CFPS4WH		White	1	10
CFPS4BL		Black	1	10
CFPS4RD		Red	1	10
Depth to rear of modules: .65" (16.5)				

**ORDERING INFORMATION:**  
Order number of kits required, in multiples of Standard Package Quantity.  
To order wall board adapter, see [page B19](#).



Front releasable module inserts allow you to access both the modules and the cable without unscrewing the faceplate from the wall.



Sloped design protects cable connections and helps maintain proper bend radius.

DESIGNER SERIES FACEPLATES



### MINI-COM® Designer Series Bezels for Sloped, Flat and Blank Module Inserts

**MINI-COM** Designer Series Bezels and Module Inserts feature the aesthetic appeal of the Designer Series Faceplate and even greater flexibility to customize your installation. The module inserts allow you to create sloped or flush outlets. You can mix or match the module inserts to meet your exact requirements. The new Bezels are available in both single and double gang styles and each insert accepts up to two **MINI-COM** Snap-in Connector Modules for Category 3 and 5 UTP, ScTP, Coax and Fiber applications. **OPTI-JACK™** Fiber Connector Modules found on [page E4](#).

- Individual modules snap in and out
- Module inserts are front releasable
- 6 decorator colors



- Single or double gang styles
- Excellent for Category 5 or fiber applications
- Faceplate labels see [page Q25](#); module labels see [page Q23](#)

Modules - See [page B29](#)  
Labels - See [page Q29](#)

#### Bezels CB



#### CB-2G



- Bezels accept snap-in module inserts as shown on [page B5](#) (sold separately)
- Colors can be mixed or matched to complement any decor
- Allow you to customize your installation with your choice of inserts

Part Number	Description	Color	Std. Pkg. Qty.	Std. Ctn. Qty.
<b>Single Gang Bezel</b>				
<b>CBIW</b>	Single gang bezel accepts two 1/2 size module inserts, three 1/3 size module inserts or one 2/3 size and one 1/3 size	Off White	1	10
<b>CBEI</b>		Elec. Ivory	1	10
<b>CBIG</b>		Light Gray	1	10
<b>CBWH</b>	module inserts shown on <a href="#">page B9</a> .	White	1	10
<b>CBBL</b>	Supplied with mounting screws.	Black	1	10
<b>CBRD</b>		Red	1	10

#### Double Gang Bezel

<b>CBIW-2G</b>	Double gang bezel accepts up to four 1/2 size module inserts, six 1/3 size module inserts or two 2/3 size module inserts and two 1/3 size module inserts shown on <a href="#">page B9</a> . Supplied with mounting screws.	Off White	1	10
<b>CBEI-2G</b>		Elec. Ivory	1	10
<b>CBIG-2G</b>		Light Gray	1	10
<b>CBWH-2G</b>		White	1	10
<b>CBBL-2G</b>		Black	1	10
<b>CBRD-2G</b>		Red	1	10

#### ORDERING INFORMATION:

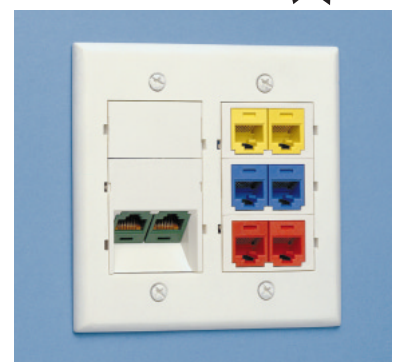
Order number of pieces required, in multiples of Standard Package Quantity. To order wall board adapter, see [page B19](#).



You can create flush installations...



Sloped installations...



Mix or match module inserts. There's even a blank to reserve space for future needs.

DESIGNER SERIES FACEPLATES



**NEW** MINI-COM® Designer Series Vertical Faceplates

**MINI-COM** Designer Series Faceplates, provide an economical, aesthetically pleasing solution that compliments the modern office workplace. High density single and double gang versions accept all **MINI-COM** Connector Modules for Category 3 and 5 UTP, ScTP, Coax and Fiber applications. **OPTI-JACK™** Fiber Connector Modules found on [page E4](#).

- Individual modules snap in and out
- 6 decorator colors



- Faceplate labels see [page Q25](#); module labels see [page Q23](#)

Note: Modules sold separately. For use with **MINI-COM** modules only.

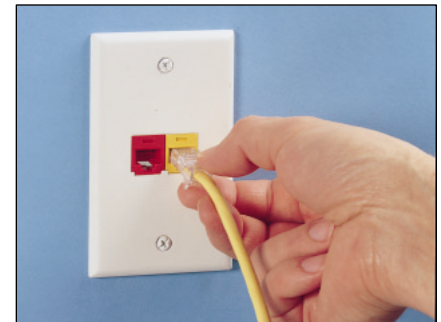
Modules - See [page B29](#)  
Labels - See [page Q23, Q25](#)



1. Snap in terminated **MINI-COM** modules.



2. Install **MINI-COM** Designer Series Faceplate.



3. Plug in cables for network, phone, fax, etc.

CFP1



Part Number	Description	Color	Std. Pkg. Qty.	Std. Ctn. Qty.
<b>1 Module Space, Single Gang Faceplate</b>				
CFP1IW	Single gang faceplate holds a single <b>MINI-COM</b> Connector Module. Supplied with mounting screws.	Off White	1	10
CFP1EI		Elec. Ivory	1	10
CFP1IG		Light Gray	1	10
CFP1WH		White	1	10
CFP1BL		Black	1	10
CFP1RD		Red	1	10
Depth to rear of modules: 1.125" (28.6)				

CFP2



<b>2 Module Space, Single Gang Faceplate</b>				
CFP2IW	Single gang faceplate holds up to two <b>MINI-COM</b> Connector Modules. Supplied with mounting screws.	Off White	1	10
CFP2EI		Elec. Ivory	1	10
CFP2IG		Light Gray	1	10
CFP2WH		White	1	10
CFP2BL		Black	1	10
CFP2RD		Red	1	10
Depth to rear of modules: 1.125" (28.6)				

Faceplates are designed for vertical mounting; however, they can be used for horizontal mounting applications. See [page B13](#) for our NEW two and four module space horizontal faceplates.

**ORDERING INFORMATION:**

Order number of pieces required, in multiples of Standard Package Quantity. To order wall board adapter, see [page B19](#).

DESIGNER SERIES FACEPLATES

### MINI-COM® Designer Series Faceplates (cont.)

CFP4



Part Number	Description	Color	Std. Pkg. Qty	Std. Ctn. Qty.
<b>4 Module Space, Single Gang Faceplate</b>				
CFP4IW	Single gang faceplate holds up to four <b>MINI-COM</b> Connector Modules. Supplied with mounting screws.  Depth to rear of modules: 1.125" (28.6)	Off White	1	10
CFP4EI		Elec. Ivory	1	10
CFP4IG		Light Gray	1	10
CFP4WH		White	1	10
CFP4BL		Black	1	10
CFP4RD		Red	1	10

CFPF6



Part Number	Description	Color	Std. Pkg. Qty	Std. Ctn. Qty.
<b>6 Module Space, Single Gang Faceplate Kit</b>				
CFPF6IW	Single gang bezel and three flat module inserts (2 module spaces each). Supplied with mounting screws.  Depth to rear of modules: 1.125" (28.6)	Off White	1	10
CFPF6EI		Elec. Ivory	1	10
CFPF6IG		Light Gray	1	10
CFPF6WH		White	1	10
CFPF6BL		Black	1	10
CFPF6RD		Red	1	10

CFPF12



Part Number	Description	Color	Std. Pkg. Qty	Std. Ctn. Qty.
<b>12 Module Space, Double Gang Faceplate Kit</b>				
CFPF12IW-2G	Double gang bezel and six flat module inserts (2 module spaces each). Supplied with mounting screws.  Depth to rear of modules: 1.125" (28.6)	Off White	1	10
CFPF12EI-2G		Elec. Ivory	1	10
CFPF12IG-2G		Light Gray	1	10
CFPF12WH-2G		White	1	10
CFPF12BL-2G		Black	1	10
CFPF12RD-2G		Red	1	10

**ORDERING INFORMATION:**

Order number of pieces required, in multiples of Standard Package Quantity.  
To order wall board adapter, see [page B19](#).

Note: Modules sold separately.  
For use with **MINI-COM** Modules only.



6 Module space version features front access for fast moves, adds and changes



12 Module space version features front access and high density





# MINI-COM® Designer Series Horizontal Faceplates

**MINI-COM** Designer Series Faceplates, provide an economical, aesthetically pleasing solution that complements the modern office workplace. High density single gang versions accept all **MINI-COM** Connector Modules for Category 3 and 5 UTP, ScTP, Coax and Fiber applications. **OPTI-JACK™** Fiber Connector Modules found on [page E4](#).

- Individual modules snap in and out
- 6 decorator colors



- Module labels see [page Q23](#).

Note: Modules sold separately.  
For use with **MINI-COM** modules only.

Modules - See [page B29](#)  
Labels - See [page Q25](#)

## CFPH2



Part Number	Description	Color	Std. Pkg. Qty	Std. Ctn. Qty.
<b>2 Module Space, Horizontal Single Gang Faceplate</b>				
CFPH2IW	Single gang horizontal faceplate holds up to two <b>MINI-COM</b> Connector Modules. Supplied with mounting screws.	Off White	1	10
CFPH2EI		Elec. Ivory	1	10
CFPH2IG	Depth to rear of modules: 1.125" (28.6)	Light Gray	1	10
CFPH2WH		White	1	10
CFPH2BL		Black	1	10
CFPH2RD		Red	1	10

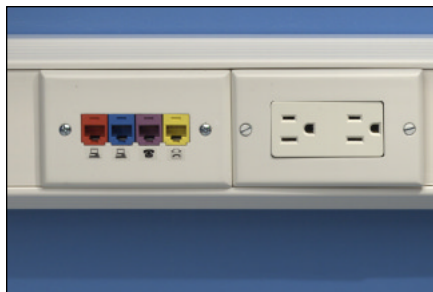
## CFPH4



Part Number	Description	Color	Std. Pkg. Qty	Std. Ctn. Qty.
<b>4 Module Space, Horizontal Single Gang Faceplate</b>				
CFPH4IW	Single gang horizontal faceplate holds up to four <b>MINI-COM</b> Connector Modules. Supplied with mounting screws.	Off White	1	10
CFPH4EI		Elec. Ivory	1	10
CFPH4IG	Depth to rear of modules: 1.125" (28.6)	Light Gray	1	10
CFPH4WH		White	1	10
CFPH4BL		Black	1	10
CFPH4RD		Red	1	10

### ORDERING INFORMATION:

Order number of pieces required, in multiples of Standard Package Quantity.  
To order wall board adapter, see [page B19](#).



Faceplates are designed for horizontal mounting applications.  
Panduit T-70 Raceway shown here. See [page K4](#).

DESIGNER SERIES FACEPLATES

### Designer Series "GFCI" Faceplate



Part Number	Description	Color	Std. Pkg. Qty	Std. Ctn. Qty.
-------------	-------------	-------	---------------	----------------

#### Single Gang "GFCI" Faceplate

CPGIW	Accepts one <b>MINI-COM</b> GFCI Module Frame (see <a href="#">page B15</a> ) or single, NEMA standard "GFCI" switches or receptacles. Supplied with screws.	Off White	1	10
CPGEI		Elec. Ivory	1	10
CPGIG		Light Gray	1	10
CPGWH		White	1	10
CPGBL		Black	1	10
CPGRD		Red	1	10



#### Double Gang "GFCI" Faceplate

CPGIW-2G	Accepts two <b>MINI-COM</b> GFCI Module Frames (see <a href="#">page B15</a> ) or two NEMA standard "GFCI" switches or receptacles. Supplied with screws.	Off White	1	10
CPGEI-2G		Elec. Ivory	1	10
CPGIG-2G		Light Gray	1	10
CPGWH-2G		White	1	10
CPGBL-2G		Black	1	10
CPGRD-2G		Red	1	10

- Stylish design matches Panduit Designer Series communication faceplates
- Designed for in-wall applications

#### ORDERING INFORMATION:

Order number of pieces required, in multiples of Standard Package Quantity.  
NOTE: Not for use with wall board adapters

### Designer Series "106" Duplex Faceplate



Part Number	Description	Color	Std. Pkg. Qty	Std. Ctn. Qty.
-------------	-------------	-------	---------------	----------------

#### Single Gang "106" Duplex Faceplate

CP106IW	Accepts one <b>MINI-COM</b> "106" Module Frame (see <a href="#">page B16</a> ) or single "106" switches or receptacles. Supplied with one screw.	Off White	1	10
CP106EI		Elec. Ivory	1	10
CP106IG		Light Gray	1	10
CP106WH		White	1	10
CP106BL		Black	1	10
CP106RD		Red	1	10



#### Double Gang "106" Quad Faceplate

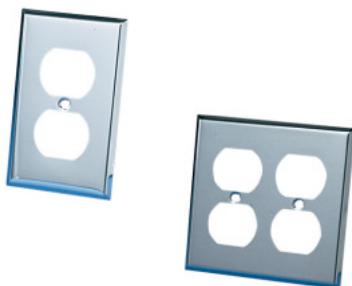
CP106IW-2G	Accepts two <b>MINI-COM</b> "106" Module Frames (see <a href="#">page B16</a> ) or two single "106" switches or receptacles. Supplied with screws.	Off White	1	10
CP106EI-2G		Elec. Ivory	1	10
CP106IG-2G		Light Gray	1	10
CP106WH-2G		White	1	10
CP106BL-2G		Black	1	10
CP106RD-2G		Red	1	10

- Stylish design matches Panduit Designer Series communication faceplates
- Designed for in-wall applications

#### ORDERING INFORMATION:

Order number of pieces required, in multiples of Standard Package Quantity.  
NOTE: Not for use with wall board adapters

### Stainless Steel "106" Duplex Faceplates



Part Number	Description	Color	Std. Pkg. Qty	Std. Ctn. Qty.
-------------	-------------	-------	---------------	----------------

#### Single Gang Stainless Steel "106" Duplex Faceplate

WPS-20	Accepts one <b>MINI-COM</b> 106 Frame (see <a href="#">page B16</a> ) or single "106" switches or receptacles. Supplied with one screw.	—	1	10
--------	---	---	---	----

#### Double Gang Stainless Steel "106" Duplex Faceplate

WPS-202	Accepts two <b>MINI-COM</b> 106 Frames (see <a href="#">page B16</a> ) or two single "106" switches or receptacles. Supplied with screws.	—	1	10
---------	---	---	---	----

#### ORDERING INFORMATION:

Order number of pieces required, in multiples of Standard Package Quantity.

DESIGNER SERIES FACEPLATES





## MINI-COM® “GFCI” Module Frames

The **MINI-COM** “GFCI” Module Frames allow you to use any standard GFCI faceplate to cover your communications outlet. **MINI-COM** “GFCI” Module Frames provide solutions for special communication applications such as power/telephone, poles, tombstones and in-floor boxes and accepts 1, 2 or 4 **MINI-COM** Snap-in Connector Modules for Category 5 UTP, ScTP, Coax and Fiber applications. **OPTI-JACK™** Fiber Connector Modules found on [page E4](#). Use with Executive Series “GFCI” Faceplates found on [page B8](#) and Designer Series “GFCI” Faceplates found on [page B14](#).

- Change only the modules required; Modules snap in or out individually
- Made from impact resistant thermoplastic



- Module labels see [page Q23](#)
- Mounts behind all standard NEMA faceplates
- 6 decorator colors to complement any decor

Modules - See [page B29](#)  
Labels - See [page Q23, Q25](#)

“GFCI” MODULE FRAMES

CFG1



Part Number	Description	Color	Std. Pkg. Qty	Std. Ctn. Qty.
<b>One Module Space “GFCI” Module Frame</b>				
CFG1IW	Mounts behind any standard GFCI electrical faceplate. Holds a single <b>MINI-COM</b> Connector Module.	Off White	1	10
CFG1EI		Elec. Ivory	1	10
CFG1IG	Depth to rear of modules: 1.125" (28.6)	Light Gray	1	10
CFG1WH		White	1	10
CFG1BL		Black	1	10
CFG1RD		Red	1	10

Note: Modules sold separately.  
For use with **MINI-COM** Modules only.

CFG2



Part Number	Description	Color	Std. Pkg. Qty	Std. Ctn. Qty.
<b>Two Module Space “GFCI” Module Frame</b>				
CFG2IW	Mounts behind any standard GFCI electrical faceplate. Holds two <b>MINI-COM</b> Connector Modules.	Off White	1	10
CFG2EI		Elec. Ivory	1	10
CFG2IG	Depth to rear of modules: 1.125" (28.6)	Light Gray	1	10
CFG2WH		White	1	10
CFG2BL		Black	1	10
CFG2RD		Red	1	10

CFG4



Part Number	Description	Color	Std. Pkg. Qty	Std. Ctn. Qty.
<b>Four Module Space “GFCI” Module Frame</b>				
CFG4IW	Mounts behind any standard GFCI electrical faceplate. Holds four <b>MINI-COM</b> Connector Modules.	Off White	1	10
CFG4EI		Elec. Ivory	1	10
CFG4IG	Depth to rear of modules: 1.125" (28.6)	Light Gray	1	10
CFG4WH		White	1	10
CFG4BL		Black	1	10
CFG4RD		Red	1	10

**ORDERING INFORMATION:**  
Order number of pieces required, in multiples of Standard Package Quantity.

**NEW MINI-COM® “106” Duplex Module Frame**

The **MINI-COM** “106” Duplex Module Frame allows you to use any standard 106 electrical faceplate to cover your communications outlet. It mounts behind all “106” standard NEMA faceplates including stainless steel, brass, wood-grained or plastic materials. The **MINI-COM** “106” Module Frame provides solutions for special communication applications such as communication/power poles, tombstones and in-floor boxes. It accepts 4 **MINI-COM** Snap-in Connector Modules for Category 5 UTP, ScTP, Coax and Fiber Optic applications. **OPTI-JACK™** Fiber Connector Modules found on [page E4](#). Use with Designer Series “106” Duplex Faceplates found on [page B14](#).

- Change only the modules required; Modules snap in or out individually
- Made from impact resistant thermoplastic



- Module labels see [page Q23](#)
- Mounts behind all “106” standard NEMA faceplates
- 6 decorator colors to complement any decor

**Modules - See [page B29](#)  
Labels - See [page Q23](#)**

CF1064



Part Number	Description	Color	Std. Pkg. Qty	Std. Ctn. Qty.
-------------	-------------	-------	---------------	----------------

**Four Module Space “106” Duplex Module Frame**

CF1064IW	Mounts behind any “106” duplex standard NEMA electrical faceplate. Holds four <b>MINI-COM</b> Connector Modules.	Off White	1	10
CF1064EI		Elec. Ivory	1	10
CF1064IG		Light Gray	1	10
CF1064WH		White	1	10
CF1064BL		Black	1	10
CF1064RD		Red	1	10
Depth to rear of modules: 1.125" (28.6)				

**ORDERING INFORMATION:**  
Order number of pieces required, in multiples of Standard Package Quantity.

- Accepts up to four **MINI-COM** Snap-in Connector Modules

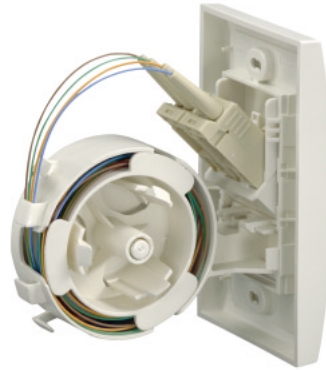
Note: Modules sold separately.  
For use with **MINI-COM** Modules only.

**“106” DUPLEX MODULE FRAMES**



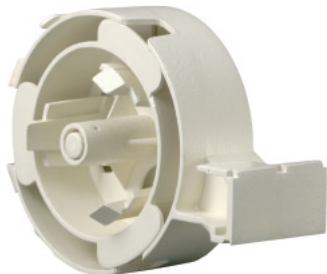
**NEW** **MINI-COM® In-Wall Fiber Spool**

**MINI-COM** In-Wall Fiber Spool (patent pending) provides storage for excess and slack fiber in flush, sloped and sloped recessed outlet applications as required in TIA/EIA 568-A. The two module space spool snaps into a variety of **MINI-COM** Faceplates and Bezels for optimum flexibility and modularity in multi-media environments. Ideal for use in fiber to desk applications with the **OPTI-JACK™** Fiber Connector Modules found on [page E4](#).



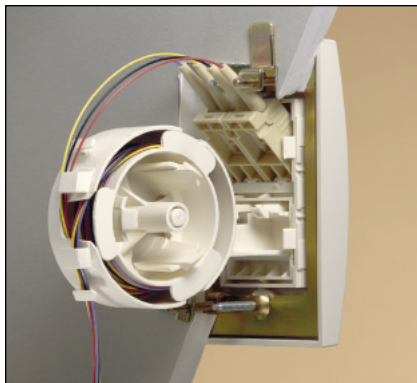
- 1" internal bend radius
- Cable entry/exit from rear, top and bottom helps maintain external bend radius
- 3.65" (92.7mm) depth from rear of faceplate. Not for use with in-wall boxes or in shallow walls. If depth is not adequate see Multimedia Boxes shown on [page B27](#) to [page B28](#).
- Designed for use with single or double gang wall board adapter. See [page B19](#).
- Stores up to 12 meters of unjacketed fiber cable or 2 meters of jacketed fiber cable.

**Standards: TIA/EIA-568-A requires a minimum 1 meter slack and a fiber spool for in-wall installations.**

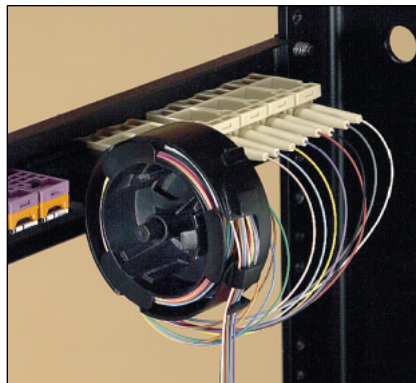


Part Number	Description	Color	Std. Pkg. Qty.	Std. Ctn. Qty.
<b>Two Module In Wall Fiber Spool</b>				
CFS2IW CFS2EI CFS2IG CFS2WH CFS2BL CFS2RD	Two piece fiber spool for use with most <b>MINI-COM</b> faceplates, bezels and inserts. See <a href="#">page B18</a> to determine which combination best fits the application.	Off White Elec. Ivory Light Gray White Black Red	1	10

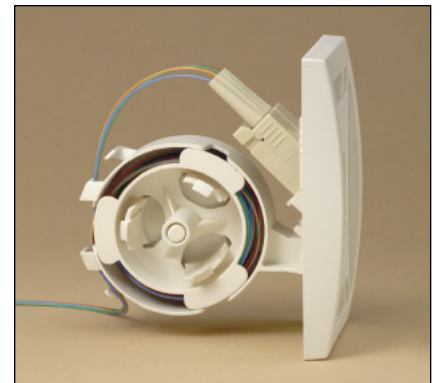
**ORDERING INFORMATION:**  
Order number of pieces required, in multiples of Standard Package Quantity.



- Fiber spool can be mounted into many different faceplate configurations providing custom fit capabilities





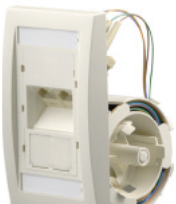


- Fiber spool can be used with our modular patch panels see [page D3](#) and [page D4](#).







- Together with our recessed and sloped inserts, the fiber spool provides complete TIA/EIA-568-A compliance

### MINI-COM® In-Wall Fiber Spool (cont.)

- The fiber spool requires a minimum depth of 3.65" (92.7 mm) from rear of faceplate in all cases.
- Designed for use with wall board adapters. Not recommended for use with shallow in-wall boxes or shallow walls.
- Contact factory for specific application questions if your particular application is not listed.
- Only single gang applications are shown. The same restrictions apply to the one side of double gang faceplates on which the spool is mounted.
- Fiber spool can not be mounted into sloped inserts or sloped faceplates.

Faceplate Part Numbers	Application	
CBE** (See <a href="#">page B4</a> ) or CB** (See <a href="#">page B10</a> ) 2 CHF**-X (See <a href="#">page B5</a> )		Need a minimum depth of 3.65" (92.7mm)
CBE** (See <a href="#">page B4</a> ) or CB** (See <a href="#">page B10</a> ) 1 CHF2**-X, 1 CHS2(S)**-X or CHSR2**-X (See <a href="#">page B5</a> )		Need a minimum depth of 3.65" (92.7mm). The CHS2(S) or CHSR2 insert must be mounted above the CHF2 insert. The spool must be mounted into the CHF2 insert.
CBE** (See <a href="#">page B4</a> ) or CB** (See <a href="#">page B10</a> ) 1 CHF2M** or 1 CHS2R2**-X (See <a href="#">page B5</a> )		Need a minimum depth of 3.65" (92.7mm). The CHS2R2 insert must be mounted above the CHF2M insert. The spool must be mounted into the CHF2M insert
CBE** (See <a href="#">page B4</a> ) or CB** (See <a href="#">page B10</a> ) 2 CHF2M**-X or 1 CHB2M**-X (See <a href="#">page B5</a> )		Need a minimum depth of 3.65" (92.7mm). The CHB2M insert must be mounted between the two CHF2M inserts
CFPE4 (See <a href="#">page B7</a> ) or CFP4 (See <a href="#">page B12</a> )		Need a minimum depth of 3.65" (92.7mm).

Faceplate Part Numbers	Application	
CFPE6** (See <a href="#">page B7</a> )		Need a minimum depth of 3.65" (92.7mm).
CFPE10**-2G (See <a href="#">page B7</a> )		Need a minimum depth of 3.65" (92.7mm).
CFPH4** (See <a href="#">page B13</a> )		Need a minimum depth of 3.65" (92.7mm).
CFG4** (See <a href="#">page B15</a> ) CF1064** (See <a href="#">page B16</a> )		Need a minimum depth of 3.65" (92.7mm).

NOTE: The Fiber Spool can also be used with all 24 port and higher modular patch panels except CP24WSBL, CP48WSBL and CP72BL found on [page D4](#).  
The Fiber Spool can not be used with modular patch panels that are used with the FMT24 found on [page D25](#).

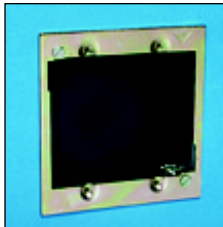


Wall Board Adapters

MWBA1



MWBA-2G



Part Number	Description	Std. Pkg. Qty.	Std. Ctn. Qty.
-------------	-------------	----------------	----------------

Single Gang Wall Board Adapter

MWBA1	Replacement for single gang in-wall box in communication applications. Mounting hole spacing of 3.28" (83.5mm).	1	10
-------	--	---	----

Double Gang Wall Board Adapter

MWBA-2G	Replacement for double gang in-wall boxes in communication applications. Mounting hole spacing of 3.28" (83.5mm).	1	10
---------	--	---	----

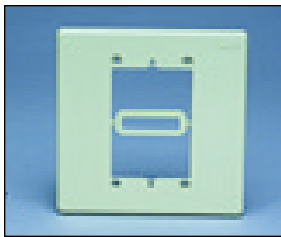
ORDERING INFORMATION:

Order number of pieces required, in multiples of Standard Package Quantity.

NOTE: Contact factory for optional installation template.

In-Wall Box Adapters

MIWBA

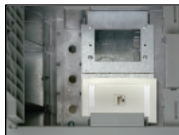


Part Number	Description	Color	Std. Pkg. Qty.	Std. Ctn. Qty.
MIWBAIW	Allows mounting of <b>MINI-COM</b> single gang faceplates and surface boxes to double gang in-wall boxes and box eliminators, both horizontally and vertically.	Off White	1	10
MIWBAEI		Elec. Ivory	1	10
MIWBAIG		Light Gray	1	10
MIWBAWH		White	1	10
MIWBABL		Black	1	10

ORDERING INFORMATION:

Order number of pieces required, in multiples of Standard Package Quantity.

In-Floor Adapter Plate



Part Number	Description	Std. Pkg. Qty.	Std. Ctn. Qty.
-------------	-------------	----------------	----------------

In-Floor Box Adapter Plate

MIFBA	Allows <b>MINI-COM</b> single gang faceplates to be mounted to Walker in-floor boxes. Part No. AF3 Two adapter plates will fit into one Walker box.	1	10
-------	---	---	----

ORDERING INFORMATION:

Order number of pieces required, in multiples of Standard Package Quantity.

- Accepts single gang designer or executive faceplates. See [page B3](#) and [page B9](#).
- Up to six connector modules per faceplate

Tombstone (Floor Box) Adapter Plate



Part Number	Description	Std. Pkg. Qty.	Std. Ctn. Qty.
-------------	-------------	----------------	----------------

Tombstone Adapter Plate

MSP500W	Allows <b>MINI-COM</b> Snap-In Modular Furniture Faceplates to be mounted to Walker floor box service fitting Part No. 500 (Tombstone).	1	10
---------	---	---	----

ORDERING INFORMATION:

Order number of pieces required, in multiples of Standard Package Quantity.

- Accepts snap-on modular furniture faceplates  
See [page B20](#).
- Up to four connector modules per faceplate

### MINI-COM® Snap-On Modular Furniture Faceplate

The **MINI-COM** Snap-On Faceplate snaps directly into "industry standard" communications openings on most modular office furniture. The faceplate is the highest density in the industry (four module spaces) and features an aesthetically pleasing design and smooth finish that blend in with the furniture.

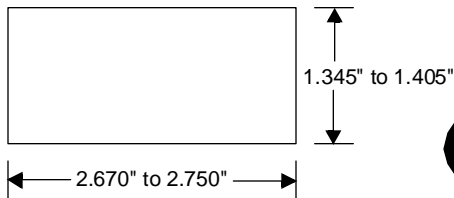


Modular furniture must be flexible to meet the demands of today's efficient open office. Use **MINI-COM** Snap-on Faceplates to ensure that your network cabling system is just as flexible.



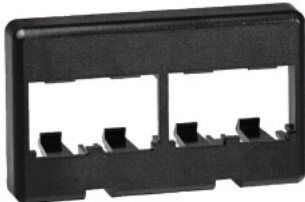
Faceplate snaps into "industry standard" opening with panel cutout specified below. Consult factory for specific furniture manufacturer's opening sizes or solutions for other opening sizes.

Panel Cutout Requirements



Maximum Panel Thickness: .090"

CFFP4



Note: Modules sold separately. For use with **MINI-COM** Modules only.



- 11 decorator colors to complement any decor



- High density design; accepts up to 4 snap-in **MINI-COM** modules

- Accepts **MINI-COM** Modules for UTP (including Category 5), Fiber Optic and Coax cables

Modules - See page B29  
Labels - See page Q23, Q25

Part Number	Description	Color	Std. Pkg. Qty.	Std. Ctn. Qty.
<b>4 Module Space Modular Furniture Snap-On Faceplate</b>				
CFFP4IW	Faceplate snaps into knockouts found on modular furniture. Holds four standard connector modules.  Depth to rear of modules: .972" (24.7mm)	Off White	1	10
CFFP4EI		Elec. Ivory	1	10
CFFP4IG		Light Gray	1	10
CFFP4WH		White	1	10
CFFP4BL		Black	1	10

Part Number	Description	Color	Std. Pkg. Qty.	Std. Ctn. Qty.
<b>2 Module Space Angled Modular Furniture Snap-On Faceplate</b>				
CFFPA2IW	Faceplate snaps into knockouts found on modular furniture. Holds two standard connector modules.  Depth to rear of modules: .600" (15.2mm)	Off White	1	10
CFFPA2EI		Elec. Ivory	1	10
CFFPA2IG		Light Gray	1	10
CFFPA2WH		White	1	10
CFFPA2BL		Black	1	10

**ORDERING INFORMATION:**

Order number of pieces required, in multiples of Standard Package Quantity.

SNAP IN FACEPLATES

MFFPE

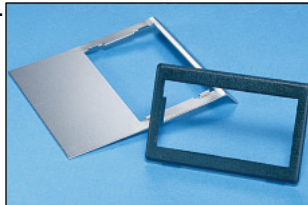


Part Number	Description	Color	Std. Pkg. Qty.	Std. Ctn. Qty.
<b>Snap-On Modular Furniture Faceplate Extender</b>				
MFFPEIW	For use when depth inside modular furniture base is limited. Extends plate approximately 1/2". Accepts all Panduit modular faceplates. Fits into same breakout size as CFFP faceplate found on <a href="#">page B20</a> .	Off White	1	10
MFFPEEI		Elec. Ivory	1	10
MFFPEIG		Light Gray	1	10
MFFPEWH		White	1	10
MFFPEBL		Black	1	10

**ORDERING INFORMATION:**  
Order number of pieces required, in multiples of Standard Package Quantity.

**Herman Miller Adapter**

MFFPHMBL



Part Number	Description	Color	Std. Pkg. Qty.	Std. Ctn. Qty.
<b>Punch Die</b>				
MFFPHMBL	Adapter to use <b>MINI-COM</b> CFFP snap-on faceplates with Herman Miller modular furniture. Converts a 3" x 1.875" opening into a 2.688" x 1.375" (68.58mm x 35.05mm) opening.	Black	1	10

• For use with Herman Miller modular furniture with 3" x 1.875" opening

**ORDERING INFORMATION:**  
Order number of pieces required, in multiples of Standard Package Quantity.

**Punch Die**

MFFD



Part Number	Description	Std. Pkg. Qty.
<b>Punch Die</b>		
MFFD	Punch Die cuts a rectangular hole in base of modular furniture to accept <b>MINI-COM</b> CFFP snap-on faceplates found on <a href="#">page B20</a> .	1

• For use with plastic or metal furniture. Requires hydraulic driver such as a GreenLee #7804SB.

**ORDERING INFORMATION:**  
Order number of pieces required, in multiples of Standard Package Quantity.

ACCESSORIES



## MINI-COM® Modular Furniture Cabling Solutions

Choose from a wide variety of **MINI-COM** Outlet Products used in modular furniture cabling applications. Many of these products provide bend radius and exit protection for both copper and fiber cables. The following are examples of these products used in a wide array of open office environments. Options vary by modular furniture system design. Contact factory or consult your modular furniture manufacturer for more information.



The gradual bend radius provided by this four module space single gang sloped faceplate (See [page B3](#)) is excellent for vertical applications above the desktop of modular furniture. Single gang opening required.



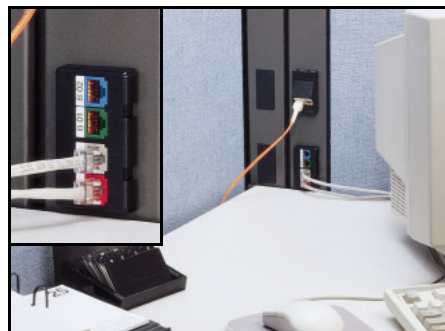
The high density of this four module space snap-on modular furniture faceplate (See [page B20](#)) is recommended for cable intensive modular furniture installations. TIA/EIA standard opening required.



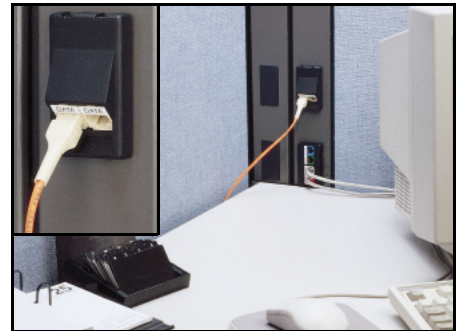
The gradual bend radius provided by this two module space angled snap-on modular furniture faceplate (See [page B20](#)) is excellent for horizontal applications at the base of modular furniture. TIA/EIA standard opening required.



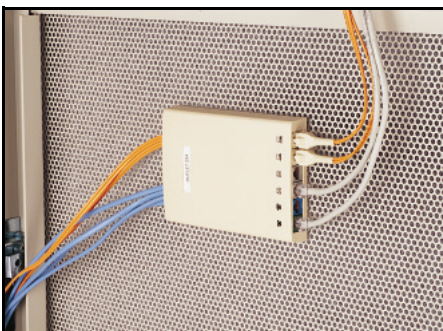
The sleek look and parallel cable exit of this surface mount box (See [page B25](#)) blends in and provides cable protection. This solution is ideal for horizontal applications at the base of modular furniture.



The high density of this four module space snap-in modular furniture faceplate (See [page B20](#)) is recommended for cable intensive modular furniture installations. TIA/EIA standard opening required.



The gradual bend radius provided by this two module space angled snap-on modular furniture faceplate (See [page B20](#)) is excellent for vertical applications above the desktop of TIA/EIA standard opening required.



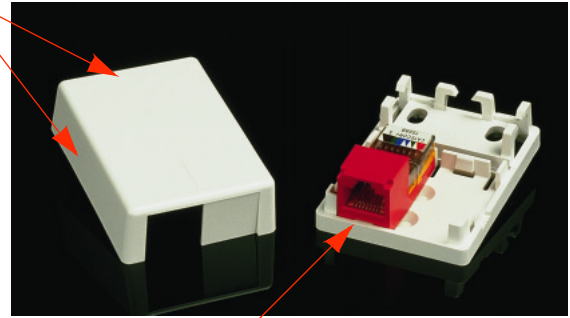
The high density, low profile design of this multimedia outlet (see [page B28](#)) is ideal for copper and fiber terminations inside modular furniture panels.

MODULAR FURNITURE CABLING SOLUTIONS

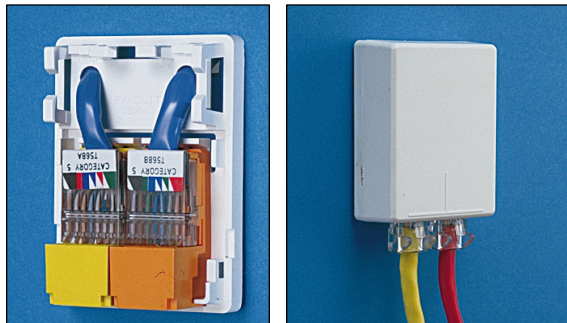
# MINI-COM® Surface Mount Boxes

**MINI-COM** One/Two Module Space Surface Mount Box is the smallest, lowest profile outlet of its kind. It accepts one or two **MINI-COM** Modules. This innovative box includes a blank molded directly into the cover. To add a second module simply break out the blank. The versatile box can be wall mounted with screws or adhesive or mounted to metal desks or file cabinets with an optional magnet. The **MINI-COM** Surface Mount Box is excellent for voice and data applications.

- Cable entry from side and rear knockouts and from opening in base
- Surface box labels see [page Q27](#) to [page Q28](#).
- 5 decorator colors to complement any decor
- **Extremely low profile design:**  
.91"H (23.1mm) x 1.77"W (45mm) x 2.44"L (62mm)



- Accepts **MINI-COM** Modules for UTP (including Category 5), Fiber Optic and Coax cables.
- Mounts easily with screws, adhesive tape or magnet



Simply snap a terminated **MINI-COM** Module into the base, snap on the cover and plug in the cables! Now you have a compact, attractive and versatile workstation outlet. To add a second module, simply break out the pre-molded blank and snap in an additional module.

All boxes supplied with base and snap-on cover.

Modules - See [page B29](#)  
Raceway - See [page H15](#)  
Labels - See [page Q23](#), [Q27-Q28](#)



CBXJ2

Part Number	Description	Color	Can Be Used With PAN-WAY™ Raceway*	Std. Pkg. Qty.	Std. Ctn. Qty.
<b>2 Module Space Surface Mount Box</b>					
CBXJ2IW-A	Surface mount box holds up to two <b>MINI-COM</b> Connector Modules. Supplied with adhesive backing.	Off White	LDP5, LD5, CD5	1	10
CBXJ2EI-A		Elec. Ivory		1	10
CBXJ2IG-A		Light Gray		1	10
CBXJ2WH-A		White		1	10
CBXJ2BL-A		Black		1	10

Note: Modules sold separately. For use with **MINI-COM** Modules only.

**ORDERING INFORMATION:**  
Order number of pieces required, in multiples of Standard Package Quantity.  
\*Note: Raceway listed above can be mounted flush with 2 module space box, however, **CBX2** on [page B24](#) is recommended for use with Panduit **PAN-WAY** Raceway for in-box installation. Optional Magnet available, see [page B26](#).



Versatile box mounts on furniture...



Can be used for raceway applications...

SURFACE MOUNT BOXES



### **NEW** MINI-COM® Surface Mount Boxes

One/Two Module Space Surface Mount Box is low profile and includes a blank molded directly into the cover. To add a second module simply break out the blank. Use with Panduit **PAN-WAY™** LD3, LD5, CD3 or CD5 raceway. Raceway goes **directly into the box**, enhancing the professional look of your application. Box can be wall mounted with screws or adhesive or mounted to metal desks of file cabinets with an optional magnet. Excellent for voice and data applications.

- Cable entry accessed from both sides and rear knockouts and from opening in base

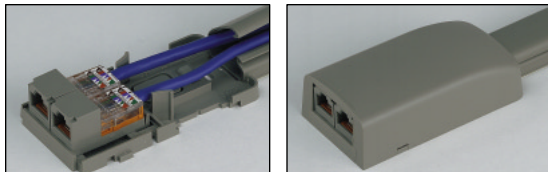
- Surface box labels see **page Q27-page Q28**.

- Surface box dimensions: 1.06"H (27mm) X 1.95"W (50mm) X 3.65"L (93mm)



- 5 decorator colors to complement any decor

- Accepts **MINI-COM** Modules for UTP (including **Category 5**), Fiber Optic cables and Coax cables.



Simply run raceway into base and break out cover knockout. Route cable and terminate **MINI-COM** Module(s) and snap into place.

Modules - See **page B29**  
 Raceway - See **page H11**  
 Labels - See **page Q23, Q27-Q28**

CBX2

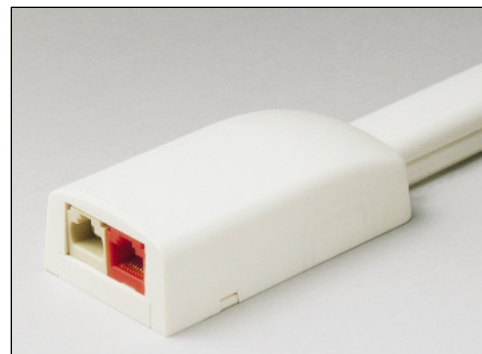


Part Number	Description	Color	Can Be Used With PAN-WAY™ Raceway*	Std. Pkg. Qty.	Std. Ctn. Qty.
<b>2 Module Space Surface Mount Box</b>					
CBX2IW-A	Surface mount box holds up to two <b>MINI-COM</b> Connector Modules. Supplied with adhesive backing.	Off White	LDP3, LD3, CD3, LDP5, LD5, CD5	1	10
CBX2EI-A		Elec. Ivory		1	10
CBX2IG-A		Light Gray		1	10
CBX2WH-A		White		1	10
CBX2BL-A		Black		1	10

**ORDERING INFORMATION:**  
 Order number of pieces required, in multiples of Standard Package Quantity.  
 Optional Magnet available, see **page B26**.



Versatile box mounts on furniture...



Perfect for surface raceway applications...

SURFACE MOUNT BOXES

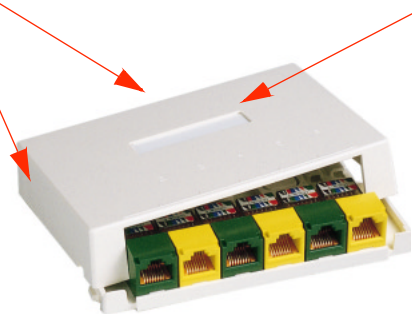


# MINI-COM® Surface Mount Boxes

**MINI-COM** four, six and twelve module space Surface Mount Boxes feature a low profile design. They provide an excellent solution for high density applications and allow for optimum flexibility at the workstation outlet. These boxes can be wall mounted with screws or adhesive or mounted to metal desks or file cabinets with an optional magnet. **MINI-COM** Surface Mount Boxes can also be used with **PAN-WAY™** Raceway for surface mount applications.

- Cable entry from side and rear knockouts and from opening in bottom of base
- Surface box labels see [page Q27](#) to [page Q28](#)
- Surface box screw covers can be used in place of clear label holders (ordered separately, see [page B8](#))

• Extremely low profile design



- Combination label holder/screw cover for custom identification
- Tamper resistant screw for added security
- Mounts easily with screws, adhesive tape or magnet
- 5 decorator colors to complement any decor

• Accepts **MINI-COM** Modules for UTP (including Category 5), Coax cables and **OPTI-JACK™** Fiber Connector Modules found on [page E4](#).

Note: Modules sold separately.  
For use with **MINI-COM** Modules only.

Modules - See [page B29](#)  
Raceway - See [page H11](#)  
Labels - See [page Q23, Q27-Q28](#)

**CBX4**



- Provides slots that accept cable ties for strain relief. See [page R1](#) for cable tie part numbers.
- Provides bend radius control
- 4 Module Box -  
1.1"H (28mm) x 2.9"W (74mm) x 4.5"L (114mm)

Part Number	Description	Color	Can Be Used With <b>PAN-WAY™</b> Raceway*	Std. Pkg. Qty	Std. Ctn. Qty.
<b>4 Module Space Surface Mount Box</b>					
<b>CBX4IW-A</b>	Surface mount box holds up to four	Off White	LD3, CD3, LD5, CD5	1	10
<b>CBX4EI-A</b>	<b>MINI-COM</b> Connector Modules.	Elec. Ivory		1	10
<b>CBX4IG-A</b>	Supplied with mounting screws,	Light Gray		1	10
<b>CBX4WH-A</b>	adhesive backing and label holder/	White		1	10
<b>CBX4BL-A</b>	screw cover.	Black		1	10

**CBX6**

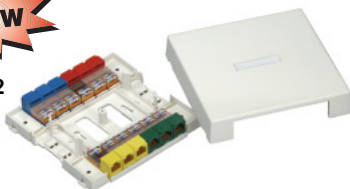


- Provides slots that accept cable ties for strain relief
- 6 Module Box -  
.91"H (23mm) x 4.91"W (125mm) x 3.25"L (83mm)

<b>6 Module Space Surface Mount Box</b>					
<b>CBX6IW-A</b>	Surface mount box holds up to six	Off White	LD3, CD3, LD5, CD5	1	10
<b>CBX6EI-A</b>	<b>MINI-COM</b> Connector Modules.	Elec. Ivory		1	10
<b>CBX6IG-A</b>	Supplied with mounting screws,	Light Gray		1	10
<b>CBX6WH-A</b>	adhesive backing and label holder/	White		1	10
<b>CBX6BL-A</b>	screw cover.	Black		1	10



**CBX12**



- 12 Module Box -  
1.035"H (26mm) x 5.71"W (145mm) x 5.45"L (138mm)

<b>12 Module Space Surface Mount Box</b>					
<b>CBX12IW-A</b>	Surface mount box holds up to twelve	Off White	LD5, CD5, LD10, CP10	1	10
<b>CBX12EI-A</b>	<b>MINI-COM</b> Connector Modules.	Elec. Ivory		1	10
<b>CBX12IG-A</b>	Supplied with mounting screws	Light Gray		1	10
<b>CBX12WH-A</b>	adhesive backing and label holder/	White		1	10
<b>CBX12BL-A</b>	screw cover.	Black		1	10

**ORDERING INFORMATION:**

Order number of pieces required, in multiples of Standard Package Quantity.

CBM-X



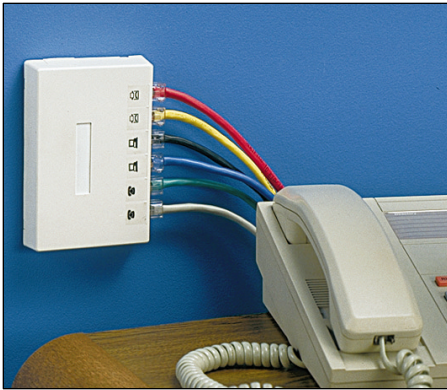
Part Number	Description	Std. Pkg. Qty	Std. Ctn. Qty.
-------------	-------------	---------------	----------------

**Optional Magnet**

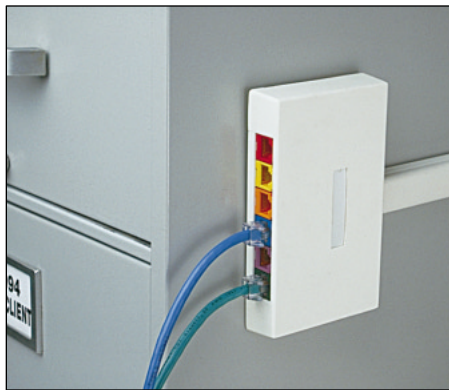
CBM-X	Optional magnets snap into box base for mounting to metal desks or file cabinets. (Two magnets per box recommended)	10	100
-------	---	----	-----

**ORDERING INFORMATION:**

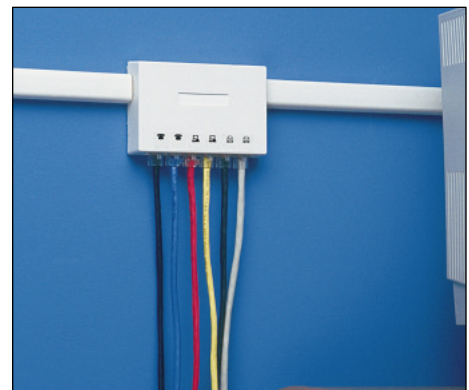
Order number of pieces required, in multiples of Standard Package Quantity. No adapters are required.



Mounts to a single gang opening to provide a high density in-wall solution...



Mounts easily to metal desks, modular furniture panels or cabinets with optional magnets...



Use with **PAN-WAY™** Raceway for surface mount applications...



Provides the highest density surface mount solution, designed to be compact and low profile

SURFACE MOUNT BOXES



## MINI-COM® Multi-Media/Fiber Surface Mount Boxes

**MINI-COM** 6 and 12 module space, low profile, Multi-Media/Fiber Boxes feature a built-in spool to store excess fiber as required in TIA-568A. They provide an excellent solution for high density applications and allow for optimum flexibility at the workstation outlet. These can be wall mounted over single gang, double gang and DIN sized openings with screws or adhesive. **MINI-COM** Multi-Media/Fiber Outlets can also be used with **PAN-WAY™** Raceway for surface mount applications.

Note: Modules sold separately.  
For use with **MINI-COM** Modules only.

- Multi-Media/Fiber Box dimensions:  
6 Module Outlet - .99"H (25mm) x 4.71"W (120mm) x 6.67"L (170mm)  
12 Module Outlet - 1.81"H (46mm) x 4.71"W (120mm) x 6.67"L (170mm)

- Accepts **MINI-COM** Modules for UTP (including Category 5), Fiber Optic cables, Coax cables and **OPTI-JACK™** Fiber Connector Modules found on [page E4](#).



- Cable entry from side and rear knockouts and from opening in bottom of base
- Surface box screw covers can be used in place of clear label holders (ordered separately, see [page B8](#))
- Slots accept cable ties for cable management
- Mounts easily with screws or adhesive tape
- Tamper resistant screw for added security
- 5 decorator colors to complement any decor
- Built-in fiber spool stores up to 78.8 feet (24 meters) of buffered fiber optic cable
- Unique fiber spool design secures cable in place
- Splicing capacity available

**Standards Tip: TIA/EIA-568A requires a minimum 1 meter slack and a fiber spool.**

Modules - See [page B29](#)  
Raceway - See [page H11](#)  
Labels - See [page Q23, Q27-Q28](#)



The low profile design is ideal for fiber optic as well as all multi-media applications. The built in fiber spool maintains the recommended minimum bend radius for fiber optic and Category 5 cables.



When additional capacity is required, the box can be easily upgraded with the Fiber Outlet Kit. The bridge snaps on to the existing outlet base to create twelve total ports doubling the capacity. Ideal for the telecommunications closet or workstation outlet.



The cover snaps on and is secured with a tamper resistant screw. The **MINI-COM** Multi-Media/Fiber Outlet provides an aesthetically pleasing outlet that can be used for in-wall or surface cabling applications.

SURFACE MOUNT BOXES



# MINI-COM® Multi-Media/Fiber Surface Mount Boxes

CBXF6



Part Number	Description	Color	Can Be Used With PAN-WAY™ Raceway	Std. Pkg. Qty	Std. Ctn. Qty.
-------------	-------------	-------	-----------------------------------	---------------	----------------

### 6 Module Space Multi-Media/Fiber Boxes

CBXF6IW-A	Surface mount box holds up to six <b>MINI-COM</b> Connector Modules or six <b>OPTI-JACK™</b> Fiber Connector Modules. Supplied with mounting screws and adhesive backing.	Off White	LD3, CD3, LD5, CD5	1	10
CBXF6EI-A		Elec. Ivory		1	10
CBXF6IG-A		Light Gray		1	10
CBXF6WH-A		White		1	10
CBXF6BL-A		Black		1	10

CBXF12



### 12 Module Space Multi-Media/Fiber Boxes

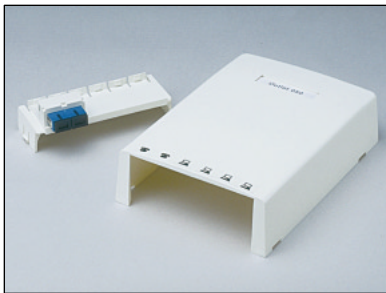
CBXF12IW-A	Surface mount box holds up to twelve <b>MINI-COM</b> Connector Modules or twelve <b>OPTI-JACK™</b> Fiber Connector Modules. Supplied with mounting screws and adhesive backing.	Off White	LD3, CD3, LD5, CD5, LD10, CD10	1	10
CBXF12EI-A		Elec. Ivory		1	10
CBXF12IG-A		Light Gray		1	10
CBXF12WH-A		White		1	10
CBXF12BL-A		Black		1	10

**ORDERING INFORMATION:**

Order number of pieces required, in multiples of Standard Package Quantity.

SURFACE MOUNT BOXES

## Fiber Box Expander



- Upgrades CBXF6 to accept twelve connector modules

## Fiber Outlet Kit

CBXF6KITIW	Includes bridge, deep cover and tamper resistant screw.	Off White	LD3, CD3, LD5, CD5, LD10, CD10	1	10
CBXF6KITEI		Elec. Ivory		1	10
CBXF6KITIG		Light Gray		1	10
CBXF6KITWH		White		1	10
CBXF6KITBL		Black		1	10

**ORDERING INFORMATION:**

Order number of pieces required, in multiples of Standard Package Quantity.



Bridge snaps easily on to existing base.



Capacity doubles to twelve ports.

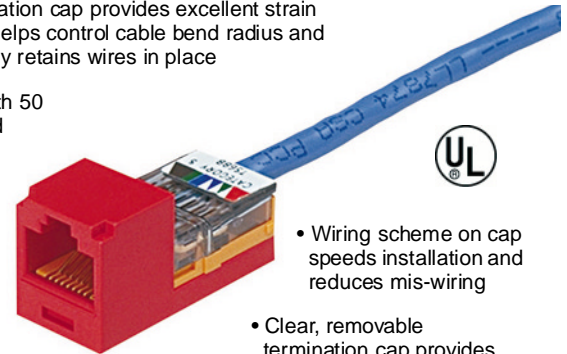


# MINI-JACK™ Category 5 Modular Jacks

New **MINI-JACK** Modular Jacks feature state-of-the-art **lead frame** construction and insulation displacement contacts to ensure the highest quality, highest reliability connections available. There is no printed circuit board with wave soldered connections to create potential quality problems. The U.L. verified Category 5 jacks are designed to deliver the maximum performance in an installed Category 5 channel. The patented design ensures each jack is terminated per Category 5 installation guidelines, the first time and every time.

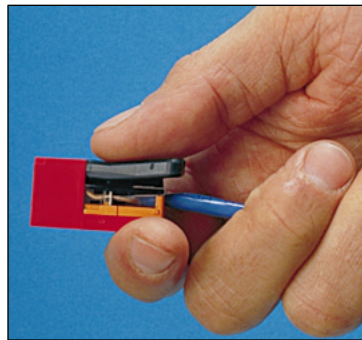
- Termination cap provides excellent strain relief, helps control cable bend radius and securely retains wires in place

- Contacts plated with 50 microinches of gold (0.013)
- Exceeds requirements in POWERSUM NEXT TIA/EIA 568-A test procedures



- Wiring scheme on cap speeds installation and reduces mis-wiring
- Clear, removable termination cap provides easy troubleshooting

- Patented termination style ensures **twists are maintained to within 1/2" (12.7)**. Per Category 5 installation requirements)



**Category 5 terminations are a snap with the MINI-JACK Snap Tool!** Use it with all **MINI-JACK** Modular Jacks.

**Part Number: CJT-X** (shown at left). See **page B30**

- Module labels see **page Q23**



- **MINI-JACK** Modules are available in 11 standard colors for easy color coding or to complement any decor

- Provides U.L. Verified Category 5 performance (File No. E1298860)
- Can be re-terminated a minimum of 10 times
- Terminates 24 AWG solid unshielded twisted pair to a modular jack (For 22 AWG applications, call Technical Assistance - number shown below)
- IDC contact design eliminates need to strip individual conductors
- Universal (accepts 2, 3 or 4 pair modular plugs without damage)
- Orange jack base designates Category 5

CJ588



CJ588A



Note: Same modules snap in and out of all **MINI-COM** Faceplates, Boxes and Modular Patch Panels.

Part Number	Description	No. of Module Spaces	Color	Std. Pkg. Qty.	Std. Ctn. Qty.
-------------	-------------	----------------------	-------	----------------	----------------

### Universal 8 Position, 8 Wire T568A and T568B Coded (RJ45 Type)

CJ588IW	8 position, 8 wire universal modular jack. Termination cap is color coded for T568A and T568B wiring schemes.	1	Off White	1	50
CJ588EI		1	Elec. Ivory	1	50
CJ588IG		1	Light Gray	1	50
CJ588WH		1	White	1	50
CJ588BL		1	Black	1	50
CJ588OR		1	Orange	1	50
CJ588RD		1	Red	1	50
CJ588BU		1	Blue	1	50
CJ588GR		1	Green	1	50
CJ588YL		1	Yellow	1	50
CJ588VL		1	Violet	1	50

### Universal 8 Position, 8 Wire T568A Coded (RJ45 Type)

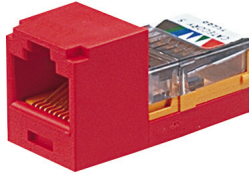
CJ588AIW	8 position, 8 wire universal modular jack. Termination cap is color coded for T568A wiring scheme.	1	Off White	1	50
CJ588AEI		1	Elec. Ivory	1	50
CJ588AIG		1	Light Gray	1	50
CJ588AWH		1	White	1	50
CJ588ABL		1	Black	1	50
CJ588AOR		1	Orange	1	50
CJ588ARD		1	Red	1	50
CJ588ABU		1	Blue	1	50
CJ588AGR		1	Green	1	50
CJ588AYL		1	Yellow	1	50
CJ588AVL		1	Violet	1	50

### ORDERING INFORMATION:

Order number of pieces required, in multiples of Standard Package Quantity.

### MINI-JACK™ Category 5 Modular Jacks

CJ588B



Part Number	Description	No. of Module Spaces	Color	Std. Pkg. Qty.	Std. Ctn. Qty.
<b>Universal 8 Position, 8 Wire T568B Coded (RJ45 Type)</b>					
CJ588BIW	8 position, 8 wire universal modular jack. Termination cap is color coded for T568B wiring scheme.	1	Off White	1	50
CJ588BEI		1	Elec. Ivory	1	50
CJ588BIG		1	Light Gray	1	50
CJ588BWH		1	White	1	50
CJ588BBL		1	Black	1	50
CJ588BOR		1	Orange	1	50
CJ588BRD		1	Red	1	50
CJ588BBU		1	Blue	1	50
CJ588BGR		1	Green	1	50
CJ588BYL		1	Yellow	1	50
CJ588BVL		1	Violet	1	50

CJ588K



<b>Universal 8 Position, 8 Wire Keyed T568A and T568B Coded (RJ45 Type)</b>					
CJ588KIW	8 position, 8 wire universal modular jack, keyed for data. Termination cap is color coded for T568A and T568B wiring schemes.	1	Off White	1	50
CJ588KEI		1	Elec. Ivory	1	50
CJ588KIG		1	Light Gray	1	50
CJ588KWH		1	White	1	50
CJ588KBL		1	Black	1	50
CJ588KOR		1	Orange	1	50
CJ588KRD		1	Red	1	50
CJ588KBU		1	Blue	1	50
CJ588KGR		1	Green	1	50
CJ588KYL		1	Yellow	1	50
CJ588KVL		1	Violet	1	50

CJ588KA



<b>Universal 8 Position, 8 Wire Keyed T568A Coded (RJ45 Type)</b>					
CJ588KAIW	8 position, 8 wire universal modular jack keyed for data. Termination cap is color coded for T568A wiring scheme.	1	Off White	1	50
CJ588KAEI		1	Elec. Ivory	1	50
CJ588KAIG		1	Light Gray	1	50
CJ588KAWH		1	White	1	50
CJ588KABL		1	Black	1	50
CJ588KAOR		1	Orange	1	50
CJ588KARD		1	Red	1	50
CJ588KABU		1	Blue	1	50
CJ588KAGR		1	Green	1	50
CJ588KAYL		1	Yellow	1	50
CJ588KAVL		1	Violet	1	50

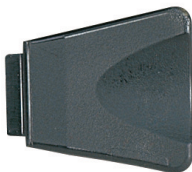
CJ588KB



<b>Universal 8 Position, 8 Wire Keyed T568B Coded (RJ45 Type)</b>					
CJ588KBIW	8 position, 8 wire universal modular jack keyed for data. Termination cap is color coded for T568B wiring scheme.	1	Off White	1	50
CJ588KBEI		1	Elec. Ivory	1	50
CJ588KBIG		1	Light Gray	1	50
CJ588KBWH		1	White	1	50
CJ588KBBL		1	Black	1	50
CJ588KBOR		1	Orange	1	50
CJ588KBRD		1	Red	1	50
CJ588KBBU		1	Blue	1	50
CJ588KBGR		1	Green	1	50
CJ588KBYL		1	Yellow	1	50
CJ588KBVL		1	Violet	1	50

Note: Same modules snap in and out of all **MINI-COM** Faceplates, Boxes and Modular Patch Panels.

#### Snap Tool



- Facilitates easiest installation
- Eliminates need for slip lock pliers
- Insures conductors are fully terminated

Part Number	Description	Std. Pkg. Qty.	Std. Ctn. Qty.
-------------	-------------	----------------	----------------

#### Termination "Snap Tool"

CJT-X	Terminates all <b>MINI-JACK</b> and <b>PAN-JACK™</b> Category 5 and Category 3 Modular Jacks.	10	50
-------	---	----	----

#### ORDERING INFORMATION:

Order number of pieces required, in multiples of Standard Package Quantity.

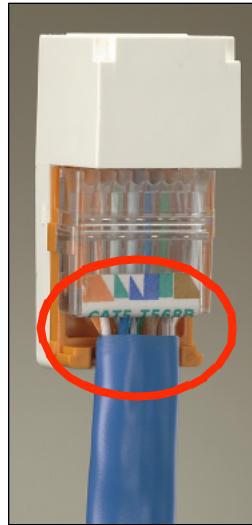




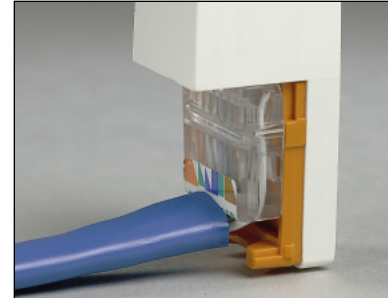
**MINI-JACK™ Category 5 Modular Jack with Micro-Cap**

NEW **MINI-JACK** Category 5 Jack features the same state-of-the-art lead frame construction and ease of termination as our **MINI-JACK** Category 5 Jacks, but with a cap designed to accommodate unique size (i.e. crescent shaped) cable. It also easily installs into very shallow installation spaces because the cable can exit the jack at a right angle.

These U.L. verified Category 5 Jacks are designed to deliver the maximum performance in an installed Category 5 channel. The patented design ensures each jack is terminated per Category 5 installation guidelines, the first time, every time.

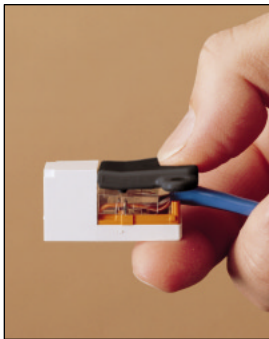


Accommodates large and/or unique O.D. Cable



Right angle exit in shallow installation spaces

CATEGORY 5 MODULAR JACKS



Category 5 terminations are a snap with the **MINI-JACK Snap Tool!** Use it with all **MINI-JACK** Modular Jacks.

Part Number: **CJT-X** (shown at left). See page **B30**.

- Provides U.L. Verified Category 5 performance (File No. E1298860)
- Can be re-terminated a minimum of 10 times
- Terminates 24 AWG solid unshielded twisted pair to a modular jack
- IDC contact design eliminates need to strip individual conductors
- Universal (accepts 2, 3 or 4 pair modular plugs without damage)
- Orange jack base designates Category 5

Part Number	Description	No. of Module Spaces	Color	Std. Pkg. Qty.	Std. Ctn. Qty.
<b>Universal 8 Position, 8 Wire T568A Coded (RJ45 Type)</b>					
<b>CJ588SAIW</b>	8 position, 8 wire universal modular jack. Termination cap is color coded for T568A wiring schemes.	1	Off White	1	50
<b>CJ588SAEI</b>	Cap designed for large and/or unique shaped cables and for shallow installation spaces.	1	Elec. Ivory	1	50
<b>CJ588SAIG</b>		1	Light Gray	1	50
<b>CJ588SAWH</b>		1	White	1	50
<b>CJ588SABL</b>		1	Black	1	50
<b>CJ588SAOR</b>		1	Orange	1	50
<b>CJ588SARD</b>		1	Red	1	50
<b>CJ588SABU</b>		1	Blue	1	50
<b>CJ588SAGR</b>		1	Green	1	50
<b>CJ588SAYL</b>		1	Yellow	1	50
<b>CJ588SAVL</b>		1	Violet	1	50

<b>Universal 8 Position, 8 Wire T568B Coded (RJ45 Type)</b>					
<b>CJ588SBIW</b>	8 position, 8 wire universal modular jack. Termination cap is color coded for T568B wiring schemes.	1	Off White	1	50
<b>CJ588SBEI</b>	Cap designed for large and/or unique shaped cables and for shallow installation spaces.	1	Elec. Ivory	1	50
<b>CJ588SBIG</b>		1	Light Gray	1	50
<b>CJ588SBWH</b>		1	White	1	50
<b>CJ588SBBL</b>		1	Black	1	50
<b>CJ588SBOR</b>		1	Orange	1	50
<b>CJ588SBRD</b>		1	Red	1	50
<b>CJ588SBBU</b>		1	Blue	1	50
<b>CJ588SBGR</b>		1	Green	1	50
<b>CJ588SBYL</b>		1	Yellow	1	50
<b>CJ588SBVL</b>		1	Violet	1	50

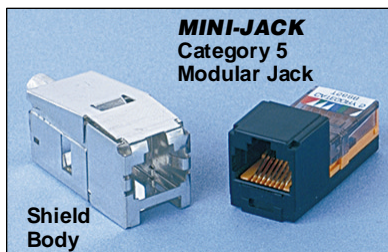
**ORDERING INFORMATION:**

Order number of pieces required, in multiples of Standard Package Quantity.



### MINI-JACK™ Category 5 Shielded Modular Jacks

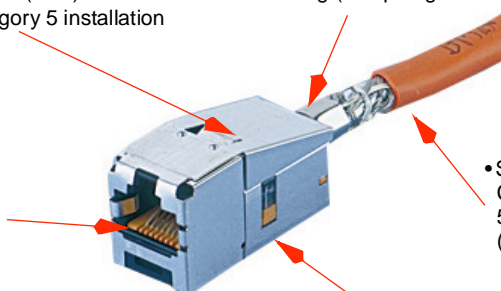
**MINI-JACK** Category 5 Shielded Modular Jacks terminate 100 Ohm screened twisted pair and shielded twisted pair communication system from the harmful effects of Electromagnetic Interference (EMI). Disruptive levels of EMI, which are caused by radiation of electrical or magnetic fields, are commonly present around power cables, heavy machinery, etc.



- Patented design ensures twists are maintained to within 1/2" (12.7) as required per TIA Category 5 installation guidelines

- Jack shield is crimped to cable shield to provide bonding (crimp ring included)

- Contacts plated with 50 microinches of gold (0.013)



- Screened Category 5 Cable (ScTP)

- IDC contacts for quick, easy termination

- Metallic shield provides EMI protection

Shielded cable: Each individual twisted pair is encased by a metallic layer (foil or braid).  
 Screened cable: All twisted pairs are encased together by a metallic layer (foil or braid).

For 24 or 22 AWG ScTP, STP\*

CJS588

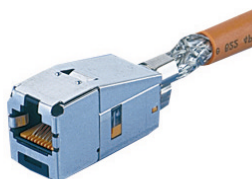


- Terminates 24 or 22 AWG solid 100 Ohm screened twisted pair and shielded twisted pair (consult factory for 22 AWG). Max. insulated conductor O.D. is .048" (1.22)
- Max. cable O.D. .34" (8.64)
- Complies with EN 55022 radiated emissions limit. (European conducted and radiated emissions standard)

Part Number	Description	No. of Module Spaces	Std. Pkg. Qty.	Std. Ctn. Qty.
<b>Universal 8 Position, 8 Wire T568A and T568B Coded (RJ45 Type)</b>				
CJS588	8 position, 8 wire universal modular jack, shield and crimp ring. Termination cap is color coded for T568A and T568B wiring schemes.	1	1	50
<b>Universal 8 Position, 8 Wire T568A Coded (RJ45 Type)</b>				
CJS588A	8 position, 8 wire universal modular jack, shield and crimp ring. Termination cap is color coded for T568A wiring scheme.	1	1	50
<b>Universal 8 Position, 8 Wire T568B Coded (RJ45 Type)</b>				
CJS588B	8 position, 8 wire universal modular jack, shield and crimp ring. Termination cap is color coded for T568B wiring scheme.	1	1	50

For 22 AWG ScTP, STP\*

CJS58822



- Terminates 22 AWG solid 100 Ohm screened twisted pair and shielded twisted pair. Max. insulated conductor O.D. is .060" (1.52)
- Max. cable O.D. .4" (10.1)

Note: Same modules snap in and out of all **MINI-COM** Faceplates, Boxes and Modular Patch Panels.

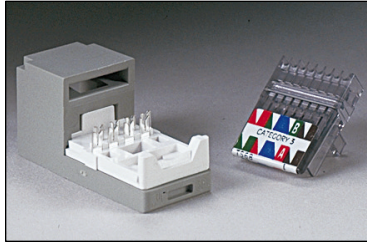
<b>Universal 8 Position, 8 Wire T568A and T568B Coded (RJ45 Type)</b>				
CJS58822	8 position, 8 wire universal modular jack, shield and crimp ring. Termination cap is color coded for T568A and T568B wiring schemes.	1	1	50
<b>Universal 8 Position, 8 Wire T568A Coded (RJ45 Type)</b>				
CJS58822A	8 position, 8 wire universal modular jack, shield and crimp ring. Termination cap is color coded for T568A wiring scheme.	1	1	50
<b>Universal 8 Position, 8 Wire T568B Coded (RJ45 Type)</b>				
CJS58822B	8 position, 8 wire universal modular jack, shield and crimp ring. Termination cap is color coded for T568B wiring scheme.	1	1	50
<b>Optional Insulating Label - For Shielded Modular Jacks</b>				
CJSGL-L	Insulates adjacent jacks from each other when applied to alternate jacks. Allows isolated ground on each jack.		50	—

**ORDERING INFORMATION:**

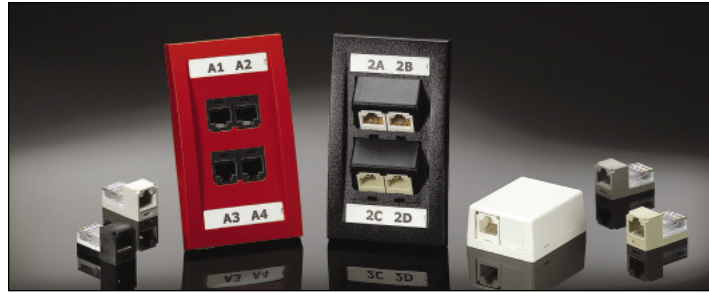
Order number of pieces required, in multiples of Standard Package Quantity.

Note: The B33BT1 crimp tool with the B33DS2 die set are recommended to crimp the shield ring on all **MINI-JACK** Shielded Modular Jacks. (see page C6).

# MINI-JACK™ Category 3 Modular Jacks



- Provides Category 3 performance
- Can be re-terminated a minimum of 10 times
- Terminates 24 AWG solid unshielded twisted pair to a modular jack (For 22 AWG applications, call Technical Assistance - number shown below)
- IDC contact design eliminates need to strip individual conductors
- White jack base designates Category 3



• **MINI-JACK** Category 3 Modular Jacks are available in 5 standard colors for easy color coding or to complement any interior decor.

CJ88



CJ88A



CJ88B



CJ88K



CJ88KA



CJ88KB



Part Number	Description	No. of Module Spaces	Color	Std. Pkg. Qty.	Std. Ctn. Qty.
<b>Universal 8 Position, 8 Wire T568A and T568B Coded (RJ45 Type)</b>					
CJ88IW	8 position, 8 wire universal modular jack. Termination cap is color coded	1	Off White	1	50
CJ88EI	8 position, 8 wire universal modular jack. Termination cap is color coded for T568A and T568B wiring schemes.	1	Elec. Ivory	1	50
CJ88IG		1	Light Gray	1	50
CJ88WH		1	White	1	50
CJ88BL		1	Black	1	50

### Universal 8 Position, 8 Wire T568A Coded (RJ45 Type)

CJ88AIW	8 position, 8 wire universal modular jack. Termination cap is color coded for T568A wiring scheme.	1	Off White	1	50
CJ88AEI		1	Elec. Ivory	1	50
CJ88AIG		1	Light Gray	1	50
CJ88AWH		1	White	1	50
CJ88ABL		1	Black	1	50

### Universal 8 Position, 8 Wire T568B Coded (RJ45 Type)

CJ88BIW	8 position, 8 wire universal modular jack. Termination cap is color coded for T568B wiring scheme.	1	Off White	1	50
CJ88BEI		1	Elec. Ivory	1	50
CJ88BIG		1	Light Gray	1	50
CJ88BWH		1	White	1	50
CJ88BBL		1	Black	1	50

### Universal 8 Position, 8 Wire Keyed T568A and T568B Coded (RJ45 Type)

CJ88KIW	8 position, 8 wire universal modular jack. Termination cap is color coded for T568A and T568B wiring schemes.	1	Off White	1	50
CJ88KEI		1	Elec. Ivory	1	50
CJ88KIG		1	Light Gray	1	50
CJ88KWH		1	White	1	50
CJ88KBL		1	Black	1	50

### Universal 8 Position, 8 Wire Keyed T568A Coded (RJ45 Type)

CJ88KAIW	8 position, 8 wire universal modular jack, keyed for data. Termination cap is color coded for T568A wiring scheme.	1	Off White	1	50
CJ88KAEI		1	Elec. Ivory	1	50
CJ88KAIG		1	Light Gray	1	50
CJ88KAWH		1	White	1	50
CJ88KABL		1	Black	1	50

### Universal 8 Position, 8 Wire Keyed T568B Coded (RJ45 Type)

CJ88KBIW	8 position, 8 wire universal modular jack, keyed for data. Termination cap is color coded for T568B wiring scheme.	1	Off White	1	50
CJ88KBEI		1	Elec. Ivory	1	50
CJ88KBIG		1	Light Gray	1	50
CJ88KBWH		1	White	1	50
CJ88KBBL		1	Black	1	50

Note: Same modules snap in and out of all **MINI-COM** Faceplates, Boxes and Modular Patch Panels.

#### ORDERING INFORMATION:

Order number of pieces required, in multiples of Standard Package Quantity.



### MINI-JACK™ Modular Jacks

CJ88U



Part Number	Description	No. of Module Spaces	Color	Std. Pkg. Qty.	Std. Ctn. Qty.
<b>8 Position, 8 Wire USOC Coded (RJ45 Type)</b>					
CJ88UIW	8 position, 8 wire modular jack.	1	Off White	1	50
CJ88UEI	Termination cap is color coded for USOC wiring scheme.	1	Elec. Ivory	1	50
CJ88UIG		1	Light Gray	1	50
CJ88UWH		1	White	1	50
CJ88UBL		1	Black	1	50

CJ66U



Part Number	Description	No. of Module Spaces	Color	Std. Pkg. Qty.	Std. Ctn. Qty.
<b>6 Position, 6 Wire USOC Coded (RJ11 Type)</b>					
CJ66UIW	6 position, 6 wire modular jack.	1	Off White	1	50
CJ66UEI	Termination cap is color coded for USOC wiring scheme.	1	Elec. Ivory	1	50
CJ66UIG		1	Light Gray	1	50
CJ66UWH		1	White	1	50
CJ66UBL		1	Black	1	50

CJ66



Part Number	Description	No. of Module Spaces	Color	Std. Pkg. Qty.	Std. Ctn. Qty.
<b>6 Position, 6 Wire (RJ11 Type)</b>					
CJ66IW	6 position, 6 wire modular jack.	1	Off White	1	50
CJ66EI		1	Elec. Ivory	1	50
CJ66IG		1	Light Gray	1	50
CJ66WH		1	White	1	50
CJ66BL		1	Black	1	50

CJ64



Part Number	Description	No. of Module Spaces	Color	Std. Pkg. Qty.	Std. Ctn. Qty.
<b>6 Position, 4 Wire (RJ11 Type)</b>					
CJ64IW	6 position, 4 wire modular jack.	1	Off White	1	50
CJ64EI		1	Elec. Ivory	1	50
CJ64IG		1	Light Gray	1	50
CJ64WH		1	White	1	50
CJ64BL		1	Black	1	50

Note: Same modules snap in and out of all **MINI-COM** Faceplates, Boxes and Modular Patch Panels.

#### Dust Cover



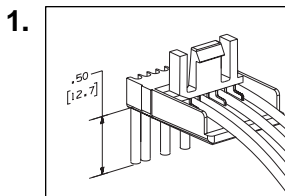
Part Number	Description	No. of Module Spaces	Color	Std. Pkg. Qty.	Std. Ctn. Qty.
<b>Dust Covers for MINI-JACK Modular Jacks</b>					
MDC-C	Dust cover snaps directly into front housing of all <b>MINI-JACK</b> Modular Jacks. Clear polycarbonate material can be used with all colors of modular jacks.		Clear	100	1000

• Keeps jack contacts clean when not in use.

#### ORDERING INFORMATION:

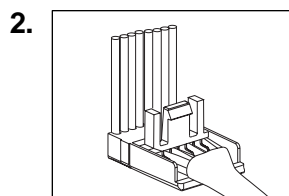
Order number of pieces required, in multiples of Standard Package Quantity.

#### MINI-JACK™ Termination Methods

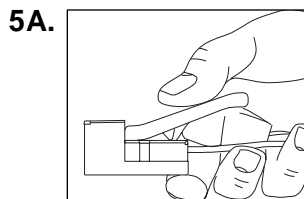


1. Straighten conductors, insert into cap and bend down to retain.

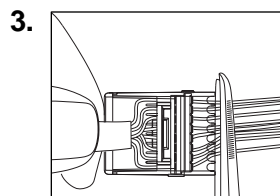
Complete the termination with CJT Termination Tool...



2. Pull conductors until outer jacket is inside cap and bend conductors up.

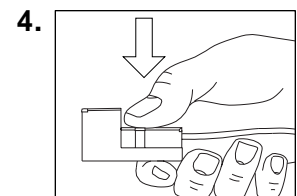


5A. CJT Tool terminates jack with a "click".

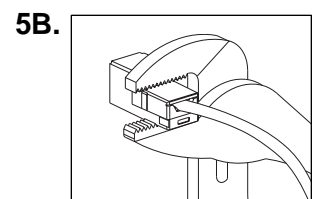


3. Trim conductors flush with cap.

Or complete the termination with slip lock pliers.



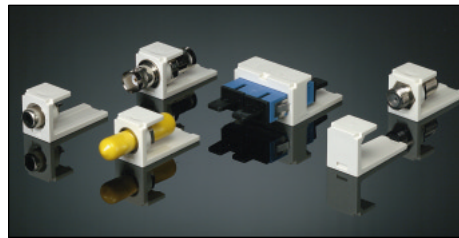
4. Push cap firmly onto housing.



5B. Squeeze pliers until cap "clicks".

## MINI-COM® Modules

**MINI-COM** Modules snap in and out of all **MINI-COM** Faceplates, Boxes and Modular Patch Panels for fast moves, adds and changes. Consult factory for nonstandard modules.



• **MINI-COM** Modules are available in 5 standard colors for easy color coding or to complement any decor.

### SC Duplex Fiber Optic Adapter Module

CMDSC



Part Number	Description	No. of Module Spaces	Color	Std. Pkg. Qty.	Std. Ctn. Qty.
-------------	-------------	----------------------	-------	----------------	----------------

#### MINI-COM SC Duplex Fiber Optic Adapter Module

CMDSCIW	Module supplied with one SC	2	Off White	1	10
CMDSCEI	multimode/single mode duplex	2	Elec. Ivory	1	10
CMDSCIG	fiber optic adapter with phosphor	2	Light Gray	1	10
CMDSCWH	coupler.	2	White	1	10
CMDSCBL		2	Black	1	10

### ST Fiber Optic Adapter Module

CMST



#### MINI-COM ST Fiber Optic Adapter Module

CMSTIW	Module supplied with one ST	1	Off White	1	10
CMSTEI	multimode/single mode fiber optic	1	Elec. Ivory	1	10
CMSTIG	adapter with phosphor bronze sleeve.	1	Light Gray	1	10
CMSTWH		1	White	1	10
CMSTBL		1	Black	1	10

### BNC Coax Coupler Module

CMBA



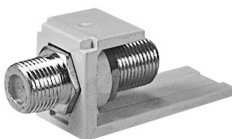
#### MINI-COM 50 Ohm BNC Coax Coupler Module

CMBAIW	Module supplied with industry	1	Off White	1	10
CMBAEI	standard 50 Ohm BNC bulkhead	1	Elec. Ivory	1	10
CMBAIG	coupler.	1	Light Gray	1	10
CMBAWH		1	White	1	10
CMBABL		1	Black	1	10

NOTE: Accepts BNC Plugs found on [page C6](#) to [page C7](#).

### F-Type Coupler Module

CMFBA



#### MINI-COM F-Type Coupler Module

CMFBAIW	Module supplied with industry	1	Off White	1	10
CMFBAEI	standard F-Type bulkhead coupler.	1	Elec. Ivory	1	10
CMFBAIG		1	Light Gray	1	10
CMFBAWH		1	White	1	10
CMFBABL		1	Black	1	10

#### ORDERING INFORMATION:

Order number of pieces required, in multiples of Standard Package Quantity.

Note: Same modules snap in and out of all **MINI-COM** Faceplates, Boxes and Modular Patch Panels.

### MINI-COM® Modules



#### RCA Connector Module

CMRCA



Part Number	Description	No. of Module Spaces	Color	Std. Pkg. Qty.	Std. Ctn. Qty.
-------------	-------------	----------------------	-------	----------------	----------------

#### MINI-COM RCA Connector Module — Black

CMRCAIW	Module supplied with one RCA connector with black insert. Solder type termination.	1	Off White	1	10
CMRCAEI		1	Elec. Ivory	1	10
CMRCAIG		1	Light Gray	1	10
CMRCAWH		1	White	1	10
CMRCABL		1	Black	1	10

CMRCAR



#### MINI-COM RCA Connector Module — Red

CMRCARIW	Module supplied with one RCA connector with red insert. Solder type termination.	1	Off White	1	10
CMRCAREI		1	Elec. Ivory	1	10
CMRCARIG		1	Light Gray	1	10
CMRCARWH		1	White	1	10
CMRCARBL		1	Black	1	10

CMRCAR available 2nd quarter, '98

CMRCAY



#### MINI-COM RCA Connector Module — Yellow

CMRCAYIW	Module supplied with one RCA connector with yellow insert. Solder type termination.	1	Off White	1	10
CMRCAYEI		1	Elec. Ivory	1	10
CMRCAYIG		1	Light Gray	1	10
CMRCAYWH		1	White	1	10
CMRCAYBL		1	Black	1	10

CMRCAY available 2nd quarter, '98

CMRCAW



#### MINI-COM RCA Connector Module — White

CMRCAWIW	Module supplied with one RCA connector with white insert. Solder type termination.	1	Off White	1	10
CMRCAWEI		1	Elec. Ivory	1	10
CMRCAWIG		1	Light Gray	1	10
CMRCAWWH		1	White	1	10
CMRCAWBL		1	Black	1	10

CMRCAW available 2nd quarter, '98

#### ORDERING INFORMATION:

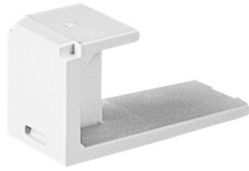
Order number of pieces required, in multiples of Standard Package Quantity.



# MINI-COM® Modules

## Blank Module

CMB



Note: Same modules snap in and out of all **MINI-COM** Faceplates, Boxes and Modular Patch Panels.

Part Number	Description	No. of Module Spaces	Color	Std. Pkg. Qty.	Std. Ctn. Qty.
-------------	-------------	----------------------	-------	----------------	----------------

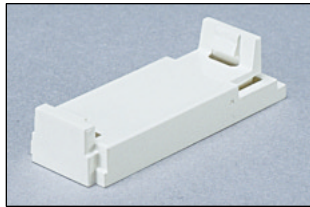
### MINI-COM Blank Module

CMBIW-X	Module reserves space for future use.	1	Off White	10	50
CMBEI-X		1	Elec. Ivory	10	50
CMBIG-X		1	Light Gray	10	50
CMBWH-X		1	White	10	50
CMBBL-X		1	Black	10	50

**ORDERING INFORMATION:**  
Order number of pieces required, in multiples of Standard Package Quantity.

## MINI-MOD™ Adapter

CMTA



• Allows all **MINI-COM** modules to be used in **MOD-COM**™ Faceplates, Boxes and Modular Patch Panels. (**MOD-COM** System replaced by more compact **MINI-COM** System).

### MINI-MOD Adapter

CMMAIW-X	<b>MINI-COM</b> Modules snap directly into <b>MINI-MOD</b> Adapter.	1	Off White	10	50
CMMAEI-X		1	Elec. Ivory	10	50
CMMAIG-X		1	Light Gray	10	50
CMMAWH-X		1	White	10	50
CMMABL-X		1	Black	10	50

**ORDERING INFORMATION:**  
Order number of pieces required, in multiples of Standard Package Quantity.

## SVHS Coupler Module Insert



For use with **MINI-COM** Bezels only. Not for use with faceplates or surface mount boxes.

CHSVHSC available 3rd quarter, '98

### 1/3 Size SVHS Coupler Module Insert

CHSVHSCIW	Module insert supplied with one SVHS coupler. Accommodates 1/3 of a single gang bezel.	1	Off White	1	10
CHSVHSCEI		1	Elec. Ivory	1	10
CHSVHSCIG		1	Light Gray	1	10
CHSVHSCWH		1	White	1	10
CHSVHSCBL		1	Black	1	10

**ORDERING INFORMATION:**  
Order number of pieces required, in multiples of Standard Package Quantity.

MODULES