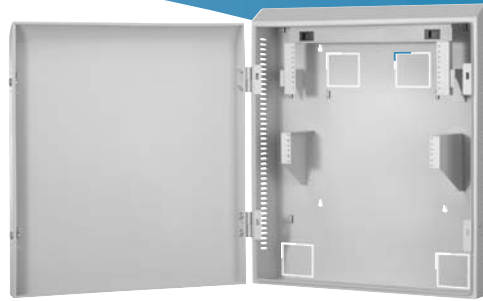


specifications

Active enclosure shall meet TIA/EIA consolidation point standard requirements. Enclosure shall be wall mountable with a rotating 3 RU patch panel bracket and holds up to 3 RU of active equipment. Conduit knockouts shall be included to route cables in and out of the enclosure. Front door shall provide a right hand or left hand swing feature.



technical information

UL approvals:	UL60950, including UL1863
Other standards:	Designed to meet NEMA Type 2 Designed to meet Telcordia GR-487-CORE tamper resistance
Dimensions:	38.50"H x 27.92"W x 8.61"D (977.9mm x 709.2mm x 218.7mm)
Weight capacity:	Total load capacity is 150 lbs.
Mounting:	Mounting brackets are included to mount 3 RU of passive components and 3 RU of active electronics up to 17.5" deep
Packaging:	Base, door, edge grommet, ten <i>TAK-TY</i> ® Hook & Loop Cable Ties, grounding strap with nut/washer for #10-32 grounding stud, four cable management bend radius clips, ID label, door latch, two sets of door hinges with hardware
Material:	16 gauge steel

key features and benefits

Cable routing	Provides optimum cable management while allowing adequate space to safely route the patch cords inside
Rotating patch panel bracket	Accepts 19" rack mountable product and rotates 90°, allowing ease of punchdown if the panel should be 110 style
High capacity	Holds up to 3 RU of passive product and up to 3 RU of active equipment, while providing multiple cable entry/exit points via optional knockout points
Modularity	Accepts <i>DATA-PATCH</i> ™ Punchdown Panels, <i>MINI-COM</i> ® Modular Patch Panels, and <i>MINI-COM</i> ® Modules for copper and fiber applications; individual modules snap in and out
T-70 raceway knockouts	Four T-70 raceway knockouts are provided as an alternative method to bring cables into and out of the enclosure
Reversible swing door	Door can be assembled to hinge on either the right or left side which provides flexibility and easy access for any mounting location
Keyed lock option	Standard locking feature for the front cover is a hasp with a padlock slot; keyed locks are also available, but sold separately (PZAELOCK)
Optional cooling fan	Fan sold separately (PZAEFAN) for applications where additional cooling is required

applications

PANZONE™ Active Wall Mount Enclosures are designed to provide an efficient and cost effective way to deploy cabling systems in open office architecture environments. Referred to as Mini Telecommunication Rooms (Mini-TRs), *PANZONE*™ Active Wall Mount Enclosures are ideal for minimal network connections (24-48) located more than 90 meters from the main telecommunications room.

This enclosure provides a compact, secure and economical solution for housing active electronics, with easy access to complete moves, adds and changes. It offers flexibility for new and existing building installations that need to be reconfigured or upgraded due to growth. The enclosure also takes into consideration power, cooling, and protection of the active equipment, plus additional cable management, dust and water protection.

PANZONE™ Active Wall Mount Enclosure

Enclosure: PZAEWM3

Optional Enclosure Components

Air exchange fan: PZAEFAN

Lock set with keys: PZAELOCK

MINI-COM® *ULTIMATE ID*™ Modular Patch Panels

24 port, 1 RU: UICMPP24BL

48 port, 2 RU: UICMPP48BL

MINI-COM® Modular Patch Panels with Labels

24 port, 1 RU: CPPL24WBL

48 port, 2 RU: CPPL48WBL

MINI-COM® Modules

Category 6: CJ688TP**

Category 5e: CJ5E88T**

SC duplex (MM): CMDEISCEI

SC simplex (SM): CMDBUSCZBU

LC duplex (MM): CMDJLCEI

LC simplex (SM): CMDJLJCZBU

ST simplex (MM): CMSTEI

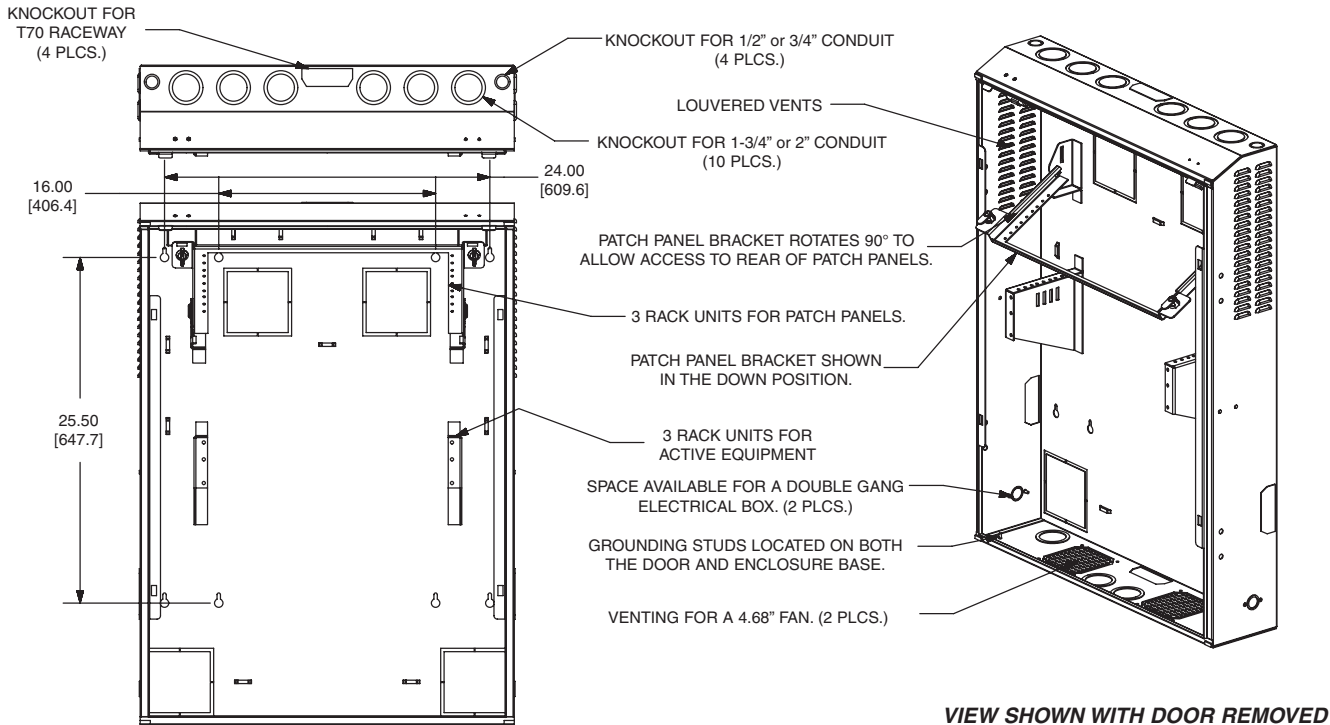
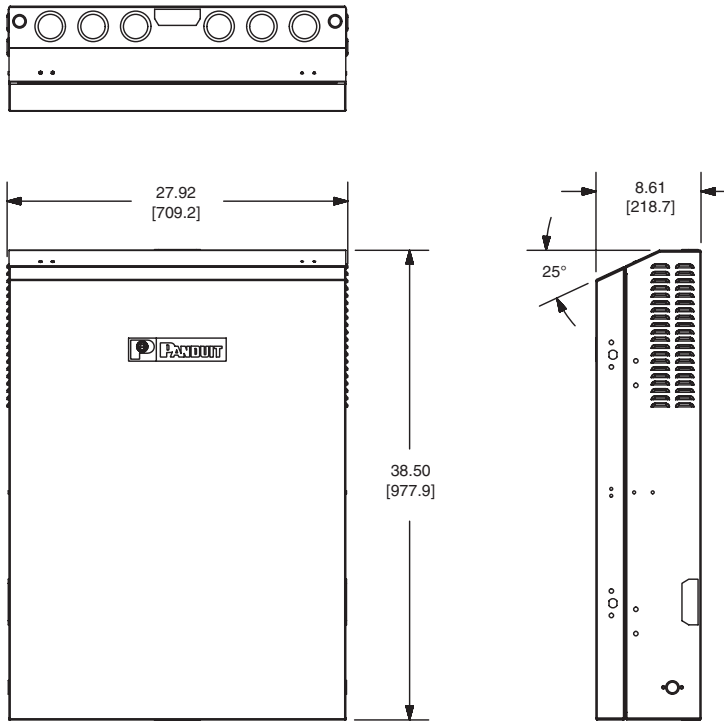
ST simplex (SM): CMSTZBU

FJ duplex (MM): FJJGM5CEI

FJ duplex (SM): FJJGS9CBU

** Substitute: IW = Off White
EI = Electric Ivory
WH = White
IG = International Gray
BL = Black
OR = Orange
RD = Red
BU = Blue
GR = Green
YL = Yellow
VL = Violet

PANZONE™ Active Wall Mount Enclosure



Dimensions are in inches (Dimensions in brackets are in millimeters)

WORLDWIDE SUBSIDIARIES AND SALES OFFICES

PANDUIT® CANADA
Markham, Ontario
Phone: 800.777.3300

PANDUIT® EUROPE LTD.
London, UK
Phone: 44.208.601.7200

PANDUIT® ASIA PACIFIC PTE. LTD.
Republic of Singapore
Phone: 65.6379.6700

PANDUIT® JAPAN
Tokyo, Japan
Phone: 81.3.3767.7011

PANDUIT® LATIN AMERICA
Jalisco, Mexico
Phone: 52.333.666.2501

PANDUIT® AUSTRALIA PTY. LTD.
Victoria, Australia
Phone: 61.3.9794.9020

For a copy of **PANDUIT®** product warranties, log on to www.panduit.com/warranty



For more information or to request a catalog

800-777-3300

cs@panduit.com

www.panduit.com

Copyright © **PANDUIT** Corp. All rights reserved.
Printed in U.S.A.

WW-OTSP04

02/2004