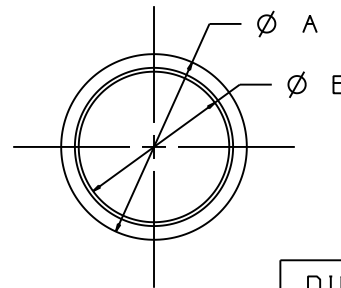
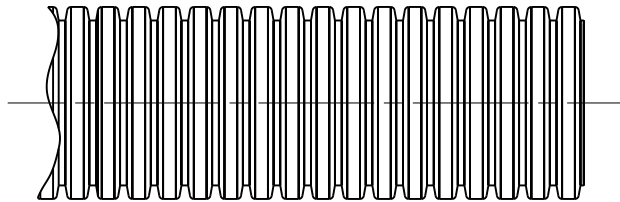


THIS COPY IS PROVIDED ON A RESTRICTED BASIS AND IS NOT TO BE USED IN ANY WAY DETRIMENTAL TO THE INTERESTS OF PANDUIT CORP.  
 MATERIAL: HEAT STABILIZED NYLON 6 MATERIAL: LOW DENSITY POLYETHYLENE

PART NO.	DIMENSIONS		WEIGHT lbs (g) / 100 ft
	A	B	
CLTS25N	0.397 (10.10)	0.277 (7.03)	0.81 (370.0)
CLTS35N	0.500 (12.7)	0.350 (8.89)	1.28 (580.0)
CLTS38N	0.556 (14.12)	0.415 (10.54)	1.47 (670.0)
CLTS50N	0.670 (17.02)	0.505 (12.83)	1.98 (900.0)
CLTS62N	0.816 (20.72)	0.650 (16.51)	2.39 (1085.0)
CLTS75N	0.935 (23.75)	0.760 (19.30)	2.75 (1250.0)
CLTS100N	1.090 (27.69)	0.915 (23.24)	3.70 (1680.0)
CLTS125N	1.500 (38.10)	1.290 (32.77)	5.77 (2620.0)
CLTS150N	1.728 (43.89)	1.480 (37.59)	6.16 (2800.0)

PART NO.	DIMENSIONS		WEIGHT lbs (g) / 100 ft
	A	B	
CLTS25F	0.397 (10.10)	0.277 (7.03)	0.75 (340.0)
CLTS35F	0.500 (12.7)	0.350 (8.89)	1.12 (510.0)
CLTS38F	0.556 (14.12)	0.415 (10.54)	1.38 (625.0)
CLTS50F	0.670 (17.02)	0.505 (12.83)	1.85 (840.0)
CLTS62F	0.816 (20.72)	0.650 (16.51)	2.29 (1040.0)
CLTS75F	0.935 (23.75)	0.760 (19.30)	2.64 (1200.0)
CLTS100F	1.090 (27.69)	0.915 (23.24)	3.52 (1600.0)
CLTS125F	1.500 (38.10)	1.290 (32.77)	6.03 (2740.0)
CLTS150F	1.728 (43.89)	1.480 (37.59)	7.39 (3360.0)




NOTES:

1. SEE PART NUMBER SUFFIX DESIGNATION ON CURRENT PRICE SHEET FOR PACKAGE SIZE AND PART COLOR.

△ 2. FOR ROLL SIZES LARGER THAN 10 FEET, SPLICES MAY OCCUR.

REV	DATE	BY	CHK	DESCRIPTION	ECN	R	CUST	SUP
7	5/17/11	LEF	VJS	A: ADDED NOTE #2	GB0222BD	7	RAMI	
6	10/7/04	JAD		ADD HEAT STABILIZED TO MATERIAL	GB0222BD	6		
5	9/25/02	LGG		CHG MATERIAL TO: LOW DENSITY POLYETHYLENE	GB0222BD	5		

DIMENSIONS IN PARENTHESES ARE IN METRIC UNITS	
CAD FILENAME/LAYERS G03597B0_DC_GB0222BD_07/00A	
 PANDUIT CORP. TINLEY PARK, ILLINOIS	
CLTS( )N, CLTS( )F (NON-SLIT) CORRUGATED TUBING	
UNLESS OTHERWISE SPECIFIED, DIMENSIONAL TOLERANCES ARE: (.X) ± (.XX) ±	UNLESS OTHERWISE SPECIFIED, ALL DIMENSIONS ARE GIVEN IN INCHES, THIRD ANGLE PROJECTION.
DRAWN BY: CMR DATE: 7-5-95 CHK'D: VJS	MAT'L: SEE ABOVE SCALE: NONE DRAWING NO. GB0222BD DWG SIZE: A