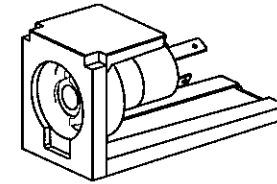
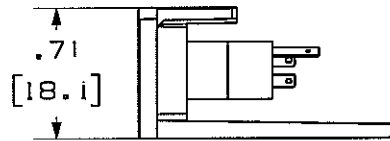
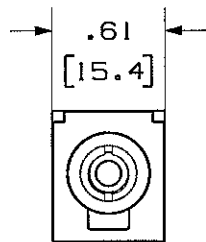
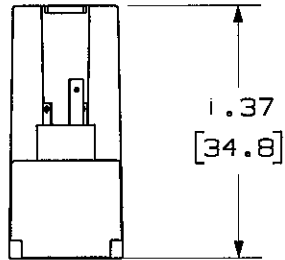


THIS COPY IS PROVIDED ON A RESTRICTED BASIS AND IS NOT TO BE USED IN ANY WAY DETRIMENTAL TO THE INTERESTS OF PANDUIT CORP.

PANDUIT P/N	WEIGHT
CM35MSS**Y	.09 LB/10 PCS (42.5 g/10 PCS)



NOTES:

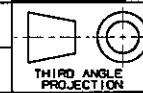
1. SEE CURRENT CATALOG FOR ADDITIONAL PART NUMBER SUFFIXES TO INDICATE COLOR AND OR PACKAGE QUANTITY.
2. SEE CATALOG FOR COMPLETE LIST OF PARTS APPLICABLE FOR USE WITH THIS PART.
3. DIMENSIONS IN \square ARE IN METRIC.
4. PART INCLUDES:
 - 1 - MODULE BASE
 - 1 - 3.5mm (1/8") SOLDER TYPE CONNECTOR (ASSEMBLED TO MODULE BASE)

MODEL FILENAME	M01611AA_CMP35_00.PRT	SIZE	A
DRAWING FILENAME	M02479HA_DC185_00A.PRT		

MINI-COM 3.5mm (1/8") HEAD PHONE JACK
SOLDER TYPE MODULE CUSTOMER DRAWING



I.I. NUMBER	N/A
PRODUCT SPEC	N/A
WORK INSTRUCTION	N/A
SCALE	NONE
PART NO.	CM35MSS**Y
DRAWING NO.	02479-185



ALL DIMENSIONS ARE GIVEN IN INCHES, UNLESS OTHERWISE SPECIFIED.
DIMENSIONAL TOLERANCES ARE:
(.X1) ± (.XXX) ± .010(.3)
(.XX) ± .03(.8) ANGLES ±

DRAWN BY	JsP
DATE	8-9-06
CHK'D	<i>MO</i>

MATERIAL	MODULE: ABS CONNECTOR: PBT
----------	-------------------------------

REV	DATE	BY	CHK	DESCRIPTION	ECN	R	CUST	SUP	OTH
R	8-9-06	JsP	<i>MO</i>	RELEASED TO PRODUCTION	02479-185	<i>MO</i>	<i>MO</i>		