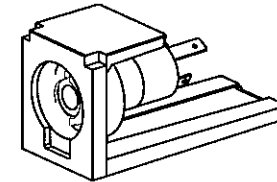
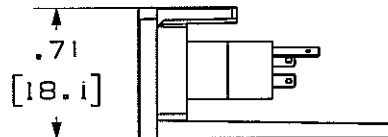
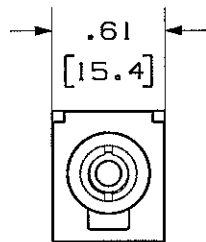
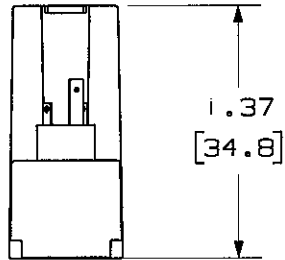


THIS COPY IS PROVIDED ON A RESTRICTED BASIS AND IS NOT TO BE USED IN ANY WAY DETRIMENTAL TO THE INTERESTS OF PANDUIT CORP.

PANDUIT P/N	WEIGHT
CM35MSS**Y	.09 LB/10 PCS (42.5 g/10 PCS)



**NOTES:**

1. SEE CURRENT CATALOG FOR ADDITIONAL PART NUMBER SUFFIXES TO INDICATE COLOR AND OR PACKAGE QUANTITY.
2. SEE CATALOG FOR COMPLETE LIST OF PARTS APPLICABLE FOR USE WITH THIS PART.
3. DIMENSIONS IN  $\square$  ARE IN METRIC.
4. PART INCLUDES:
  - 1 - MODULE BASE
  - 1 - 3.5mm (1/8") SOLDER TYPE CONNECTOR (ASSEMBLED TO MODULE BASE)

MODEL FILENAME	M01611AA_CMP35_00.PRT	SIZE	A
DRAWING FILENAME	M02479HA_DC185_00A.PRT		

MINI-COM 3.5mm (1/8") HEAD PHONE JACK  
SOLDER TYPE MODULE CUSTOMER DRAWING

<p><b>PANDUIT</b>™ CORP. TINLEY PARK, ILL 60477</p>	I.I. NUMBER	N/A		
	PRODUCT SPEC	N/A		
	WORK INSTRUCTION	N/A		
	SCALE	NONE		
<p>THIRD ANGLE PROJECTION</p>	<p>ALL DIMENSIONS ARE GIVEN IN INCHES, UNLESS OTHERWISE SPECIFIED.</p> <p>DIMENSIONAL TOLERANCES ARE:                  (.X1) ± (.XXX) ± .010(.3)                  (.XX) ± .03(.8) ANGLES ±</p>	PART NO.	CM35MSS**Y	
DRAWN BY JsP	DATE 8-9-06	MATERIAL MODULE: ABS CONNECTOR: PBT	DRAWING NO.	02479-185

REV	DATE	BY	CHK	DESCRIPTION	ECN	R	CUST	SUP	OTH
R	8-9-06	JsP	<i>MO</i>	RELEASED TO PRODUCTION	02479-185	<i>MO</i>	<i>MO</i>		