

PanNet® Audio/Video Offering



PANDUIT®
building a smarter,
unified business foundation
Connect. Manage. Automate.

PanNet® Audio/Video Offering



The audio/video industry is constantly evolving and adding new technology to the market. This technology typically requires unique products or solutions to help deliver the best performance. Audio/video systems are becoming more integrated with connectivity installations causing installers and contractors to look for a source that will best supply what is needed in the field. Panduit Audio/Video products are a comprehensive offering to fit the customers' needs.



CMUSBAAIW



CMHDMIW



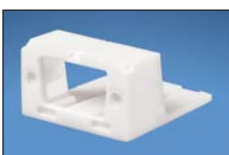
CMFIW



CMFSRIWY



CMD15HDIWY



CMDBIW-X



CJRYIW



CJRIIW



CJRWIW

Part Number	Description	Color*
Mini-Com® USB Module		
CMUSBAAIW	USB 2.0 female A to female A coupler module.	Off White

Mini-Com® HDMI Module		
CMHDMIW	HDMI 1.3 Type A female to female category 2 coupler module.	Off White

Mini-Com® F-Type Modules		
CMFIW	Module supplied with 75 ohm industry standard F-type coupler.	Off White
CMFSRIWY	Module supplied with 75 ohm self-terminating F-type coupler.	Off White

Mini-Com® 15-Pin High-Density D-Subminiature Module and Base		
CMD15HDIWY	2-position module supplied with one 15-pin DB connector mounted to a printed circuit board; terminates on site.	Off White
CMDBIW-X	2-position module base which accepts 9-pin and 15-pin high density D-subminiature connectors. For solder or crimp type connectors only.	Off White

Mini-Com® RCA 110 Punchdown Modules		
CJRYIW	Module supplied with one RCA connector with yellow insert.	Off White
CJRIIW	Module supplied with one RCA connector with red insert.	Off White
CJRWIW	Module supplied with one RCA connector with white insert.	Off White

*For other colors replace suffix IW (Off White) with EI (Electric Ivory), WH (White), IG (International Gray) or BL (Black).



CMRPRIW



CMRPYIW



CMRPWIW



CMRPBIW



CMRPGIW



CHR3RGBIW



CHR3WYRIW



CM35MSSIW



CM35MSCIWY



CMBPBIWY



CMBPRIWY



CMBA75IWY



CMBAIWY

Part Number	Description	Color*
Mini-Com® RCA Pass-Through Modules		
CMRPRIW	Module supplied with one RCA pass-through coupler with red insert.	Off White
CMRPYIW	Module supplied with one RCA pass-through coupler with yellow insert.	Off White
CMRPWIW	Module supplied with one RCA pass-through coupler with white insert.	Off White
CMRPBIW	Module supplied with one RCA pass-through coupler with blue insert.	Off White
CMRPGIW	Module supplied with one RCA pass-through coupler with green insert.	Off White

Mini-Com® RCA 1/3 Inserts

CHR3RGBIW	1/3 insert, with three RCA pass-through couplers. RCA insert colors are red, green and blue. R, G, B component video.	Off White
CHR3WYRIW	1/3 insert, with three RCA pass-through couplers, RCA insert colors are white, yellow and red. Composite video are left and right stereo.	Off White

Mini-Com® 3.5mm Stereo Connector and Coupler Modules

CM35MSSIW	Module supplied with one 3.5mm (1/8") stereo headset solder-type connector.	Off White
CM35MSCIWY	3.5mm stereo coupler module.	Off White

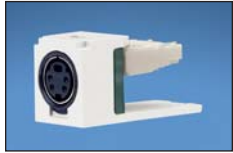
Mini-Com® 5-Way Binding Post Modules

CMBPBIWY [^]	Module supplied with one 5-way binding post with black stripe.	Off White
CMBPRIWY [^]	Module supplied with one 5-way binding post with red stripe.	Off White

Mini-Com® BNC Coax Coupler Modules

CMBA75IWY	Module supplied with 75 ohm industry standard BNC coupler.	Off White
CMBAIWY	Module supplied with 50 ohm industry standard BNC coupler.	Off White

*For other colors replace suffix IW (Off White) with EI (Electric Ivory), WH (White), IG (International Gray) or BL (Black).



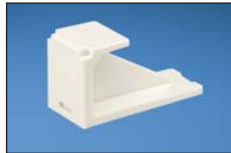
CJSVIW



CMSVCIW



CMBRS485OR



CMBIW-X



CHD9CIWY



CHD15HDCIWY



CHD15HDSCIWY



CBIW



CBIW-2G



CBEIWY



CBEIW-2GY

Part Number	Description	Color*
Mini-Com® S-Video Modules		
CJSVIW	Module supplied with one S-Video punchdown connector.	Off White
CMSVCIWY	Module supplied with one S-Video pass-through coupler.	Off White

Mini-Com® BAS Connector Module

CMBRS485OR**	Module supplied with 22 AWG min/18 AWG max connector.	Orange
--------------	---	--------

Mini-Com® Blank Module

CMBIW-X	Module, reserves space for future use.	Off White
---------	--	-----------

D-Subminiature Inserts

CHD9CIWY	1/3 insert with 9-pin female to female coupler.	Off White
CHD15HDCIWY	1/3 insert with 15-pin high density female to female coupler, SVGA capable.	Off White
CHD15HDSCIWY	1/3 insert with one 15-pin DB connector mounted to a printed circuit board; terminates on site; SVGA capable.	Off White

Faceplate Frames

CBIW	Single gang faceplate frame accepts two 1/2 size module inserts or three 1/3 size module inserts.	Off White
CBIW-2G	Double gang faceplate frame accepts up to four 1/2 size module inserts or six 1/3 size module inserts.	Off White
CBEIWY	Single gang faceplate frame accepts up to two 1/2 size module inserts or three 1/3 size module inserts. Supplied with labels and label cover/screw covers.	Off White
CBEIW-2GY	Double gang faceplate frame which accepts up to four 1/2 size module inserts or six 1/3 size module inserts. Supplied with labels and label cover/screw covers.	Off White

*For other colors replace suffix IW (Off White) with EI (Electric Ivory), WH (White), IG (International Gray) or BL (Black).

**For other colors replace suffix OR (Orange) with BL (Black), GR (Green), RD (Red) or YL (Yellow).

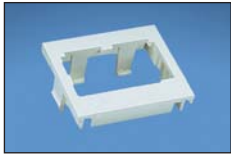
^For other colors replace suffix IW (Off White) with EI (Electric Ivory) or WH (White).



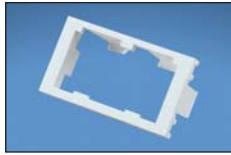
CHS2SIW-X



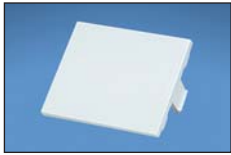
CHS2IW-X



CHF2IW-X



CHF2MIW-X



CHB2IW-X



CHB2MIW-X



CFPL2IWY



CFPL3IWY



CFPL4IWY



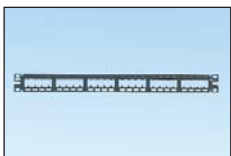
CFPL6IWY



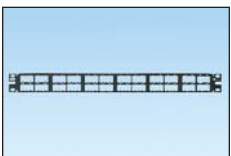
CPPA24FMWBLY



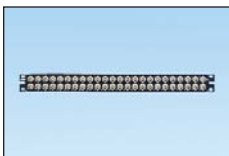
CPPA48HDWBLY



CPP24FMBLY



CPP48HDWBLY



CP48BNCBLY

Part Number	Description	Color*
Mini-Com® Inserts		
CHS2SIW-X	Two module space, 1/2 size, sloped shuttered insert accepts two Mini-Com® Modules.	Off White
CHS2IW-X	Two module space, 1/2 size, sloped insert accepts two Mini-Com® Modules.	Off White
CHF2IW-X	Two module space, 1/2 size, flat insert accepts two Mini-Com® Modules.	Off White
CHF2MIW-X	Two module space, 1/3 size, flat insert accepts two Mini-Com® Modules.	Off White
CHB2IW-X	1/2 blank insert. Reserves space for future upgrades.	Off White
CHB2MIW-X	1/3 blank insert. Reserves space for future upgrades.	Off White

Mini-Com® Classic Faceplates with Label and Label Cover

CFPL2IWY	Single gang, vertical faceplate accepts two Mini-Com® Modules.	Off White
CFPL3IWY	Single gang, vertical faceplate accepts three Mini-Com® Modules.	Off White
CFPL4IWY	Single gang, vertical faceplate accepts four Mini-Com® Modules.	Off White
CFPL6IWY	Single gang, vertical faceplate accepts six Mini-Com® Modules.	Off White

Mini-Com® Modular Patch Panels

CPPA24FMWBLY	24-port angled flush mount patch panel supplied with rear mounted faceplates, 1RU.	Black
CPPA48HDWBLY	48-port angled high-density patch panel supplied with rear mounted faceplates, 1RU.	Black
CPP24FMBLY	24-port flat flush mount patch panel supplied with rear mounted faceplates, 1RU	Black
CPP48HDWBLY	48-port flat high-density patch panel supplied with rear mounted faceplates, 1RU.	Black

Mini-Com® BNC Coupler Panel

CP48BNCBLY	48-port patch panel with 48 pre-installed 75 ohm BNC couplers.	Black
------------	--	-------

*For other colors replace suffix IW (Off White) with EI (Electric Ivory), WH (White), IG (International Gray) or BL (Black). All faceplate frames supplied with mounting screws.

Real-World Solutions to Ensure the Success of Our Customers

With a proven reputation for excellence and technology innovation, a robust ecosystem of global partners, and long-term alliances with top industry leaders, Panduit is a valuable, trusted partner offering strategic vision and real-world solutions to ensure the success of our customers.



Innovative Technology Leadership

Panduit is an industry leader in developing innovative technology solutions that meet the rapidly evolving needs of our customers around the world. Our commitment to continued leadership is supported by significant ongoing investment, dedicated manufacturing facilities, strategic technology alliances, and collaborative R&D with other industry leaders.



Global Business & Commitment

Panduit's ongoing commitment to excellence and our technology alliances with key industry leaders such as Cisco Systems, EMC, Emerson, and IBM, enables our highly skilled and knowledgeable global sales, systems engineering, and technical support teams to engage with critical customer challenges that range from initial problem determination all the way to resolution. Local specialists, trained to global standards and competencies, provide consistent regional support that brings value to local business. Our global value chain, which combines manufacturing, distribution, and service, provides prompt responses to customer-related issues, and streamlines procurement and delivery to any global destination.



Best-in-Class Partner Ecosystem

Panduit employs a consultative approach to identify customer needs and engage appropriate partners in a collaborative fashion to serve our customers. Panduit's robust ecosystem of architects, consultants, engineers, designers, systems integrators, contractors, and distributors offer a full portfolio of lifecycle services. Our partners are trained on relevant services to Plan & Design, Build & Deploy, and Maintain & Operate to deliver predictable and measurable results.



Worldwide Alliances

Panduit has established long-term strategic alliances with top global industry leaders such as Cisco Systems, EMC, HP, IBM, Liebert, and Rockwell Automation to develop and integrate innovative, holistic solutions for our customers. We continually invest in relationships and resources for solving our customers' greatest business challenges.



Eco-Sustainability & Global Citizenship

With a long-standing commitment to environmental excellence, Panduit continually develops and implements solutions designed to protect, replenish, and restore the world in which we live and operate. This commitment is demonstrated by Panduit's LEED-certified new world headquarters and future green building plans using its own revolutionary Unified Physical InfrastructureSM vision to enable convergence of critical systems for driving sustainability.

Panduit Corp.
World Headquarters
Tinley Park, IL 60487

cs@panduit.com
US and Canada: 800.777.3300
Europe, Middle East, and Africa:
44.208.601.7200
Latin America: 52.33.3777.6000
Asia Pacific: 65.6305.7575

www.panduit.com

PANDUIT®