


Search Results

- Evaluate
- FAQ's
- How to Buy
- Bill of Material
 - Favorite Products List
 - Locate Distributor

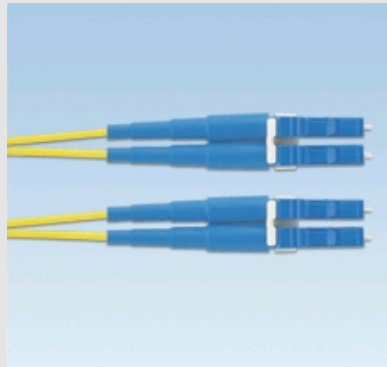
Home > Products Overview > Search Results >

Current refinements (click  to remove) Search Tips


 Text Search: 'F9LE10-10M3'

Your search criteria matched only one product, shown below

F9LE10-10M3



- Pass all TIA/EIA-568-B.3 performance requirements
- 100% factory inspected end face geometry in compliance with Telcordia GR -326-CORE, Issue 3
- Typical insertion loss per connection: 0.25dB
- UPC polished (55dB minimum return loss)
- Factory terminated and 100% tested for insertion loss and return loss
- Insertion loss and return loss data recorded for every singlemode patch cord
- Lifetime traceability of test data to a Q.C. number on each patch cord
- Highest quality flame retardant fiber optic cable with tight -buffered coating on each optical fiber

Part Number	F9LE10-10M3
RoHS Compliancy Status	RoHS directive is not applicable
Note	Intended for use in fixed installations which are outside the scope of RoHS
Part Description	LC to LC singlemode duplex patch cord, 1.6mm jacketed cable (one duplex LC connector or each end) – 9/125µm.
Product Type	LC Patch Cords
Length (m)	3
Fiber Compatibility	9/125µm
Fiber Cable Size	1.6mm
Fiber Cable Type	Jacketed
Fiber Type	Singlemode
Cable Color	Yellow
Cable Type	Duplex
CE Compliant	No
Connector 1 Type	LC Connector
Connector 2 Type	LC Connector
End Configurations	LC to LC
Fiber Count	2
Flammability Rating	Low Smoke Zero Halogen (LSZH)
Pricing Description	LC-LC LSZH 9µm Dupl Singlemode 1.6mm PC 3m
Min. Order UOM	PC
Min. Order Qty.	1
BOM Qty. (# of Pkgs.)	<input type="text" value="0"/>
Add to Favorite Product List	

Please [register](#) to utilize the 'Bill of Materials', 'Submit Quotes' and 'Favorite Product List' features.