

Communication Cable Management Accessories for Ladder Racks



Threaded Rod Covers
(TRC18FR-X8)



Stackable Cable Rack Spacers
(CRS4-125-X)



Waterfall Accessories
(CMW-KIT)

Other Cable Management Accessories



D-Rings
(CMVDR2)



Tak-Ty® Hook & Loop
Cable Tie Mounts
(ABMT-A-C)
(ABMT-A-C20)



Bundle Retainers
(BR2-1.3)



Flat PAN-Post™ Standoffs
(PPF2SV-S25-V)



Vertical Saddles
(VWSDC-C)

WORLDWIDE HEADQUARTERS

PANDUIT CANADA Markham, Ontario cs-cdn@panduit.com Phone: 800.777.3300	PANDUIT EUROPE LTD. London, UK cs-emea@panduit.com Phone: 44.20.8601.7200	PANDUIT ASIA PACIFIC PTE. LTD. Republic of Singapore cs-ap@panduit.com Phone: 65.6379.6700	PANDUIT JAPAN Tokyo, Japan cs-japan@panduit.com Phone: 81.3.3767.7011	PANDUIT LATIN AMERICA Jalisco, Mexico cs-la@panduit.com Phone: 52.333.666.2501	PANDUIT AUSTRALIA PTY. LTD. Victoria, Australia cs-aus@panduit.com Phone: 61.3.9794.9020
--	---	--	---	--	--

For a copy of PANDUIT product warranties, log on to www.panduit.com/warranty

For more information or to request a catalog

www.panduit.com

cs@panduit.com • 800-777-3300



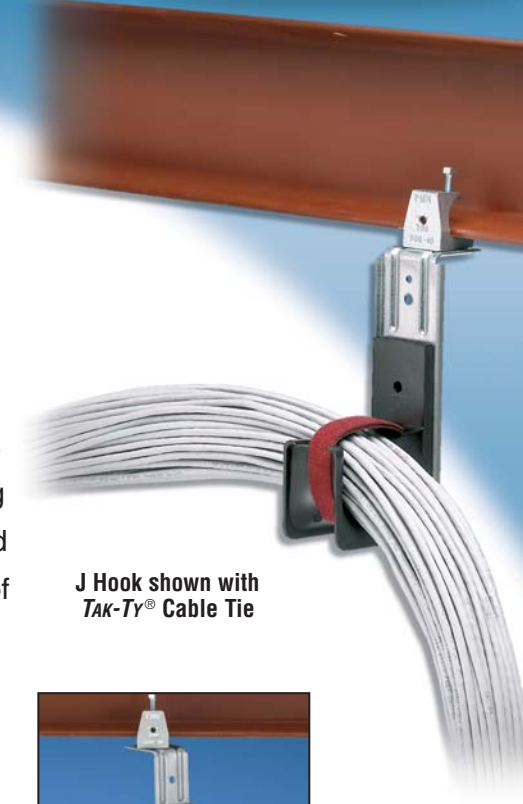
© PANDUIT Corp. All rights reserved.
Printed in U.S.A.
SA-WACB09
08/2004



J-Mod™ Future Ready Cable Support System

Let PANDUIT Support Your Cabling Systems

The J-Mod™ Cable Support System is a versatile solution for routing sensitive communication cables. The modular design allows for complete flexibility of assembly in multiple configurations and allows expansion of the system without disturbance of an existing installation. The non-metallic J Hook features complete horizontal and vertical 1" bend radius control, which helps prevent degradation of cable performance.



J Hook shown with
Tak-Ty® Cable Tie



Ceiling Mount Bracket



Drop Wire Bracket



Threaded Rod Bracket



Screw-On Beam
Clamp Bracket

Key Features

Benefits

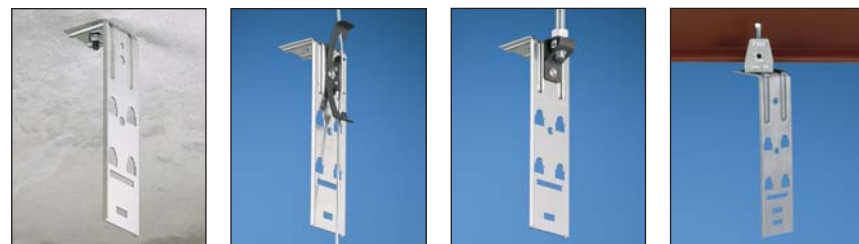
Unique patent pending design	Allows user to install additional J Hooks without disturbance of an existing installation Metal chaining brackets provide complete metallic support Eliminates the need for a metal bracket or threaded rod to extend below J Hook Prevents accidental disengagement after chaining bracket and J Hooks are installed
Complete horizontal and vertical 1" bend radius control	Helps prevent degradation of cable performance Prevents pinch points that could cause damage to cable
Non-metallic J Hook	Cables do not come in contact with metal
Strong and durable materials	Meets UL 2043 and CAN/ULC S102.2 and are suitable for use in air handling spaces Ability to manage and support a large capacity of cables
Modular design	Provides flexibility for assembly in multiple configurations
Pre-ripped brackets	Allows for attachment to ceilings, beams, threaded rods, and drop wires to meet requirements of a variety of applications
Cable Tie Channel	Allows user to easily install 3/4" Tak-Ty® Cable Ties to retain cable bundle
Snap lock attachment with I-Beam member	Eases assembly and provides a strong and secure attachment of J Hooks to the mounting bracket and chaining brackets

Typical Installation Instructions

Step 1: Determine Installation Type

A. If mounting to a structural member, choose appropriate bracket and use with J Hook JM2H-X20.

B. If mounting to wall, select J Hook JM2H2W-X20 and secure with two user supplied screws to complete installation.



Ceiling Mount Bracket Drop Wire Bracket Threaded Rod Bracket Screw-On Beam Clamp Bracket



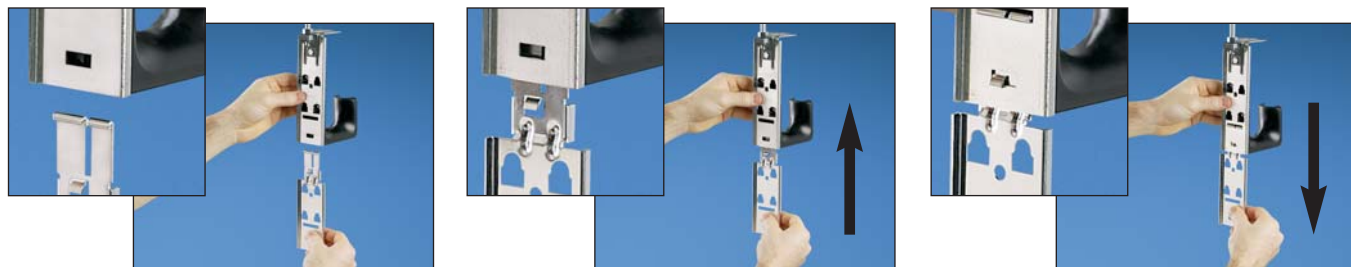
Step 2: First-Level Installation

Align snap lock attachment of J Hook with holes of the chosen bracket and snap J Hook into position. If additional capacity is needed, a second J Hook can be snapped on the back. (The photos below show an example of a single-level threaded rod bracket installation.)



Step 3: Addition of Chaining Bracket

If additional levels are required, install the chaining bracket JM2CB-X. To install the chaining bracket, align it under the assembly. Slide chaining bracket between the J Hook and the metal bracket until it snaps into place. The chaining bracket can be inserted in only one orientation. After the chaining bracket snaps into place, pull down to fully engage and create a continuous metal backbone.



Step 4: Second-Level Installation

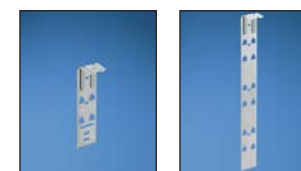
Attach J Hooks as explained in first-level installation above. Repeat for additional J Hooks as necessary. If required, one additional chaining bracket may be installed to create a maximum third-level installation. (Final assembly shown is a second-level installation consisting of one threaded rod bracket, one chaining bracket, and four J Hooks.)



JM2H2W-X20 JM2H2-X20



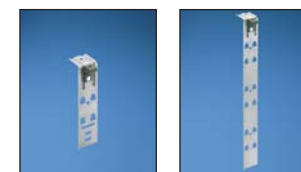
JM2CB-X



JM2CMB25-1-X JM2CMB25-3-X**



JM2DWB-1-X JM2DWB-3-X**



JM2TRB38-1-X JM2TRB38-3-X**



JM2SBCB87-1-X JM2SBCB87-3-X**



TAK-Ty® Cable Tie routed through cable tie channel

Part Number	Part Description	Material*	Max. Static Load		Std. Pkg. Qty.‡	Std. Ctn. Qty.
			Lbs.	(kg)		
J Hook with Maximum 2" Bundle Capacity						
JM2H2W-X20	J Hook for wall mount applications only. Two 1/4" (M6) mounting holes for user supplied screws.	Nylon	30	(13.61)	10	50
JM2H2-X20	J Hook with snap lock attachments for use with all brackets listed below.	Nylon	30	(13.61)	10	50

Chaining Bracket

JM2CB-X	Chaining bracket to extend J-Mod™ System capacity one level. Capacity: 3 levels maximum. For use with all single-level mounting brackets listed below.	Galvanized Steel	120	(54.45)	10	50
---------	--	------------------	-----	---------	----	----

Ceiling Mount Brackets

JM2CMB25-1-X	Single-level ceiling mount bracket with one 1/4" (M6) mounting hole.	Galvanized Steel	180	(81.65)	10	50
JM2CMB25-3-X**	Three-level ceiling mount bracket with one 1/4" (M6) mounting hole. Maximum capacity of 6 J Hooks.	Galvanized Steel	180	(81.65)	10	50

Drop Wire Brackets

JM2DWB-1-X	Single-level drop wire bracket. Attaches to #12 wire, threaded rod up to 3/8" diameter, or 1/8" – 3/8" thick flanges. Maximum capacity of 1 J Hook per level.	Galvanized Steel	20	(9.07)	10	50
JM2DWB-3-X**	Three-level drop wire bracket. Attaches to #12 wire, threaded rod up to 3/8" diameter, or 1/8" – 3/8" thick flanges. Maximum capacity of 1 J Hook for each of 3 levels.	Galvanized Steel	40	(18.14)	10	50

Threaded Rod Brackets

JM2TRB38-1-X	Single-level threaded rod bracket. Accepts 1/4" – 3/8" threaded rod.	Galvanized Steel	180	(81.65)	10	50
JM2TRB38-3-X**	Three-level threaded rod bracket. Accepts 1/4" – 3/8" threaded rod. Maximum capacity of 6 J Hooks.	Galvanized Steel	180	(81.65)	10	50

Screw-On Beam Clamp Brackets

JM2SBCB87-1-X	Single-level screw-on beam clamp bracket for use with flanges up to 7/8" thick.	Galvanized Steel	180	(81.65)	10	50
JM2SBCB87-3-X**	Three-level screw-on beam clamp bracket for use with flanges up to 7/8" thick. Maximum capacity of 6 J Hooks.	Galvanized Steel	180	(81.65)	10	50

Part Number	Part Description	Std. Pkg. Qty.‡	Std. Ctn. Qty.
TAK-Ty® Cable Ties Recommended for Use with the J-Mod™ Cable Support System			
HLS3S-X0	3/4" TAK-Ty® Cable Ties – 12" strips – Black	10	100
HLSP3S-X12‡‡	3/4" TAK-Ty® Cable Ties – 12" strips – Maroon – UL Listed‡‡	10	100

**Not for use with chaining brackets.

*Suitable for use in air handling spaces per UL 2043. Listed in accordance with CAN/ULC S102.2 when mounted as single units or in pairs. Minimum spacing of 4 ft. (1220mm) required between mount points. (Flame Spread Rating = 0, Smoke Developed Classification = 30).

‡Order number of pieces required in multiples of Std. Pkg. Qty.

‡‡UL Listed for use in air handling spaces per NEC Section 300-22 (c) and (d).