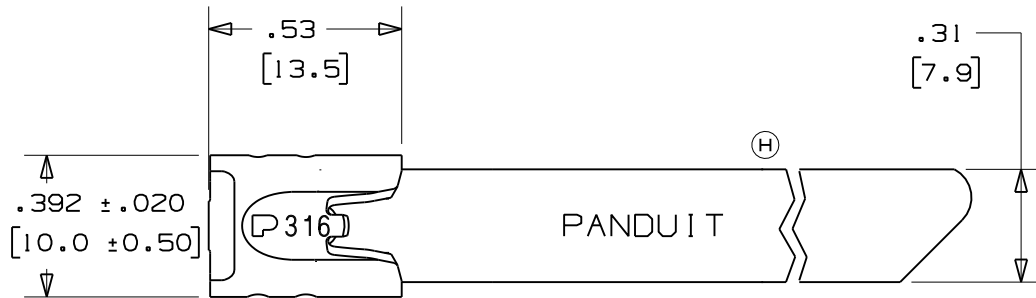
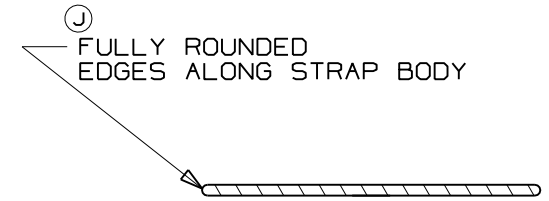
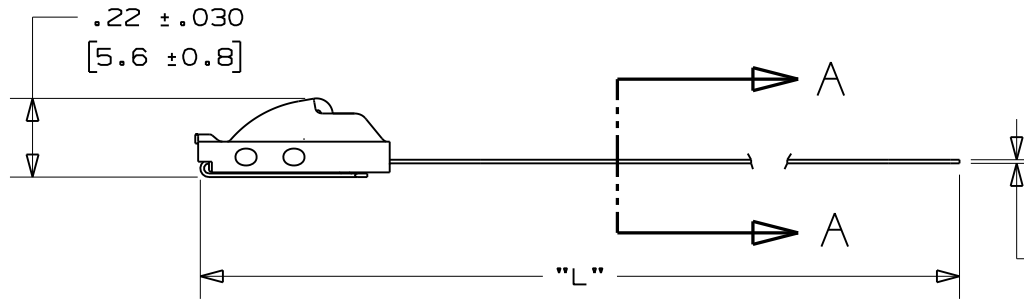


THIS COPY IS PROVIDED ON A RESTRICTED BASIS AND IS NOT TO BE USED IN ANY WAY DETRIMENTAL TO THE INTERESTS OF PANDUIT CORP.



	PANDUIT PART NO.	PACKAGE QTY.	MAX BUNDLE DIA	LENGTH (E) L ±.3 [7]
(C)	MLT2H-LP316	50	2" [ 51 ]	7.9" [ 201 ]
(A)	MLT2.7H-LP316	50	2.7" [ 69 ]	10.2" [ 259 ]
(D)	MLT4H-LP316	50	4" [ 102 ]	14.3" [ 362 ]
	MLT6H-LP316	50	6" [ 152 ]	20.5" [ 521 ]
(F)	MLT8H-LP316	50	8" [ 203 ]	26.8" [ 679 ]
	MLT10H-LP316	50	10" [ 254 ]	33.0" [ 838 ]
(K)	MLT2H-TL316	250	2" [ 51 ]	7.9" [ 201 ]
	MLT4H-TL316	250	4" [ 102 ]	14.3" [ 362 ]



.010 ± .002  
[0.25 ± 0.05]

SECTION A - A  
SCALE: 6x

NOTES:

- 1.) APPLICATION TOOLS - GS4MT, PPTMT, ST2MT, ST3MT, HTMT
- (B) 2.) MINIMUM LOOP TENSILE STRENGTH - 450 LBS (2000 NEWTONS) WHEN TESTED ON A 1.5" MANDREL.
- 3.) [ ] DENOTES DIMENSION IN MILLIMETERS
- 4.) TOLERANCES:  
 .XXX = ±.010 [ .25 ]  
 .XX = ±.02 [ .5 ]  
 .X = ±.03 [ .8 ]  
 ANGLES = ±2°
- 5.) MATERIAL: 316 STAINLESS STEEL

04	11/06	JAMB	SKB	(K) ADDED PANDUIT PART NO'S MLT2H-TL316 & MLT4H-TL316 PACKAGE QTY. 250 TO TABLE	SS00281	---
03	8/04	JAMB	DPN	(J) REMOVED "AISI NO.1 FULL RADIUSED" AND REPLACED WITH "FULLY ROUNDED"	11907	CCH JJB
02	11/03	JAMB	DPN	(G) ADDED APPLICATION TOOL "ST3MT". (H) REMOVED "316" DESIGNATION FROM PANDUIT I.D.	11292	CCH JJB
01	6/03	JAMB	DPN	(A) ADDED PART NO. MLT2.7H-LP316 (B) MIN. LOOP TENSILE STRENGTH WAS 250 LBS. (1112 NEWTONS)	10568	CCH JJB
--	---	---	---	(C) MAX. BUNDLE DIA. (mm) [WAS 50] (D) MAX. BUNDLE DIA. (mm) WAS [101], LGTH. WAS 14.2" [361] (E) TOL. WAS ±.2 [5] (F) LGTH. WAS 681	---	---
00	9/02	JAMB	DPN	RELEASED	10059	CCH JJB
REV	DATE	BY	CHK	DESCRIPTION	ECN #	PM CUST

**PANDUIT**

CORP.

TINLEY PARK, ILLINOIS

METAL LOCKING TIE  
HEAVY SERIES - 316 STAINLESS STEEL

DRAWN BY JAMB    CHK'D DPN    SCALE 2x    DRAWING NO. S41116

S41116\_04