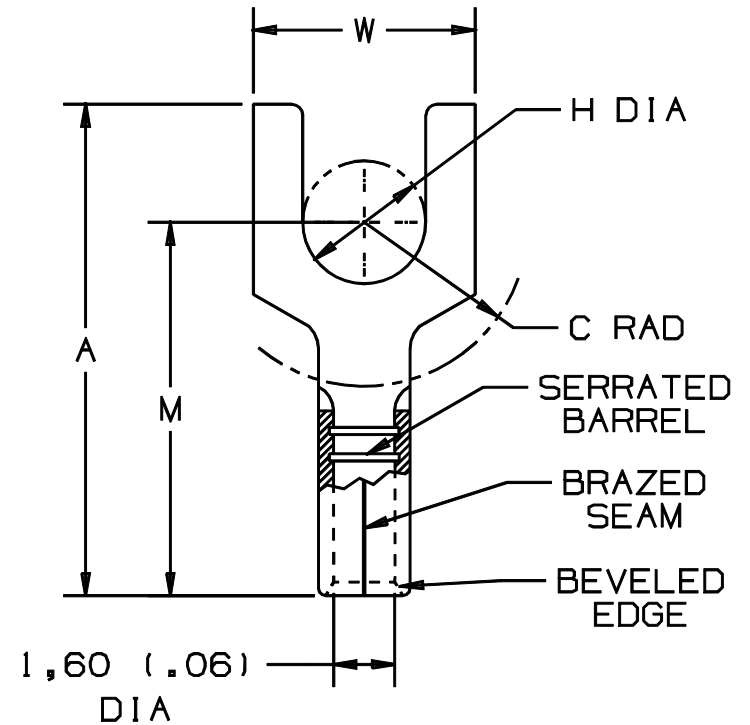


THIS COPY IS PROVIDED ON A RESTRICTED BASIS AND IS NOT TO BE USED IN ANY WAY DETRIMENTAL TO THE INTERESTS OF PANDUIT CORP.

PANDUIT PART #		STUD SIZE	DIMENSIONS mm				
PREFIX	PK		A $\pm 0,51$	W $\pm 0,25$	C $\pm 0,38$	M $\pm 0,51$	H $\pm 0,25$
PM1-3F	-C -M	M3	16,00 (.63)	5,84 (.23)	5,59 (.22)	12,45 (.49)	3,30 (.13)
PM1-4F	-C -M	M4	17,53 (.69)	8,13 (.32)	6,35 (.25)	13,46 (.53)	4,32 (.17)
PM1-5F	-C -M	M5	18,03 (.71)	8,80 (.35)	6,60 (.26)	13,97 (.55)	5,08 (.20)
PM1-6F	-C -M	M6	22,35 (.88)	11,18 (.44)	8,89 (.35)	16,00 (.63)	6,60 (.26)

NOTES:

- USED FOR:  
A. 0,5-1,5mm<sup>2</sup> (#22-18 AWG), SOLID OR STRANDED, COPPER WIRE
- MATERIAL:  
A. STAMPING - 0,81mm (.03) THK COPPER, TIN PLATED
- DIMENSIONS IN BRACKETS ARE IN INCHES
- PACKAGE QTY:  
A. STD: C=100  
B. BULK: M=1000
- WIRE STRIP LENGTH:  $7,1 \begin{matrix} +,8 \\ -0 \end{matrix}$  ( $9/32 \begin{matrix} +1/32 \\ -0 \end{matrix}$ )
- INSTALLATION TOOLS: REF. DWGS. A41522, A41523, A41524, A41525



A41427\_02

02	10/97	TM		CHANGED DECIMAL POINTS TO COMMAS				 TINLEY PARK, ILLINOIS NON-INSULATED METRIC FORK 0,5-1,5mm <sup>2</sup> BARREL
01	1/97	TM	RLS	UPDATED DIMENSIONS FILESPEC WAS NPC_A41427_00	05478	LA	DH	
00	10/91	BK	RLS	RELEASED	00687	LA	KRS	
REV	DATE	BY	CHK	DESCRIPTION	ECN #	CUST	PM	DRAWN BY: BDK Ck'D: [blank] SCALE: NONE DRAWING NO.: A41427