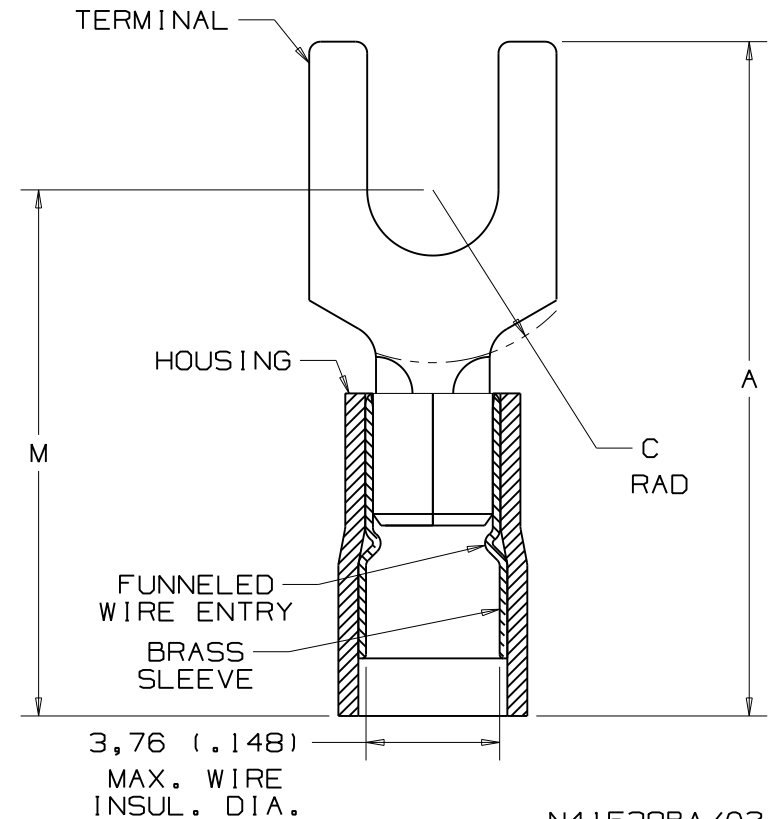
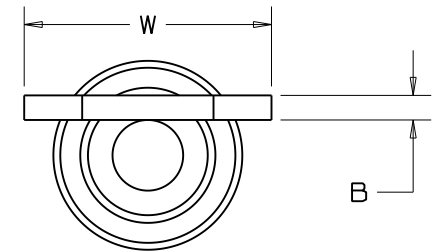


| PART NUMBER | STUD SIZE | WIRE RANGE mm ² | DIMENSIONS mm | | | | |
|-------------|-----------|-------------------------------|-----------------|-----------------|---------------|-----------------|-----------------|
| | | | A ±,76 (.03) | W ±,25 (.01) | C MIN | B ±,25 (.01) | M ±,76 (.03) |
| PMNF 1-3F | M3 | 0,5-1,5 (22-18) | 19,79 (.78) | 5,89 (.23) | 4,95 (.20) | ,81 (.03) | 16,23 (.64) |
| PMNF 1-4F | M4 | 0,5-1,5 (22-18) | 21,34 (.84) | 8,18 (.32) | 5,82 (.23) | ,81 (.03) | 17,12 (.67) |
| PMNF 1-5F | M5 | 0,5-1,5 (22-18) | 21,77 (.86) | 8,94 (.35) | 6,30 (.25) | ,81 (.03) | 17,63 (.69) |
| PMNF 1-6F | M6 | 0,5-1,5 (22-18) | 26,14 (1.03) | 11,23 (.44) | 8,41 (.33) | ,81 (.03) | 19,79 (.78) |

NOTES:

- USED FOR:
 - A. 600V MAX. VOLTAGE RATING
 - B. 105°C (221°F) MAX. TEMP. RATING
 - C. STRANDED COPPER WIRE
- SEE www.panduit.com FOR PART NUMBER SUFFIX DESIGNATION FOR PACKAGE SIZE.
- MATERIAL:
 - A. STAMPING: COPPER, TIN PLATED
 - B. HOUSING: NYLON, RED
 - C. SLEEVE: BRASS, TIN PLATED
- WIRE STRIP LENGTH: $5,6^{+,8}_{-0}$ ($7/32^{+1/32}_{-0}$)
- INSTALLATION TOOLS: CT-1550, CT-2500 WITH CT-2550CH CRIMP HEAD
- DIMENSIONS IN BRACKETS ARE IN INCHES OR AWG



N41538BA/02

PANDUIT CORP.

TINLEY PARK, ILLINOIS

0,5-1,5 mm² METRIC NYLON INSULATED, FUNNELED ENTRY FORK TERMINAL

| | | | | | | | |
|-----|----------|----|-----|---|-------|------|----|
| 02 | 12/20/11 | FS | | Obsolete installation tools removed, UL information clarified, general dimensional updates. | | | |
| 01 | 10/97 | TM | | CHANGED DECIMAL POINTS TO COMMAS | | | |
| 00 | 2/92 | DL | SJ | RELEASED | 00816 | LA | KS |
| REV | DATE | BY | CHK | DESCRIPTION | ecn | CUST | PM |

| | | | | | | |
|----------|-----|-------|-------|------|-------------|--------|
| DRAWN BY | DRL | CHK'D | SCALE | NONE | DRAWING NO. | A41538 |
|----------|-----|-------|-------|------|-------------|--------|