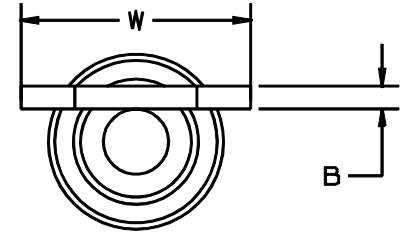


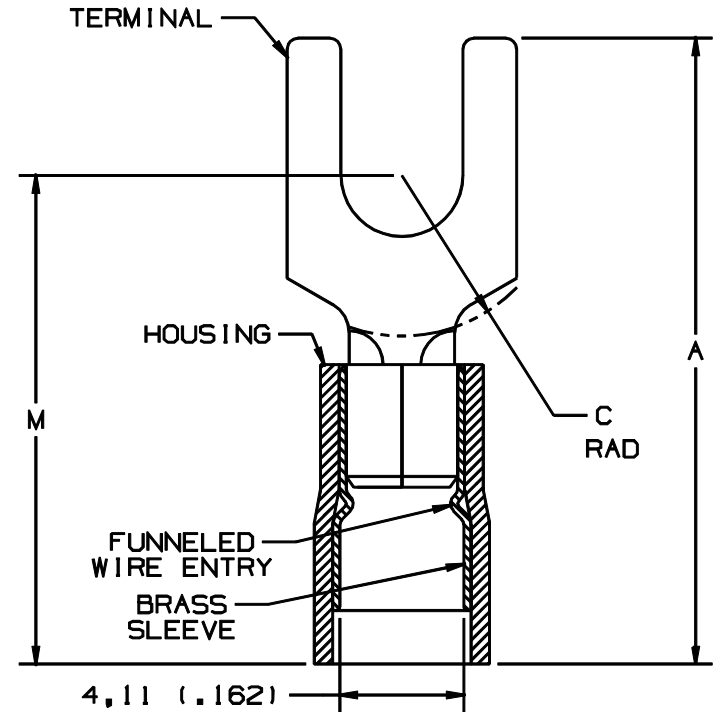
THIS COPY IS PROVIDED ON A RESTRICTED BASIS AND IS NOT TO BE USED IN ANY WAY DETRIMENTAL TO THE INTERESTS OF PANDUIT CORP.

PART NUMBER		STUD SIZE	WIRE RANGE mm ²	DIMENSIONS mm				
PREFIX	PK			A ^{±.25}	W ^{±.25}	C ^{±.38}	B ^{±.25}	M ^{±.50}
PMNF2-3F	-C -M	M3	1.5-2.5 (.16-.14)	19.81 (.78)	5.89 (.23)	5.05 (.20)	.81 (.03)	16.26 (.64)
PMNF2-4F	-C -M	M4	1.5-2.5 (.16-.14)	21.34 (.84)	7.87 (.31)	5.89 (.23)	.81 (.03)	17.27 (.68)
PMNF2-5F	-C -M	M5	1.5-2.5 (.16-.14)	21.85 (.86)	8.58 (.34)	6.35 (.25)	.81 (.03)	17.78 (.70)
PMNF2-6F	-C -M	M6	1.5-2.5 (.16-.14)	26.16 (1.02)	11.18 (.44)	8.45 (.33)	.81 (.03)	18.81 (.74)



NOTES:

- USED FOR:
 - A. 600V MAX. VOLTAGE RATING
 - B. 105°C (221°F) MAX. TEMP. RATING
 - C. SOLID & STRANDED COPPER WIRE
- PACKAGE QTY:
 - A. STD: C=100
 - B. BULK: M=1000
- MATERIAL:
 - A. STAMPING: ETP 110 COPPER, TIN PLATED
 - B. HOUSING: TYPE 6/6 NYLON, BLUE
- WIRE STRIP LENGTH: $5.6^{+.8}_{-0}$ ($7/32^{+1/32}_{-0}$)
- INSTALLATION TOOLS: REF DWGS. A41522, A41523, A41524, A41525
- DIMENSIONS IN BRACKETS ARE IN INCHES OR AWG



A41518_04

04	10/97	JAMB		CHANGED PERIODS TO COMMAS ON ALL METRIC DIMENSIONS.			
03	1/97	TM	RLS	UPDATE DIMENSIONS FILESPEC WAS NPC_A41518_02	05478	DBH	LA
02	1/92	BK	RLS	CHANGED COMMAS TO PERIODS #5 WAS A41511, #1C ADDED COPPER	00765	KS	LA
01	8/91	SJ	SJ	LM WIRE STRIP LENGTH WAS 7.1 mm	00563	KS	LA
00	6/91	BK	SJ	RELEASED	00538	KS	LA
REV	DATE	BY	CHK	DESCRIPTION	ECN #	PM	CUST

PANDUIT

CORP.

TINLEY PARK, ILLINOIS

1.5-2.5 mm² METRIC NYLON INSULATED, FUNNELED ENTRY FORK TERMINAL

DRAWN BY	BDK	CHK'D	LM	SCALE	NONE	DRAWING NO.	A41518
----------	-----	-------	----	-------	------	-------------	--------