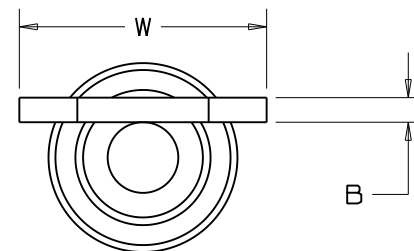
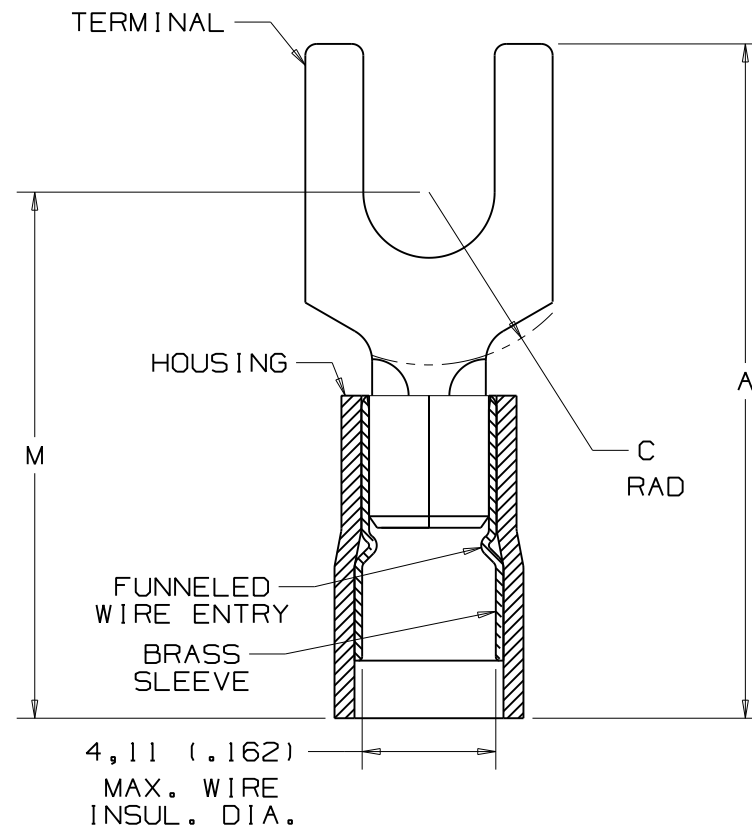


PART NUMBER	STUD SIZE	WIRE RANGE mm ²	DIMENSIONS mm				
			A ^{±.76} (.03)	W ^{±.25} (.01)	C ^{MIN}	B ^{±.25} (.01)	M ^{±.76} (.03)
PMNF2-3F	M3	1,5-2,5 (16-14)	19,79 (.78)	5,89 (.23)	5,05 (.20)	,81 (.03)	16,23 (.64)
PMNF2-4F	M4	1,5-2,5 (16-14)	21,34 (.84)	7,90 (.31)	5,89 (.23)	,81 (.03)	17,12 (.67)
PMNF2-5F	M5	1,5-2,5 (16-14)	21,77 (.86)	8,59 (.34)	6,38 (.25)	,81 (.03)	17,63 (.69)
PMNF2-6F	M6	1,5-2,5 (16-14)	26,14 (1.03)	11,18 (.44)	8,46 (.33)	,81 (.03)	19,79 (.78)



NOTES:

- USED FOR:
 - A. 600V MAX. VOLTAGE RATING
 - B. 105°C (221°F) MAX. TEMP. RATING
 - C. SOLID & STRANDED COPPER WIRE
- SEE www.panduit.com FOR PART NUMBER SUFFIX DESIGNATION FOR PACKAGE SIZE.
- MATERIAL:
 - A. STAMPING: COPPER, TIN PLATED
 - B. HOUSING: NYLON, BLUE
 - C. SLEEVE: BRASS, TIN PLATED
- WIRE STRIP LENGTH: $5,6^{+,8}_{-0}$ ($7/32^{+1/32}_{-0}$)
- INSTALLATION TOOLS: CT-1550, CT-2550 WITH CT-2550CH CRIMP HEAD
- DIMENSIONS IN BRACKETS ARE IN INCHES OR AWG



N41518BA/05

PANDUIT

CORP.

TINLEY PARK, ILLINOIS

1,5-2,5 mm² METRIC NYLON INSULATED,
FUNNELED ENTRY FORK TERMINAL

REV	DATE	BY	CHK	DESCRIPTION	ECN #	PM	CUST
05	12/20/11	FS		Obsolete installation tools removed, UL information clarified, general dimensional updates.			

DRAWN BY	BDK	CHK'D	LM	SCALE	NONE	DRAWING NO.	A41518
----------	-----	-------	----	-------	------	-------------	--------