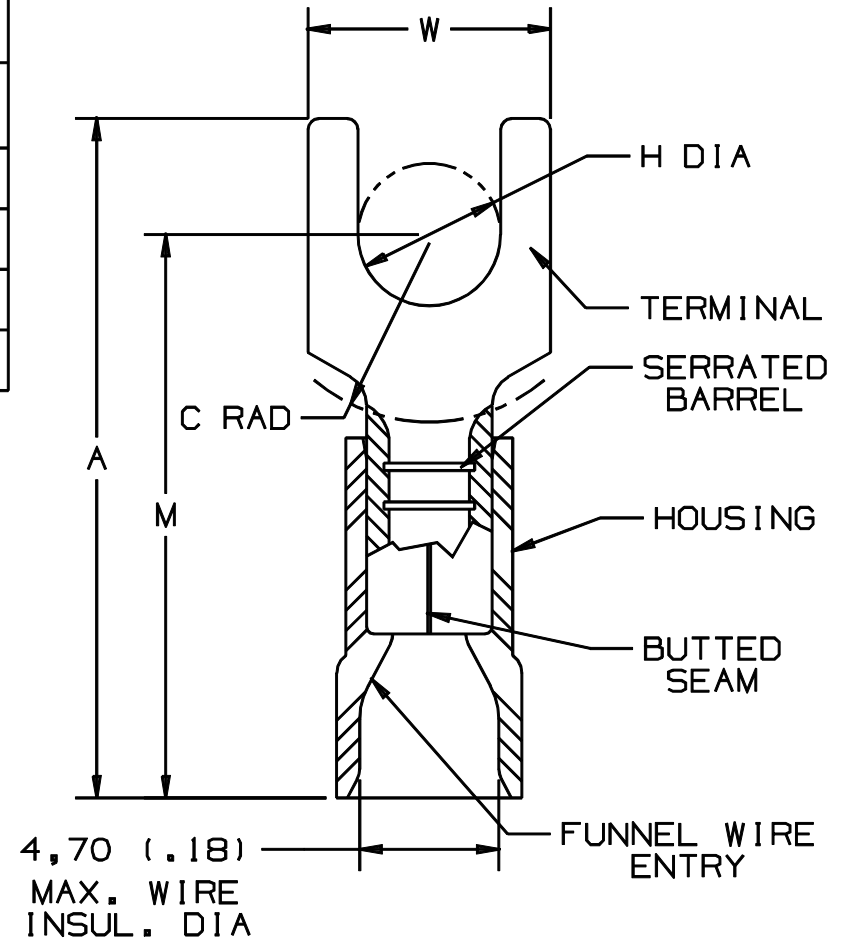


THIS COPY IS PROVIDED ON A RESTRICTED BASIS AND IS NOT TO BE USED IN ANY WAY DETRIMENTAL TO THE INTERESTS OF PANDUIT CORP.

PANDUIT PART #		STUD SIZE	DIMENSIONS mm				
PREFIX	PK		A ±0,51	W ±0,25	C ±0,38	M ±0,51	H ±0,25
PMV2-3FB	-C -M	M3	21,34 (.84)	5,84 (.23)	4,83 (.19)	17,78 (.70)	3,30 (.13)
PMV2-4FB	-C -M	M4	22,86 (.90)	7,87 (.31)	5,84 (.23)	18,80 (.74)	4,57 (.18)
PMV2-5FB	-C -M	M5	23,37 (.92)	8,64 (.34)	6,10 (.24)	19,30 (.76)	5,33 (.21)
PMV2-6FB	-C -M	M6	27,69 (1.09)	11,18 (.44)	8,13 (.32)	21,34 (.84)	6,60 (.26)

NOTES:

- USED FOR:
 - A. 600V MAX. VOLTAGE RATING
 - B. 105°C (221°F) MAX. TEMP. RATING
 - C. 1,5-2,5mm² (#16-14 AWG), STRANDED COPPER WIRE
- MATERIAL:
 - A. STAMPING - 0,81mm (.03) THK COPPER, TIN PLATED
 - B. HOUSING - BLUE VINYL
- DIMENSIONS IN BRACKETS ARE IN INCHES
- PACKAGE QTY:
 - A. STD: C=100
 - B. BULK: M=1000
- WIRE STRIP LENGTH: 7,9 ^{+0,8}/₋₀ (5/16 ^{+1/32}/₋₀)
- INSTALLATION TOOLS: REF. DWGS. A41522, A41523, A41524, A41525



A41425_01

							PANDUIT CORP.		TINLEY PARK, ILLINOIS		
01	10/97	TM		CHANGED DECIMAL POINTS TO COMMAS					2PC. VINYL INSULATED METRIC FORKS 1,5-2,5mm ² BARREL		
00	10/91	BK	RS	RELEASED			00687	LA	KS		
REV	DATE	BY	CHK	DESCRIPTION	ECN #	CUST	PM	DRAWN BY	CHK'D	SCALE	DRAWING NO.
								BDK	RS	NONE	A41425