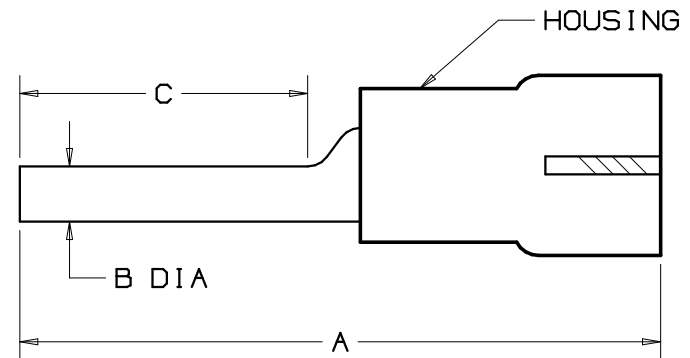
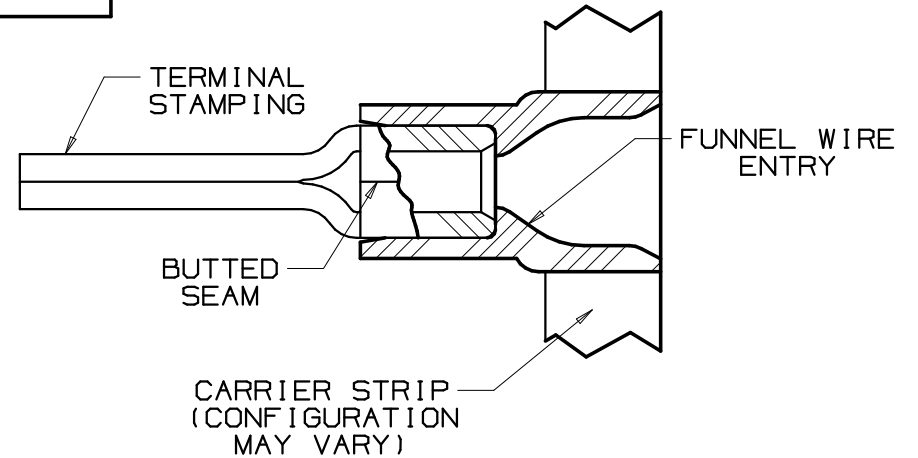
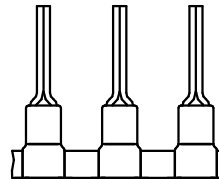


THIS COPY IS PROVIDED ON A RESTRICTED BASIS AND IS NOT TO BE USED IN ANY WAY DETRIMENTAL TO THE INTERESTS OF PANDUIT CORP.

PANDUIT PART #		WIRE RANGE mm ² (AWG)	DIMENSIONS mm				HOUSING COLOR
PREFIX	PK		A ± $\begin{matrix} .8 \\ (.03) \end{matrix}$	B ± $\begin{matrix} .3 \\ (.01) \end{matrix}$	C MIN	MAX WIRE INSUL DIA	
PMV1-P12B	-3K	.5-1.5 (22-18)	22.6 (.89)	2.0 (.08)	10.0 (.39)	3.8 (.15)	RED
PMV2-P12B	-3K	1.5-2.5 (16-14)	22.6 (.89)	2.0 (.08)	10.0 (.39)	4.3 (.17)	BLUE

NOTES:

- USED FOR:
 - A. 600V MAX VOLTAGE RATING
 - B. 105°C (221°F) MAX TEMP RATING
 - C. SOLID OR STRANDED COPPER WIRE
- WIRE STRIP LENGTH: $6.3^{+.08}_{-0}$ (1/4^{+1.32}₋₀)
- MATERIAL:
 - A. STAMPING: TIN PLATED COPPER
 - B. HOUSING: VINYL
- PACKAGING:
 - A. BULK ONLY: -3K = 3000 PCS CONTINUOUSLY MOLDED ON REEL
- DIMENSIONS IN BRACKETS ARE IN INCHES



		PANDUIT PRESS					
		CP-851 <i>DISCONTINUED</i>	CP-860 <i>DISCONTINUED</i>	CP-861	CP-862	CP-871 60HZ	CP-871/E 50HZ
APPLICATORS	CA-800		X	X			
	CA-800EZ	X				X	X
	CA9				X	X	X

A41620_01

PANDUIT CORP.

TINLEY PARK, ILLINOIS

REELSMART™, TERMO™
METRIC VINYL INSULATED, FUNNEL WIRE
ENTRY PIN TERMINALS

REV	DATE	BY	CHK	DESCRIPTION	ECN #	CUST	PM
01	3/06	DAW	DAW	ADDED PANDUIT PRESS & APPLICATOR CHART	TRO0083		
00	9/97	JKD	WJB	RELEASED	6194	LA	DBH

DRAWN BY	CHK'D	SCALE	DRAWING NO.
T SMA		NONE	A41620