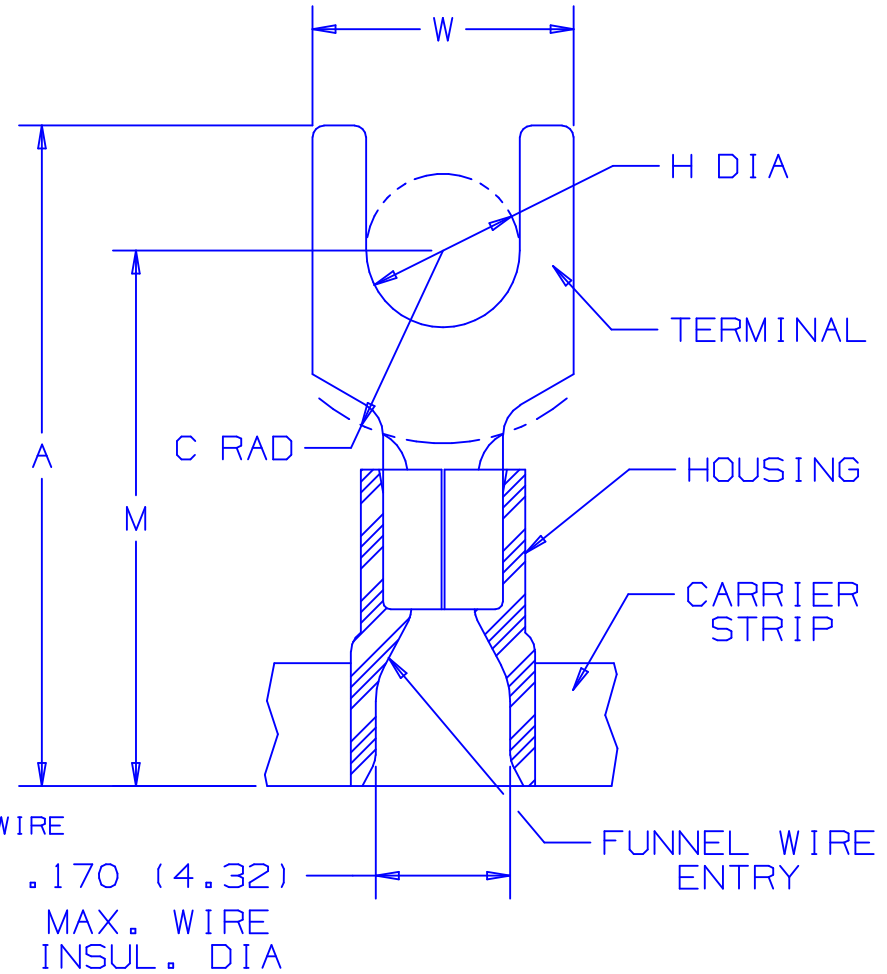


PANDUIT PART NUMBER	STUD SIZE	DIMENSIONS in.				
		A ±.03	W ±.01	C ±.02	M ±.03	H ±.01
PV14-6FB-3K	#6	.78 (19.81)	.28 (7.11)	.19 (4.83)	.64 (16.26)	.15 (3.81)
* PV14-6FNB-3K	#6	.78 (19.81)	.24 (6.10)	.19 (4.83)	.64 (16.26)	.15 (3.81)
PV14-8FB-3K	#8	.84 (21.34)	.31 (7.87)	.23 (5.84)	.68 (17.27)	.17 (4.32)
PV14-10FB-3K	#10	.86 (21.84)	.34 (8.64)	.24 (6.10)	.70 (17.78)	.20 (5.08)
* PV14-10FNB-3K	#10	.86 (21.84)	.31 (7.87)	.24 (6.10)	.70 (17.78)	.20 (5.08)
PV14-14FB-3K	1/4"	1.03 (26.16)	.44 (11.18)	.32 (8.13)	.78 (19.81)	.27 (6.86)

* ONLY C.S.A. CERTIFIED

NOTES :

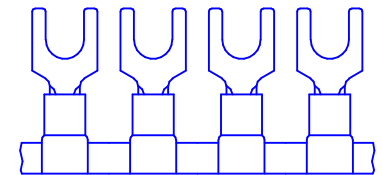
- UL LISTED AND CSA CERTIFIED FOR :
 A. 600 V MAX. VOLTAGE RATING
 B. 221°F (105°C) MAX. TEMP. RATING
 C. #16-14 AWG (1.5-2.5 mm²) SOLID OR STRANDED, COPPER WIRE
- PACKAGE QTY. :-3K = 3000 PCS.
 CONTINUOUS MOLDED CARRIER STRIP
- MATERIAL :
 A. STAMPING - .03" THK COPPER, TIN PLATED
 B. HOUSING - BLUE VINYL
- DIMENSIONS IN BRACKETS ARE IN MILLIMETERS
- INSTALLATION TOOLS :
 A. PRESSES - CP-851, CP-860, CP-861, CP-862
 B. APPLICATOR - CA-800, CA9
 C. DIE INSERTS - CD-800-2, CD9-2A
- WIRE STRIP LENGTH: 1/4 ^{+1/32}₀ (6.4 ⁺⁸₀)



LISTED
587H
E52164



CERTIFIED
LR31212



A41080_04

04	01/05	KLFU		ADDED: CP-862, CA9 & CD9-2A,2B TO NOTE 5			
03	1/01	KMD	SKB	CAD FILE SPEC. WAS N41080AA_PCD_02	08937	JAC	CCH
02	1/96	ED	RK	REV.S TO NOTES AND TABLE/ FILESPEC WAS: A41080A.PRT	03876	LA	TFKE
01	12/87	DSM	--	REDRAWN ON CAD	----	LA	KS
REV	DATE	BY	CHK	DESCRIPTION	ECN #	CUST	PM

PANDUIT CORP.

TINLEY PARK, ILLINOIS

TERMO 2PC. CONTINUOUSLY MOLDED VINYL INSULATED, #16-14 BARREL, FORKS

DRAWN BY DSM CHK'D RAKL SCALE NONE DRAWING NO. A41080