



PW100F-C20



- Patented installation tool with 180° opening allows easy loading of maximum bundle diameters to speed installation, providing the lowest installed cost
 - Slot pattern provides improved flexibility and abrasion protection in any application
 - Large overlap accommodates a wide range of bundle diameters
 - Unique wall design provides for easy wire or cable breakouts
 - Innovative design maintains uniform bundle protection in dynamic applications
 - Packaged on a reel for easy handling and dispensing of the product
 - * Order number of reels required.
- ‡ Diameter can be further reduced with the use of cable ties.
- ** Flame retardant products are manufactured from a material that is rated UL94V-0.

▪ Part Number	PW100F-C20
▪ RoHS Compliancy Status	Compliant
▪ Part Description	1" <i>Pan-Wrap</i> ™ Split Harness Wrap
▪ Material	Polyethylene
▪ Color	Black
▪ Length Per Reel (ft.)	100
▪ Length Per Reel (m)	30.5
▪ Max. Bundle Diameter (In.)	1.13
▪ Max. Bundle Diameter (mm)	28.6
▪ Min. Bundle Diameter (In.)	.81
▪ Min. Bundle Diameter (mm)	20.6
▪ Nominal I.D. (In.)	1.00
▪ Nominal I.D. (mm)	25.4
▪ Pricing Description	1"(25.4mm) Panwrap - Black - 100 ft. per roll
▪ Temperature Range	-40°F to 122°F (-40°C to 50°C)
▪ Min. Order UOM	RL
▪ Min. Order Qty.	1
▪ BOM Qty. (# of Pkgs.)	

THIS COPY IS PROVIDED ON A RESTRICTED BASIS AND IS NOT TO BE USED IN ANY WAY DETRIMENTAL TO THE INTERESTS OF PANDUIT CORP.

PANDUIT PART NO. *	NOMINAL BUNDLE DIAMETER	MAXIMUM RECOMMENDED BUNDLE DIAMETER	DIMENSIONS			WEIGHT lbs / 100 (g) / ft.
			"A" (Ref)	"B" (Ref)	"C"	
PW50_----	0.50 (12.70)	0.55 (13.97)	0.47 (11.94)	0.125 (3.18)	0.032 (0.81)	2.01 (910.00)
PW75_----	0.75 (19.05)	0.81 (20.57)	0.72 (18.29)		0.035 (0.89)	2.87 (1301.81)
PW100_----	1.00 (25.40)	1.125 (28.58)	0.81 (20.57)		0.040 (1.02)	4.47 (2027.6)
PW150_----	1.50 (38.10)	1.625 (41.28)	1.125 (28.58)		0.042 (1.07)	7.65 (3469.9)

NOTES:

- * 1. SEE CURRENT PRICE SHEET FOR PART NUMBER SUFFIX DESIGNATION FOR PACKAGE SIZE.
- 2. DIMENSION "A" IS STATIC INSIDE DIAMETER. DIMENSION "B" IS WIDTH OF BREAKOUT SLOTS. DIMENSION "C" IS WALL THICKNESS.

3. PANWRAP IS OFFERED IN THE FOLLOWING MATERIAL:

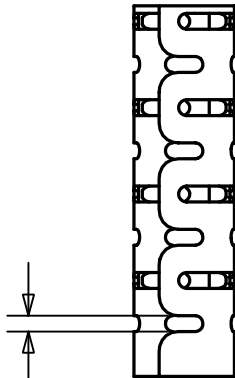
SAMPLE PART NUMBER:
PW75F-CO

- 20 - NATURAL IN COLOR
- 20 - BLACK

- Q - 25 feet (7.62 meters)
- L - 50 feet (15.24 meters)
- C - 100 feet (30.48 meters)
- T - 200 feet (60.96 meters)

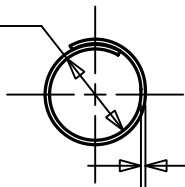
(REFER TO CURRENT PRODUCT OFFERING FOR OPTIONAL STANDARD PACKAGING QUANTITIES)

F - POLYETHYLENE

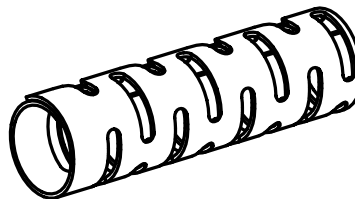


"B"

"A" \varnothing



"C"



DIMENSIONS IN BRACKETS ARE METRIC [mm]

CAD FILENAME/LAYERS G02508BH_PB_PANWRAP_00

PANDUIT

CORP. TINLEY PARK, ILLINOIS

PAN-WRAP
(PW_--_--_)

UNLESS OTHERWISE SPECIFIED,
DIMENSIONAL TOLERANCES ARE:
(.X) ±0.05 (1.3) (.XXX) ±0.010 (0.25)
(.XX) ±0.02 (0.5) ANGLES ± 5°

UNLESS OTHERWISE SPECIFIED,
ALL DIMENSIONS ARE GIVEN
IN INCHES, THIRD ANGLE PROJECTION.

DRAWN BY JAD

MAT'L:

SCALE NONE

DATE 11/5/04

SEE NOTE 3

DRAWING NO.

GB2508BH

DWG
SIZE
A

R	11/5/04	JAD		INITIAL RELEASE, REPLACES G82508BA AND G82508BG	G82508BH	R			
REV	DATE	BY	CHK	DESCRIPTION	ECN	- R	CUST	SUP	