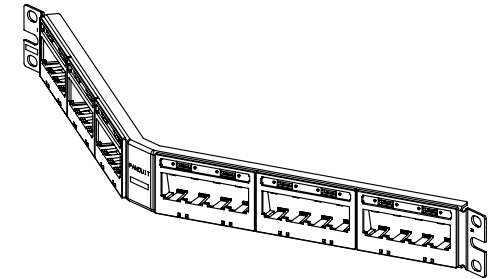
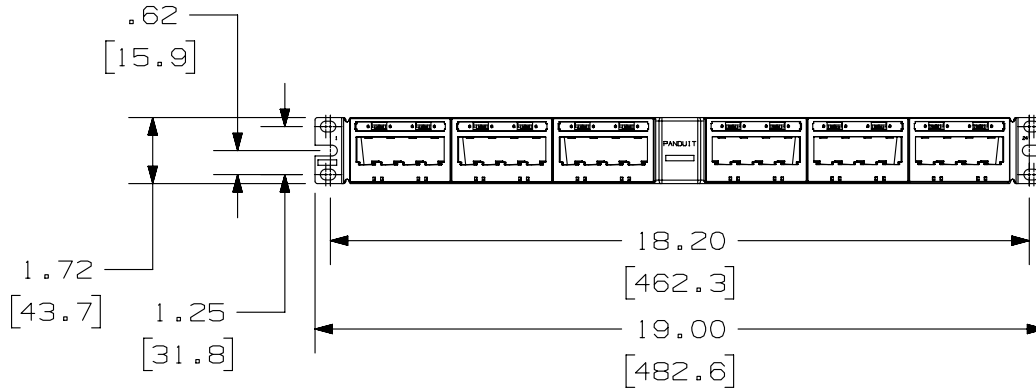
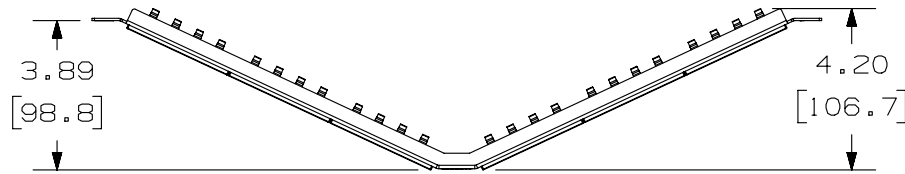


THIS COPY IS PROVIDED ON A RESTRICTED BASIS AND IS NOT TO BE USED IN ANY WAY DETRIMENTAL TO THE INTERESTS OF PANDUIT CORP.

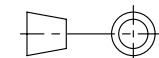
| | |
|--------------|-------------------------------------|
| PANDUIT P/N | WEIGHT |
| UICMPPA24BLY | .57 LB/EACH PC (257.0 g/EACH PC) |

NOTES:

- SEE CURRENT CATALOG FOR ADDITIONAL PART NUMBER SUFFIXES TO INDICATE COLOR AND OR PACKAGE QUANTITY.
- SEE CATALOG FOR COMPLETE LIST OF PARTS APPLICABLE FOR USE WITH THIS PART.
- DIMENSIONS IN PARENTHESES ARE IN METRIC.
- PART INCLUDES:
 - 1- METAL STAMPING
 - 6- 4 POSITION FACEPLATE WITH 1 LABEL POCKET (ASSEMBLED TO METAL STAMPING)
 - 6- CLEAR LABEL COVER
 - 1- SCREW KIT (INCLUDES FOUR #12-24 SCREWS)
 - 1- SCREW KIT (INCLUDES FOUR M6 SCREWS)
- LABELS SOLD SEPARATELY.



| | | | |
|---|--|---------------------------------|--|
| PART NUMBER | | UICMPPA24BLY | |
| TITLE | | | |
| MINI-COM ULTIMATE ID ANGLED 24 PORT MODULAR PATCH PANEL WITH 1 LABEL POCKET PER FACEPLATE | | | |
| CUSTOMER DRAWING | | | |
| ITEM REVISION NAME | | M02479AR/03 | |
| DATASET FILE NAME | | M02479AR_DC18/03A | |
| UNLESS OTHERWISE SPECIFIED, DIMENSIONAL TOLERANCES ARE: IN [mm] | | MATERIAL: | |
| .x ± .xx ± .03 [.8] | | PANEL: C.R.S. FACEPLATE: ABS | |
| .xxx ± .010 [.3] | | DRAWING NUMBER: | |
| ANGLES ± | | 02479-018 | |
| THIRD ANGLE PROJECTION | | SHT 1 OF 1 | |
| DRAWN BY | DATE | CHK | SCALE |
| JSP | 4-19-06 | MJD | NONE |
| REV | DATE | BY | CHK |
| 1 | 5-8-14 | BJN | JSP |
| BY | CHK | APR | DESCRIPTION |
| BJN | JSP | MMR | REVISED & REDRAWN PREVIOUS REVISIONS REMVD FOR CLARITY |
| DATE | DESCRIPTION | ECN | |
| 5-8-14 | REVISED & REDRAWN PREVIOUS REVISIONS REMVD FOR CLARITY | 02479-018 | |



D10100DA/14

2

1

2

1