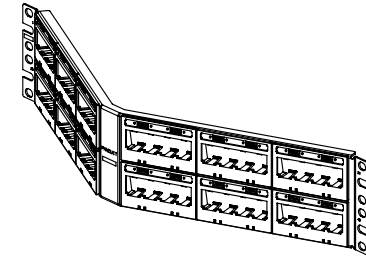
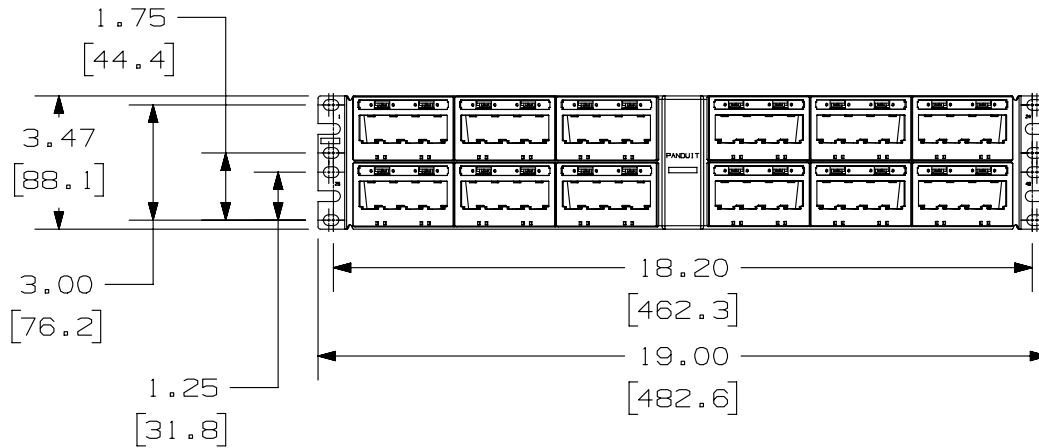
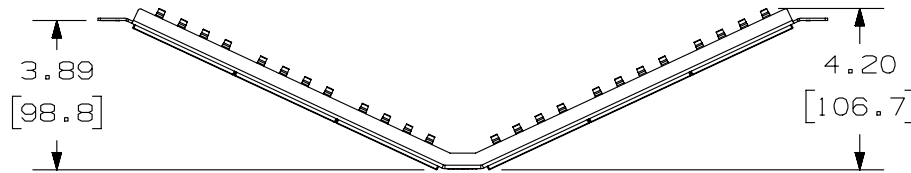


THIS COPY IS PROVIDED ON A RESTRICTED BASIS AND IS NOT TO BE USED IN ANY WAY DETRIMENTAL TO THE INTERESTS OF PANDUIT CORP.

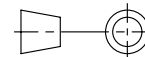
PANDUIT P/N	WEIGHT
UICMPPA48BLY	.91 LB/EACH PC (412.3 g/EACH PC)

NOTES:

1. SEE CURRENT CATALOG FOR ADDITIONAL PART NUMBER SUFFIXES TO INDICATE COLOR AND OR PACKAGE QUANTITY.
2. SEE CATALOG FOR COMPLETE LIST OF PARTS APPLICABLE FOR USE WITH THIS PART.
3. DIMENSIONS IN PARENTHESES ARE IN METRIC.
4. PART INCLUDES:
 - 1- METAL STAMPING
 - 12- 4 POSITION FACEPLATE WITH 1 LABEL POCKET (ASSEMBLED TO METAL STAMPING)
 - 12- CLEAR LABEL COVER
 - 1- SCREW KIT (INCLUDES FOUR #12-24 SCREWS)
 - 1- SCREW KIT (INCLUDES FOUR M6 SCREWS)
5. LABELS SOLD SEPARATELY.



PART NUMBER		UICMPPA48BLY	
TITLE			
MINI-COM ULTIMATE ID ANGLED 48 PORT MODULAR PATCH PANEL WITH 1 LABEL POCKET PER FACEPLATE			
CUSTOMER DRAWING			
ITEM REVISION NAME		M02479AT/03	
DATASET FILE NAME		M02479AT_DC20/03A	
UNLESS OTHERWISE SPECIFIED, DIMENSIONAL TOLERANCES ARE: IN [mm]		MATERIAL:	
.X ± .XX ± .03 [.8]		PANEL: C.R.S. FACEPLATE: ABS	
.XXX ± .010 [.3]		DRAWING NUMBER:	
ANGLES ±		02479-020	
THIRD ANGLE PROJECTION		SHT 1 OF 1	
DRAWN BY	DATE	CHK	SCALE
JSP	4-19-06	MJD	NONE
REV	DATE	BY	CHK
1	5-8-14	BJN	JSP
APR	DESCRIPTION		ECN
	REVISED & REDRAWN PREVIOUS REVISION REMVD FOR CLARITY		02479-020



D10100DA/14