



**Search Results**

- Evaluate
  - FAQ's
- Design a Solution
  - Part Drawings
  - PDF-Next Generat ..
- How to Buy
  - Bill of Material
  - Favorite Products List
  - Locate Distributor

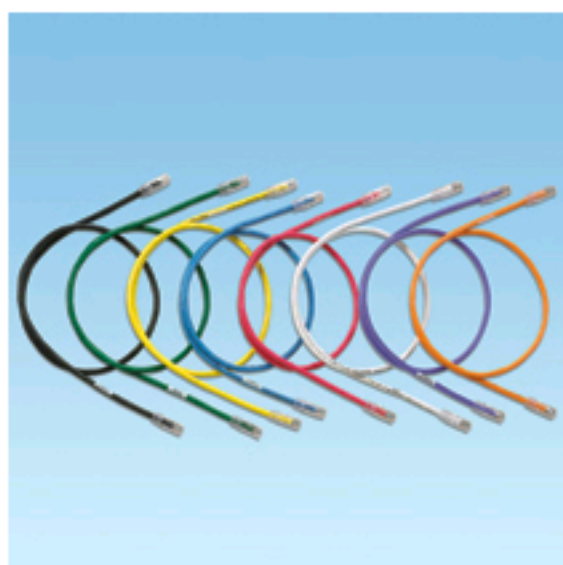
Home > Product On-Line Catalog > Search Results >

Current refinements (click  to remove) Search Tips

Text Search: 'UTP6A400R'

Your search criteria matched only one product, shown below

**UTP6A400R**



- Exceed requirements of ANSI/TIA-568-C.2 Category 6A, IEEE 802.3an-2006, and ISO 11801 Class E<sub>A</sub> channel standards
- Meet requirements of IEEE 802.3af and IEEE 802.3at for PoE applications
- Each patch cord is 100% performance tested and wired to T568B
- Constructed of TX6A™ 10Gig™ 24 AWG stranded copper cable (nominal cable diameter is 0.280 inches) and TX6™ PLUS Modular Plugs for superior performance
- Plug meets all applicable ANSI/TIA-968-A requirements and exceeds IEC 60603-7 specifications
- Slender strain relief boot provides easy access in high density applications
- Plug uses an integral pair manager to optimize performance and consistency by reducing untwisting of conductors within the plug
- Plug performance in center of TIA/EIA component range, ensuring interoperability and 10GBASE-T Ethernet channel performance
- Labels on patch cords provide identification of performance level, length, and quality control

**number**

- Patented tangle free latch prevents snags and provides easy release, saving time on frequent moves, adds, and changes
- Optional Patch Cord Color Bands snap on and off individual patch cables offering endless color-coding options

|                                |   |
|--------------------------------|---|
| ▪ Part Number                  | UTP6A400R   |
| ▪ RoHS Compliancy Status       | Compliant   |
| ▪ Part Description             | Category 6A, 10 Gb/s UTP patch cord with TX6™ PLUS Modular Plugs on each end. |
| ▪ Product Type                 | Copper Patch Cord   |
| ▪ Color                        | Orange  |
| ▪ Length (ft.)                 | 40  |
| ▪ Length (m)                   | 12.19   |
| ▪ Boot Color                   | Clear   |
| ▪ Cable Color                  | Orange  |
| ▪ Cable Type                   | UTP   |
| ▪ CE Compliant                 | No  |
| ▪ Connector 1 Type             | RJ45 8(8)   |
| ▪ Connector 2 Type             | RJ45 8(8)   |
| ▪ Flammability Rating          | CM  |
| ▪ Performance Level            | Category 6A   |
| ▪ Pricing Description          | Copper Patch Cord, Cat 6A, Orange UTP Cable, 40 Feet                          |
| ▪ Termination End 1            | Modular Plug  |
| ▪ Termination End 2            | Modular Plug  |
| ▪ Wiring Scheme                | T568B   |
| ▪ Min. Order UOM               | PC  |
| ▪ Min. Order Qty.              | 1   |
| ▪ BOM Qty. (# of Pkgs.)        | <input type="text" value="0"/>  |
| ▪ Add to Favorite Product List | <input type="checkbox"/>  |

Please [register](#) to utilize the 'Bill of Materials', 'Submit Quotes' and 'Favorite Product List' features.