

**Search Results**

- Evaluate
  - FAQ's
- Design a Solution
  - Part Drawings
  - PDF-TX6A - SD 10 ..
- How to Buy
  - Bill of Material
  - Favorite Products List
  - Locate Distributor

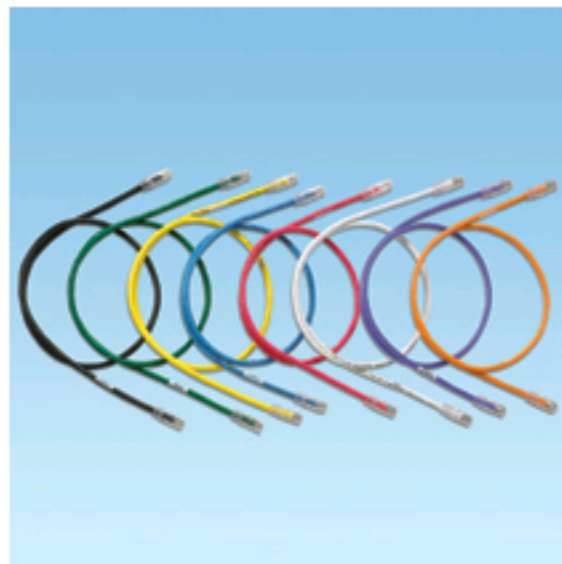
Home > Product On-Line Catalog > Search Results >

Current refinements (click  to remove) Search Tips [?](#)

Text Search: 'UTP6ASD14'

Your search criteria matched only one product, shown below

**UTP6ASD14**



- Exceed requirements of ANSI/TIA-568-C.2 Category 6A, IEEE 802.3an-2006, and ISO 11801 Class E<sub>A</sub> channel standards
- Meet requirements of IEEE 802.3af and IEEE 802.3at for PoE applications
- MaTriX Technology provides superior suppression of both PSANEXT and PSAACR-F and improves the installation flexibility by allowing cable combing in existing pathways without compromising performance
- Each patch cord is 100% performance tested and wired to T568B
- Constructed of TX6A-SD™ 10Gig™ 26 AWG stranded copper cable (nominal cable diameter is .240 in.( 6.1 mm)) and TX6™ PLUS Modular Plugs for superior performance
- Plug meets all applicable ANSI/TIA-968-A requirements and exceeds IEC 60603-7 specifications
- Slender strain relief boot provides easy access in high density applications
- Plug uses an integral pair manager to optimize performance and consistency by reducing untwisting of conductors within the plug

- Plug performance in center of TIA/EIA component range, ensuring interoperability and 10GBASE-T Ethernet channel performance
- Labels on patch cords provide identification of performance level, length, and quality control number
- Patented tangle free latch prevents snags and provides easy release, saving time on frequent moves, adds, and changes
- Optional Patch Cord Color Bands snap on and off individual patch cables offering endless color-coding options
- Optional RJ45 Plug Lock-In Device blocks unauthorized removal of cable, IP phone, other networking equipment or critical connection

Note: The cable utilizes 26 AWG conductors which does not meet the 24 to 22 AWG conductor size of horizontal cable in ANSI/TIA-568-C.2.5.3, resulting in increased attenuation which de-rates the maximum channel distance to 70 meters (229 feet)

|                                |  |
|--------------------------------|--|
| • Part Number                  | UTP6ASD14  |
| • RoHS Compliancy Status       | Compliant  |
| • Part Description             | Category 6A (SD), 10 Gb/s UTP patch cord with TX6™ PLUS Modular Plugs on each end. |
| • Product Type                 | Copper Patch Cord  |
| • Color                        | Off White  |
| • Length (ft.)                 | 14   |
| • Length (m)                   | 4.27   |
| • Boot Color                   | Clear  |
| • Cable Color                  | Off White  |
| • Cable Type                   | UTP  |
| • CE Compliant                 | No   |
| • Connector 1 Type             | RJ45 8(8)  |
| • Connector 2 Type             | RJ45 8(8)  |
| • Flammability Rating          | CM   |
| • Performance Level            | Category 6A  |
| • Pricing Description          | Copper Patch Cord, Cat 6A (SD), Off White UTP Cable, 14 Feet                       |
| • Termination End 1            | Modular Plug   |
| • Termination End 2            | Modular Plug   |
| • Wiring Scheme                | T568B  |
| • Min. Order UOM               | PC   |
| • Min. Order Qty.              | 1  |
| • BOM Qty. (# of Pkgs.)        | <input type="text" value="0"/>   |
| • Add to Favorite Product List | <input type="checkbox"/>   |

Please [register](#) to utilize the 'Bill of Materials', 'Submit Quotes' and 'Favorite Product List' features.