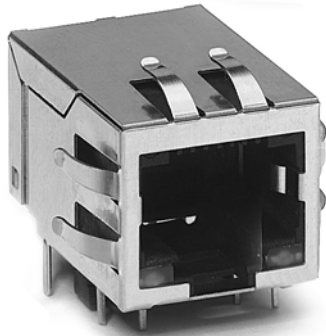


# PULSEJACK™ THROUGH HOLE, TAB DOWN RJ-45 JACK WITH INTEGRATED MAGNETICS



For 10/100Base-TX NIC Applications



- ⦿ Magnetic designs to support every PHY
- ⦿ Meet or exceed IEEE 802.3 and ANSI X3.263 standards including 350  $\mu$ H min OCL with 8 mA bias
- ⦿ Patented Interlock Base construction for high reliability
- ⦿ High performance for maximum EMI suppression
- ⦿ Minimum 1500 Vrms isolation per IEEE 802.3 requirement
- ⦿ Independent connector evaluation completed (Contech Research, Massachusetts)

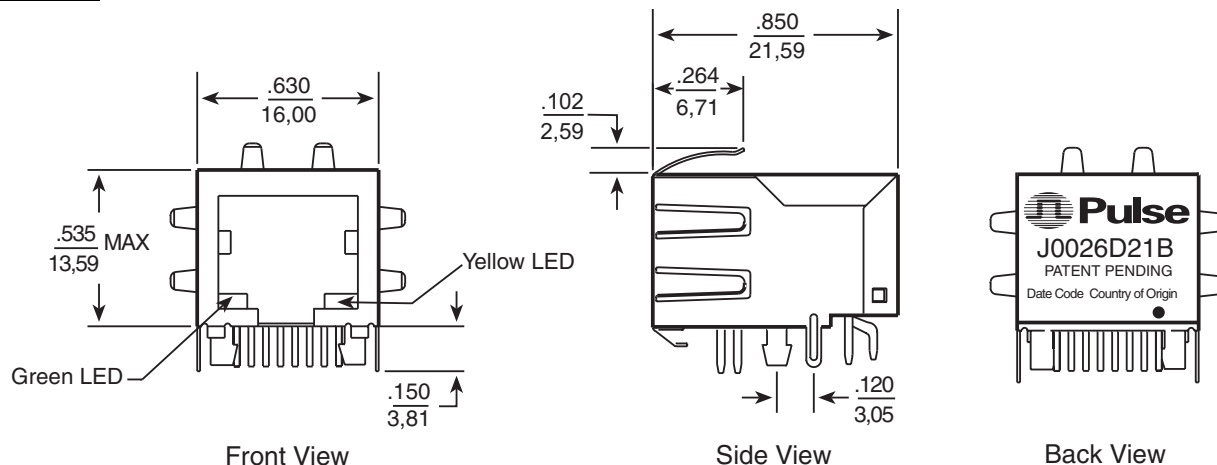
## Electrical Specifications @ 25°C — Operating Temperature 0°C to +70°C

Part Number	Insertion Loss (dB MAX)	Return Loss (dB MIN @100 $\Omega$ )				Crosstalk (dB MIN)			Common Mode Rejection (dB MIN)			Hi-pot (VRMS MIN)
	0.1 - 100 MHz	1 - 30 MHz	40 MHz	50 MHz	60 - 80 MHz	30 MHz	60 MHz	100 MHz	30 MHz	60 MHz	100 MHz	
J0026D21B	-1.0	-18	-16	-14	-12	-50	-40	-35	-35	-30	-25	1500

Note: Both transmit and receive channels meet IEEE 802.3 specifications.

## Mechanical

### J0026D21B



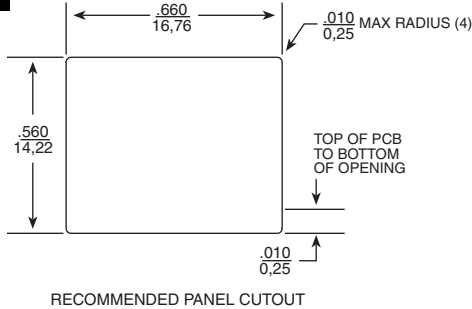
# PULSE JACK™ THROUGH HOLE, TAB DOWN RJ-45 JACK WITH INTEGRATED MAGNETICS



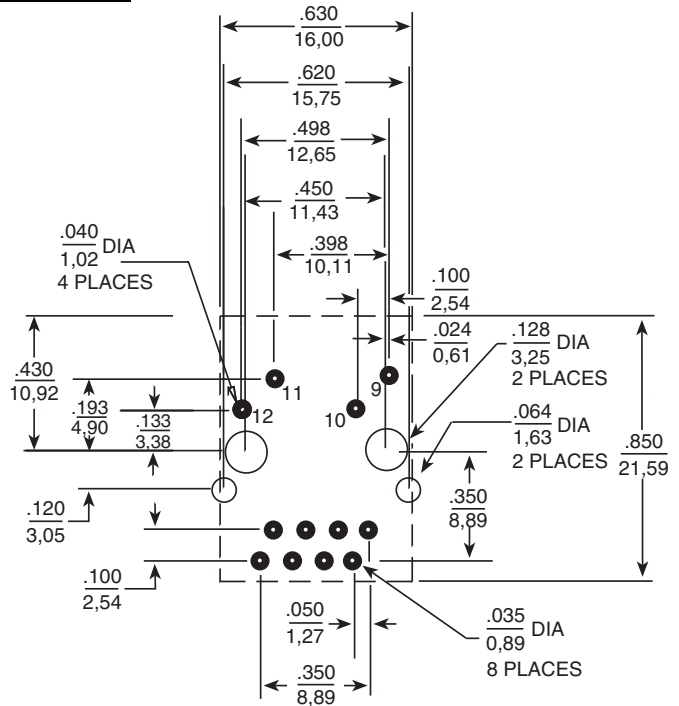
## For 10/100Base-TX NIC Applications

### Mechanicals

#### J0026D21B



#### “D” Shield



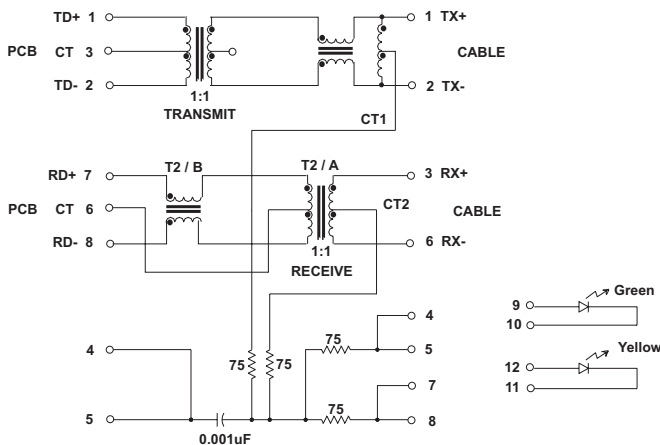
#### Standard LED Wave Length Forward\* V(MAX) (TYP)

Standard LED	Wave Length	Forward* V(MAX)	(TYP)
Yellow	585 nm	2.5 V	2.1 V
Green	565 nm	2.5 V	2.2 V

\* With a forward current of 20 mA

### Schematic

#### J0026D21B



### Family Options

- ⊕ Magnetics optimized for all PHYs
- ⊕ Various turns ratios and number of cores available
- ⊕ Includes high voltage caps and internal SMT components (resistors)
- ⊕ Chip-side pinout optimized to match specific PHYs to simplify PCB layout
- ⊕ Shield options (GND pin position, EMC tab configuration)
- ⊕ LED options (color, integrated resistor, bi-color)

### For More Information :

#### Corporate (U.S.A.)

12220 World Trade Drive  
San Diego, CA 92128  
Tel: 858 674 8100  
FAX: 858 674 8262  
Quick-Facts: 858 674 9672  
http://www.pulseeng.com

#### U.K. (Northern Europe)

1 & 2 Huxley Road  
The Surrey Research Park  
Guildford, Surrey GU2 5RE  
United Kingdom  
Tel: 44 1483 401700  
FAX: 44 1483 401701

#### France (Southern Europe)

Zone Industrielle  
F-39270  
Orgelet  
France  
Tel: 33 3 84 35 04 04  
FAX: 33 3 84 25 46 41

#### Taiwan (Northern Asia)

3F-4, No. 81, Sec. 1  
HsinTai Wu Road  
Hsi-Chih, Taipei Hsien  
Taiwan  
Tel: 886 2 2698 0228  
FAX: 886 2 2698 0948

#### Singapore (Southern Asia)

150 Kampong Ampat  
#07-01/02  
KA Centre  
Singapore 368324  
Tel: 65 287 8998  
FAX: 65 280 0080

#### Distributor

Performance warranty of products offered on this data sheet is limited to the parameters specified. Data is subject to change without notice. Other brand and product names mentioned herein may be trademarks or registered trademarks of their respective owners.

Printed on recycled paper. ©2000, Pulse Engineering, Inc.

**PRELIMINARY J403.P (2/00)**