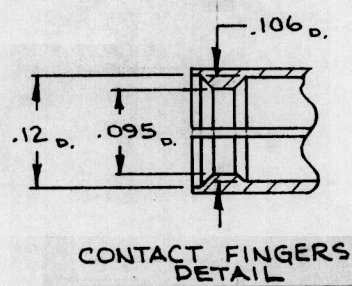


PROPRIETARY INFORMATION  
NOT TO BE RELEASED  
WITHOUT WRITTEN PERMISSION  
FROM AN AUTHORIZED  
REPRESENTATIVE OF  
APPLIED ENGINEERING PRODUCTS

DASH No.	CABLE DIA.	"A" DIA.
-010	.085	.089
-011	.047	.050
-021	.056	.060



NOTES: CONFORMS TO AEP 7000 SERIES CONNECTORS

MATERIAL:

1. BODY & CONTACT = BERYLLIUM COPPER PER QQ-C-530
2. SLEEVE & BACKNUT - BRASS 1/2 HARD PER QQ-B-626, ALLOY 360
3. INSULATOR = TEFLON VIRGIN WHITE PER ASTM-D1710

FINISH:

1. CONTACT = GOLD PLATE PER MIL-G-45204, TYPE II, CLASS 1, GRADE C OVER COPPER STRIKE PER MIL-C-14550
2. BODY, SLEEVE, & BACKNUT = GOLD PLATE PER MIL-G-45204, TYPE I, CLASS 0, GRADE C OVER COPPER STRIKE PER MIL-C-14550

AEP 7000 SERIES  
STRAIGHT SOLDER TYPE CABLE PLUG  
FOR SEMI-RIGID CABLE

APPLIED ENGINEERING PRODUCTS

CODE IDENT. 19505

7202-1542-0XX

BRUNING 40-5020 74046