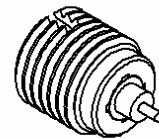
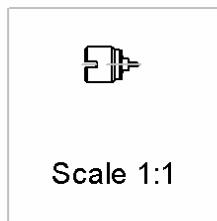
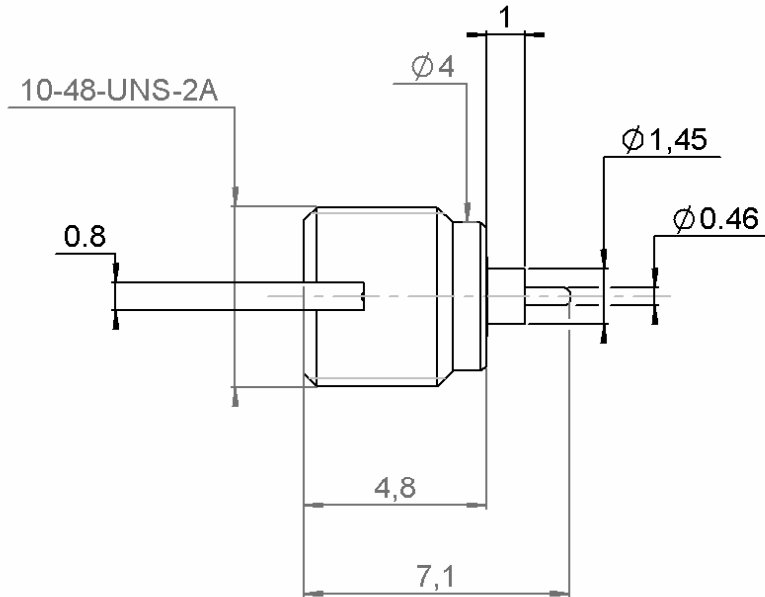


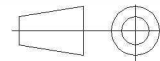
SCREW-ON MALE RECEPTACLE SMOOTH BORE

R222.561.701

Series : SMP



All dimensions are in mm.



COMPONENTS	MATERIALS	PLATINGS (µm)
BODY	STAINLESS STEEL	PASSIVATED.
CENTER CONTACT	BERYLLIUM COPPER	GOLD 1.27 OVER NICKEL 1.27
OUTER CONTACT	-	-
INSULATOR	PTFE	-
GASKET	-	-
OTHERS PARTS	-	-
-	-	-
-	-	-

Issue : 1202 B

In the effort to improve our products, we reserve the right to make changes judged to be necessary.



SCREW-ON MALE RECEPTACLE SMOOTH BORE

R222.561.701

Series : SMP

PACKAGING

SPECIFICATION

Standard	Unit	Other
100	'W' option	Contact us

ELECTRICAL CHARACTERISTICS

ENVIRONMENTAL

Impedance	50	Ω
Frequency	0-12	GHz
VSWR	1.3 + 0,0000	x F(GHz) Maxi
Insertion loss	0.12	\sqrt{F} (GHz) dB Maxi
RF leakage	- (NA)	- F(GHz)) dB Maxi
Voltage rating	335	Veff Maxi
Dielectric withstanding voltage	500	Veff mini
Insulation resistance	5000	M Ω mini

Operating temperature	-65/+165	$^{\circ}$ C
Hermetic seal		Atm.cm3/s
Panel leakage	NA	

OTHERS CHARACTERISTICS

Assembly instruction

Others :

MECHANICAL CHARACTERISTICS

Center contact retention		
Axial force – Mating end	6.8	N mini
Axial force – Opposite end	6.8	N mini
Torque	NA	N.cm mini
Recommended torque		
Mating	NA	N.cm
Panel nut	90	N.cm
Mating life	1000	Cycles mini
Weight	0,3990	g

Issue : 1202 B

In the effort to improve our products, we reserve the right to make changes judged to be necessary.



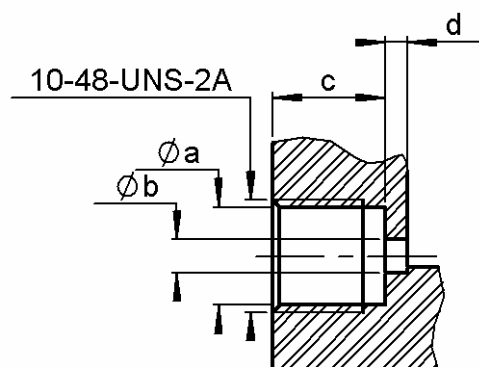
SCREW-ON MALE RECEPTACLE SMOOTH BORE

R222.561.701

Series : SMP

**ADDITIONAL INFORMATIONS
MOUNTING AND REPLEACEMENT INSTRUCTIONS**

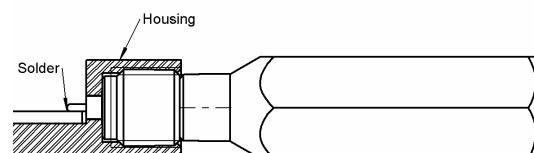
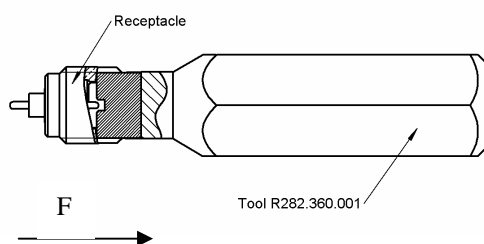
Panel mounting hole



a	4,32
b	1,45 - 1,50
c	4,95
d	1,00

1. Connector must be screwed or unscrewed with adapted torque driver R282.339.001 (recommanded coupling torque : 90 Ncm) Screx driver : R282.360.001
2. Slide on the connector in F direction until it stops against the tool.

3. Screw the whole into the housing until activation of the torque driver.
4. Withdraw the tool and solder the center contact



Issue : 1202 B

In the effort to improve our products, we reserve the right to make changes judged to be necessary.

