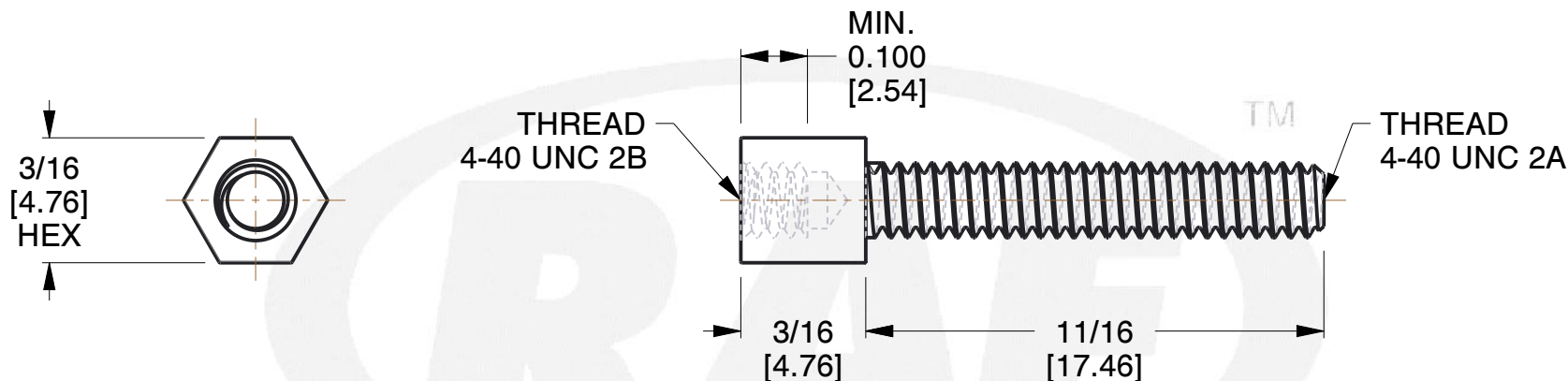
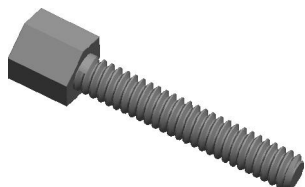
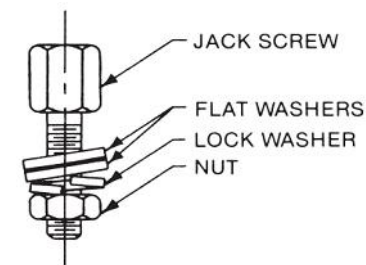


REV	CHANGE	DATE	DRN	CHK
	Drawn	02/08/17	SJ	T




**NOTES:**

1. SUPPLIED WITH  
TWO (2) #4 FLAT WASHERS  
ONE (1) #4 LOCK WASHER  
ONE (1) #4-40 NUT
2. SUPPLIED UNASSEMBLED
3. Material : STEEL ASTM-108
4. Finish : Zinc Plate Per ASTM B-633 (Yellow Chromate)
5. ASME Y14.5M - 2009
6. All Drawing Dimensions are in Inches [mm]
7. Unless otherwise specified; Edge Breaks, Radii or Countersinks 0.005-0.015



ASSEMBLY

 95 Silvermine Rd., Seymour CT 06483 Tel: 203-888-2133, Fax: 203-888-9860	This Drawing is the Property of RAF. It contains confidential, proprietary information that is RAF property. Do not disclose to or duplicate for others except as authorized by RAF.	<b>TOLERANCES</b> ALL DIMENSIONS ARE INCHES (UNLESS OTHERWISE SPECIFIED) <b>METALLIC</b> LENGTHS <math>< /math>: 6 INCHES $\pm$ 0.005 LENGTH >: 6 INCHES $\pm$ 0.010 DIAMETERS: $\pm$ 0.005 <b>NON-METALLIC</b> LENGTH: $\pm$ 0.010 DIAMETERS: $\pm$ 0.010 <b>INTERNAL THREADS:</b> MINIMUM THREAD DEPTH	COMPONENT	HEX JACK SCREWS	<b>SCALE</b>
			4750-9		2.64
			3/16 HEX JACK SCREWS		<b>SHEET</b>
					1 of 1