

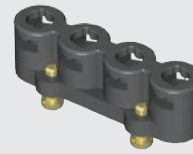


BULLSEYE®
TEST POINT SYSTEM

CCH-J-01



CCH-J-04



CCH-J-02

CCH SERIES

HIGH-PERFORMANCE TEST POINTS

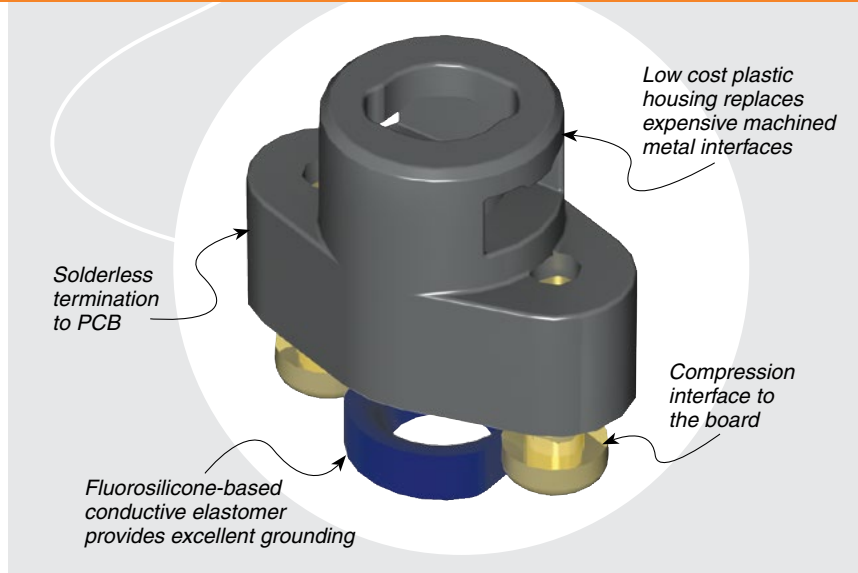
SPECIFICATIONS

Insulator Material:
Black LCP
Gasket Material:
MIL-DTL-83528C, Type D

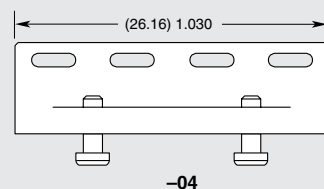
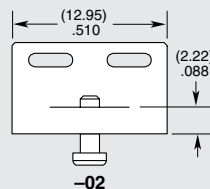
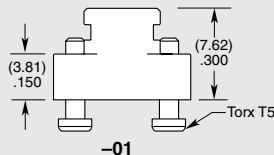
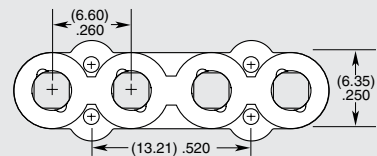
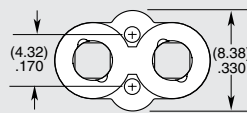
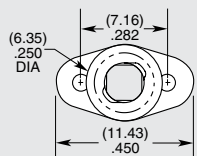
Mates with:
RF25S

OTHER SOLUTIONS

- Replacement elastomer gaskets available



TYPE	J	NUMBER OF POSITIONS
CCH		-01 = 1 Position
		-02 = 2 Positions
		-04 = 4 Positions



Patent:
7544093

Note:
Some lengths, styles and options are non-standard, non-returnable.

Due to technical progress, all designs, specifications and components are subject to change without notice.

WWW.TOBY.CO.UK

All parts within this catalog are built to Samtec's specifications. Customer specific requirements must be approved by Samtec and identified in a Samtec customer-specific drawing to apply.