

(5.08 mm) .200"

**PSS SERIES**

# POWER SOCKET STRIP

## SPECIFICATIONS

For complete specifications and recommended PCB layouts see [www.samtec.com?PSS](http://www.samtec.com?PSS)

**Insulator Material:** Black LCP

**Contact Material:** BeCu

**Plating:** Sn over 50 μ" (1.27 μm) Ni

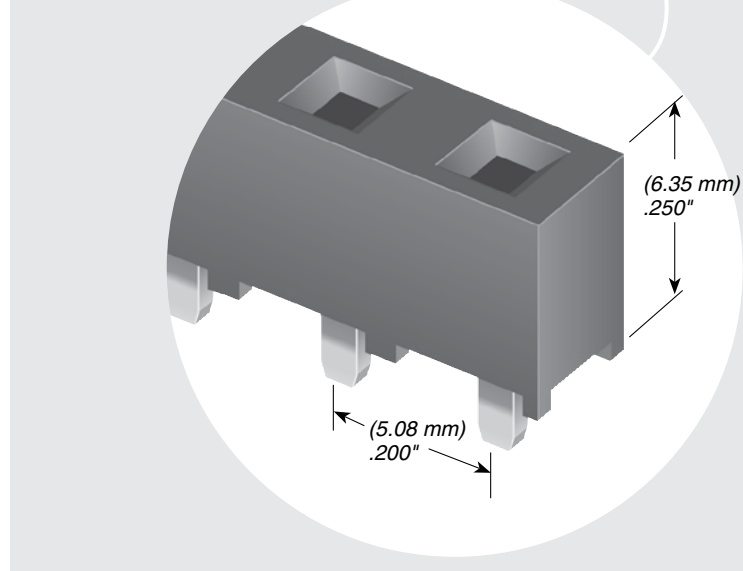
**Current Rating (PSS/FWS):** 11.4 A per pin (1 pin powered)

**Insertion Depth:** (2.62 mm) .103" to (5.03 mm) .198"

**Voltage Rating:** 500 VAC mated with FWS

**RoHS Compliant:** Yes

**Mates with:** FWS, HFWS, SW, HPM, HPW



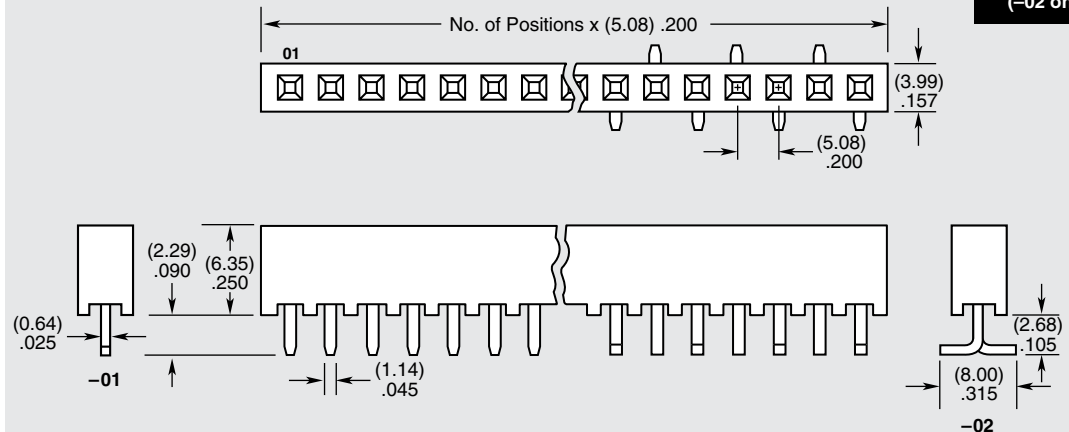
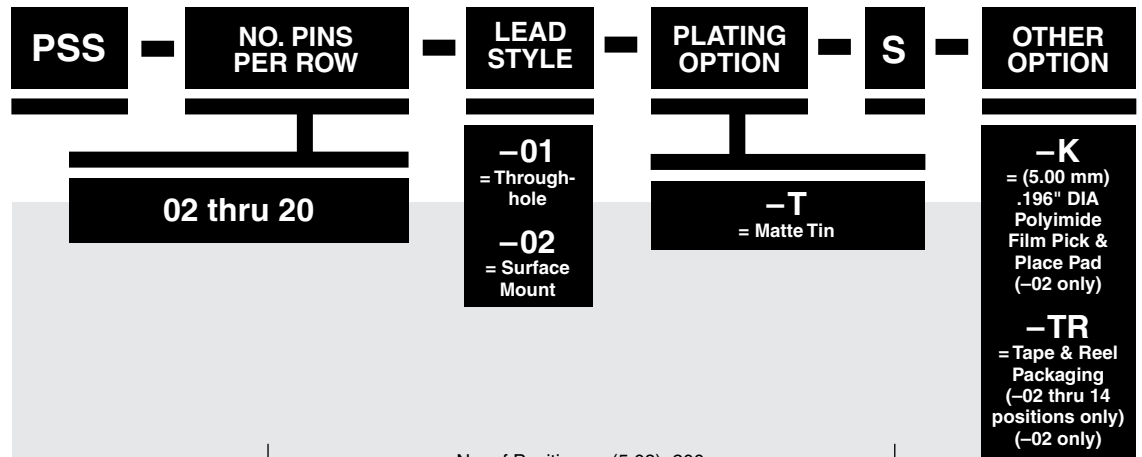
## PROCESSING

**Lead-Free Solderable:** Yes

**SMT Lead Coplanarity:** (0.15 mm) .006" max (02-14)\* (0.20 mm) .008" max (15-20)\*  
\*(.004" stencil solution may be available; contact IPG@samtec.com)

## RECOGNITIONS

For complete scope of recognitions see [www.samtec.com/quality](http://www.samtec.com/quality)



**Note:** Some lengths, styles and options are non-standard, non-returnable.

Due to technical progress, all designs, specifications and components are subject to change without notice.

[WWW.SAMTEC.COM](http://WWW.SAMTEC.COM)

All parts within this catalog are built to Samtec's specifications. Customer specific requirements must be approved by Samtec and identified in a Samtec customer-specific drawing to apply.