

PS 1061 Test Probe, Ø 2 mm, 10 A



## Approvals and Compliances

### Description

- Test Probe
- diameter 2.0 mm

### Weblinks

[pdf datasheet](#), [html-datasheet](#), [General Product Information](#), [Distributor-Stock-Check](#), [Accessories](#), [Detailed request for product](#)

### Technical Data

Diameter	2 mm	Resistance to Soldering Heat	260 °C / 5 sec acc. to IEC 60068-2-20 , Test Tb, method 1A
Rated current	10A	Weight	0.5g
Allowable Operation Temperature	-25 °C to 70 °C	Material: Housing	Thermoplastic (PC), UL 94V-2
		Surface of contacts	gold plated , Thickness 1.0 µm

## Approvals and Compliances

Detailed information on product approvals, code requirements, usage instructions and detailed test conditions can be looked up in [Details about Approvals](#)




### Application standards

Application standards where the product can be used

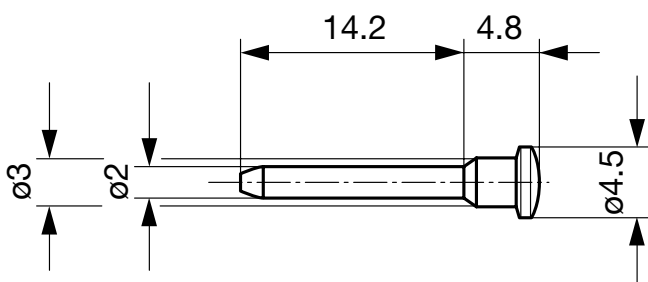
Organization	Design	Standard	Description
	Designed for applications acc.	IEC/UL 60950	IEC 60950-1 includes the basic requirements for the safety of information technology equipment.

### Compliances

The product complies with following Guide Lines

Identification	Details	Initiator	Description
	RoHS	SCHURTER AG	EU Directive RoHS 2011/65/EU
	China RoHS	SCHURTER AG	The law SJ / T 11363-2006 (China RoHS) has been in force since 1 March 2007. It is similar to the EU directive RoHS.
	REACH	SCHURTER AG	On 1 June 2007, Regulation (EC) No 1907/2006 on the Registration, Evaluation, Authorization and Restriction of Chemicals 1 (abbreviated as "REACH") entered into force.

### Dimensions [mm]



All Variants

Product group	Color	Order Number
Test Probe	red	0040.1062

Most Popular.

Availability for all products can be searched real-time: <https://www.schurter.com/en/Stock-Check/Stock-Check-SCHURTER>

Packaging unit 100 Pcs

Mating Outlets/Connectors

Category / Description



[Test Jacks & Probes Overview complete](#)

PB 1011 Test Jack, PCB Mounting, Ø 2 mm, 10 A	PB 1011
PB 1021 Test Jack, PCB Mounting, Ø 2 mm, 6.3 A	PB 1021
PB 1101 Test Jack, PCB Mounting, Ø 2 mm, 10 A	PB 1101
PB 1111 Test Jack, PCB Mounting, Ø 2 mm, 10 A	PB 1111
PB 1151 Test Jack, PCB Mounting, Ø 2 mm, 6.3 A	PB 1151

[Test Jacks & Probes further types to PS 1061](#)

...