

Sealing for Appliance Inlets



6100 with sealing to appliance



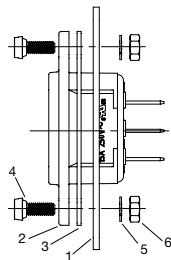
Description

- Protects from ingressing fluids and dust into the appliance
- 1 Function

Weblinks

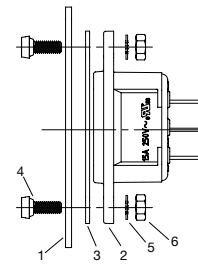
[pdf-datasheet](#), [html-datasheet](#), [General Product Information](#), [Approvals](#), [CE declaration of conformity](#), [RoHS](#), [CHINA-RoHS](#), [REACH](#), [Mating Connectors](#), [e-Shop](#), [SCHURTER-Stock-Check](#), [Distributor-Stock-Check](#), [CAD-Drawings](#), [Accessories](#), [Detailed request for product](#)

Assembly Instructions



- Panel thickness max. 3 mm
Tightening torque max 0.1 Nm
- 1 Chassis
 - 2 Appliance inlet
 - 3 Flat gasket (included in 0098.0103)
 - 4 Screw with sealing (included in 0098.0103)
 - 5 Lock washer (not part of kit)
 - 6 Nut 0.8d (not part of kit)

1) Mounted from rear side



- Panel thickness max. 3 mm
Tightening torque max 0.1 Nm

All Variants

Suitable for	Degree of Protection	Mounting side	Mounting instruction	Mounting option	Order Number
6100-3, 6120-3	IP 54	Front-/Rear-Side	1)	Screws included	0098.0103