

IEC appliance inlet C20, screw-on mounting, front side, solder/quick connect terminal



4798

C20



70° C

**Description**

- Panel Mount:
Screw-on from front side
- Inlet, Pin temperature 70 °C, Protection class I
- Solder terminals or quick connect terminals

Weblinks

Approvals, RoHS, CHINA-RoHS, e-Store, SCHURTER-Stock-Check, Distributor-Stock-Check

Technical Data

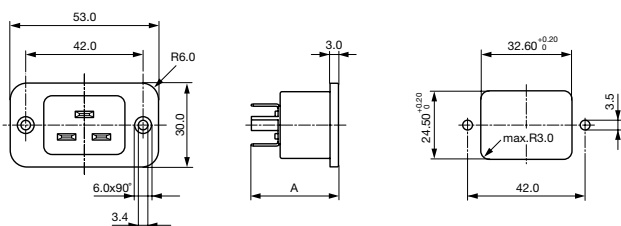
Ratings IEC	16A / 250VAC; Hz 50
Ratings UL/CSA	20A / 250VAC; 60Hz
Dielectric Strength	> 2.2kVAC between L-N
	> 4kVAC between L/N-PE (1 min/50Hz)
Allowable Operation Temp.	-25 °C to 70 °C
Degree of Protection	from front side IP 40 acc. to IEC 60529
Protection Class	Suitable for appliances with protection class I acc. to IEC 61140
Terminal	Solder terminals or quick connect terminals
Panel Thickness s	Screw-on: max 8 mm
	Mounting screw torque max 0.5Nm
Material: Housing	Thermoplastic, black, UL 94V-0

Appliance-Inlet /-Outlet	C20 acc. to IEC/EN 60320-1, UL 498, CSA C22.2 no. 42 (for cold condition) pin-temperature 70 °C, 16A, Protection class I
--------------------------	--

Dimensions

4798

Length |-----| 53 mm



A = 31.5 mm: quick-connect terminals 6.3 x 0.8 mm

A = 30 mm: quick-connect terminals 4.8 x 0.8 mm

A = 28.5 mm: solder terminals

Variants

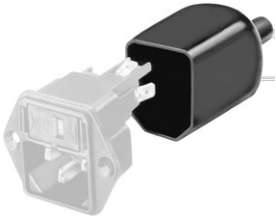
Distributor-Stock-Check | SCHURTER-Stock-Check | e-Store

Panel mounting	Panel Thickness s [mm]	Terminal	Order Number
Screw-on	-	Quick connect terminals 4.8 x 0.8 mm	4798.9100
Screw-on	-	Quick connect terminals 6.3 x 0.8 mm	4798.9000
Screw-on	-	Solder terminals	4798.9200

Packaging unit 100 Pcs

Accessory

Description



Assorted Covers
Rear Cover



Cord retaining kits
Cord retaining strain relieve
