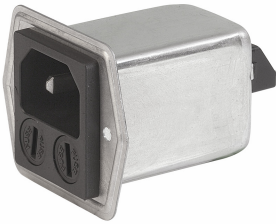


**Catalogue Proposal Farnell 2008**

5707 Power Entry module with filter and IP65 degree of protection



**Unique Selling Features**

- Front and/ or rear mounting
- IP 65 degree of protection
- Medical approval of IEC/UL 60601-1 for Line Filter

**Technical details:**

Voltage rating IEC: 250VAC according to IEC

Voltage rating UL: 125VAC according to UL/CSA

Current Ratings: 1-8A

Terminals: 6,3x0.8mm

Operating temperature: : -25°C to +85°C

Dielectric Strength: > 1.7 kVDC between L-N

> 2.7 kVDC between L/N-PE-test voltage (2sec)

Fuseholder: 5x20mm fuses

Degree of protection: IP 65 from front and rear

Panel Thickness: Screw on-max: 3mm

Description	Manufacturer Part No
Inlet filter 1 A, front, 1p fuse	5707.0101.112
Inlet filter 2 A, front, 1p fuse	5707.0201.112
Inlet filter 4 A, front, 1p fuse	5707.0401.112
Inlet filter 6 A, front, 1p fuse	5707.0601.112
Inlet filter 8 A, front, 1p fuse	5707.0801.112
Inlet filter 1 A, front, 2p fuse	5707.0101.312
Inlet filter 2 A, front, 2p fuse	5707.0201.312
Inlet filter 4 A, front, 2p fuse	5707.0401.312
Inlet filter 6 A, front, 2p fuse	5707.0601.312
Inlet filter 8 A, front, 2p fuse	5707.0801.312
Inlet filter 1 A, front, 2p fuse,med	5707.0103.312
Inlet filter 2 A, front, 2p fuse,med	5707.0203.312
Inlet filter 4 A, front, 2p fuse,med	5707.0403.312
Inlet filter 6 A, front, 2p fuse,med	5707.0603.312
Inlet filter 8 A, front, 2p fuse,med	5707.0803.312