

SPECIFICATIONS

ELECTRICAL:

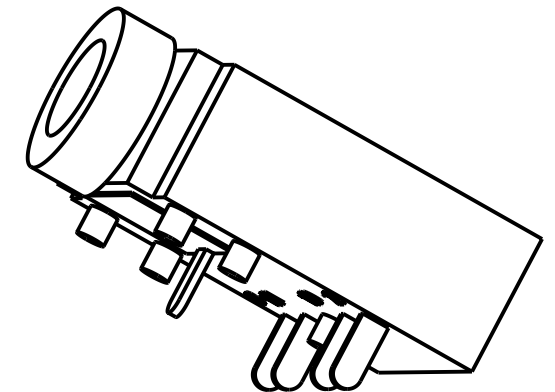
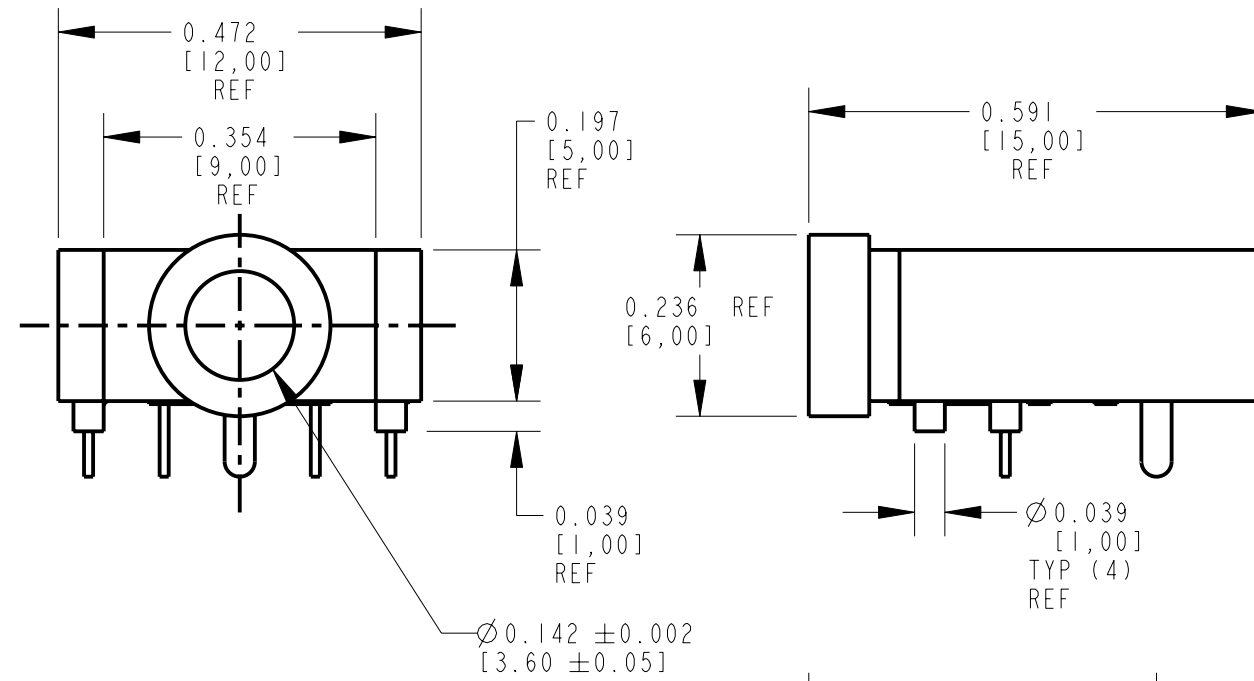
CONTACT RESISTANCE: 0.030 OHMS MAX INITIAL,
0.100 OHMS MAX AFTER LIFE TEST.
INSULATION RESISTANCE: 100 MEGAOHMS MIN @ 500 VDC
DIELECTRIC WITHSTANDING VOLTAGE: 500 VAC

MECHANICAL:

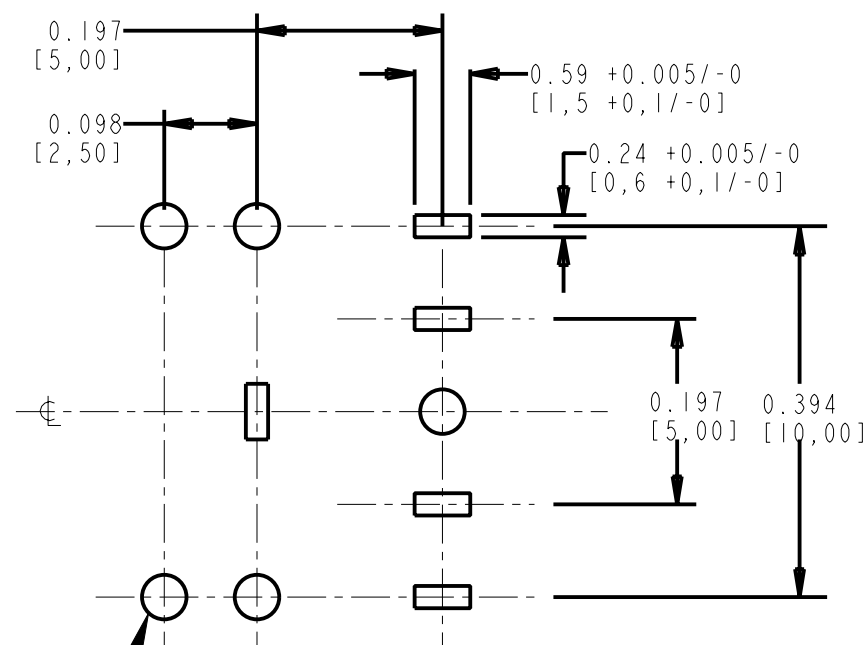
LIFE: 5000 CYCLES
INSERTION FORCE: 0,4 KG TO 3 KG
WITHDRAWAL FORCE: 0,4 KG TO 3 KG

MATERIALS:

HOUSING: PBT, BLACK, UL94V-0
COVER: PBT, BLACK, UL94V-0 OR NORYL, BLACK, UL94V-1
BUSHING: BRASS, NICKEL PLATED
SPRINGS: SLEEVE-PHOSPHOR BRONZE, SILVER PLATED
SHUNT-BRASS, SILVER PLATED.
TIP & RING - COPPER ALLOY, SILVER PLATED



PART NUMBER	REV	SCHEMATIC
35RAPC2AHN2	B	
35RAPC3BHN2	B	
35RAPC4BHN2	C	
35RAPC2BHN2	C	



Ø0.047 HOLE [1,2] TYP (5)

RECOMMENDED P.C. BOARD LAYOUT (COMPONENT SIDE)

SHOWN 35RAPC4BHN2

CUSTOMER DRAWING

REV	ECO NUMBER	DATE	BY	APVD
F	ECO # 24453	4-10-03	SRC	TJK
E	ECO #21793	6-17-97	MM	JF
D	ECO #20278	10-11-95	EB	TAO
C	ECO #19995	10-10-95	EB	TAO
B	ECO #19058	6-29-94	LR	EBR
A	FIRST DRAWN	12-9-93	LR	EBR

★ STAR SYMBOL DENOTES CRITICAL DIMENSION

UNLESS OTHERWISE SPECIFIED

1. ALL DIMENSIONS IN INCHES
- TWO PLACE DECIMALS ±0.01
- THREE PLACE DECIMALS ±0.005
- FRACTIONAL DIMENSIONS ±1/64
- ANGLES ±1°
- ALL DIA. CONCENTRIC WITHIN 0.005 T.I.R.

2. FEATURES ON THE SAME CENTERLINE MUST BE ALIGNED WITHIN ±0.002

3. REMOVE ALL BURRS

DO NOT SCALE DRAWING

THIS DRAWING DESCRIBES A DESIGN CONSIDERED PROPRIETARY IN NATURE, DEVELOPED AND MANUFACTURED BY SWITCHCRAFT INC. AND IS RELEASED ON A CONFIDENTIAL BASIS FOR IDENTIFICATION PURPOSES ONLY.				
SIZE	WIDTH	MULT	LBS/M	TEMPER
FINISH		MATERIAL		
SPEC No.		SPEC No.		
FIRST USED ON		SCALE		
		4:1		
DATE DRAWN	BY	CHKD	APVD	Switchcraft
9-Dec-93	LR	LR 12-10-93	EBR 12-10-93	
NAME			PART No.	REV
3.5MM HORIZONTAL STEREO JACK			35RAPC_ _HN2	F