

# Switchcraft®

[Previous Page](#) | [Return to Index](#) | [Next Page](#)



## MIL-TYPE 1/4" PHONE PLUGS

1. 2-CONDUCTOR SERIES 420, 425
2. 3-CONDUCTOR SERIES 482, 483
3. 2-CONDUCTOR SERIES 430
4. 3-CONDUCTOR SERIES 480 (.206")
5. 2-CONDUCTOR SERIES 440, 445
6. 3-CONDUCTOR SERIES 484 (.206")

[click here to download a schematic drawing](#)

(you will need to have Adobe Acrobat installed on your system to do this)



## FEATURES

Designed for high quality communication equipment to meet military requirements, This series features one-piece tip rod and one-piece sleeve and plug body, assembled together into a mold as inserts, providing a finished plug with complete continuity of thermoplastic insulation between tip rod and plug sleeve. Internal (invisible externally) interlock mechanically engages the metal and plastic components providing a realistic lock to prevent parts shifting. Design and material in accordance with MIL-P-642(A), MIL part number molded or stamped on handle, manufacturer's trademark (as required by MIL specification) appears on plug body.

## SPECIFICATIONS

**Tip Rod, Body and Screws:** Copper alloy, natural finish.

**Terminals:** Tinned copper alloy.

**Insulation:** Thermoplastic, per MIL-P-22985, Type II, Class 1.

**Handles:** Thermoplastic, Type 6, per MIL-M-20693, Type II. Shielded; machined from copper alloy, nickel-plated.

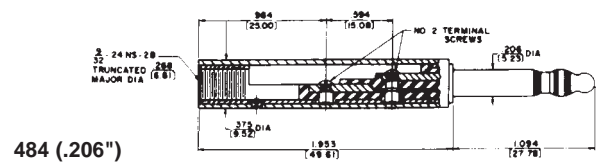
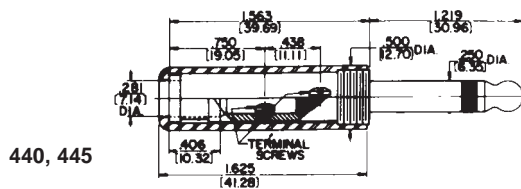
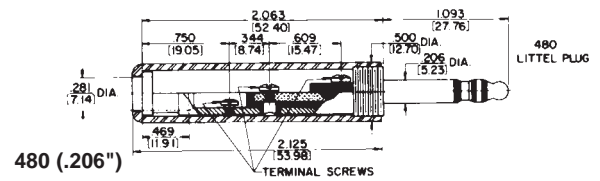
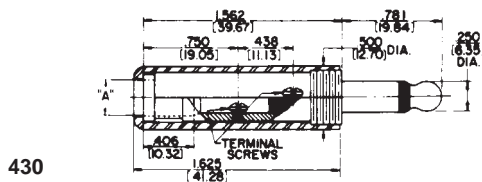
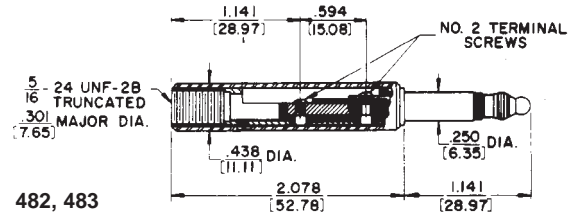
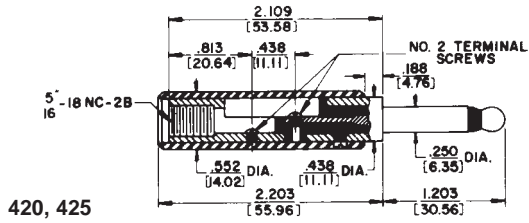
## STRAIN RELIEF CLAMP

For MIL-type Littel-Plug phone plugs. **P2380** conforms to Specification SC-A-7674-F - supplied with Plug Numbers 430, 440, 445 and 470. **P2381** meets Specification MS-35762 - supplied with Plug Number 480 and Extension-Jax® phone jack, Number 820.

[Previous Page](#) | [Return to Index](#) | [Next Page](#)

**To search a category please click on the corresponding icon:**

## MIL-TYPE 1/4" PHONE PLUGS



DIMENSIONS ARE FOR REFERENCE ONLY  $\frac{\text{Inch}}{\text{(mm)}}$

NOTE: Contact your Switchcraft Representative for price and delivery.