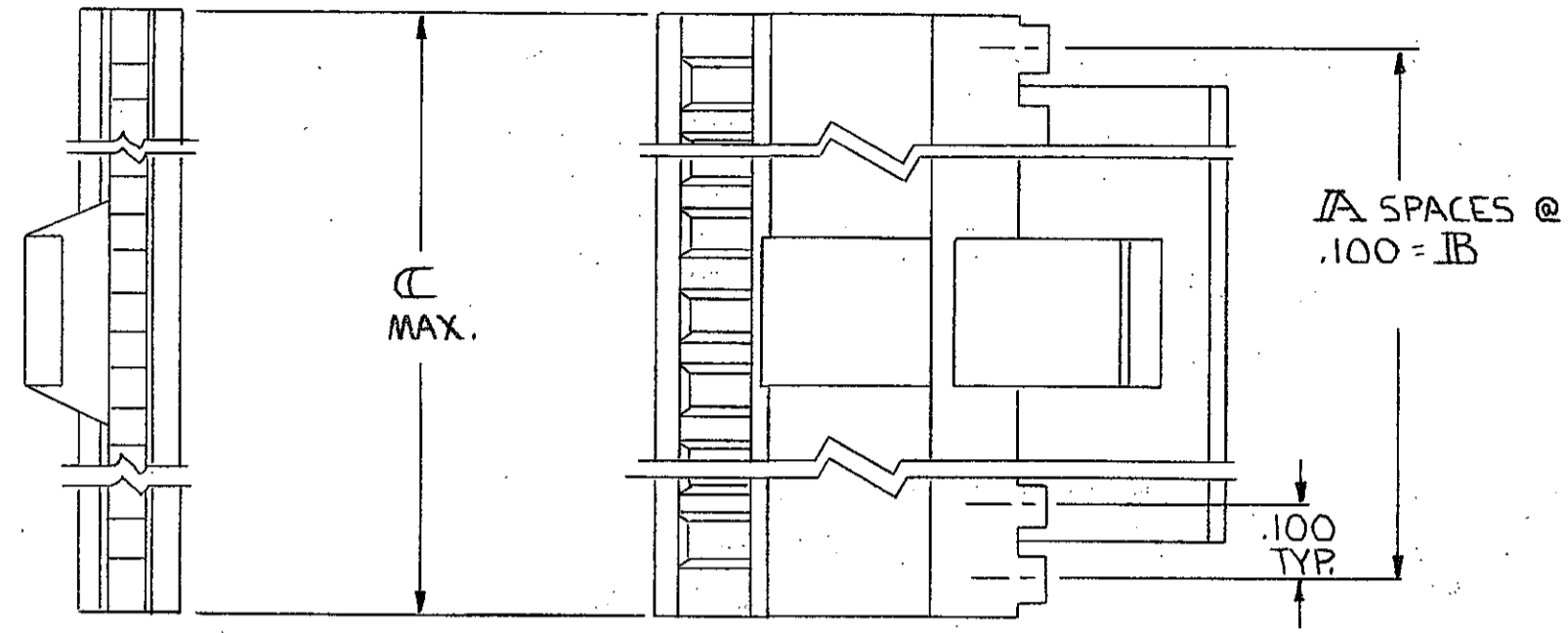
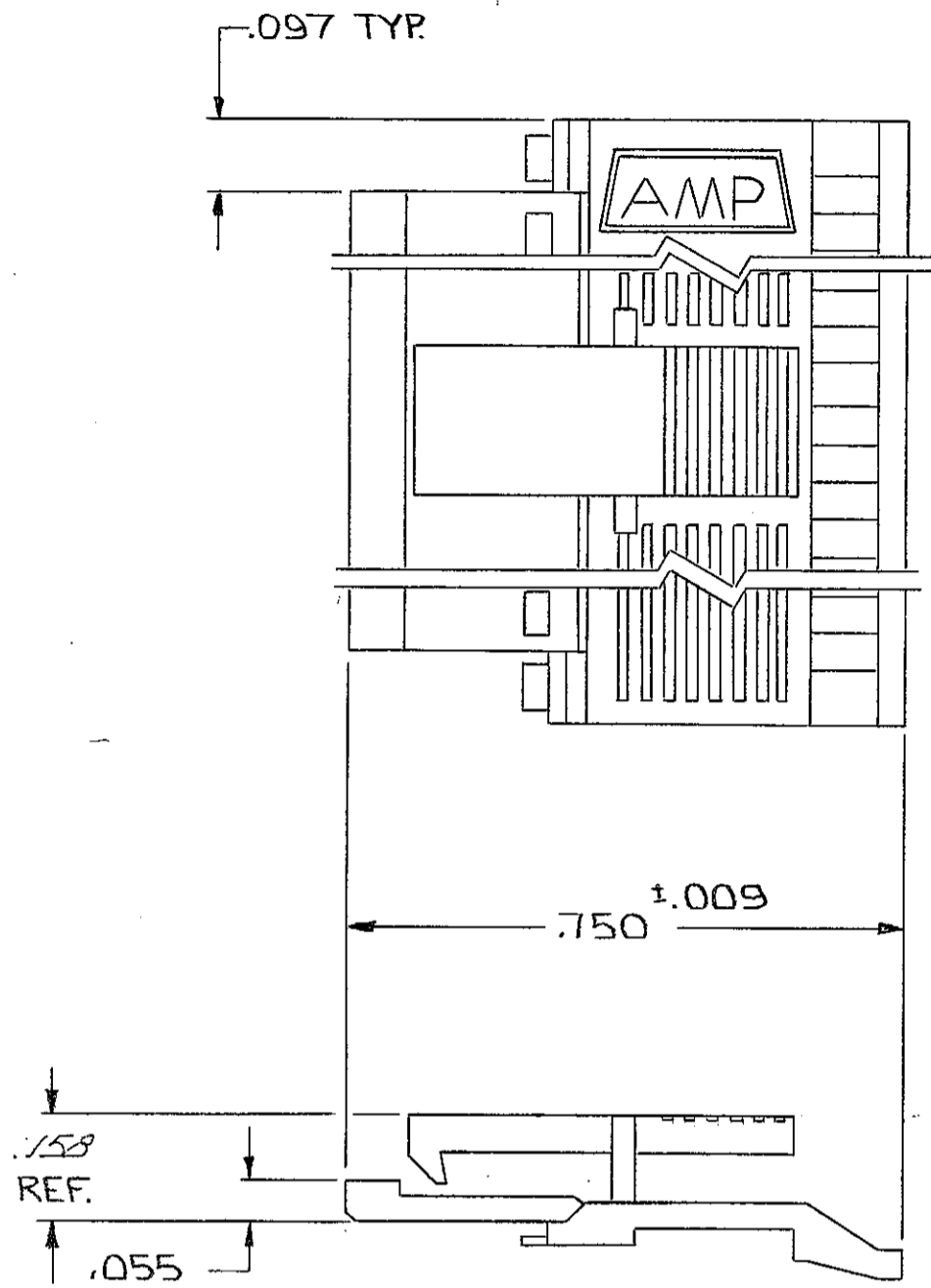


© COPYRIGHT 1980 BY AMP INCORPORATED, HARRISBURG, PA. ALL INTERNATIONAL RIGHTS RESERVED. AMP INCORPORATED PRODUCTS COVERED BY U. S. AND FOREIGN PATENTS AND/OR PATENTS PENDING.

REVISIONS						
P	F	ZONE	LTR	DESCRIPTION	DATE	APPROVED
0	✓		O	RELEASED WAS 5216-180-1 THRU -31		
		A		REV - ECN 1895	02/11/91	RAC
A	✓		A1	REV ECN 1895	4-11-88	SB
✓			B	REV LOC & DIST AD-4171	11-28-89	BF
✓			C	OBS-39 ECN 0115-93	8-93	RAC
✓			D	REV PER 0010-1105-93	4-94	EBJ JH
			E	REV PER 0310-0460-97	11-30-98	W/D



3.600	3.500	35	72	3-102681	-1
3.500	3.400	34	70	3-	-0
3.400	3.300	33	68	2-	-9
3.300	3.200	32	66	2-	-8
3.200	3.100	31	64	2-	-7
3.100	3.000	30	62	2-	-6
3.000	2.900	29	60	2-	-5
2.900	2.800	28	58	2-	-4
2.800	2.700	27	56	2-	-3
2.700	2.600	26	54	2-	-2
2.600	2.500	25	52	2-	-1
2.500	2.400	24	50	2-	-0
2.400	2.300	23	48	1-	-9
2.300	2.200	22	46	1-	-8
2.200	2.100	21	44	1-	-7
2.100	2.000	20	42	1-	-6
2.000	1.900	19	40	1-	-5
1.900	1.800	18	38	1-	-4
1.800	1.700	17	36	1-	-3
1.700	1.600	16	34	1-	-2
1.600	1.500	15	32	1-	-1
1.500	1.400	14	30	1-	-0
1.400	1.300	13	28		-9
1.300	1.200	12	26		-8
1.200	1.100	11	24		-7
1.100	1.000	10	22		-6
1.000	.900	9	20		-5
.900	.800	8	18		-4
.800	.700	7	16		-3
.700	.600	6	14		-2
.600	.500	5	12	102681-1	
C	B	A	NO. OF POS.	PART NO	

- 1. NO. OF POS. PERTAINS TO HOUSING SIZE.
- 2. THIS COVER TO BE USED WITH 102536.
- △ OBSOLETE PART NUMBER

UNLESS OTHERWISE SPECIFIED DIMENSIONS ARE IN INCHES. TOLERANCES ON: DECIMALS ±.005 ANGLES ±	CONTRACT NO 10-31-80	AMP AMP INCORPORATED Harrisburg, Pa. NAME COVER-HALF, LATCH, MASS TERMINATION, AMPMODU, .100 €, FULL BAR POLARIZATION
	DR <i>D. Schmitt</i> CHK <i>P. J. Bergley</i> 11-2-80 ARPD <i>W. J. Berry</i> 11-4-80 APPD <i>L. C. C. Berry</i> 4 Nov 80	
MATERIAL FLAME RETARDANT THERMOPLASTIC COLOR = BLACK	DSGN APPD	SCALE
FINISH	OTHER APPD	SHEET 1 OF 1