

973-208/210/221

AMP

**Standard Profile Headers—Shrouded
with .066 End Dimension
Double Row, .100 x .100 Centers**

For drawings, technical data or samples, contact your AMP sales engineer or call the AMP Product Information Center 1-800-522-6752. Dimensions are shown for reference purposes only.

**.025 Square
Straight Post
(with Detent Windows)**

Material:

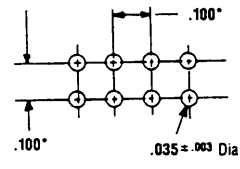
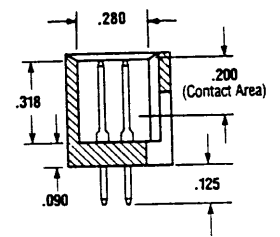
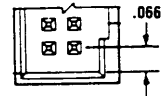
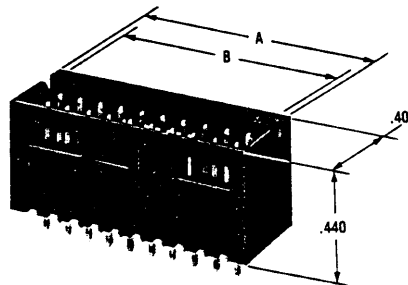
Housing—Black thermoplastic, flame retardant
Contacts—Copper alloy

Related Product Data:

Mateable Connectors:
AMPMODU Board Mount Receptacles—pages 12, 13, 16, 17 & 19
AMPMODU Wire-Applied Receptacles—pages 28, 30 & 31
Wire-Applied Locking Clip Connectors—pages 44 & 45
AMPMODU MTE Connectors—Catalog 83-711
Technical Documents—page 100

Plating Specifications:

Duplex C—.000030 gold on contact area, .000100-.000200 tin-lead on solder area, with entire post underplated .000050 nickel
Duplex D—.000015 gold on contact area, .000100-.000200 tin-lead on solder area, with entire post underplated .000050 nickel
Tin-Lead/Nickel—.000100-.000200 tin-lead over .000050 nickel on entire post



Recommended Pc Board Hole Layout

* ± .003 tolerances not to accumulate within one connector pattern.

No. of Pos.	Dimensions		Packaging Quantity	Post Plating		
	A	B		Duplex C	Duplex D	Tin-Lead/Nickel
973-208 6	.412	.332	100	103168-1	102618-1*	—
973-210 8	.512	.432	100	103168-2	102618-2*	3-87589-5
973-221 10	.612	.532	100	103168-3	102618-3*	87589-1
12	.712	.632	100	103168-4	102618-4	87589-2
14	.812	.732	100	103168-5	102618-5	87589-3
16	.912	.832	100	103168-6	102618-6	87589-4
18	1.012	.932	50	103168-7	102618-7	87589-5
20	1.112	1.032	50	103168-8	102618-8	87589-6
24	1.312	1.232	50	1-103168-0	1-102618-0	87589-8
26	1.412	1.332	50	1-103168-1	1-102618-1	87589-9
30	1.612	1.532	50	1-103168-3	1-102618-3	1-87589-1
34	1.812	1.732	50	1-103168-5	1-102618-5	1-87589-3
40	2.112	2.032	50	1-103168-8	1-102618-8	1-87589-6
50	2.612	2.532	50	2-103168-3	2-102618-3	2-87589-1
60	3.112	3.032	50	2-103168-8	2-102618-8	2-87589-6

Standard Profile Headers—
Shrouded