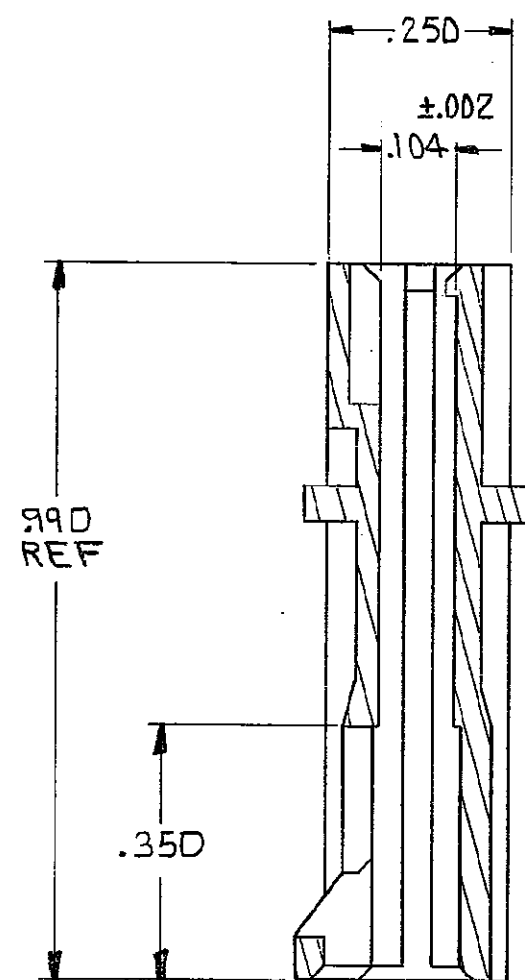
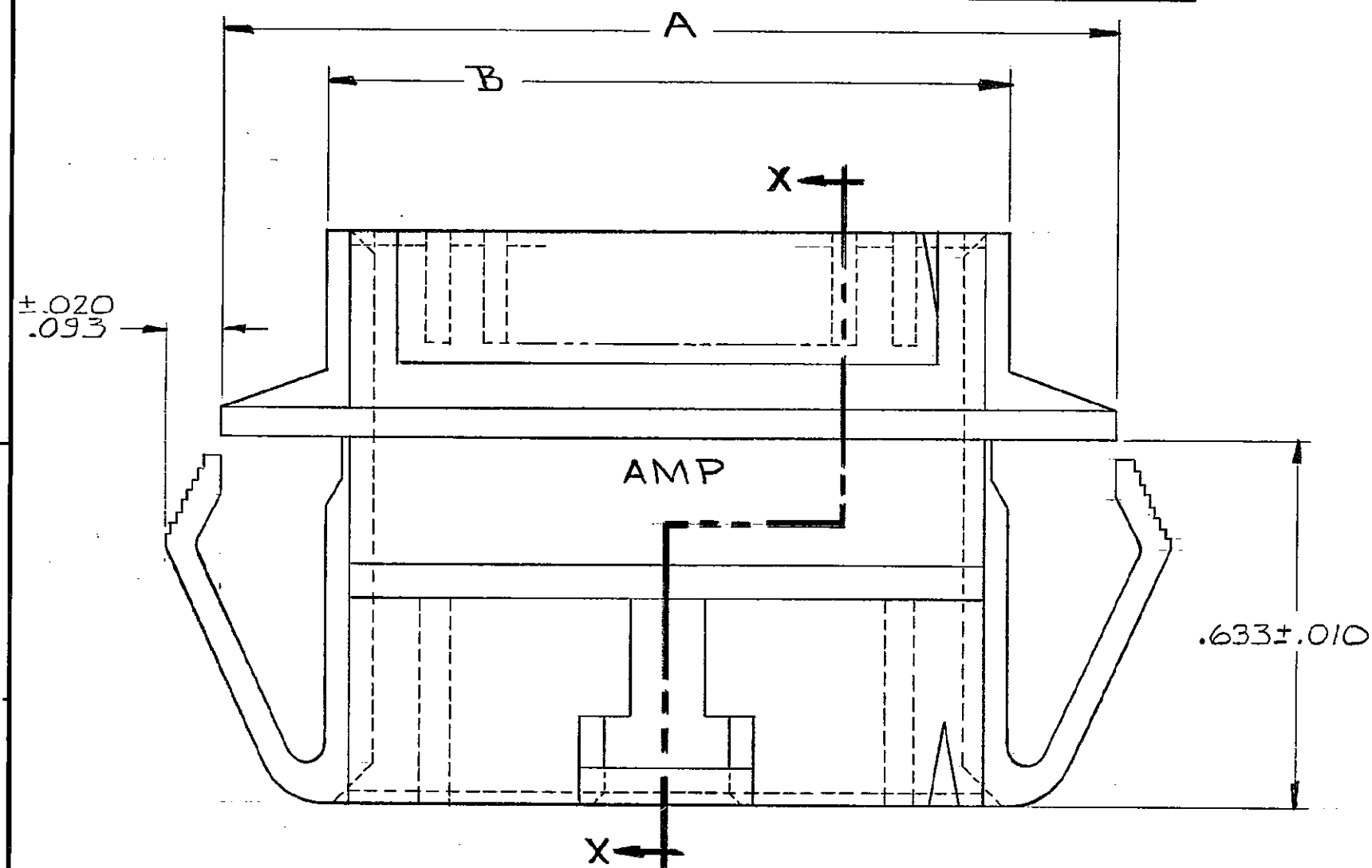
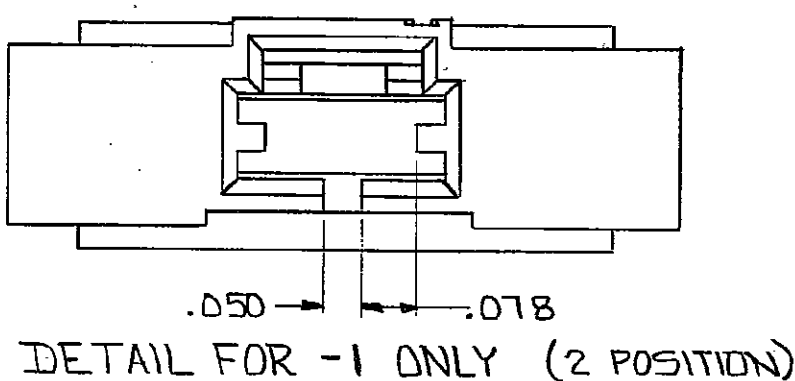
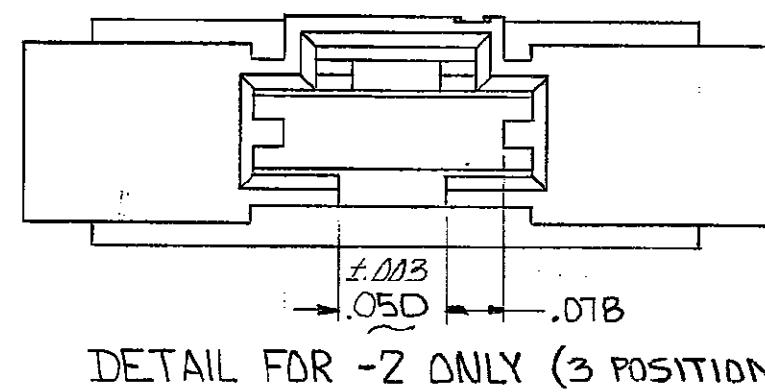


THIS DRAWING IS UNPUBLISHED. RELEASED FOR PUBLICATION
 © COPYRIGHT 1985 BY AMP INCORPORATED, HARRISBURG, PA. ALL INTERNATIONAL RIGHTS RESERVED. AMP PRODUCTS MAY BE COVERED BY U.S. AND FOREIGN PATENTS AND/OR PATENTS PENDING.

P	F	ZONE	LTR	DESCRIPTION	DATE	APPROVED
0				RELEASED	5-23-85	JW
A	✓		A	REV ECN 952	JUN 2-19-86	FB
B	✓		B	REV ECN 1178	9-25-86	FB
B1	✓		B1	REV ECN 1635	JUN 7-21-87	FB
C	✓		C	REV LOC & DIST AD-4171	11-22-89	BF
D	✓		D	OBS PER ECN 0831-93	8-93	RAC
E	✓		E	REV PER 0010-1290-93	2-4-94	EB
F	✓		F	REV PER 0010-0782-93	2-16-94	DLG
G	✓		G	REV PER 0010-1884-93	2-16-94	DLG

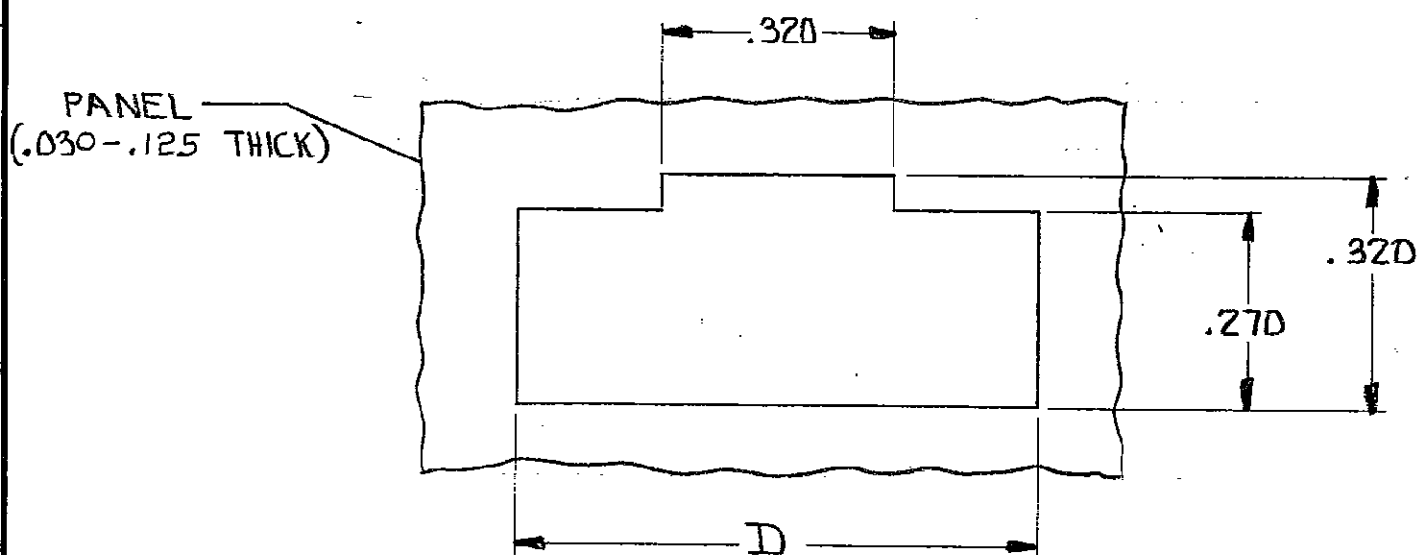
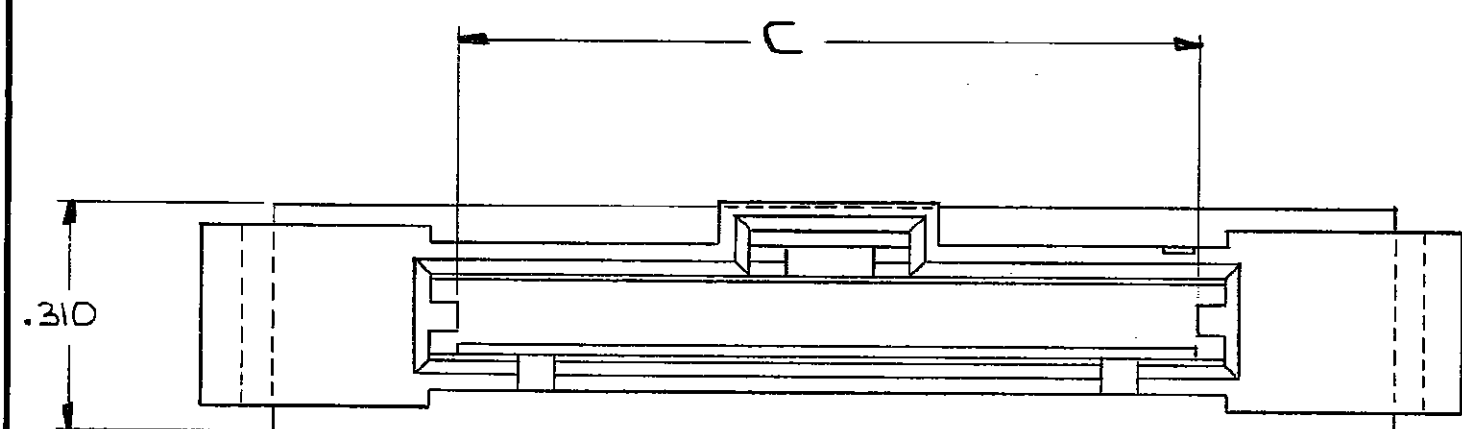


SECTION X-X



1. SHROUD ACCEPTS RIBBED PIN ASSEMBLIES
2. SHROUD MATES WITH LATCHING RECEPTACLE ASSEMBLIES

2.925	2.505	2.665	3.035	25	2-103682-4
2.825	2.405	2.565	2.935	24	2- -3
2.725	2.305	2.465	2.835	23	2- -2
2.625	2.205	2.365	2.735	22	2- -1
2.525	2.105	2.265	2.635	21	2- -0
2.425	2.005	2.165	2.535	20	1- -9
2.325	1.905	2.065	2.435	19	1- -8
2.225	1.805	1.965	2.335	18	1- -7
2.125	1.705	1.865	2.235	17	1- -6
2.025	1.605	1.765	2.135	16	1- -5
1.925	1.505	1.665	2.035	15	1- -4
1.825	1.405	1.565	1.935	14	1- -3
1.725	1.305	1.465	1.835	13	1- -2
1.625	1.205	1.365	1.735	12	1- -1
1.525	1.105	1.265	1.635	11	1- -0
1.425	1.005	1.165	1.535	10	-9
1.325	.905	1.065	1.435	9	-8
1.225	.805	.965	1.335	8	-7
1.125	.705	.865	1.235	7	-6
1.025	.605	.765	1.135	6	-5
.925	.505	.665	1.035	5	-4
.825	.405	.565	.935	4	-3
.725	.305	.465	.835	3	-2
.625	.205	.365	.735	2	103682-1
D	C	B	A	Nº OF POSITIONS	PART NO



RECOMMENDED PANEL CUTOUT

UNLESS OTHERWISE SPECIFIED DIMENSIONS ARE IN INCHES. TOLERANCES ON: DECIMALS ±.005 ANGLES	CONTRACT NO	AMP AMP INCORPORATED Harrisburg, Pa. 17105	
	MATERIAL BLACK THERMOPLASTIC	DR 5/23/85	NAME SHROUD, PIN, PANEL MOUNT, AMPMDDU MTE, SINGLE ROW, 100 E
FINISH	OTHER APPD	SIZE C	FSCM NO 00779
		DRAWING NO 103682	SHEET