

Distributed by:

JAMECO[®]
ELECTRONICS

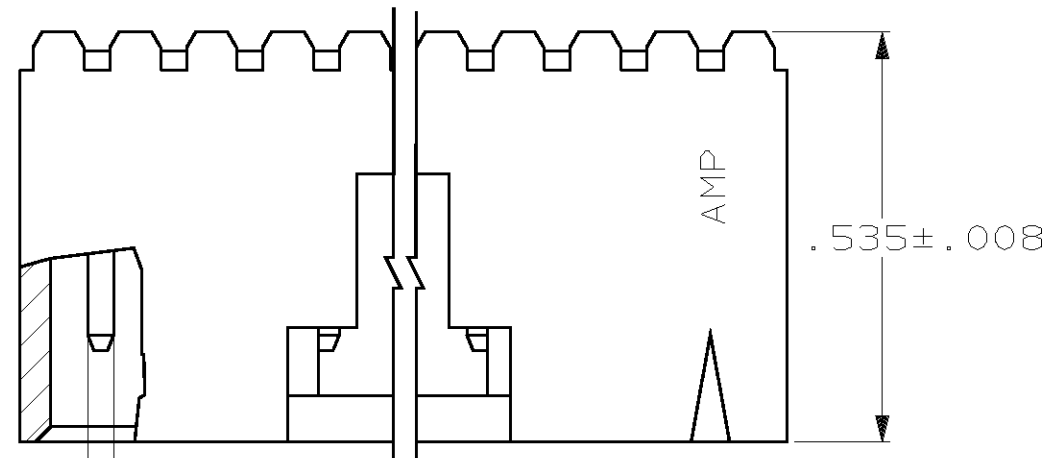
www.Jameco.com ♦ 1-800-831-4242

The content and copyrights of the attached
material are the property of its owner.

Jameco Part Number 895203

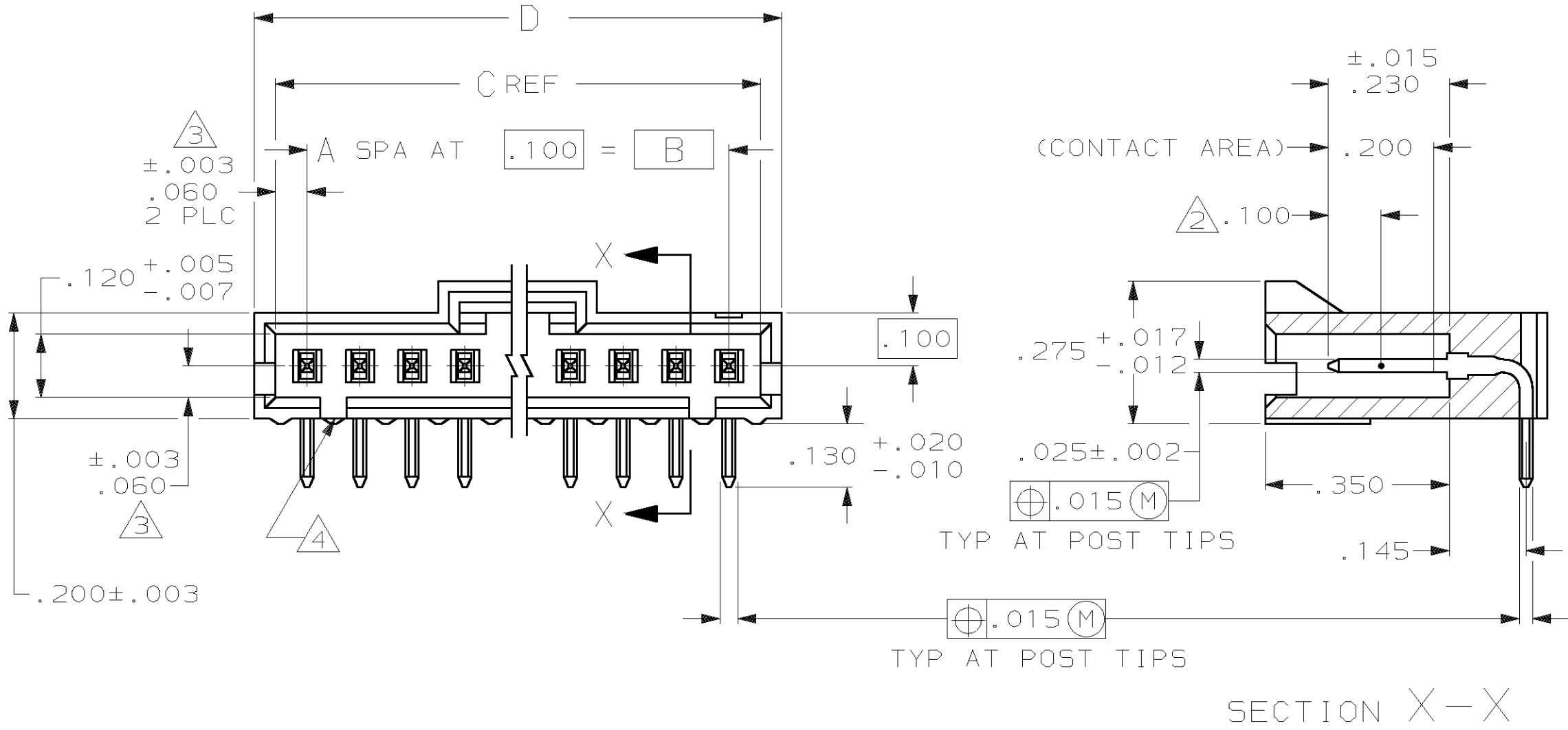
THIS DRAWING IS UNPUBLISHED. RELEASED FOR PUBLICATION, 19
 © COPYRIGHT 19 BY AMP INCORPORATED, HARRISBURG, PA. ALL INTERNATIONAL RIGHTS RESERVED. AMP PRODUCTS MAY BE COVERED BY U.S. AND FOREIGN PATENTS AND/OR PATENTS PENDING.

LOC		DIST		P		F		REVISIONS		DATE	APPROVED
AD	00					ZONE	LTR	DESCRIPTION			
								o	RELEASED	-	-
								A	REV PER ECN AR2325	JPG 4-20-89	
								B	REV LOC & DIST AD-4171	3-90	BF
								C	0B5 PER 0010-0831-93	9-15-93	JG
								D	REV PER 0010-0782-93	2-16-94	JG
								E	REV PER 0010-1884-93	2-16-94	JG
								F	REV PER 0010-0104-95	3-3-95	JG
								G	REV PER 0010-0012-96	1-3-96	JG
								H	REV PER 0010-1114-95	1-25-96	JG
								J	REV PER 0430-0025-96	1-23-97	JG
								K	REV PER 0310-0040-97	1-28-97	JG
								L	REV PER 0310-0355-97	02-FEB-98	JG
								M	REV PER EC 0G3C-0441-00	05FEB01	KW

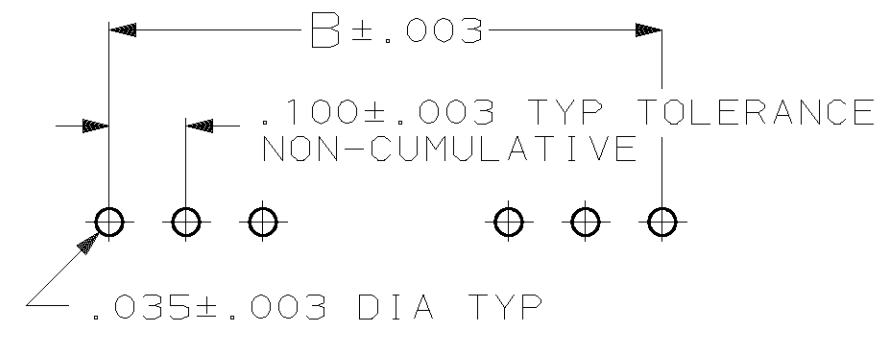


- ① .000030 GOLD IN THE CONTACT AREA,
 .000100-.000200 MATTE TIN-LEAD ON THE
 SOLDER TAIL, ALL OVER .000050 NICKEL
- ② POINT OF MEASUREMENT FOR PLATING THICKNESS
- ③ THE NOTED DIMENSIONS APPLY FROM THE BASIC
 DIMENSION LINE (NOT THE POST CENTERLINE)
 TO THE SURFACE INDICATED
- ④ ON ASSEMBLIES WITH FOUR OR MORE POSITIONS,
 TWO POLARIZATION SLOTS.
 ON ASSEMBLIES WITH TWO OR THREE POSITIONS,
 ONE POLARIZATION SLOT.

.025 ± .001
 TYP
 .015 (M)
 TYP AT POST TIPS



2.600	2.520	2.400	24	25	2-103906-4
2.500	2.420	2.300	23	24	2-103906-3
2.400	2.320	2.200	22	23	2-103906-2
2.300	2.220	2.100	21	22	2-103906-1
2.200	2.120	2.000	20	21	2-103906-0
2.100	2.020	1.900	19	20	1-103906-9
2.000	1.920	1.800	18	19	1-103906-8
1.900	1.820	1.700	17	18	1-103906-7
1.800	1.720	1.600	16	17	1-103906-6
1.700	1.620	1.500	15	16	1-103906-5
1.600	1.520	1.400	14	15	1-103906-4
1.500	1.420	1.300	13	14	1-103906-3
1.400	1.320	1.200	12	13	1-103906-2
1.300	1.220	1.100	11	12	1-103906-1
1.200	1.120	1.000	10	11	1-103906-0
1.100	1.020	.900	9	10	103906-9
1.000	.920	.800	8	9	103906-8
.900	.820	.700	7	8	103906-7
.800	.720	.600	6	7	103906-6
.700	.620	.500	5	6	103906-5
.600	.520	.400	4	5	103906-4
.500	.420	.300	3	4	103906-3
.400	.320	.200	2	3	103906-2
.300	.220	.100	1	2	103906-1
D	C	B	A	NO OF POS	ASSEMBLY PART NUMBER



RECOMMENDED HOLE LAYOUT

UNLESS OTHERWISE SPECIFIED
 DIMENSIONS ARE IN INCHES
 TOLERANCES ON :
 2 PL DEC ± -
 3 PL DEC ± .005
 ANGLES ± -
 MATERIAL: HOUSING:
 FLAME RETARDANT
 THERMOPLASTIC
 COLOR - BLACK
 CONTACTS: BRASS
 FINISH: POST:
 ①

DR 4-30-86
 LA MAYER
 CHK 4-30-86
 P deJONG
 APPD 4-30-86
 P deJONG
 APPD 4-30-86
 C LINDGREN
 PRODUCT SPEC
 108-25034
 APPLICATION SPEC
 -
 WEIGHT
 -

AMP AMP INCORPORATED
 Harrisburg, Pa. 17105

NAME
 ASSY, AMPMODU MTE, HEADER, RIGHT
 ANGLE, SINGLE ROW, .100¢,
 .025 SQ POST, WITH LATCH

SIZE **C** F5CM NO 00779 DRAWING NO 103906

SCALE 4:1 SHEET 1 OF 1