

Distributed by:

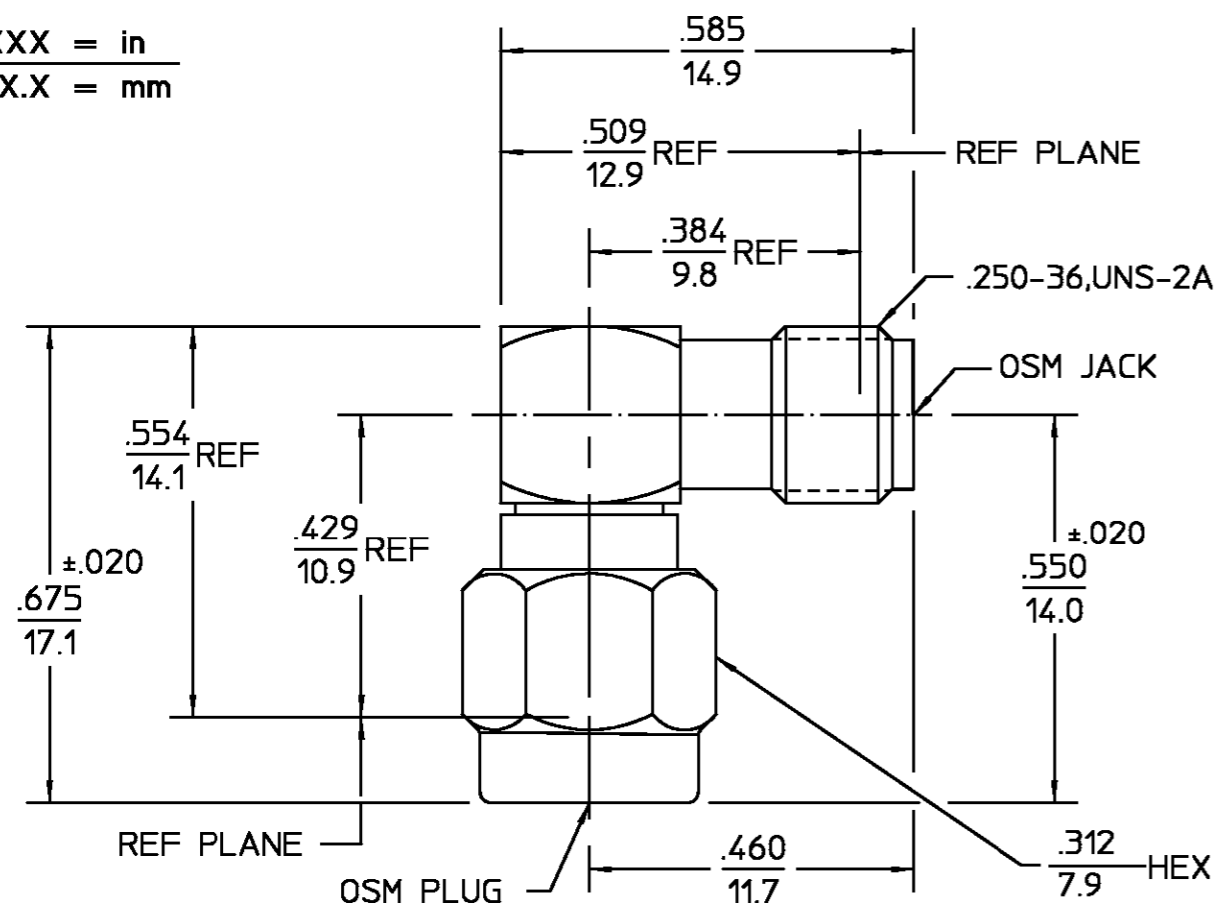
JAMECO[®]
ELECTRONICS

www.Jameco.com ♦ 1-800-831-4242

The content and copyrights of the attached
material are the property of its owner.

Jameco Part Number 739382

.XXX = in
XX.X = mm



REVISIONS			
REV	DESCRIPTION	DATE	APPROVED
01 ₂	REVISED	10/26/93	<i>AD</i>

COMPONENT	MATERIAL	FINISH
HOUSING COUPLING NUT CAP	STAINLESS STEEL PER ASTM-A484 AND ASTM- A582, TYPE 303	PASSIVATE PER ASTM-A380
DIELECTRIC	TFE FLUOROCARBON PER ASTM-D-1457	N/A
CENTER CONTACT	BERYLLIUM COPPER PER ASTM B 196, ALLOY C17300, CONDITION H	GOLD PLATE PER MIL-G-45204 OVER COPPER PLATE PER MIL-C-14550
RETAINING RING	BERYLLIUM COPPER PER ASTM B 194, ALLOY C17200, CONDITION H	N/A
GASKET	SILICONE RUBBER PER ZZ-R-765	N/A

ELECTRICAL	MECHANICAL	ENVIRONMENTAL
Nominal Impedance (Ohms) <u>50</u>	Interface Dimensions MIL-STD-348A, Fig. 310.1.2	Temperature Rating <u>-65°C to +125°C</u>
Frequency Range (GHz) DC to <u>18</u>	Recommended Mating	Vibration MIL-STD-202, Method 204, Condition D
Volt Rating (VRMS MAX)	Torque <u>7 to 10</u>	Shock MIL-STD-202, Method 213, Condition I
@ Sea Level <u>335</u>	Mating Characteristics:	Thermal Shock MIL-STD-202, Method 107, Condition B, Except High Temp
VSWR <u>1.15 + .015(f/GHz)</u>	Insertion (MAX Lbs) <u>3</u>	Moisture Resistance MIL-STD-202, Method 106
Insertion Loss (dB MAX) <u>.04/f(GHz)</u>	Withdrawal (MIN Oz) <u>1</u>	Corrosion - MIL-STD-202, Method 101, Condition B, 5% salt spray
RF Leakage (dB MIN) <u>-(90-f(GHz))</u>	Force to Engage and Disengage (In-Lbs MAX) <u>2</u>	
Corona, 70,000 Ft (VRMS MIN) <u>250</u>	Center Contact Captivation	
Dielectric Withstanding Voltage (VRMS MIN) @ Sea Level <u>1000</u>	Axial (Lbs) <u>6</u>	
Contact Resistance (Milliohms MAX)	Radial (In-Oz) <u>4</u>	
Center Contact <u>2</u>	Cable Retention	
Outer Contact <u>2</u>	Axial Force (Lbs) <u>N/A</u>	
Cable to Housing <u>N/A</u>	Torque (In-Oz) <u>N/A</u>	
RF High Potential @ Sea Level	Weight (Grams) <u>TBD</u>	
(VRMS MIN @ 5 MHz) <u>670</u>		
I.R.(Megohms MIN) <u>10,000</u>		

UNLESS OTHERWISE SPECIFIED DIMENSIONS ARE IN INCHES TOLERANCE ON FRAC. DEC. ANGLES ± 1/64 ±.005 ± °	DRAWN BY G.BEERS DATE 8/18/81 CHECKED BY RMF 8/21/81 APP'D BY JS 8/21/81	AMP AMP Incorporated 140 Fourth Avenue Waltham, MA 02451-7599
USE ASS'Y PROCEDURE	TITLE OSM RIGHT ANGLE PLUG TO JACK ADAPTER	
NO. AP. <u>N/A</u>	SIZE B	CODE IDENT NO. 2088-1230-02
	SCALE 5:1	REV 01₂
		SHEET 1 OF 1

CUSTOMER DRAWING

AMP PART # 1055070-1
SHEET 1 OF 1 REV A