

1057159-1 Product Details

[Share](#) [Print](#) [Email](#)



1057159-1

TE Internal Number:
1057159-1

 Active

N Series RF Connectors

 Always EU RoHS/ELV Compliant (Statement of Compliance)

Product Highlights:

- Connector - RF
- Jack
- Coaxial Cable Termination Type = Solder
- Applies To Cable
- Coaxial Cable Type (RG/U or Mfg.) = 402 Semi-Rigid/3.58 [.141]

[View all Features](#)

Quick Links

- ▶ [Pricing & Availability](#)
- ▶ [Search for Tooling](#)
- ▶ [Product Feature Selector](#)
- ▶ [Contact Us About This Product](#)

[Add to My Part List](#)

[Request Sample](#)

[Find Similar Products](#)

[Buy Product](#)

Documentation & Additional Information

Product Drawings:

- [BULKHEAD FEEDTHROUGH CABLE JACK ASSY N SERIES, DIRE...](#) (PDF, English)

Catalog Pages/Data Sheets:

- None Available

Product Specifications:

- None Available

Application Specifications:

- None Available

Instruction Sheets:

- [Type N Bulkhead Feedthrough Cable Jack Connectors](#) (PDF, English)

CAD Files:

- None Available

[List all Documents](#)

Related Products:

- [Tooling](#)

Product Features (Please use the Product Drawing for all design activity)

Product Type Features:

- [Product Type](#) = Connector - RF
- [Gender](#) = Jack
- [Wire/Cable Type](#) = Coaxial Cable
- [Grade](#) = Commercial
- [Lightning/EMP Protection](#) = None
- [Dielectric Material](#) = TFE Fluorocarbon
- [Weatherproof](#) = No

Mechanical Attachment:

- [Panel Mount Retention](#) = With
- [Panel Mount Retention Type](#) = Bulkhead
- [Panel Attachment Style](#) = Rear Mount

Electrical Characteristics:

- [Frequency](#) = DC - 11 GHz
- [Connector Impedance \(\$\Omega\$ \)](#) = 50
- [Insulation Resistance \(M \$\Omega\$ \)](#) = 5,000

Contact Features:

- [Captured Center Contact](#) = Without
- [Center Contact Plating](#) = Gold
- [Center Contact Material](#) = Beryllium Copper

Configuration Features:

- [Coaxial Cable Type \(RG/U or Mfg.\)](#) = 402 Semi-Rigid/3.58 [.141]

Industry Standards:

- [Government/Industry Qualification](#) = No
- [RoHS/ELV Compliance](#) = RoHS compliant, ELV compliant
- [Lead Free Solder Processes](#) = Not relevant for lead free process
- [RoHS/ELV Compliance History](#) = Always was RoHS compliant

Conditions for Usage:

Termination Features:

- Coaxial Cable Termination Type = Solder

Dimensions:

- Panel Thickness (mm [in]) = 6.35 [0.250]

Body Features:

- Body Style = Straight
- Body Plating = Gold
- Body Material = Brass
- Gasket Material = Silicone Rubber
- Lockwasher Material = Stainless Steel
- Lockwasher Plating = Passivated

- Applies To = Cable

Other:

- Brand = AMP

Corporate Information

[About TE](#)
[Investors](#)
[News Room](#)
[Supplier Portal](#)
[Careers](#)
[Terms & Conditions](#)
[Privacy Policy](#)
[AODA Accessibility Policy](#)
[AODA Multi-Year Accessibility Plan](#)

Quick Links

[Distributor Inventory](#)
[Product Cross Reference](#)
[Documents & Drawings](#)
[Product Compliance Support Center](#)
[Site Map](#)

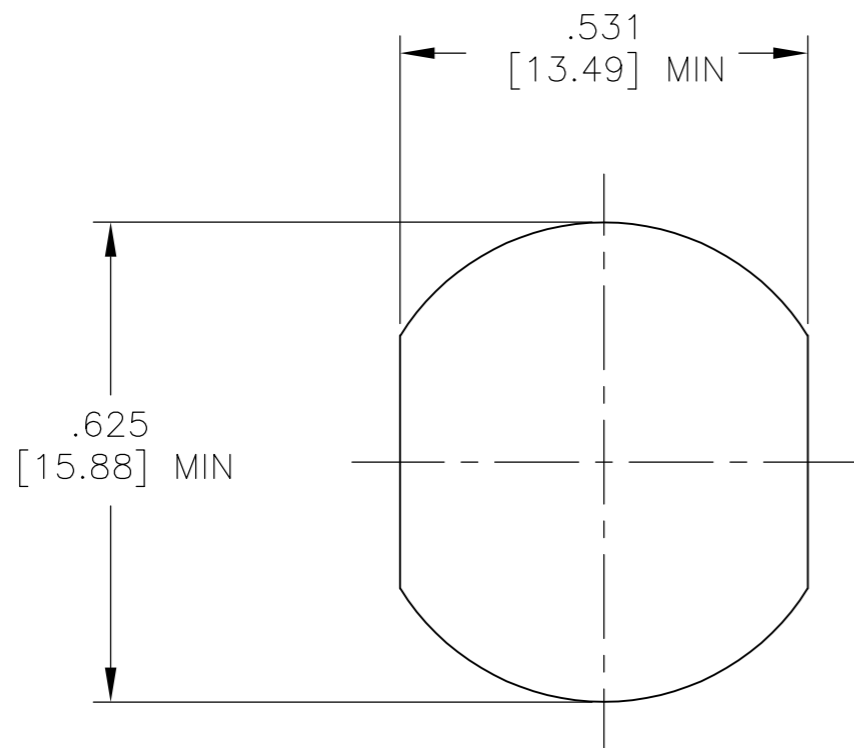
Customer Support

[Email or Chat With Us](#)
[Find a Phone Number](#)
[Knowledge Base](#)
[Manage Your Account](#)

Keep Me Informed

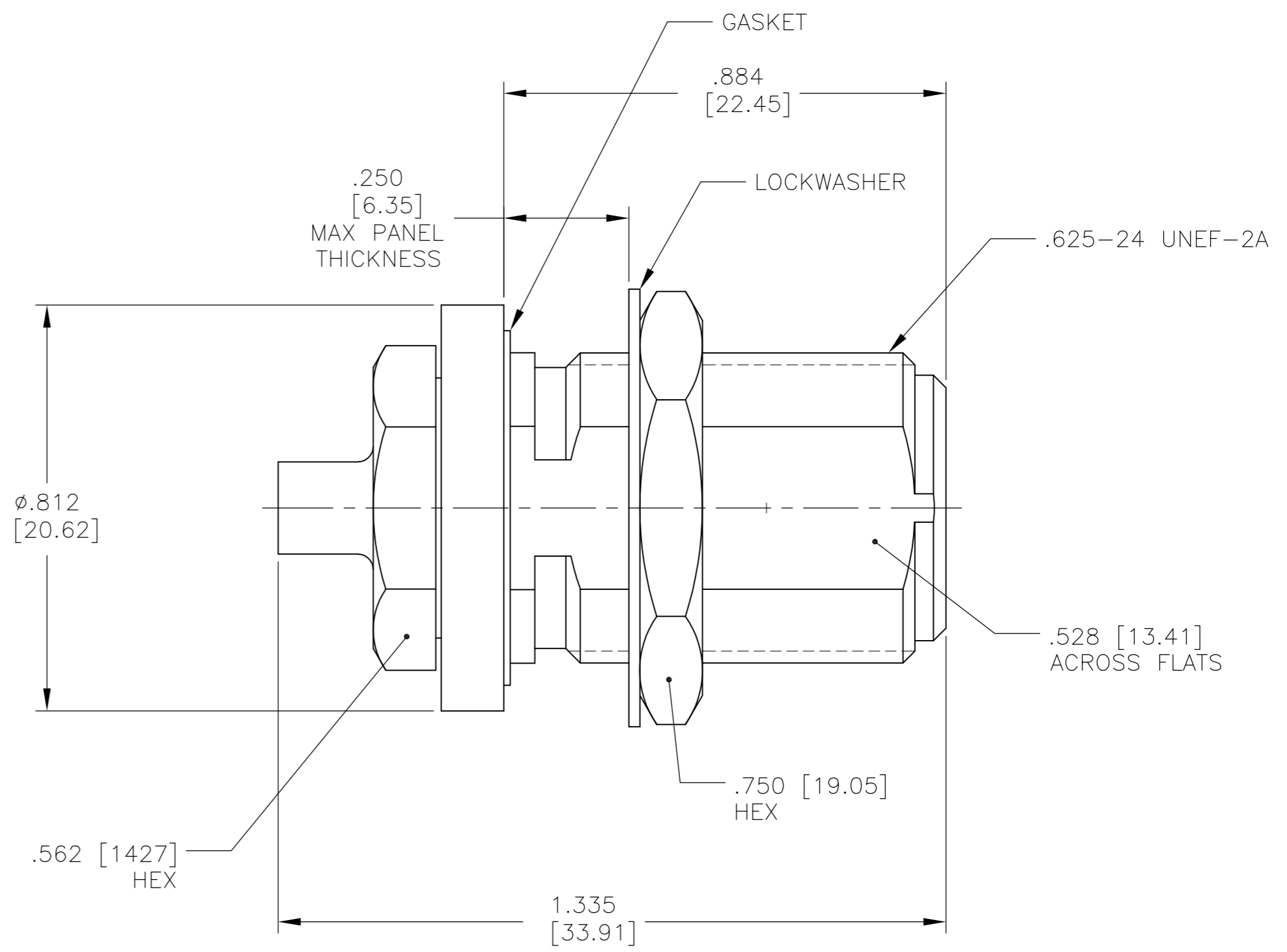
| | | | |
|---------------------------------------|--|-------------------------------|--|
| THIS DRAWING IS UNPUBLISHED. | | RELEASED FOR PUBLICATION | |
| © COPYRIGHT - By - | | ALL RIGHTS RESERVED. | |
| HOUSING | BRASS PER QQ-B-626 COMP. 360 | GOLD PLATE PER ASTM-B488 | |
| HOUSING MOUNTING NUT LOCKWASHER | STAINLESS STEEL PER ASTM-A484 AND ASTM- A582, TYPE 303 | PASSIVATE PER SAE-AMS-2700 | |
| DIELECTRIC | TFE FLUOROCARBON PER ASTM-D-1457 | N/A | |
| CENTER CONTACT | BERYLLIUM COPPER PER ASTM B 196, ALLOY C17300, CONDITION H | GOLD PLATE PER ASTM-B488 | |
| GASKET | SILICONE RUBBER PER ZZ-R-765 | N/A | |
| "O" - RING | SILICONE RUBBER PER ZZ-R-765, CLASS 2B | N/A | |
| COMPONENT | MATERIAL | FINISH | |

| LOC | DIST | REVISIONS | | | | | |
|-----|------|-----------|-----|-----------------------|---------|-----|------|
| - | - | P | LTR | DESCRIPTION | DATE | DWN | APVD |
| | | B | | REV PER ECO 12-006209 | 3-30-12 | CT | WM |



RECOMMENDED MOUNTING HOLE

| | |
|--|-------------|
| DESIGNED FOR USE WITH .141 DIA S/R CABLE CABLE ENTRY DIAMETER MINIMUM | |
| HOUSING | .142 [3.61] |
| CONTACT | .041 [1.04] |



| ELECTRICAL | MECHANICAL | ENVIRONMENTAL |
|---|---|---|
| Nominal Impedance (Ohms) <u>50</u> | Interface Dimensions MIL-STD-348A, Fig. 304.2 | TEMPERATURE RATING -65°C TO +105°C |
| Frequency Range (GHz) DC to <u>11</u> | Recommended Mating Torque <u>12-15 In Lbs</u> | Vibration MIL-STD-1344, Method 2005, Condition IV, 30g Peak |
| Volt Rating (VRMS MAX) @ Sea Level <u>600</u> | Mating Characteristics: Insertion (MAX Lbs) <u>2.0</u> | Shock MIL-STD-1344, Method 2004, Condition G |
| VSWR <u>1.07 + .007(f)GHz</u> | Withdrawal (MIN Oz) <u>2.0</u> | Thermal Shock MIL-STD-1344, Method 1003, Test Condition A, EXCEPT HIGH TEMP 115°C |
| Insertion Loss (dB MAX) <u>.03 √(f)GHz</u> | Force to Engage and Disengage (In/Lbs MAX) <u>6.0</u> | Corrosion - MIL-STD-1344, Method 1001, Condition B |
| RF Leakage (dB MIN) <u>-90dB</u> Between 2 to 3 GHz | Center Contact Captivation Axial (Lbs) <u>6.0</u> | |
| Corona, 70,000 Ft (VRMS MIN) <u>375</u> | Radial (In/Oz) <u>N/A</u> | |
| Dielectric Withstanding Voltage (VRMS MIN) @ Sea Level <u>1500</u> | Cable Retention Axial Force (Lbs) <u>60 Lbs Min</u> | |
| Contact Resistance (Milliohms MAX) Center Contact <u>1.5</u> | Torque (In/Oz) <u>55 In Oz Min</u> | |
| Outer Contact <u>2.0</u> | Weight (Grams) <u>TBD</u> | |
| RF High Potential @ Sea Level (VRMS MIN @ 5 MHz) <u>1000</u> | | |
| I.R.(Megohms MIN) <u>5000</u> | | |

1057159-1
PART NUMBER

| | | | | |
|--|------------------|-----------------------------|--------------------------------------|---------------|
| THIS DRAWING IS A CONTROLLED DOCUMENT. | | DWN 29MAR2012 C.C.THOMAS | | |
| DIMENSIONS: INCHES | | CHK 3-30-12 W.MOYER | | |
| TOLERANCES UNLESS OTHERWISE SPECIFIED: | | APVD 3-30-12 W.MOYER | NAME | |
| 0 PLC ± - | | PRODUCT SPEC | BULKHEAD FEEDTHROUGH CABLE JACK ASSY | |
| 1 PLC ± - | | APPLICATION SPEC | N SERIES, DIRECT SOLDER ATTACHMENT | |
| 2 PLC ± - | | | SIZE | CAGE CODE |
| 3 PLC ± .005 [0.13] | | | A2 | 00779 |
| 4 PLC ± - | | | DRAWING NO | RESTRICTED TO |
| ANGLES ± 1° | | | C=1057159 | - |
| MATERIAL SEE TABLE | FINISH SEE TABLE | WEIGHT - | SCALE 4:1 | SHEET 1 of 1 |
| | | CUSTOMER DRAWING | REV B | |