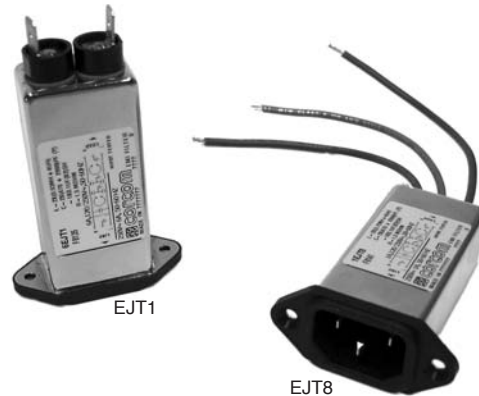


# EJT Series



**UL Recognized  
CSA Certified  
VDE Approved**

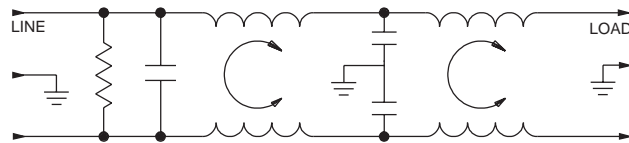


## EJT Series

The EJT Series is a power inlet filter designed to attenuate noise up to 1 GHz. This inlet uses an IEC 320/C14 input connector which gives it a maximum rating of 15 amps\*. The EJT series is flange-mounted with optional outputs of 1/4" terminals or wire leads. This product was designed to address the demand for more noise attenuation at higher frequencies in a compact inlet.

\*10 amp max. according to VDE.

## Electrical Schematic



Resistor location for reference only.

## Specifications

**Maximum leakage current, each line-to-ground**  
 @ 120 VAC 60 Hz: .22 mA  
 @ 250 VAC 50 Hz: .38 mA

**Hipot rating (one minute):**  
 line-to-ground 2250 VDC  
 line-to-line 1450 VDC

**Operating frequency:** 50/60 Hz

**Rated voltage (max.):** 250 VAC

### Minimum insertion loss in dB:

Line-to-ground in 50 ohm circuit

Current Rating	Frequency-MHz							
	.15	.5	1	5	10	30	100	1000
1A	27	33	40	59	65	65	61	14
3A	22	30	34	57	63	69	61	10
6A	13	21	27	51	60	65	59	14
10A	7	14	21	43	52	61	61	14
15A	4	10	15	38	48	63	63	14

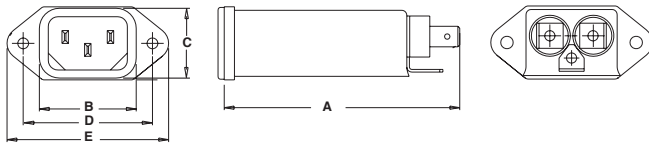
Line-to-line in 50 ohm circuit

Current Rating	Frequency-MHz							
	.15	.5	1	5	10	30	100	1000
1A	10	20	23	43	52	65	45	14
3A	10	20	24	41	51	59	52	17
6A	10	21	24	37	48	65	55	20
10A	10	21	25	28	44	63	53	18
15A	10	20	26	25	36	56	45	23

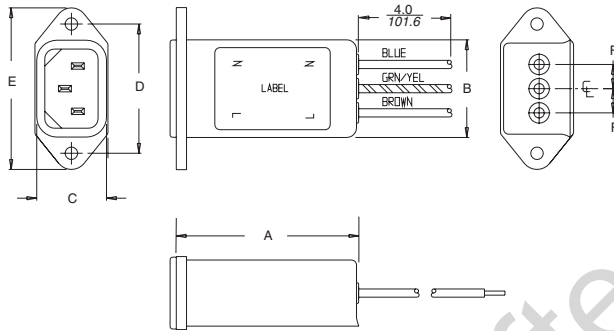
# EJT Series

## Case Styles

### EJT1



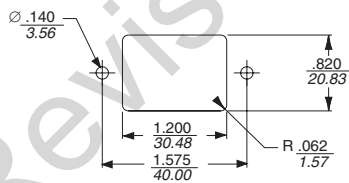
### EJT8



Typical dimensions:  
Wire Leads:

4.0 [101.6] Min. - 18 AWG

## Recommended Panel Cutout



Panel Cutout (front mount)

Tolerance ±.005 [0.13]

## Case Dimensions

Part No.	A (max)	B (max)	C (max)	D (max)	E (max)	F (max)
EJT1	2.87 72.9	1.19 30.2	0.875 22.2	1.575 40.0	1.98 50.3	—
EJT8	2.23 56.6	1.19 30.2	0.875 22.2	1.575 40.0	1.98 50.3	0.295 7.5

## Part Numbers

1EJT1	1EJT8
3EJT1	3EJT8
6EJT1	6EJT8
10EJT1	10EJT8
15EJT1	15EJT8
Line Cord No.	GA400