



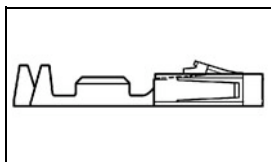
Have a Question?  
Chat with a Product  
Information Specialist

What can we help you find?

[Products](#) [Industries](#) [Resources](#) [About TE](#) [My Account](#) [Innovation](#) [Support Center](#)

## 1-104479-3 Product Details

[Share](#) [Print](#) [Email](#)



**1-104479-3**

TE Internal Number: 1-104479-3

Active

[View 3D PDF](#)

### .100 AMPMODU Headers, Housings & Contacts

Always EU RoHS/ELV Compliant (Statement of Compliance)

#### Product Highlights:

- Contact
- Contact Type = Socket
- Crimp Termination Method to Wire/Cable
- Applies To Wire/Cable
- Wire Insulation Diameter = .64 - 1.52 mm

[View all Features](#)

#### Quick Links

- ▶ [Pricing & Availability](#)
- ▶ [Search for Tooling](#)
- ▶ [Product Feature Selector](#)
- ▶ [Contact Us About This Product](#)

[Add to My Part List](#) [Request Sample](#) [Find Similar Products](#) [Buy Product](#)

Documentation & Additional Information	
<p><b>Product Drawings:</b></p> <ul style="list-style-type: none"> <li>• <a href="#">CONTACT, CRIMP SNAP-IN AMPMODU SHORT POINT, 20-24 AWG (PDF, English)</a></li> </ul> <p><b>Catalog Pages/Data Sheets:</b></p> <ul style="list-style-type: none"> <li>• <a href="#">AMPMODU_INTERCONNECTION_SYSTEM_SECTION5_CONT (PDF, English)</a></li> </ul> <p><b>Product Specifications:</b></p> <ul style="list-style-type: none"> <li>• <a href="#">Connector, Short Point, Power Receptacle Contact, Gold (PDF, English)</a></li> </ul> <p><b>Application Specifications:</b></p> <ul style="list-style-type: none"> <li>• <a href="#">AMPMODU Short Point Contacts and Housings (PDF, English)</a></li> </ul> <p><b>Instruction Sheets:</b></p> <ul style="list-style-type: none"> <li>• None Available</li> </ul> <p><b>CAD Files:</b> (<a href="#">CAD Format &amp; Compression Information</a>)</p> <ul style="list-style-type: none"> <li>• <a href="#">2D Drawing (DXF, Version R)</a></li> <li>• <a href="#">3D Model (IGES, Version R)</a></li> <li>• <a href="#">3D Model (STEP, Version R)</a></li> </ul>	<p><b>Additional Information:</b></p> <ul style="list-style-type: none"> <li>• <a href="#">Product Line Information</a></li> </ul> <p><b>Related Products:</b></p> <ul style="list-style-type: none"> <li>• <a href="#">Tooling</a></li> </ul>

[List all Documents](#)

Product Features (Please use the Product Drawing for all design activity)	
<p><b>Product Type Features:</b></p> <ul style="list-style-type: none"> <li>• Product Type = Contact</li> <li>• <a href="#">Termination Method to Wire/Cable</a> = Crimp</li> <li>• Wire Insulation Diameter (mm [in]) = 0.64 - 1.52 [0.025 - 0.060]</li> <li>• <a href="#">Connector Series</a> = Short Point</li> <li>• With Insulation Support = Yes</li> <li>• Applied Pressure = Standard</li> </ul> <p><b>Electrical Characteristics:</b></p> <ul style="list-style-type: none"> <li>• Contact - Rated Current (A) = 3</li> <li>• Voltage Rating (VAC) = 300</li> <li>• Termination Resistance (mΩ) = 12</li> <li>• Insulation Resistance (MΩ) = 5,000</li> <li>• Dielectric Withstanding Voltage (V) = 750</li> </ul> <p><b>Termination Features:</b></p> <ul style="list-style-type: none"> <li>• Crimp Area Plating = Tin</li> </ul> <p><b>Body Features:</b></p> <ul style="list-style-type: none"> <li>• <a href="#">Wire Range (mm [AWG])</a> = 0.20-0.60<sup>2</sup> [24-20]</li> </ul>	<p><b>Contact Features:</b></p> <ul style="list-style-type: none"> <li>• Contact Type = Socket</li> <li>• <a href="#">Contact Plating, Mating Area, Material</a> = Gold (30)</li> <li>• Contact Base Material = Copper Alloy C7025</li> </ul> <p><b>Industry Standards:</b></p> <ul style="list-style-type: none"> <li>• <a href="#">RoHS/ELV Compliance</a> = RoHS compliant, ELV compliant</li> <li>• <a href="#">Lead Free Solder Processes</a> = Not relevant for lead free process</li> <li>• RoHS/ELV Compliance History = Always was RoHS compliant</li> <li>• Approved Standards = CSA LR7189, UL E28476</li> </ul> <p><b>Environmental:</b></p> <ul style="list-style-type: none"> <li>• Operating Temperature (°C) = -65 - +105</li> </ul> <p><b>Conditions for Usage:</b></p> <ul style="list-style-type: none"> <li>• <a href="#">Applies To</a> = Wire/Cable</li> </ul> <p><b>Packaging Features:</b></p> <ul style="list-style-type: none"> <li>• Packaging Method = Loose Piece</li> </ul> <p><b>Other:</b></p> <ul style="list-style-type: none"> <li>• Brand = AMP</li> </ul>

### Corporate Information

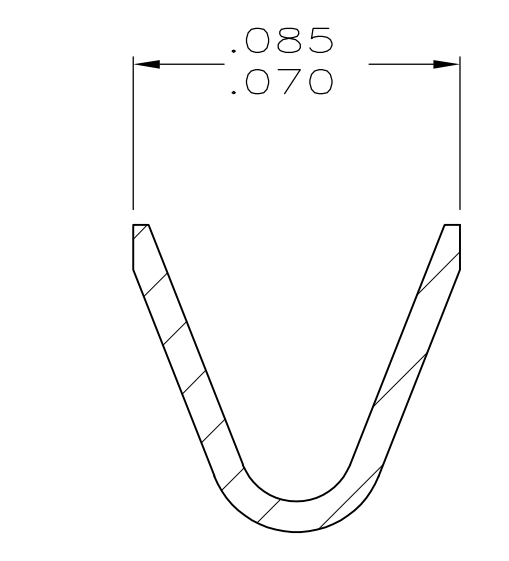
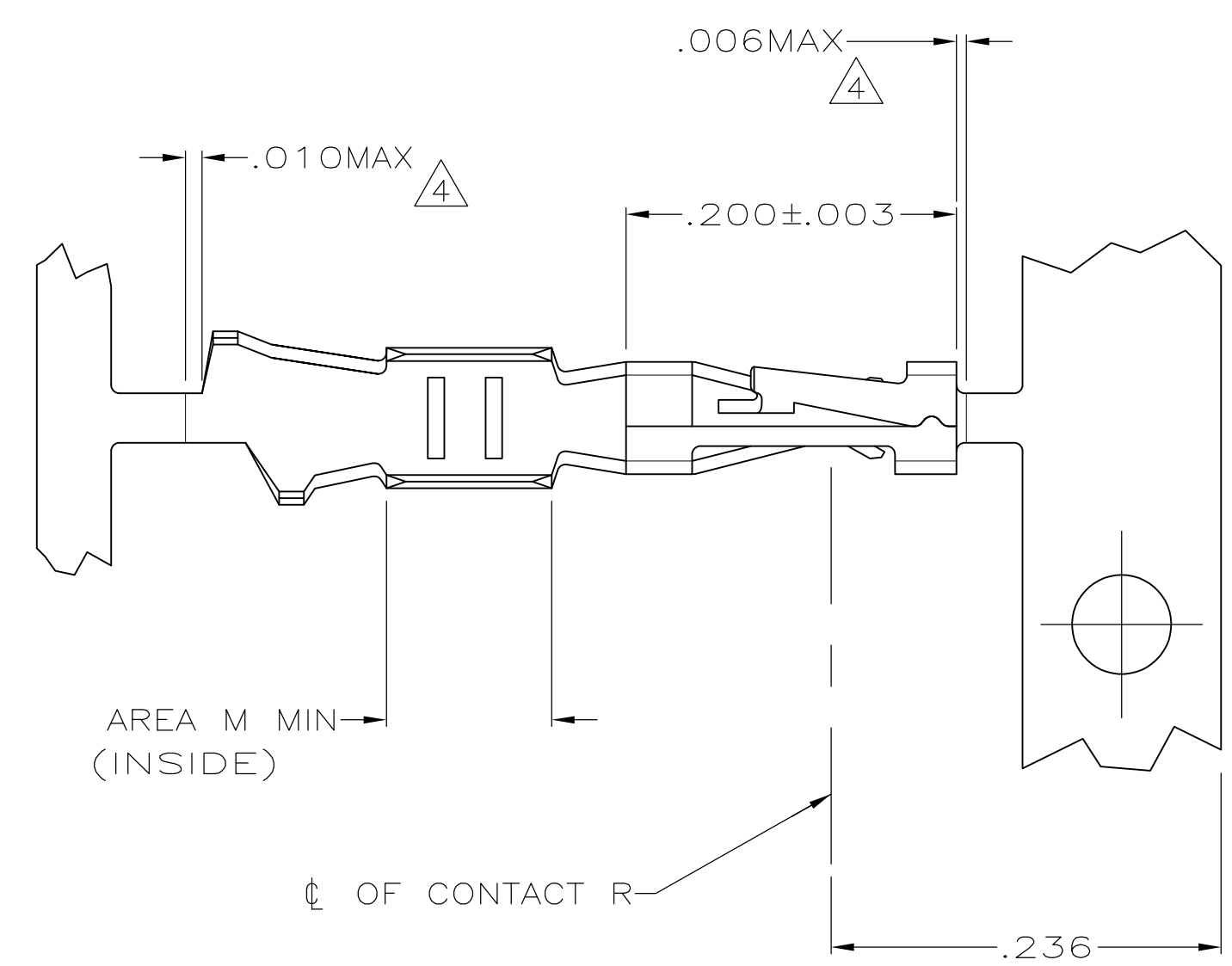
[About TE](#)  
[Investors](#)

### Quick Links

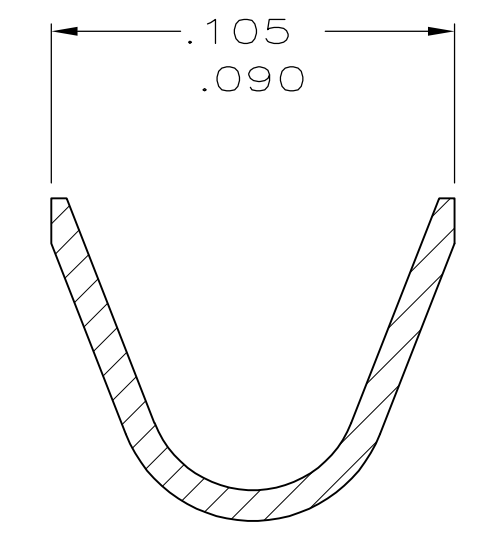
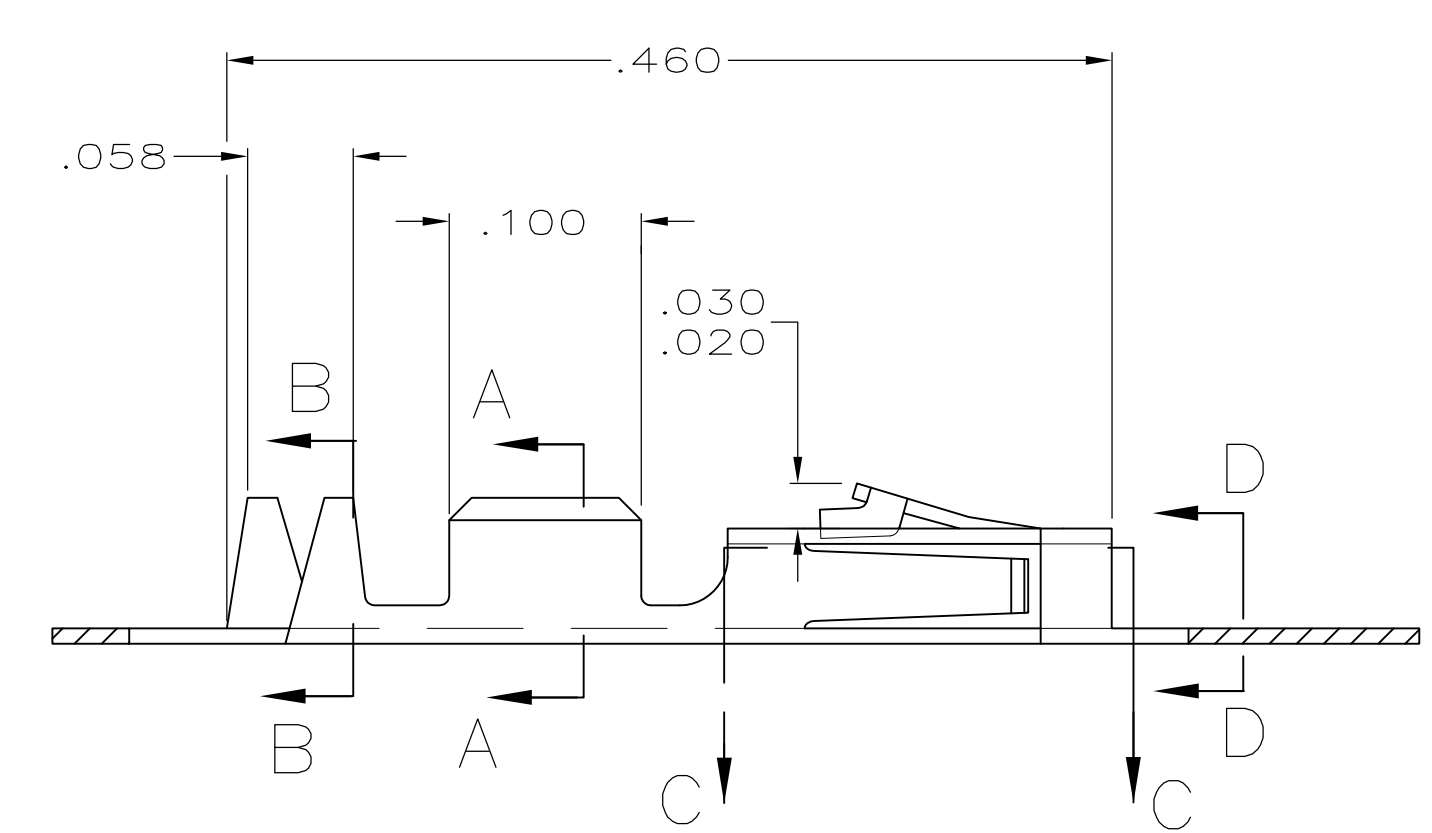
[Distributor Inventory](#)  
[Product Cross Reference](#)

### Customer Support

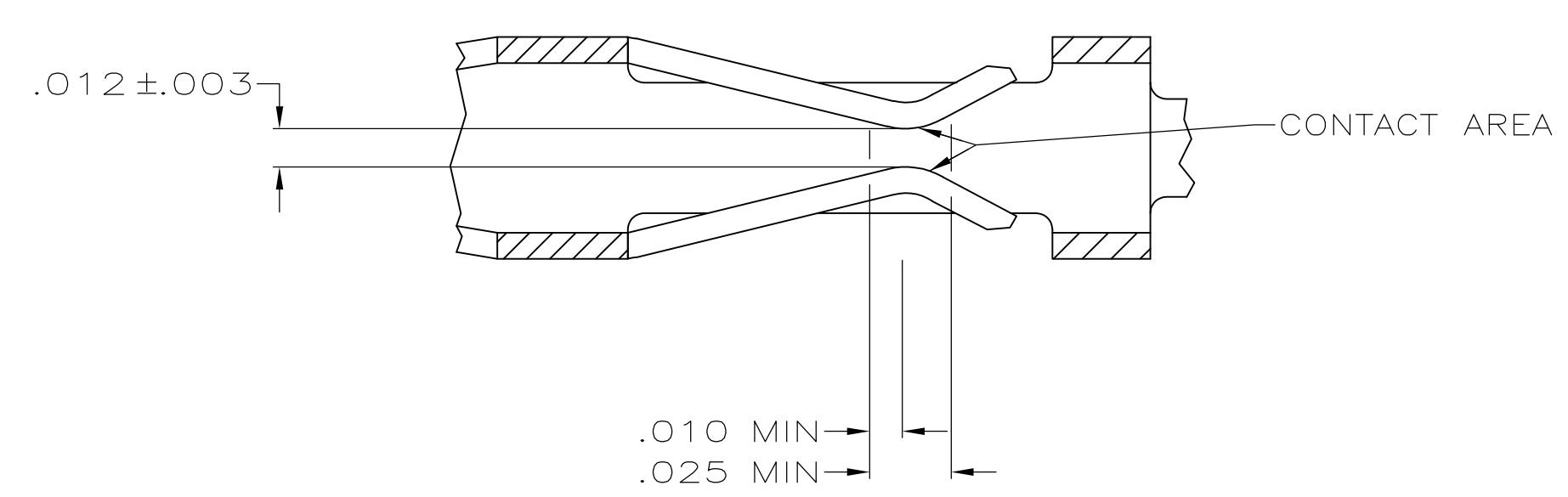
[Email or Chat With Us](#)  
[Find a Phone Number](#)



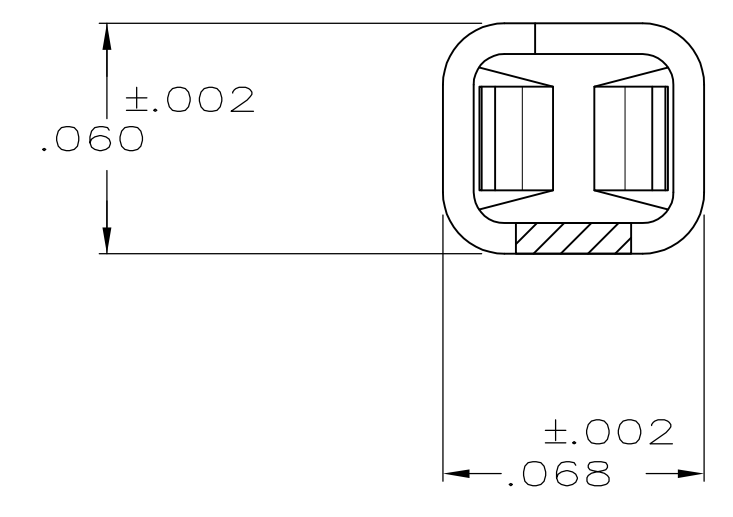
SECTION A-A  
SCALE 20:1



SECTION B-B  
INSULATION RANGE .025-.060  
SCALE 20:1



SECTION C-C  
SCALE 20:1



SECTION D-D  
SCALE 20:1

- 1 .000100 MIN BRIGHT TIN-LEAD OVER .000050 MIN NICKEL ON ENTIRE CONTACT
- 2 .000050 MIN NICKEL ON ENTIRE CONTACT; .000015 MIN GOLD ON CONTACT AREA; .000050 MIN BRIGHT TIN-LEAD ON AREA M.
- 3 .000050 MIN NICKEL ON ENTIRE CONTACT; .000030 MIN GOLD ON CONTACT AREA; .000050 MIN BRIGHT TIN-LEAD ON AREA M.
- 4 LOOSE PIECE CUT-OFF DIMENSION.
- 5 .000100-.000200 TIN OVER .000050-.000100 NICKEL ON ENTIRE CONTACT.
- 6 PREPLATED MATERIAL: (.000015 MIN GOLD ON CONTACT AREA, .000050-.000100 TIN ON AREA M, ALL OVER .000050-.000100 NICKEL ON ENTIRE CONTACT).
- 7 PREPLATED MATERIAL: (.000030 MIN GOLD ON CONTACT AREA, .000050-.000100 TIN ON AREA M, ALL OVER .000050-.000100 NICKEL ON ENTIRE CONTACT).

REMARKS	FINISH	PART NO
LOOSE PIECE	7	REF 1-104479-3
LOOSE PIECE	6	REF 1-104479-2
LOOSE PIECE	5	REF 1-104479-1
STRIP	7	1-104479-0
STRIP	6	104479-9
STRIP	5	104479-8
LOOSE PIECE	3	REF 104479-7
LOOSE PIECE	2	REF 104479-6
LOOSE PIECE	1	REF 104479-5
STRIP	3	104479-4
STRIP	2	104479-3
STRIP	1	104479-2

THIS DRAWING IS A CONTROLLED DOCUMENT.

DIMENSIONS: INCHES	TOLERANCES UNLESS OTHERWISE SPECIFIED:	DIN C. OBERMAN 5-9-89	DRW	C. OBERMAN	5-9-89
	0 PLC ± -	CHK K. HELM 5-12-89	APPV	K. HELM	5-12-89
	1 PLC ± -		NAME	R. RELICKER	5-12-89
	2 PLC ± -		PRODUCT SPEC	108-1472	
	3 PLC ± .005		APPLICATION SPEC	114-25038	
	4 PLC ± -		SIZE	A1	
	ANGLES ± -		WEIGHT	00779	
MATERIAL PHOSPHOR BRONZE	FINISH SEE TABLE		DRAWING NO	104479	
			RESTRICTED TO		

CUSTOMER DRAWING SCALE 10:1 SHEET 1 OF 1 REV 1