

HA.10/HD.15 Gehäuse/Housings

Baugröße/Size 2

Pulverbeschichtet, silbergrau

Powder-coated, silver-grey

Längsbügel am Unterteil/Side clip at housing bottom

IP 65

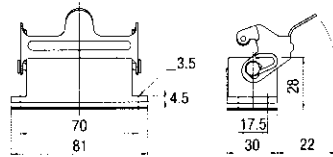
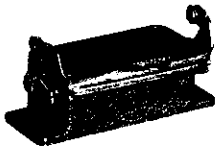
Bezeichnung
Description

Metr. PG

Bestelltext
Designation

Bestell-Nr.
Order No.

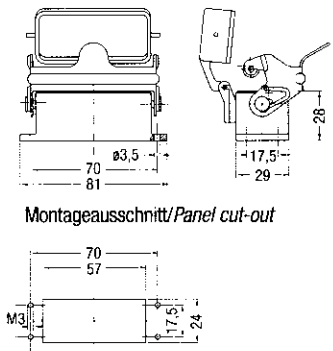
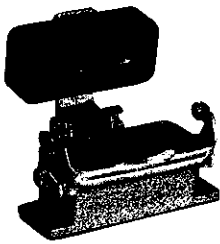
Anbaugehäuse: Kabeleingang unten, Standard Bauform
Surface mounted housing: Bottom entry, Standard construction



HA.10.AG-LB

1-1102121-2

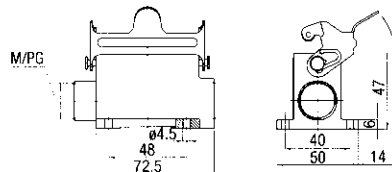
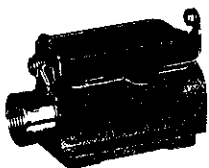
Anbaugehäuse: Kabeleingang unten, Standard Bauform
Surface mounted housing: Bottom entry, Standard construction



HA.10.AGD-LB

1-1102122-2

Sockelgehäuse: Kabeleingang seitlich, Standard Bauform
Surface mounted housing: Side entry, Standard construction

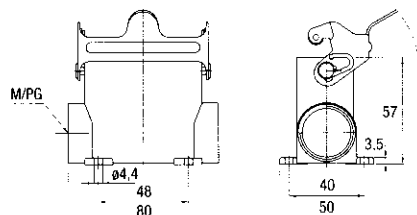
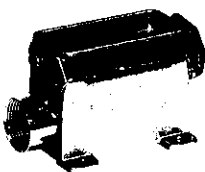


16
2x16
2xM20

HA.10.SG-LB.1.16.Z
HA.10.SG-LB.2.16.Z
HA.10.SG-LB.2.M20.Z

1-1102124-2
1-1102126-2
0-1106410-2

Sockelgehäuse: Kabeleingang seitlich, Hohe Bauform
Surface mounted housing: Side entry, High construction



16
21
2x16
2x21
2xM25

HD.15.SG-LB.1.16.Z
HD.15.SG-LB.1.21.Z
HD.15.SG-LB.2.16.Z
HD.15.SG-LB.2.21.Z
HD.15.SG-LB.2.M25.Z

1-1102438-2
1-1102442-2
1-1102440-2
1-1102444-2
0-1106413-2

Passende Kabelverschraubungen ab Seite 173/Suitable Cable fittings from page 173