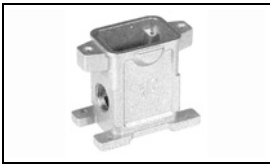


1106415-2 Product Details

[Share](#) [Print](#) [Email](#)



1106415-2

TE Internal Number: 1106415-2

 Active

[View 3D PDF](#)

HTS Connectors and Accessories

 Converted to EU RoHS/ELV Compliant
(Statement of Compliance)

Product Highlights:

- EMV Series
- Housing
- Product Size = 3
- Locking Device Type = Screw Lock on Hood
- Side Entry Style

[View all Features](#)

Quick Links

- ▶ [Pricing & Availability](#)
- ▶ [Search for Tooling](#)
- ▶ [Product Feature Selector](#)
- ▶ [Contact Us About This Product](#)

[Add to My Part List](#)

[Request Sample](#)

[Find Similar Products](#)

[Buy Product](#)

Documentation & Additional Information

Product Drawings:

- [Surface mounted housing bottom entry \(PDF, English\)](#)

Catalog Pages/Data Sheets:

- [HTS Heavy Duty Connectors catalogue \(PDF, English\)](#)

Product Specifications:

- None Available

Application Specifications:

- None Available

Instruction Sheets:

- None Available

CAD Files: [\(CAD Format & Compression Information\)](#)

- [2D Drawing \(DXF, Version A\)](#)
- [3D Model \(IGES, Version A\)](#)
- [3D Model \(STEP, Version A\)](#)

[List all Documents](#)

Additional Information:

- [Product Line Information](#)

Related Products:

- [Tooling](#)

Product Features (Please use the Product Drawing for all design activity)

Product Type Features:

- Product Type = Housing
- Product Size = 3
- [Thread Size](#) = 2xM32
- Finish = Black

Body Features:

- Entry Style = Side
- Dimensions (L x H x W) (mm [in]) = 90.0 x 80.0 x 56.0 [3.54 x 3.15 x 2.20]
- Material = Die Cast Aluminum

Contact Features:

- Corrosion Protected = Yes

Configuration Features:

- Locking Device Type = Screw Lock on Hood

Industry Standards:

- [RoHS/ELV Compliance](#) = RoHS compliant, ELV compliant
- [Lead Free Solder Processes](#) = Not relevant for lead free process
- RoHS/ELV Compliance History = Converted to comply with RoHS directive

Packaging Features:

- Packaging Method = Loose Piece
- Packaging Quantity = 5

Other:

- [Series](#) = EMV
- Brand = HTS
- Comment = Protection against electro-magnetic interference, pressure-tight

Corporate Information

- [About TE](#)
- [Investors](#)
- [News Room](#)
- [Supplier Portal](#)
- [Careers](#)
- [Terms & Conditions](#)
- [Privacy Policy](#)

Quick Links

- [Distributor Inventory](#)
- [Product Cross Reference](#)
- [Documents & Drawings](#)
- [Product Compliance Support Center](#)
- [Site Map](#)

Customer Support

- [Email or Chat With Us](#)
- [Find a Phone Number](#)
- [Knowledge Base](#)
- [Manage Your Account](#)

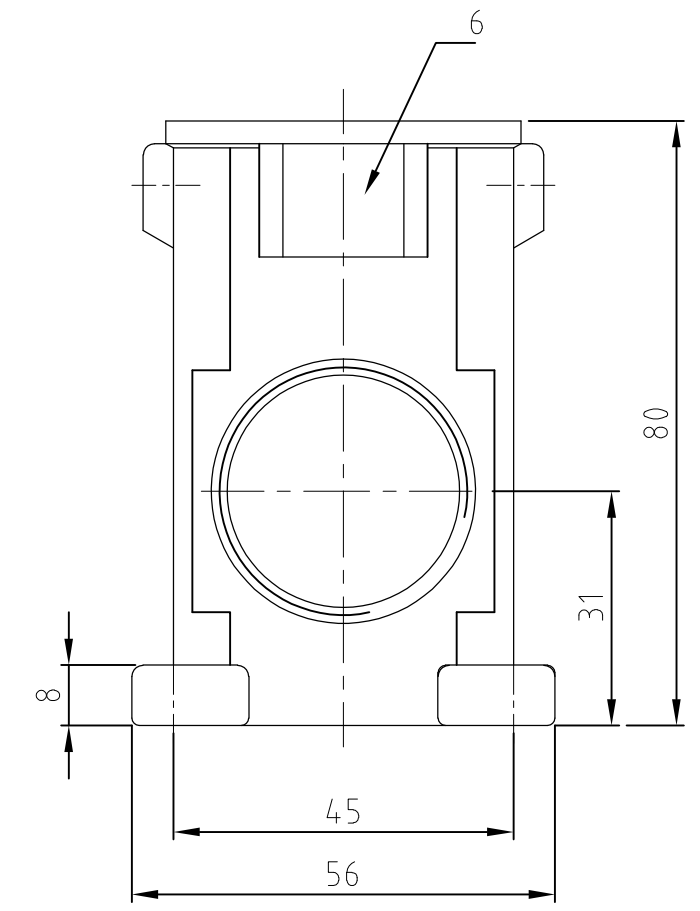
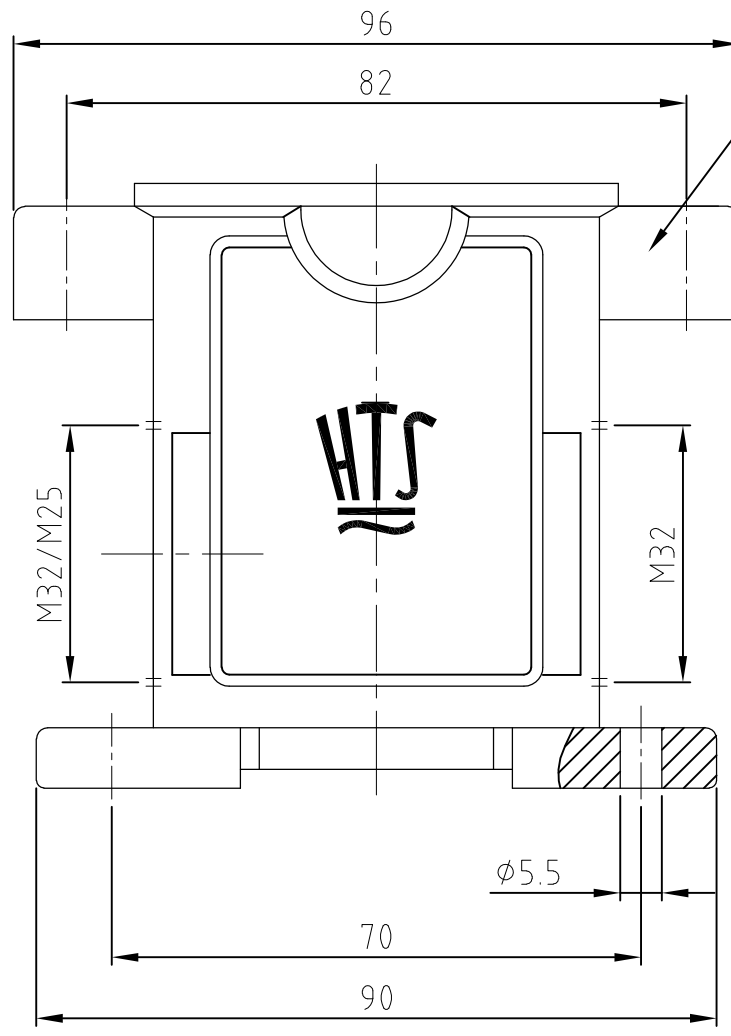
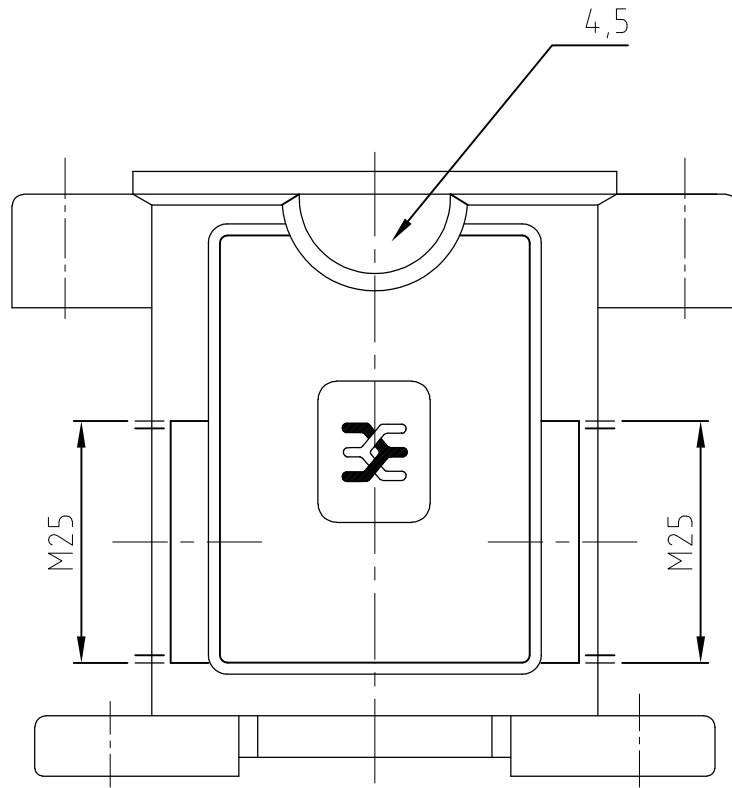
Keep Me Informed

4

3

2

1



Notes

- ① Material: Housing: aluminium diecasting alloy
- ② Surface: grey
chromitAL TCP passivation + Varnisch black
- ③ Varnisch on the inside not necessarily
- ④ Verpackung: 5 Stück
- ⑤ Verpackung: 50 Stück

Bemerkungen

- ① Material: Gehäuse: Alu-Druckguß-Legierung
- ② Oberfläche: grau
chromitAL TCP passivation + Lackierung schwarz
- ③ Lackierung im Gehäuseinnere ist nicht notwendig
- ④ Packaging: 5 pieces
- ⑤ Packaging: 50 pieces

1					Socketgehäuse HIP-K.6/16	aluminium/ALU	HC	black/schwarz	6	ohne Logo / Bohrung	⑤
	1				Socketgehäuse HIP-K.6/16	aluminium/ALU	HC	black/schwarz	5	Sonder/special	⑤
		1			Socketgehäuse EMV-K.6/16	aluminium/ALU	SEE NOTE ②	black/schwarz	4	Sonder/special	⑤
			1		Socketgehäuse EMV-K.6/16	aluminium/ALU	SEE NOTE ②	black/schwarz	3		④
				1	Socketgehäuse EMV-K.6/16	aluminium/ALU	SEE NOTE ②	black/schwarz	2		④
				1	Socketgehäuse EMV.6/16	aluminium/ALU		grey/grau	1		④
0-6	0-5	0-4	0-3	0-2	0-1	DESCRIPTION / BENENNUNG	MATERIAL	SURFACE / OBERFLÄCHE	COLOR / FARBE	ITEM NO. POS.	NOTES / BEMERKUNGEN

ORDERING TEXT / BESTELLTEXT	THIS DRAWING IS A CONTROLLED DOCUMENT FOR AMP INCORPORATED. IT IS SUBJECT TO CHANGE AND THE CONTROLLING ENGINEERING ORGANIZATION SHOULD BE CONTACTED FOR THE LATEST REVISION. DIESES ZEICHNUNGSDOKUMENT WIRD DURCH AMP INCORPORATED KONTROLLIERT. AENDERUNGEN, DIE DEM TECHNISCHEN FORTSCHRITT DIENEN, SIND VORBEHALTEN. DEN JEWEILS LETZTGUELTIGEN AENDERUNGSSTAND ERFAHREN SIE AUF ANFRAGE.		DWN Schneider 03.09.01	HTS Elektrotechnik 53819 Neunkirchen, Germany	
	DIMENSIONS: DIMENSIONEN: mm 		CHK Schweiger 03.09.01		
	TOLERANCES UNLESS OTHERWISE SPECIFIED: ALLGEMEINTOLERANZEN ISO 8015 0 PLC #- 1 PLC #- 2 PLC #- 3 PLC #- ANGLES / WINKEL #- FINISH / OBERFLAECHE / FARBE		APVD -		NAME Surface mounted housing side entry EMV Socketgehäuse EMV.6/16.SG.2.M32.G
	MATERIAL		PRODUCT SPEC PRODUKTSPEZ. -		APPLICATION SPEC VERARBEITUNGSSPEZ. -
			WEIGHT GEWICHT -	DRAWING NO ZEICHNUNGS-NR. C=1106415	
			CUSTOMER DRAWING	RESTRICTED TO NUR FUER -	
			/KUNDENZEICHNUNG	MASSSTAB 1:1	
				BLATT 1 OF VON 1	
				REV A5	