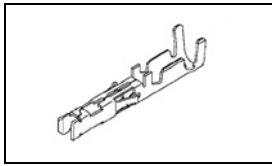


1-106529-2 Product Details

[Share](#) [Print](#) [Email](#)



1-106529-2

TE Internal Number: 1-106529-2
 Active

[View 3D PDF](#)

4.2mm & 4.4mm Centerline, 600 V, 9 A max. Dual Action

Always EU RoHS/ELV Compliant (Statement of Compliance)

Product Highlights:

- Contact
- AMP-DUAC
- Contact Type = Socket
- Wire Range = 0.30-0.90² [22-18] mm [AWG]
- 0 Power Positions

[View all Features](#)

Quick Links

- ▶ [Pricing & Availability](#)
- ▶ [Search for Tooling](#)
- ▶ [Product Feature Selector](#)
- ▶ [Contact Us About This Product](#)

[Add to My Part List](#) [Request Sample](#) [Find Similar Products](#) [Buy Product](#)

Documentation & Additional Information

Product Drawings:

- [SOCKET CONTACT AMP-DUAC](#) (PDF, English)

Catalog Pages/Data Sheets:

- [SOFT_SHELL_PIN_AND_SOCKET_CONNECTORS_CATALOG](#) (PDF, English)

Product Specifications:

- [AMP DUAC Socket Connector](#) (PDF, English)

Application Specifications:

- [AMP-DUAC Headers and Connectors](#) (PDF, English)

Instruction Sheets:

- None Available

CAD Files: (CAD Format & Compression Information)

- [2D Drawing](#) (DXF, Version H)
- [3D Model](#) (IGES, Version H)
- [3D Model](#) (STEP, Version H)

[List all Documents](#)

Additional Information:

- [Product Line Information](#)

Related Products:

- [Tooling](#)

Product Features (Please use the Product Drawing for all design activity)

Product Type Features:

- [Product Type](#) = Contact
- [Connector Line](#) = AMP-DUAC

Dimensions:

- [Insulation Diameter \(mm \[in\]\)](#) = 1.50 - 2.40 [.059-.094]

Body Features:

- [Wire Range \(mm \[AWG\]\)](#) = 0.30-0.90² [22-18]

Contact Features:

- [Contact Type](#) = Socket
- [Contact Plating, Mating Area, Material](#) = Pre-Tin
- [Contact Material \(Signal\)](#) = Phosphor Bronze

Configuration Features:

- [Number of Power Positions](#) = 0

Industry Standards:

- [RoHS/ELV Compliance](#) = RoHS compliant, ELV compliant
- [Lead Free Solder Processes](#) = Not relevant for lead free process
- [RoHS/ELV Compliance History](#) = Always was RoHS compliant

Conditions for Usage:

- [Applies To](#) = Printed Circuit Board

Packaging Features:

- [Packaging Method](#) = Loose Piece

Other:

- [Brand](#) = AMP

Corporate Information

- [About TE](#)
- [Investors](#)
- [News Room](#)
- [Supplier Portal](#)
- [Careers](#)
- [Terms & Conditions](#)
- [Privacy Policy](#)

Quick Links

- [Distributor Inventory](#)
- [Product Cross Reference](#)
- [Documents & Drawings](#)
- [Product Compliance Support Center](#)
- [Site Map](#)

Customer Support

- [Email or Chat With Us](#)
- [Find a Phone Number](#)
- [Knowledge Base](#)
- [Manage Your Account](#)

Keep Me Informed

THIS DRAWING IS UNPUBLISHED. RELEASED FOR PUBLICATION
 © COPYRIGHT - By - ALL RIGHTS RESERVED.

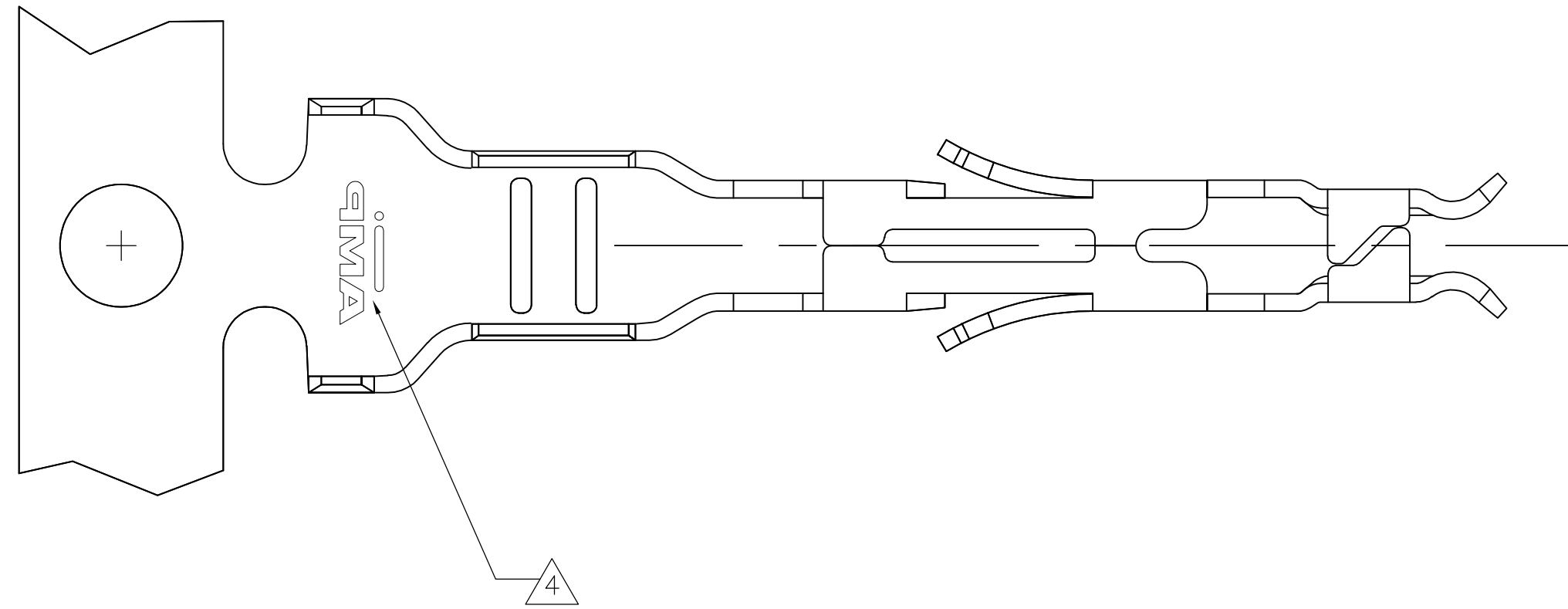
LOC		DIST		REVISIONS			
P	LTR	DESCRIPTION		DATE	DWN	APVD	
CM	00	H1	REVISED PER ECO-11-004917		11MAR11	RK	HMR

D

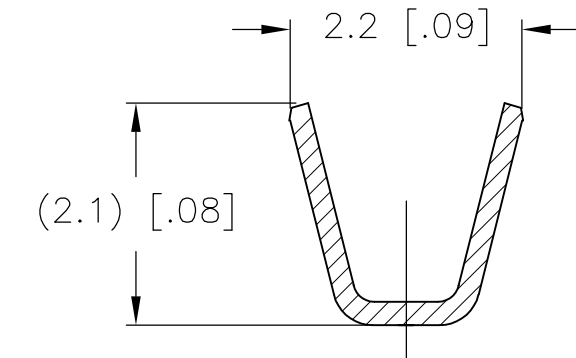
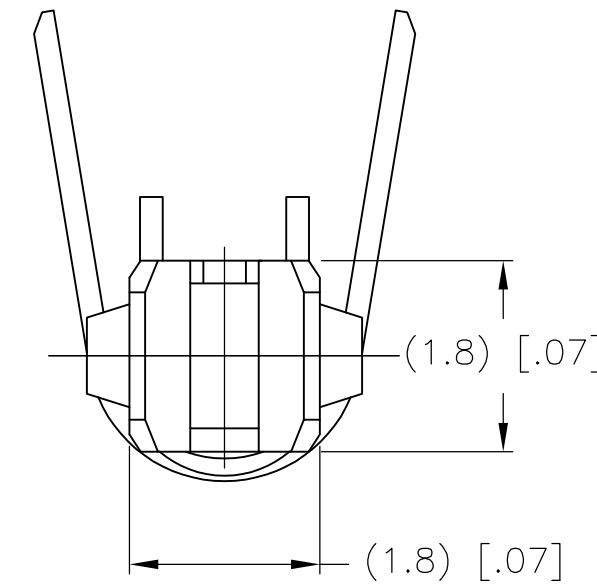
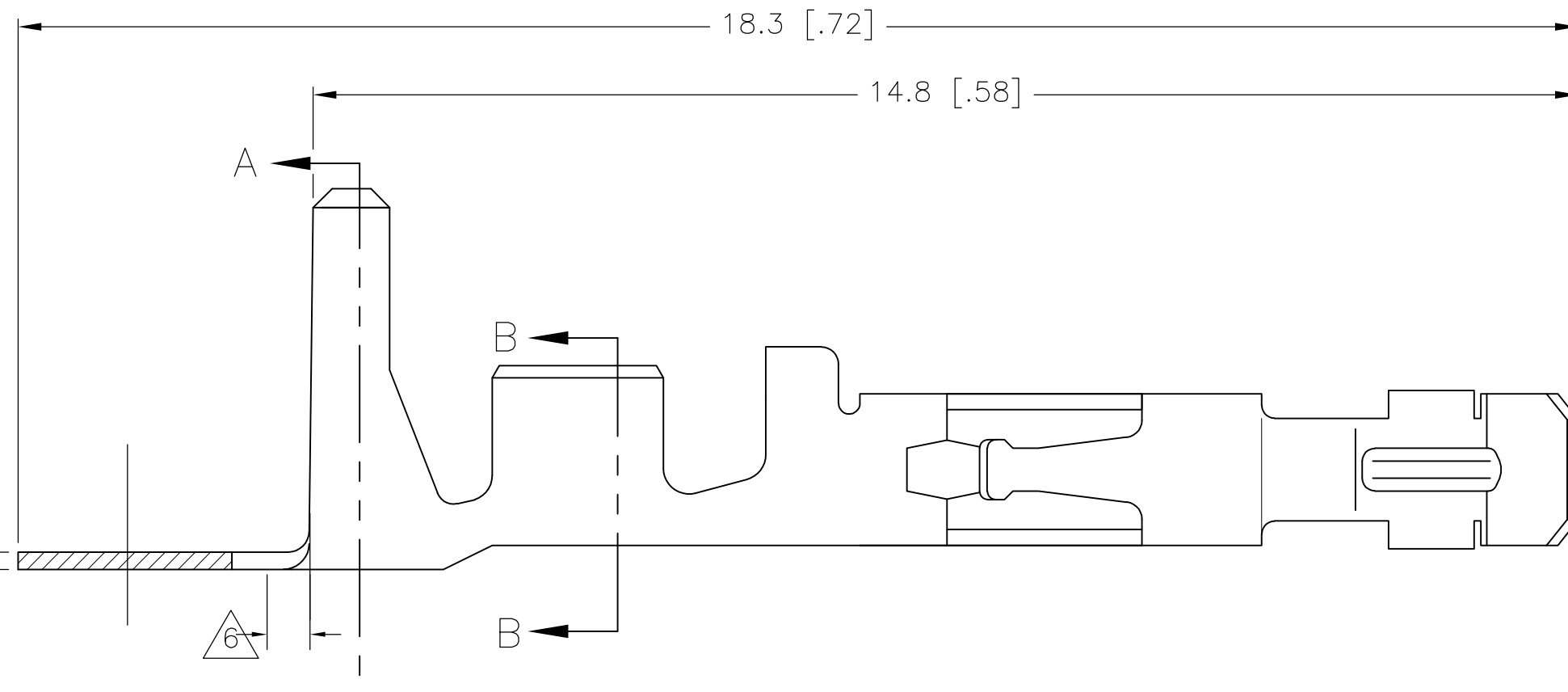
C

B

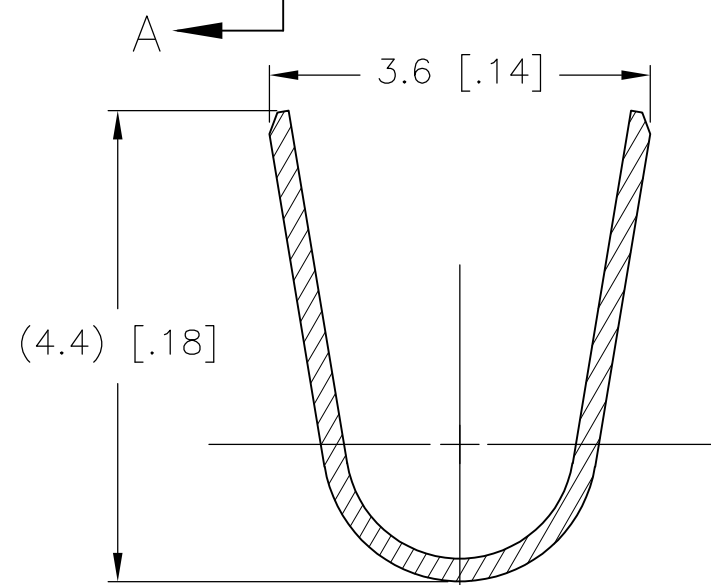
A



- HAND TOOL PART NUMBER 734202-2.
- EXTRACTION TOOL PART NUMBER 188688-1
- LOOSE PIECE CONTACT
- AMP TRADEMARK
- MATERIAL PHOSPHOR BRONZE PRETINNED 1-3μm
- CUT OFF DIMENSION FOR LOOSE PIECE CONTACT 0.5 [.02] MAXIMUM.
- WIRE RANGE: 0.30-0.87mm² [.012-.034in²], (18-22 AWG).
- INSULATION RANGE: 1.50-2.40 [.059-.094] DIAMETER.

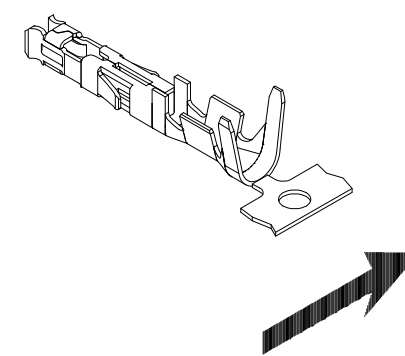


SECTION B-B
SCALE 14:1



SECTION A-A
SCALE 14:1

DIRECTION OFF TOP OF REEL



THIS DRAWING IS A CONTROLLED DOCUMENT.	
DIMENSIONS: mm [INCHES]	TOLERANCES UNLESS OTHERWISE SPECIFIED: 0 PLC ± 1 PLC ± 2 PLC ± 0.10 [.004] 3 PLC ± 4 PLC ± ANGLES ±
MATERIAL SEE CHART	FINISH SEE CHART

DWN S. HOOVER 29-JAN-2004	CHK D. COLEY 29-JAN-2004	APVD D. COLEY 29-JAN-2004	NAME SOCKET CONTACT AMP-DUAC™
SIZE A2	CAGE CODE 00779	DRAWING NO C=106529	RESTRICTED TO -
CUSTOMER DRAWING		SCALE 14:1	SHEET 1 OF 1
		REV H1	

3	PRETINNED	PHOSPHOR BRONZE	1-106529-2
	PRETINNED	PHOSPHOR BRONZE	106529-2
	FINISH	MATERIAL	PART NUMBER

