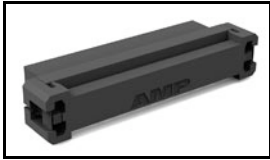


1-111623-8 Product Details

[Share](#) [Print](#) [Email](#)



1-111623-8

TE Internal Number: 1-111623-8

Active

[View 3D PDF](#)

AMP-LATCH Ribbon Cable Connectors

Always EU RoHS/ELV Compliant
(Statement of Compliance)

Product Highlights:

- AMP-LATCH Product Line
- Wire-to-Board
- Applies To Wire/Cable
- Connector Assembly
- Connector Style = Receptacle

[View all Features](#)

Quick Links

- ▶ [Pricing & Availability](#)
- ▶ [Search for Tooling](#)
- ▶ [View Mating Products \(5\)](#)
- ▶ [Product Feature Selector](#)
- ▶ [Contact Us About This Product](#)

[Add to My Part List](#)

[Request Sample](#)

[Find Similar Products](#)

[Buy Product](#)

Documentation & Additional Information

Product Drawings:

- [RECEPTACLE ASSY, POLARIZED, 2mm CL, AMP-LATCH \(PDF, English\)](#)

Catalog Pages/Data Sheets:

- [Ribbon Cable Interconnect Solutions \(PDF, English\)](#)

Product Specifications:

- [2 mm AMP-LATCH Ribbon Cable Receptacle Connector \(PDF, English\)](#)

Application Specifications:

- [AMP-LATCH 2 mm Receptacle Connectors \(PDF, English\)](#)

Instruction Sheets:

- [Connector-Specific Kit 768963-1 for AMP-LATCH 2 mm R... \(PDF, English\)](#)

CAD Files: (CAD Format & Compression Information)

- [2D Drawing \(DXF, Version L1\)](#)
- [3D Model \(IGES, Version L1\)](#)
- [3D Model \(STEP, Version L1\)](#)

[List all Documents](#)

Additional Information:

- [Product Line Information](#)

Related Products:

- [Tooling](#)
- [Mating Products \(5\)](#)

Product Features (Please use the Product Drawing for all design activity)

Product Type Features:

- Product Line = AMP-LATCH
- Connector Type = Connector Assembly
- UL File Number = E28476
- CSA File Number = LR 7189

Electrical Characteristics:

- Contact - Rated Current (A) = 0.5
- Operating Voltage Reference = AC
- Operating Voltage (VAC) = 125

Termination Features:

- Wire/Cable Size (AWG) = 28
- Wire/Cable Size (mm²) = 0.08
- Wire/Cable Size (CMA) = 158
- Termination Method to Wire/Cable = Insulation Displacement Crimp (IDC)

Configuration Features:

- [Number of Positions](#) = 10
- [Number of Rows](#) = 2

Industry Standards:

- [RoHS/ELV Compliance](#) = RoHS compliant, ELV compliant
- [Lead Free Solder Processes](#) = Not relevant for lead free process
- [RoHS/ELV Compliance History](#) = Always was RoHS compliant
- [Agency/Standard](#) = CSA, UL
- [UL Rating](#) = Recognized
- [UL Voltage Rating \(VAC\)](#) = 125

Environmental:

- [Operating Temperature \(°C \[°F\]\)](#) = -65 - +105 [-85 - +221]

| | |
|---|--|
| <p>Dimensions:</p> <ul style="list-style-type: none"> Length (X-Axis) (mm [in]) = 15.16 [0.5968] Width (Z-Axis) (mm [in]) = 5.58 [0.2197] Profile Height (Y-Axis) (mm [in]) = 8.48 [0.3339] <p>Body Features:</p> <ul style="list-style-type: none"> Row-to-Row Spacing (mm [in]) = 2.54 [0.100] Mating Retention = Without <p>Contact Features:</p> <ul style="list-style-type: none"> Contact Design = Single Beam Contact Type = Socket Contact Base Material = Phosphor Bronze Contact Plating, Mating Area, Material = Gold or Palladium Nickel or Performance Based Contact Plating, Mating Area, Thickness (μm [μin]) = 0.76 [29.92] <p>Housing Features:</p> <ul style="list-style-type: none"> Connector Style = Receptacle Centerline (mm [in]) = 2.00 [0.079] Mating Alignment = With Mating Alignment Type = Polarization Housing Color = Black UL Flammability Rating = UL 94V-0 | <p>Conditions for Usage:</p> <ul style="list-style-type: none"> Applies To = Wire/Cable Accepts Wire Insulation Diameter, Range (mm [in]) = 0.71 – 0.87 [0.028 – 0.034] <p>Operation/Application:</p> <ul style="list-style-type: none"> Application Use = Wire-to-Board Contact Transmits (Typical Application) = Signal (Data) <p>Packaging Features:</p> <ul style="list-style-type: none"> Packaging Method = Tray <p>Other:</p> <ul style="list-style-type: none"> Series = 2.0 [.079] AMP-LATCH Brand = AMP |
|---|--|

Corporate Information

[About TE](#)
[Investors](#)
[News Room](#)
[Supplier Portal](#)
[Careers](#)
[Terms & Conditions](#)
[Privacy Policy](#)

Quick Links

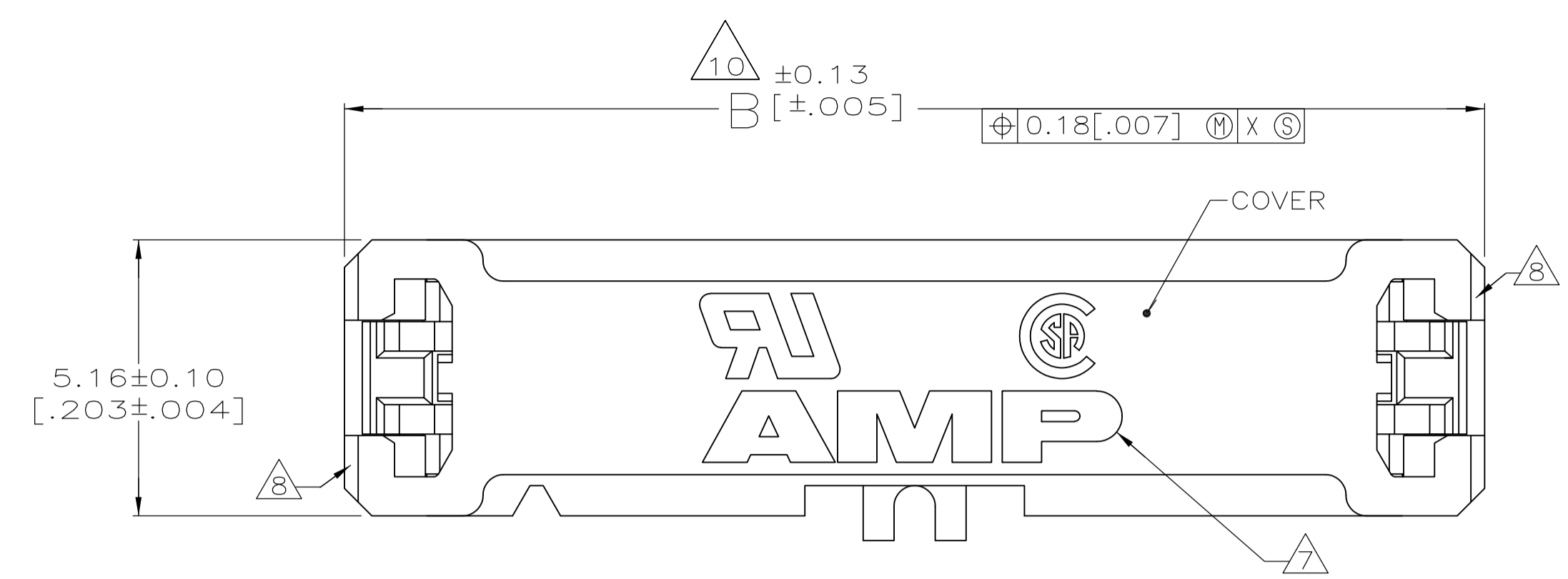
[Distributor Inventory](#)
[Product Cross Reference](#)
[Documents & Drawings](#)
[Product Compliance Support Center](#)
[Site Map](#)

Customer Support

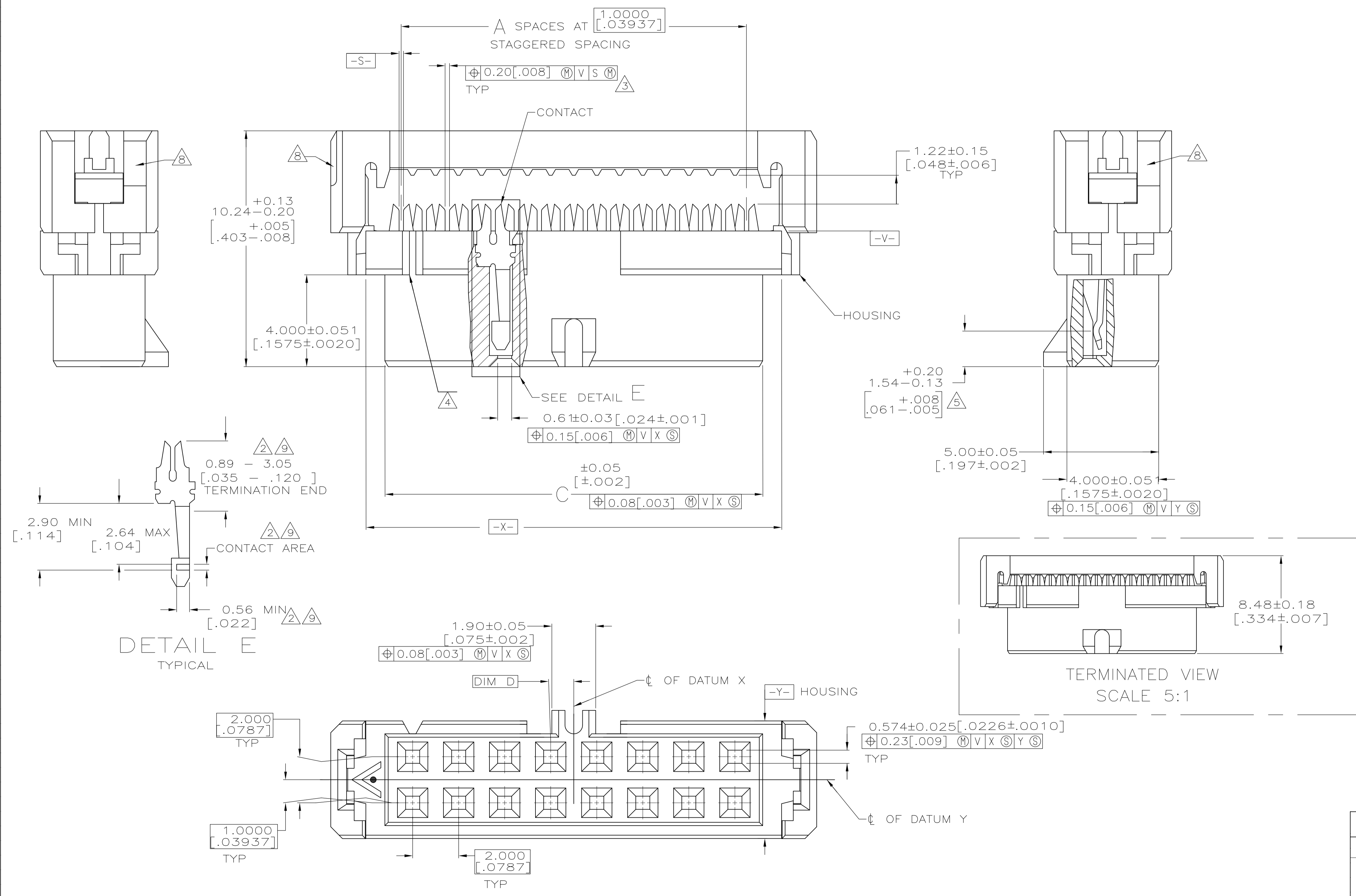
[Email or Chat With Us](#)
[Find a Phone Number](#)
[Knowledge Base](#)
[Manage Your Account](#)

Keep Me Informed





- 1 MOLDED PARTS: POLYESTER, UL RATED 94V-0, BLACK. CONTACTS: BERYLLIUM COPPER.
- 2 2.54 μm [.000100] MIN TIN-LEAD ON TERMINATION END, 0.76 μm [.000030] MIN GOLD ON CONTACT AREA, ALL OVER 1.27 μm [.000050] MIN NICKEL.
- 3 POSITION TOLERANCE APPLIES 0.76 [.030] ABOVE DATUM V.
- 4 POSITION NUMBER 1 INDICATOR.
- 5 ELECTRICAL ENGAGEMENT ZONE.
- 6 RECOMMENDED 28 AWG RIBBON CABLE, 0.61 - 0.97 [.024 - .038] THICK PVC, 1.0000 [.03937] PITCH. AMP LOGO ORIENTATION IS OPTIONAL.
- 7 AMP LOGO ORIENTATION IS OPTIONAL.
- 8 RECESS ON EACH END, OPPOSITE CORNER.
- 9 0.13 μm [.000005] MIN GOLD ON TERMINATION END, 0.76 μm [.000030] MIN GOLD ON CONTACT AREA, ALL OVER 1.27 μm [.000050] MIN NICKEL.
- 10 MOLD GATE PROJECTION ON EITHER END OF COVER TO BE EXCLUDED FROM DIMENSION 'B' MEASUREMENT.



| CONTACT FINISH | D | C | B | A | NO OF POSN | PART NO |
|----------------|-------|-------|----|----|------------|---------|
| | 12.40 | 17.15 | 11 | 12 | 3-111623-1 | |
| | 12.40 | 17.15 | 11 | 12 | 1-111623-7 | |
| | 8.41 | 13.18 | 7 | 8 | 1-111623-6 | |
| | 8.41 | 13.18 | 7 | 8 | 1-111623-5 | |
| | 22.40 | 27.18 | 21 | 22 | 1-111623-5 | |
| | 22.40 | 27.18 | 21 | 22 | 1-111623-4 | |
| | 34.42 | 39.17 | 33 | 34 | 1-111623-8 | |
| | 34.42 | 39.17 | 33 | 34 | 1-111623-7 | |
| | 24.41 | 29.18 | 23 | 24 | 1-111623-7 | |
| | 24.41 | 29.18 | 23 | 24 | 1-111623-5 | |
| | 50.39 | 55.17 | 49 | 50 | 1-111623-6 | |
| | 50.39 | 55.17 | 49 | 50 | 1-111623-4 | |
| | 44.40 | 49.17 | 43 | 44 | 1-111623-5 | |
| | 44.40 | 49.17 | 43 | 44 | 1-111623-3 | |
| | 40.41 | 45.19 | 39 | 40 | 1-111623-4 | |
| | 40.41 | 45.19 | 39 | 40 | 1-111623-2 | |
| | 30.40 | 35.18 | 29 | 30 | 1-111623-3 | |
| | 30.40 | 35.18 | 29 | 30 | 1-111623-2 | |
| | 20.40 | 25.17 | 19 | 20 | 1-111623-1 | |
| | 20.40 | 25.17 | 19 | 20 | 1-111623-0 | |
| | 16.41 | 21.18 | 15 | 16 | 1-111623-0 | |
| | 16.41 | 21.18 | 15 | 16 | 1-111623-9 | |
| | 14.40 | 19.18 | 13 | 14 | 1-111623-9 | |
| | 14.40 | 19.18 | 13 | 14 | 1-111623-8 | |
| | 10.41 | 15.16 | 9 | 10 | 1-111623-8 | |
| | 10.41 | 15.16 | 9 | 10 | 1-111623-7 | |
| | 10.41 | 15.16 | 9 | 10 | 1-111623-6 | |
| | 10.41 | 15.16 | 9 | 10 | 1-111623-5 | |
| | 10.41 | 15.16 | 9 | 10 | 1-111623-4 | |
| | 10.41 | 15.16 | 9 | 10 | 1-111623-3 | |
| | 10.41 | 15.16 | 9 | 10 | 1-111623-2 | |
| | 10.41 | 15.16 | 9 | 10 | 1-111623-1 | |
| | 10.41 | 15.16 | 9 | 10 | 111623-9 | |
| | 10.41 | 15.16 | 9 | 10 | 111623-8 | |
| | 10.41 | 15.16 | 9 | 10 | 111623-7 | |
| | 10.41 | 15.16 | 9 | 10 | 111623-6 | |
| | 10.41 | 15.16 | 9 | 10 | 111623-5 | |
| | 10.41 | 15.16 | 9 | 10 | 111623-4 | |
| | 10.41 | 15.16 | 9 | 10 | 111623-3 | |
| | 10.41 | 15.16 | 9 | 10 | 111623-2 | |
| | 10.41 | 15.16 | 9 | 10 | 111623-1 | |

THIS DRAWING IS A CONTROLLED DOCUMENT. DIMENSIONS: mm [INCHES]. TOLERANCES UNLESS OTHERWISE SPECIFIED: 0 PLC ± .008 [0.03], 1 PLC ± .008 [0.03], 2 PLC ± .008 [0.03], 3 PLC ± .008 [0.03], 4 PLC ± .008 [0.03]. MATERIAL: POLYESTER. FINISH: CONTACTS: SEE TABLE. THIS DRAWING IS A CONTROLLED DOCUMENT. DIMENSIONS: mm [INCHES]. TOLERANCES UNLESS OTHERWISE SPECIFIED: 0 PLC ± .008 [0.03], 1 PLC ± .008 [0.03], 2 PLC ± .008 [0.03], 3 PLC ± .008 [0.03], 4 PLC ± .008 [0.03]. MATERIAL: POLYESTER. FINISH: CONTACTS: SEE TABLE.

| | | | |
|---------------------------|---------------|--------|-----------|
| REVISED PER ECO-11-005033 | DATE: 23MAR11 | BY: RK | APVD: HMR |
|---------------------------|---------------|--------|-----------|

RECEPTACLE ASSY, POLARIZED, 2mm CL, AMP-LATCH

SCALE: 10:1 SHEET 1 OF 1 REV L2