

## 1-1337583-0 Product Details

[Share](#) [Print](#) [Email](#)



**1-1337583-0**

TE Internal Number: 1-1337583-0

Active

[View 3D PDF](#)

### MCX (OSX) RF Connectors

Converted to EU RoHS/ELV Compliant  
(Statement of Compliance)

#### Product Highlights:

- Connector - RF
- Jack
- Body Style = Right Angle
- Applies To Printed Circuit Board
- Without Panel Mount Retention

[View all Features](#)

### Quick Links

- ▶ [Pricing & Availability](#)
- ▶ [Search for Tooling](#)
- ▶ [Product Feature Selector](#)
- ▶ [Contact Us About This Product](#)

[Add to My Part List](#) [Request Sample](#) [Find Similar Products](#) [Buy Product](#)

### Documentation & Additional Information

#### Product Drawings:

- [MCX SURFACE MOUNT ELBOW PCB SOCKET 50 OHM](#) (PDF, English)

#### Catalog Pages/Data Sheets:

- None Available

#### Product Specifications:

- [MCX SERIES COAXIAL CONNECTORS - TYCO GREENPAR](#) (PDF, English)

#### Application Specifications:

- None Available

#### Instruction Sheets:

- None Available

#### CAD Files: [\(CAD Format & Compression Information\)](#)

- [2D Drawing](#) (DXF, Version D)
- [3D Model](#) (IGES, Version D)
- [3D Model](#) (STEP, Version D)

[List all Documents](#)

#### Related Products:

- [Tooling](#)

### Product Features (Please use the Product Drawing for all design activity)

#### Product Type Features:

- [Product Type](#) = Connector - RF
- Gender = Jack
- [PCB Mount Retention](#) = Without
- Dielectric Material = PTFE
- Grade = Professional
- Sealed = No
- Isolated = No

#### Mechanical Attachment:

- [Panel Mount Retention](#) = Without
- Flange Dimension [Sq.] (mm [In]) = 6.00 [0.236]

#### Electrical Characteristics:

- Connector Impedance ( $\Omega$ ) = 50

#### Termination Features:

- Contact Termination Type = Surface Mount

#### Dimensions:

- PCB Height (mm [in]) = 5.70 [0.224]

#### Body Features:

- [Body Style](#) = Right Angle
- Body Plating = Gold
- Body Material = Brass
- Body Shape = Square
- Polarized = No

#### Contact Features:

- Center Contact Plating = Gold
- Center Contact Material = Beryllium Copper

#### Industry Standards:

- [RoHS/ELV Compliance](#) = RoHS compliant, ELV compliant
- [Lead Free Solder Processes](#) = Wave solder capable to 240°C, Wave solder capable to 260°C, Wave solder capable to 265°C
- RoHS/ELV Compliance History = Converted to comply with RoHS directive

#### Environmental:

- Operating Temperature (Max.) (°C) = 165

#### Conditions for Usage:

- [Applies To](#) = Printed Circuit Board

#### Packaging Features:

- Packaging Method = Tape & Reel

#### Other:

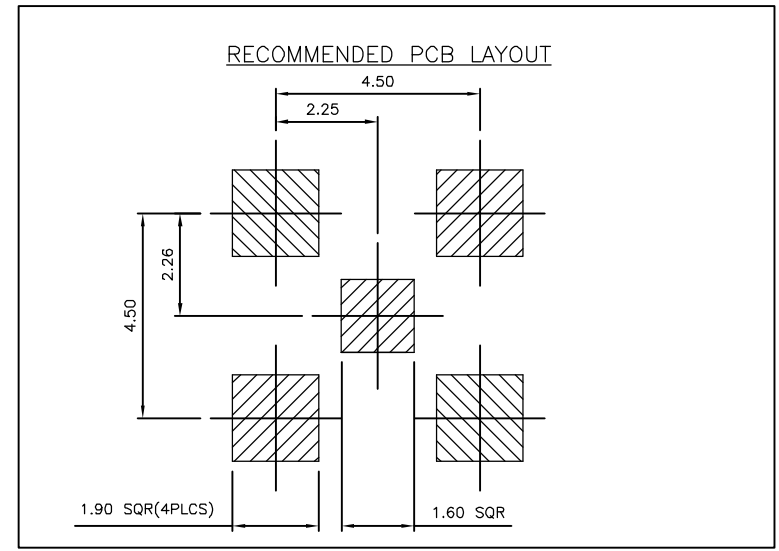
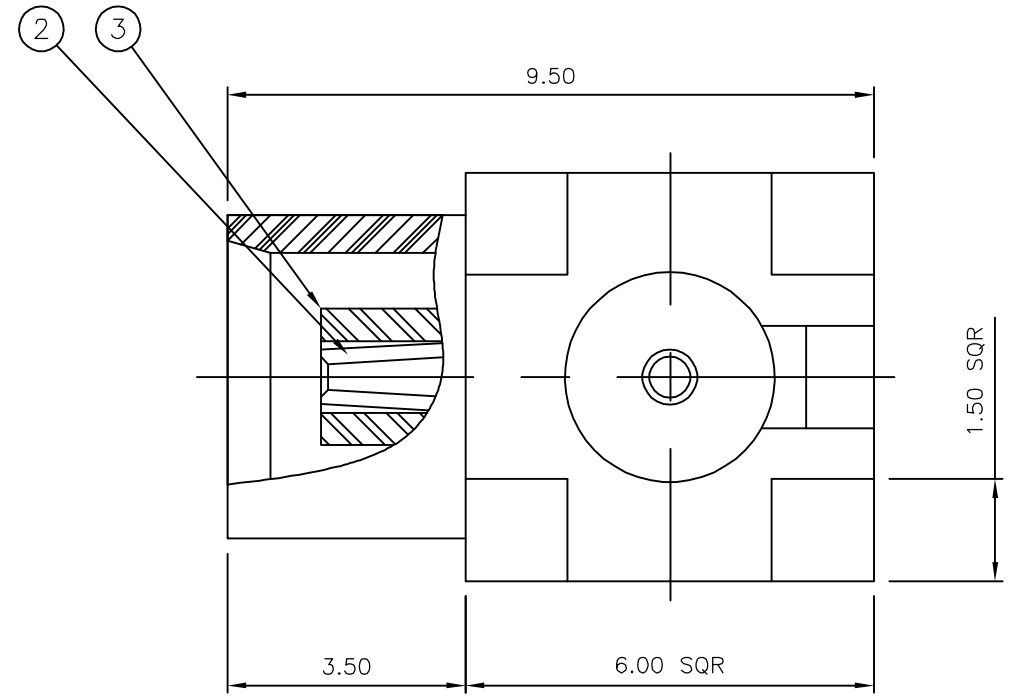
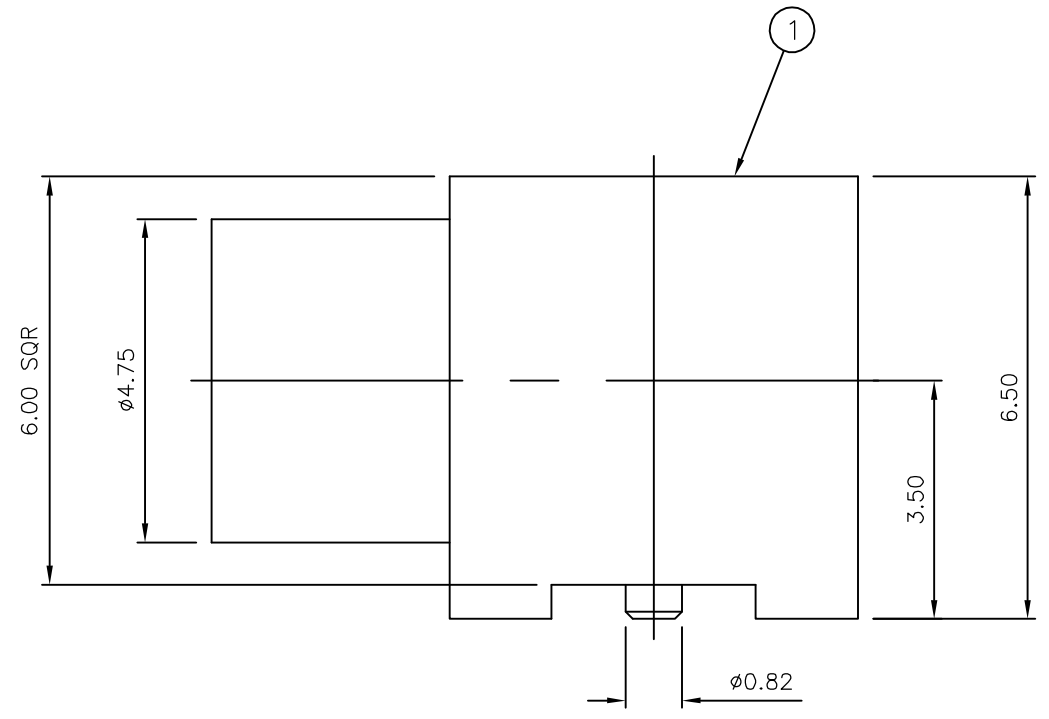
- Brand = Greenpar

THIS DRAWING IS UNPUBLISHED. RELEASED FOR PUBLICATION FEB ,2006.  
 © COPYRIGHT 2006 BY TYCO ELECTRONICS CORPORATION. ALL RIGHTS RESERVED.

LOC	DIST	REVISIONS					
E	B	P	LTR	DESCRIPTION	DATE	DWN	APVD
		D		ECR-06-024709	19OCT06	JMS	FWK

NOTES:

- 1 PACK IN ACCORDANCE WITH AMP SPEC 107-3275
- 2 TAPE AND REEL PACKAGING OPTION AS PER NOTES 11 AND 14
- 3 Au PLATING
- 4 ELECTRICAL CHARACTERISTICS  
 FREQUENCY RANGE: DC - 6 GHz  
 NOMINAL IMPEDANCE: 50 Ohm  
 INSULATION RESISTANCE: 1000 MOhm  
 WORKING VOLTAGE: 335 Volts RMS at Sea Level  
 DIELECTRIC WITHSTAND VOLTAGE: 1000 Volts RMS Max  
 CONTACT RESISTANCE:  
 CENTRE CONTACT: 5.00 mOhm Max  
 OUTER CONTACT: 1.00 mOhm Max  
 VSWR @ 4GHz: N/A  
 INSERTION LOSS dB @ x 1.0 GHz: 0.10 Max
- 5 MECHANICAL CHARACTERISTICS  
 COUPLING NUT RETENTION FORCE: N/A  
 DURABILITY: 500 Cycles Min
- 6 ENVIRONMENTAL CHARACTERISTICS  
 OPERATING TEMPERATURE: -65 to +165 DegC
- 7. FOR TECHNICAL DATA REFER TO YOUR LOCAL TYCO ELECTRONICS SALES OFFICE
- 8. ALL DIMENSIONS ARE NOMINAL FOR REFERENCE ONLY UNLESS OTHERWISE STATED



QTY	QTY PER ASSY	MATERIAL	DESCRIPTION	ITEM
1	1	PTFE	INSULATION	3
1	1	BERYLLIUM COPPER	CONTACT	2
1	1	BRASS	BODY	1
6--0	1--0			

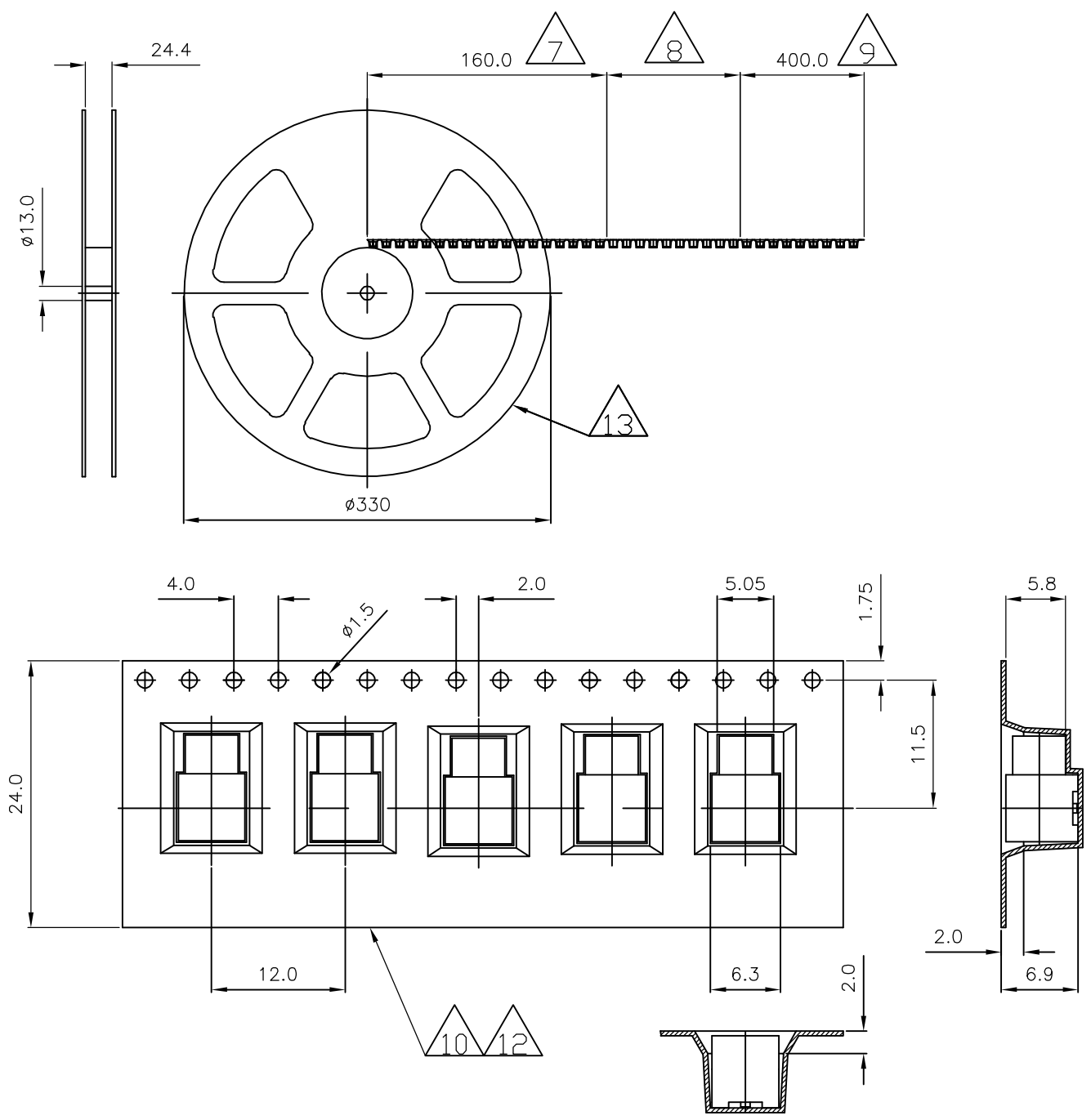
THIS DRAWING IS A CONTROLLED DOCUMENT.		DWN J.SANDWELL 02FEB06	Tyco Electronics Corporation Bideford EX39 4HE	
DIMENSIONS: mm		CHK S.PARLOW 02FEB06		
TOLERANCES UNLESS OTHERWISE SPECIFIED:		APVD F.WHEELER-KING 02FEB06	NAME MCX SURFACE MOUNT ELBOW PCB SOCKET 50 OHM	
0 PLC ± -		PRODUCT SPEC	-	
1 PLC ± -		APPLICATION SPEC	-	
2 PLC ± -		WEIGHT -	SIZE A3	CAGE CODE 00779
3 PLC ± -		MATERIAL SEE TABLE	DRAWING NO C-1337583	
4 PLC ± -			RESTRICTED TO -	
ANGLES ± -		CUSTOMER DRAWING		
FINISH -		SCALE NTS		SHEET 1 OF 2
		REV D		

THIS DRAWING IS UNPUBLISHED. RELEASED FOR PUBLICATION FEB ,2006.  
 © COPYRIGHT 2006 BY TYCO ELECTRONICS CORPORATION. ALL RIGHTS RESERVED.

LOC	DIST	REVISIONS					
E	B	P	LTR	DESCRIPTION	DATE	DWN	APVD
		-		SEE SHEET 1	-	-	-

NOTES (CONT):

- 7 LAST RUNNING ACCORDING TO IEC 60286-3
- 8 BLISTER BELT FILLED WITH PARTS
- 9 400mm EMPTY BLISTER BELT, SEALED WITH COVER TAPE
- 10 BLISTER BELT ACCORDING TO IEC 60286-3
- 11 UNIT PER REEL: 750 PIECES
- 12 VOLUME-CONDUCTIVE MATERIAL
- 13 MADE FROM POLYSTYRENE
- 14 SMD-STRIP-PACKAGING ACCORDING TO IEC 60286-2



THIS DRAWING IS A CONTROLLED DOCUMENT.		DWN J.SANDWELL	02FEB06	Tyco Electronics Corporation Bideford EX39 4HE			
DIMENSIONS: mm		CHK S.PARLOW	02FEB06				
TOLERANCES UNLESS OTHERWISE SPECIFIED:		APVD F.WHEELER-KING	02FEB06	NAME MCX SURFACE MOUNT ELBOW PCB SOCKET 50 OHM			
0 PLC ± - 1 PLC ± - 2 PLC ± - 3 PLC ± - 4 PLC ± - ANGLES ± -		PRODUCT SPEC		APPLICATION SPEC			
MATERIAL SEE TABLE		FINISH		SIZE A3	CAGE CODE 00779	DRAWING NO C-1337583	RESTRICTED TO
CUSTOMER DRAWING				SCALE NTS	SHEET 2 OF 2	REV D	