



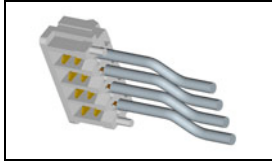
**Have a Question?**  
 Chat with a Product  
 Information Specialist

What can we help you find?

[Products](#) | 
 [Industries](#) | 
 [Resources](#) | 
 [About TE](#) | 
 [My Account](#) | 
 [Innovation](#) | 
 [Support Center](#)

**1-173977-0 Product Details**

[Share](#) | 
 [Print](#) | 
 [Email](#)



**1-173977-0**

TE Internal Number: 1-173977-0

Active

View 3D PDF

**2mm AMP CT Connectors**

Always EU RoHS/ELV Compliant (Statement of Compliance)

**Product Highlights:**

- Wire-to-Board, Wire-to-Wire
- Applies To Wire/Cable
- Connector
- Connector Assembly
- Connector Style = Receptacle

[View all Features](#)

**Quick Links**

- ▶ [Pricing & Availability](#)
- ▶ [Search for Tooling](#)
- ▶ [View Mating Products \(9\)](#)
- ▶ [Product Feature Selector](#)
- ▶ [Contact Us About This Product](#)

[Add to My Part List](#) | 
 [Request Sample](#) | 
 [Find Similar Products](#) | 
 [Buy Product](#)

Documentation & Additional Information	
<p><b>Product Drawings:</b></p> <ul style="list-style-type: none"> <li>• <a href="#">MT REC HOUSING ASS'Y ( AMP CT CONNECTOR 2mm PITCH )</a> (PDF, English)</li> <li>• <a href="#">CONN, STAND JIG</a> (PDF, Japanese)</li> </ul> <p><b>Catalog Pages/Data Sheets:</b></p> <ul style="list-style-type: none"> <li>• <a href="#">2.0MM_AMP_CT_CONNECTOR_SERIES_QUICK_REF_GUIDE</a> (PDF, English)</li> <li>• <a href="#">POWER_CONNECTORS_CATALOG_SEC02_CABLE_MOUNTED</a> (PDF, English)</li> </ul> <p><b>Product Specifications:</b></p> <ul style="list-style-type: none"> <li>• <a href="#">AMP Common Termination (CT), Conn, 2mm Pitch, M/T Type</a> (PDF, English)</li> </ul> <p><b>Application Specifications:</b></p> <ul style="list-style-type: none"> <li>• <a href="#">AMP Common Termination (CT) Connector Termination of...</a> (PDF, English)</li> </ul> <p><b>Instruction Sheets:</b></p> <ul style="list-style-type: none"> <li>• <a href="#">MINI PRESS CT CONNECTOR (WAS IS-553J)</a> (PDF, Japanese)</li> </ul> <p><b>CAD Files:</b> (<a href="#">CAD Format &amp; Compression Information</a>)</p> <ul style="list-style-type: none"> <li>• <a href="#">2D Drawing</a> (DXF, Version M)</li> <li>• <a href="#">3D Model</a> (IGES, Version M)</li> <li>• <a href="#">3D Model</a> (STEP, Version M)</li> </ul> <p style="text-align: right;"><a href="#">List all Documents</a></p>	<p><b>Additional Product Images:</b></p> <ul style="list-style-type: none"> <li>• <a href="#">Typical Application</a></li> </ul> <p><b>Related Products:</b></p> <ul style="list-style-type: none"> <li>• <a href="#">Tooling</a></li> <li>• <a href="#">Mating Products (9)</a></li> </ul>

Product Features (Please use the Product Drawing for all design activity)	
<p><b>Product Type Features:</b></p> <ul style="list-style-type: none"> <li>• <a href="#">Product Type</a> = Connector</li> <li>• Connector Type = Connector Assembly</li> <li>• Sealed = No</li> <li>• CSA File Number = LR 7189</li> </ul> <p><b>Electrical Characteristics:</b></p> <ul style="list-style-type: none"> <li>• Contact - Rated Current (A) = 2</li> <li>• Operating Voltage Reference = AC/DC, AC, DC</li> <li>• Operating Voltage (VAC) = 125</li> <li>• Operating Voltage (VDC) = 125</li> </ul> <p><b>Termination Features:</b></p> <ul style="list-style-type: none"> <li>• Wire/Cable Size (AWG) = 26 - 28</li> <li>• Termination Method to Wire/Cable = Insulation Displacement Crimp (IDC)</li> </ul> <p><b>Dimensions:</b></p> <ul style="list-style-type: none"> <li>• Length (X-Axis) (mm [in]) = 22.00 [0.8661]</li> <li>• Width (Z-Axis) (mm [in]) = 4.60 [0.181]</li> <li>• Profile Height (Y-Axis) (mm [in]) = 5.10 [0.200]</li> </ul> <p><b>Body Features:</b></p> <ul style="list-style-type: none"> <li>• Mating Retention = Without</li> </ul> <p><b>Contact Features:</b></p>	<p><b>Configuration Features:</b></p> <ul style="list-style-type: none"> <li>• <a href="#">Number of Positions</a> = 10</li> <li>• <a href="#">Number of Rows</a> = 1</li> </ul> <p><b>Industry Standards:</b></p> <ul style="list-style-type: none"> <li>• <a href="#">RoHS/ELV Compliance</a> = RoHS compliant, ELV compliant</li> <li>• <a href="#">Lead Free Solder Processes</a> = Not relevant for lead free process</li> <li>• <a href="#">RoHS/ELV Compliance History</a> = Always was RoHS compliant</li> <li>• <a href="#">UL Flammability Rating</a> = UL 94V-0</li> <li>• <a href="#">Agency/Standard</a> = CSA, UL</li> <li>• <a href="#">UL File Number</a> = E28476</li> </ul> <p><b>Environmental:</b></p> <ul style="list-style-type: none"> <li>• <a href="#">Operating Temperature</a> (°C [°F]) = -40 - +105 [-40 - +221]</li> </ul> <p><b>Conditions for Usage:</b></p> <ul style="list-style-type: none"> <li>• <a href="#">Applies To</a> = Wire/Cable</li> <li>• <a href="#">Accepts Wire Insulation Diameter, Range</a> (mm [in]) = 0.85 - 1.05 [0.0334 - 0.041]</li> </ul> <p><b>Operation/Application:</b></p> <ul style="list-style-type: none"> <li>• <a href="#">Application Use</a> = Wire-to-Board, Wire-to-Wire</li> <li>• <a href="#">Contact Transmits</a> (Typical Application) = Signal (Data)</li> </ul> <p><b>Packaging Features:</b></p>

<ul style="list-style-type: none"><li>• Contact Type = Socket</li><li>• Contact Plating, Mating Area, Material = Pre-Tin</li></ul> <p><b>Housing Features:</b></p> <ul style="list-style-type: none"><li>• Connector Style = Receptacle</li><li>• Centerline (mm [in]) = 2.00 [0.079]</li><li>• Housing Color = Natural</li></ul>	<ul style="list-style-type: none"><li>• Packaging Method = Bag, Box</li></ul> <p><b>Other:</b></p> <ul style="list-style-type: none"><li>• Brand = AMP</li></ul>
---	--

### Corporate Information

- [About TE](#)
- [Investors](#)
- [News Room](#)
- [Supplier Portal](#)
- [Careers](#)
- [Terms & Conditions](#)
- [Privacy Policy](#)
- [AODA Accessibility Policy](#)
- [AODA Multi-Year Accessibility Plan](#)

### Quick Links

- [Distributor Inventory](#)
- [Product Cross Reference](#)
- [Documents & Drawings](#)
- [Product Compliance Support Center](#)
- [Site Map](#)

### Customer Support

- [Email or Chat With Us](#)
- [Find a Phone Number](#)
- [Knowledge Base](#)
- [Manage Your Account](#)

### Keep Me Informed



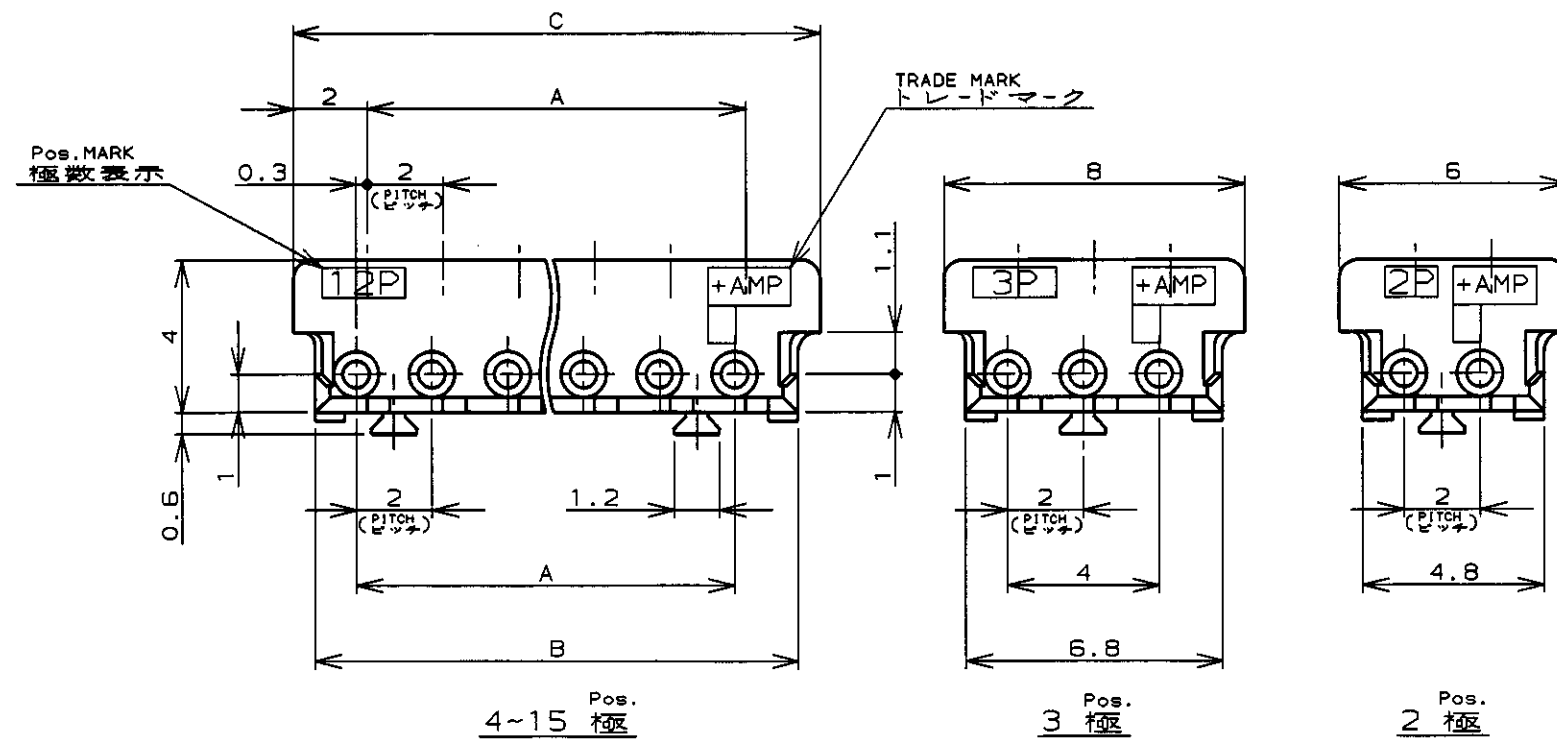
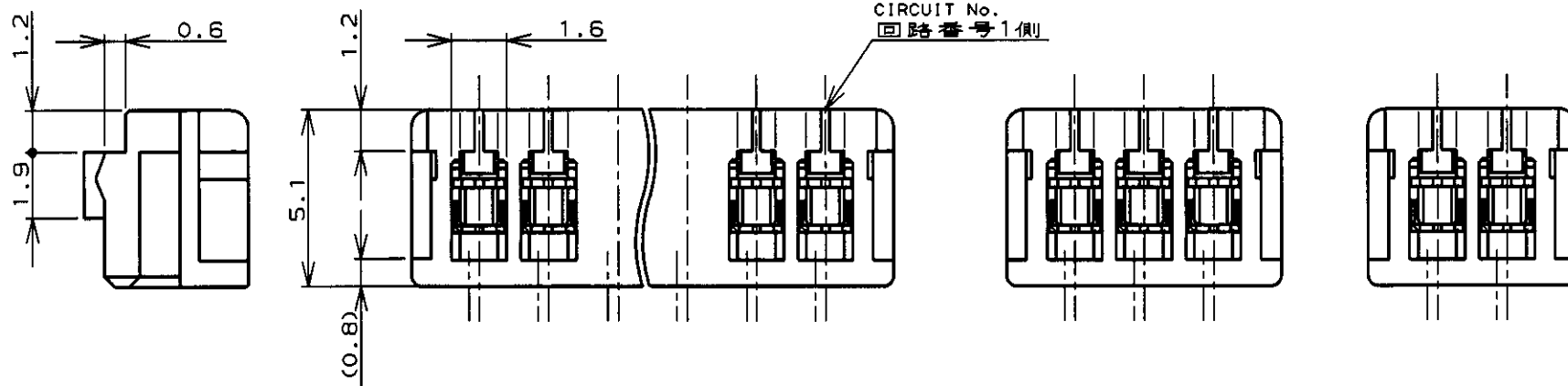
NUMBER C-173977

三角法 (3rd ANGLE PROJECTION)

METRIC

単位: ㎜ DIMENSIONS IN MM. DO NOT SCALE PRINT

PRINT DIST



注記;

- 適用電線範囲 : AWG# 28-26 (UL1571, UL1061)  
被覆外径 : 0.83-1.05
- 材料 : ハウジング-ガラス入PBT UL94V-0  
コンタクト-錫メッキ済磷青銅
- 運用製品規格番号 : 108-5218
- 取付運用規格番号 : 114-5104

NOTES;

- APPLICABLE WIRE SIZE : AWG# 28-26 (UL1571, UL1061)  
INSULATION DIA RANGE : 0.83-1.05
- MATERIAL :  
HOUSING : PBT (G.F) UL94V-0  
CONTACT : PRE-TIN PHOS-BRONZE
- PRODUCT SPEC : 108-5218
- APPLICATION SPEC : 114-5104

7-173977-5	5-173977-5	3-173977-5	1-173977-5	15	28	30.8	32
7- ↑ -4	5- ↑ -4	3- ↑ -4	1- ↑ -4	14	26	28.8	30
7- -3	5- -3	3- -3	1- -3	13	24	26.8	28
7- -2	5- -2	3- -2	1- -2	12	22	24.8	26
7- -1	5- -1	3- -1	1- -1	11	20	22.8	24
7- -0	5- -0	3- -0	1- -0	10	18	20.8	22
6- -9	4- -9	2- -9		9	16	18.8	20
6- -8	4- -8	2- -8		8	14	16.8	18
6- -7	4- -7	2- -7		7	12	14.8	16
6- -6	4- -6	2- -6		6	10	12.8	14
6- -5	4- -5	2- -5		5	8	10.8	12
6- -4	4- -4	2- -4		4	6	8.8	10
6- -3	4- -3	2- -3		3	-AS SHOWN 図示-		
6-173977-2	4-173977-2	2-173977-2	173977-2	2	-AS SHOWN 図示-		
BLACK 黒色	CREAM YELLOW クリームイエロー	LIGHT BLUE ライトブルー	NATURAL 自然色	POS	A	B	C
PART No. 製品型番				極数	A	B	C

適合電線断面積 (WIRE RANGE) NOTE 1 mm <sup>2</sup> (AWG - )	被覆外径 (INSULATION DIA.) NOTE 1 mmφ	名称 (NAME) MT REC HOUSING ASS'Y (AMP CT CONNECTOR 2mm PITCH)
材料 (MATERIAL) NOTE 2	仕上 (FINISH) //	一般公差 (GENERAL TOLERANCE) 10以下 : ±0.2 10を超え 30以下 : ±0.25 30を超え 100以下 : ±0.3 角 度 : ±3°
G2 REVISED PER ECO-11-005033	RK HMR 2APR11	DR. 23/AUG/99 DE. 23/AUG/99
LTR 変更 (REVISION RECORD)	DR CHK DATE	DR. J. TSUJI DE. J. Tsuji
SIZE A3 LOC J 尺度 (SCALE) 4-1 REV. G2		番号 (No.) C-173977 SHEET 1 OF 1

G2	REVISED PER ECO-11-005033	RK	HMR	2APR11
LTR	変更 (REVISION RECORD)	DR	CHK	DATE